

Data Path : Z:\pestpcbsrv\HPCHEM1\FID_E\Data\FE032323AL\
 Data File : FE040965.D
 Signal(s) : FID1B.ch
 Acq On : 23 Mar 2023 08:52
 Operator : YP\AJ
 Sample : 20 PPM ALIPHATIC HC STD
 Misc :
 ALS Vial : 2 Sample Multiplier: 1

Instrument :
 FID_E
 ClientSampleId :

Integration File: autoint1.e
 Quant Time: Mar 24 02:53:27 2023
 Quant Method : Z:\pestpcbsrv\HPCHEM1\FID_E\methods\Aliphatic EPH 022823.M
 Quant Title : GC Extractables
 QLast Update : Tue Feb 28 03:05:09 2023
 Response via : Initial Calibration
 Integrator: ChemStation

Volume Inj. : 1 ul
 Signal Phase : Rxi-1ms
 Signal Info : 20M x 0.18mm x 0.18um

Compound	R.T.	Response	Conc Units

System Monitoring Compounds			
9) S ortho-Terphenyl (SURR)	11.865	3620533	19.381 ug/ml
Spiked Amount	50.000	Recovery =	38.76%
12) S 1-chlorooctadecane (S...	13.304	2826177	19.095 ug/ml
Spiked Amount	50.000	Recovery =	38.19%
Target Compounds			
1) T n-Nonane (C9)	3.264	3179237	20.661 ug/ml
2) T n-Decane (C10)	4.511	3236801	21.515 ug/ml
3) T A~Naphthalene (C11.7)	6.213	3499980	21.101 ug/ml
4) T n-Dodecane (C12)	6.675	3262470	21.311 ug/ml
5) T A~2-methylnaphthalene...	7.309	3186725	21.056 ug/ml
6) T n-Tetradecane (C14)	8.501	3275535	21.193 ug/ml
7) T n-Hexadecane (C16)	10.108	3381325	20.934 ug/ml
8) T n-Octadecane (C18)	11.550	3461473	20.386 ug/ml
10) T n-Eicosane (C20)	12.858	3345742	19.778 ug/ml
11) T n-Heneicosane (C21)	13.471	3317114	19.358 ug/ml
13) T n-Docosane (C22)	14.057	3267841	19.075 ug/ml
14) T n-Tetracosane (C24)	15.161	3235542	18.769 ug/ml
15) T n-Hexacosane (C26)	16.183	3113505	18.319 ug/ml
16) T n-Octacosane (C28)	17.134	3142039	18.735 ug/ml
17) T n-Tricontane (C30)	18.022	3302463	20.225 ug/ml
18) T n-Dotriacontane (C32)	18.856	3423468	20.003 ug/ml
19) T n-Tetratriacontane (C34)	19.640	3249404	21.017 ug/ml
20) T n-Hexatriacontane (C36)	20.381	2943983	20.264 ug/ml
21) T n-Octatriacontane (C38)	21.109	2861656	20.818 ug/ml
22) T n-Tetracontane (C40)	21.997	2896655	18.746 ug/ml

(f)=RT Delta > 1/2 Window

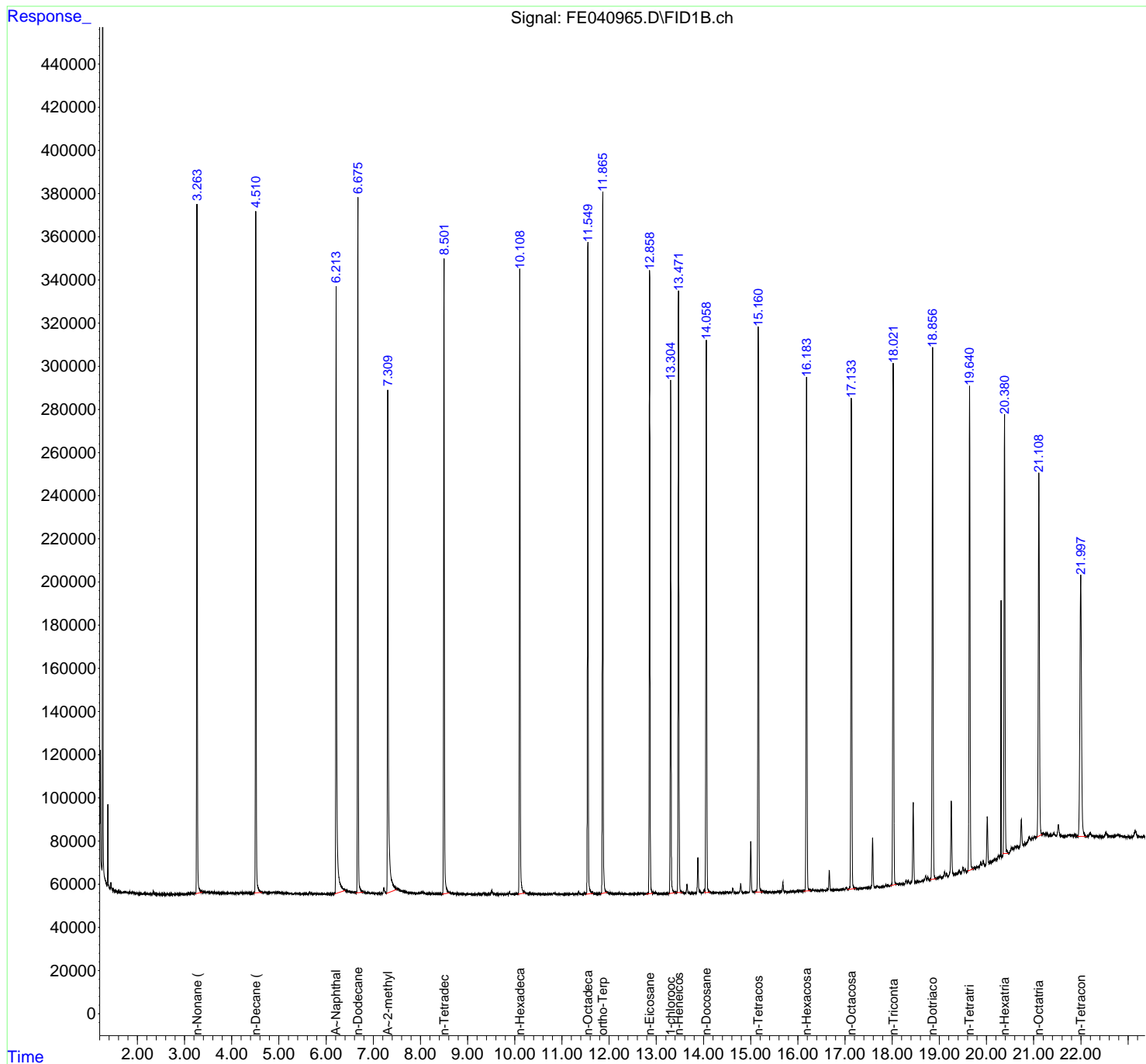
(m)=manual int.

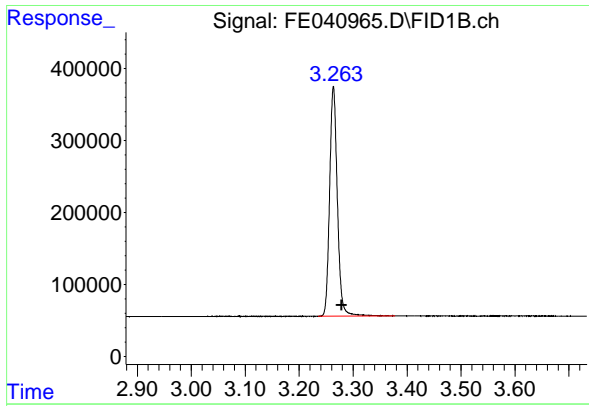
Data Path : Z:\pestpcbsrv\HPCHEM1\FID_E\Data\FE032323AL\
 Data File : FE040965.D
 Signal(s) : FID1B.ch
 Acq On : 23 Mar 2023 08:52
 Operator : YP\AJ
 Sample : 20 PPM ALIPHATIC HC STD
 Misc :
 ALS Vial : 2 Sample Multiplier: 1

Instrument :
 FID_E
 ClientSampleId :

Integration File: autoint1.e
 Quant Time: Mar 24 02:53:27 2023
 Quant Method : Z:\pestpcbsrv\HPCHEM1\FID_E\methods\Aliphatic EPH 022823.M
 Quant Title : GC Extractables
 QLast Update : Tue Feb 28 03:05:09 2023
 Response via : Initial Calibration
 Integrator: ChemStation

Volume Inj. : 1 ul
 Signal Phase : Rxi-1ms
 Signal Info : 20M x 0.18mm x 0.18um

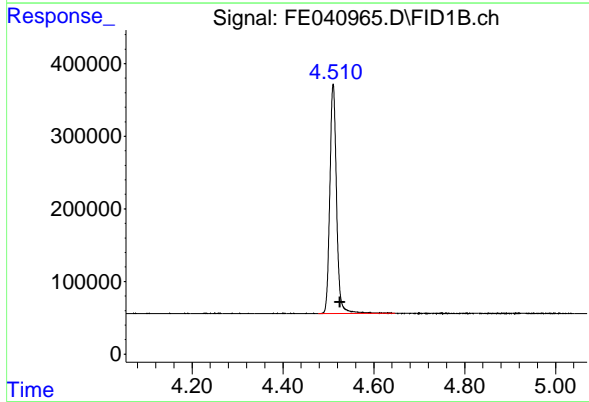




#1 n-Nonane (C9)

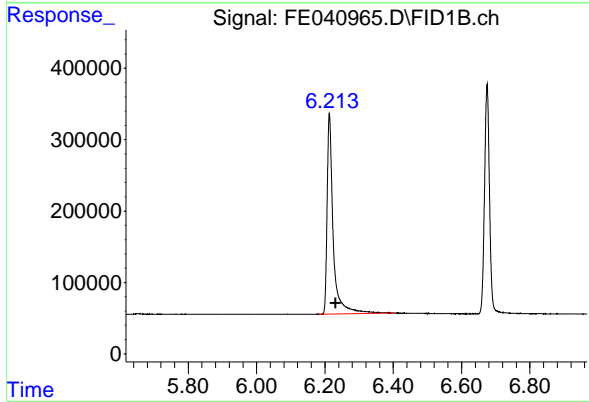
R.T.: 3.264 min
Delta R.T.: -0.015 min
Response: 3179237
Conc: 20.66 ug/ml

Instrument :
FID_E
ClientSampleId :



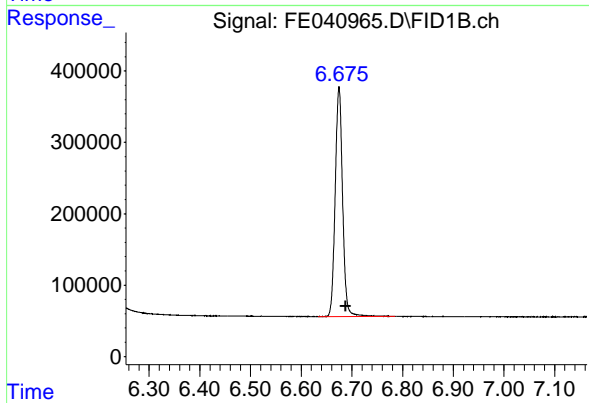
#2 n-Decane (C10)

R.T.: 4.511 min
Delta R.T.: -0.014 min
Response: 3236801
Conc: 21.51 ug/ml



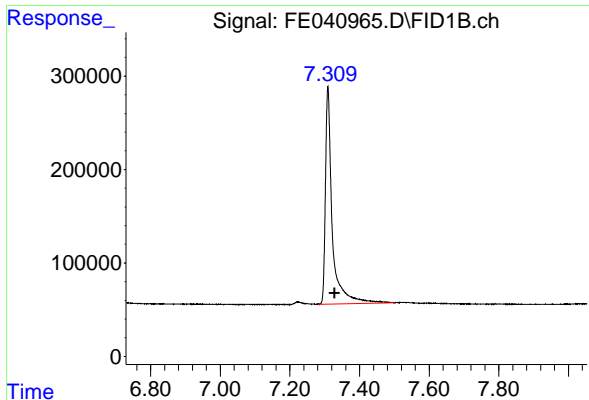
#3 A~Naphthalene (C11.7)

R.T.: 6.213 min
Delta R.T.: -0.018 min
Response: 3499980
Conc: 21.10 ug/ml



#4 n-Dodecane (C12)

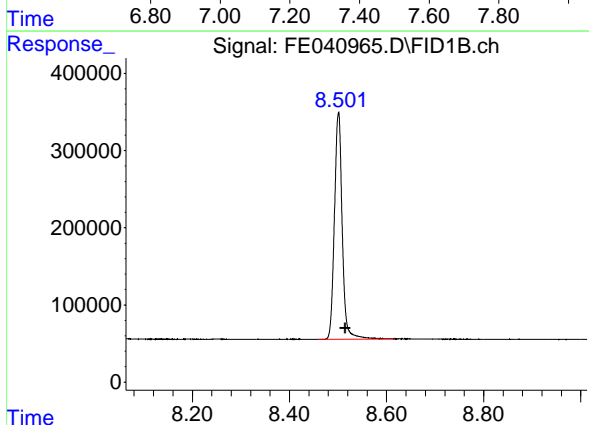
R.T.: 6.675 min
Delta R.T.: -0.013 min
Response: 3262470
Conc: 21.31 ug/ml



#5 A~2-methylnaphthalene (C12.89)

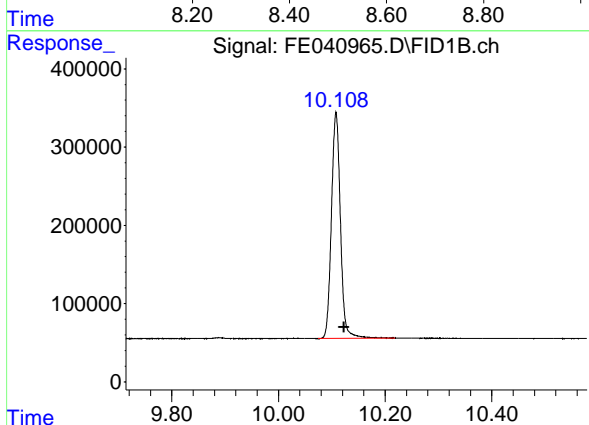
R.T.: 7.309 min
 Delta R.T.: -0.019 min
 Response: 3186725
 Conc: 21.06 ug/ml

Instrument :
 FID_E
 ClientSampleId :



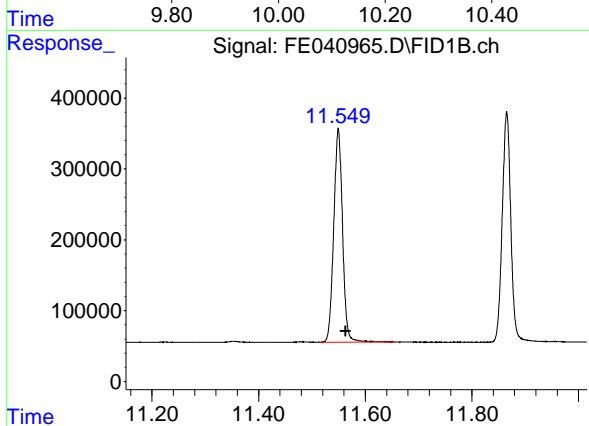
#6 n-Tetradecane (C14)

R.T.: 8.501 min
 Delta R.T.: -0.014 min
 Response: 3275535
 Conc: 21.19 ug/ml



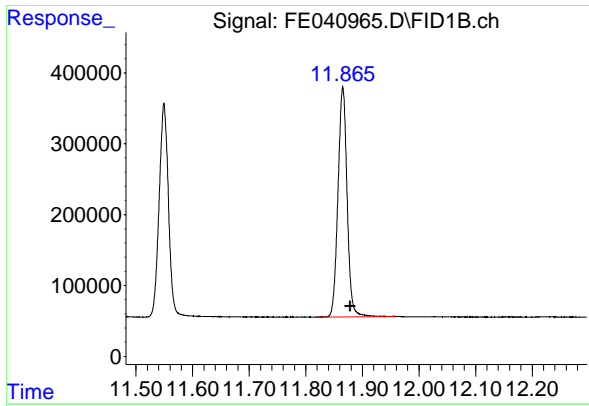
#7 n-Hexadecane (C16)

R.T.: 10.108 min
 Delta R.T.: -0.015 min
 Response: 3381325
 Conc: 20.93 ug/ml



#8 n-Octadecane (C18)

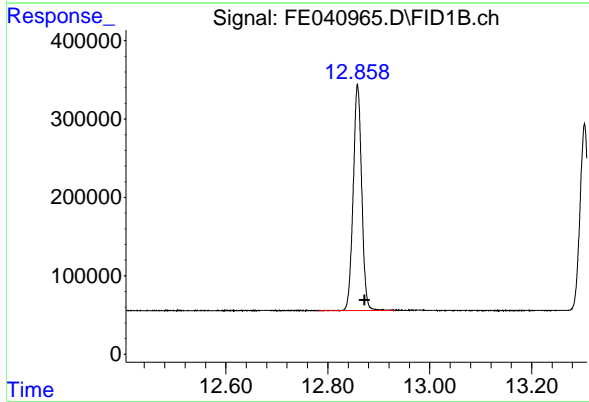
R.T.: 11.550 min
 Delta R.T.: -0.014 min
 Response: 3461473
 Conc: 20.39 ug/ml



#9 ortho-Terphenyl (SURR)

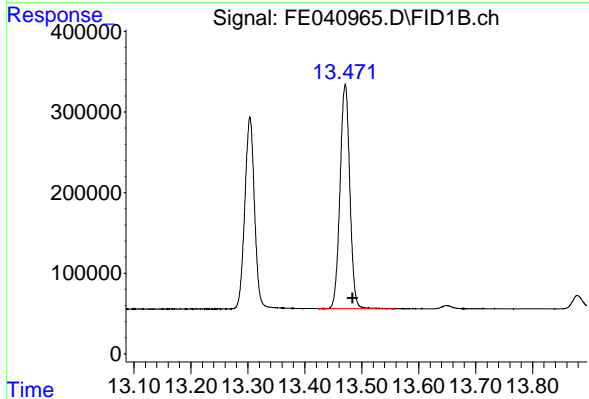
R.T.: 11.865 min
 Delta R.T.: -0.013 min
 Response: 3620533
 Conc: 19.38 ug/ml

Instrument :
 FID_E
 ClientSampleId :



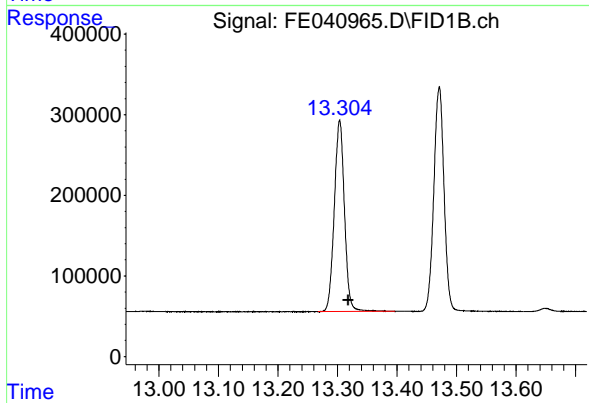
#10 n-Eicosane (C20)

R.T.: 12.858 min
 Delta R.T.: -0.014 min
 Response: 3345742
 Conc: 19.78 ug/ml



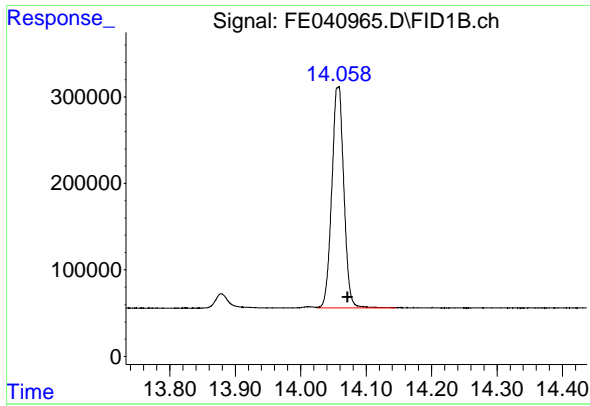
#11 n-Heneicosane (C21)

R.T.: 13.471 min
 Delta R.T.: -0.013 min
 Response: 3317114
 Conc: 19.36 ug/ml



#12 1-chlorooctadecane (SURR)

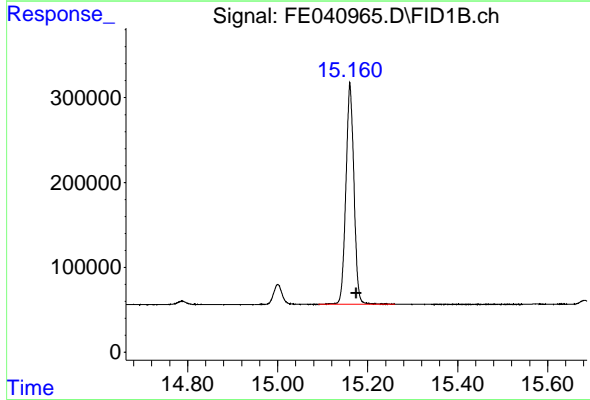
R.T.: 13.304 min
 Delta R.T.: -0.014 min
 Response: 2826177
 Conc: 19.10 ug/ml



#13 n-Docosane (C22)

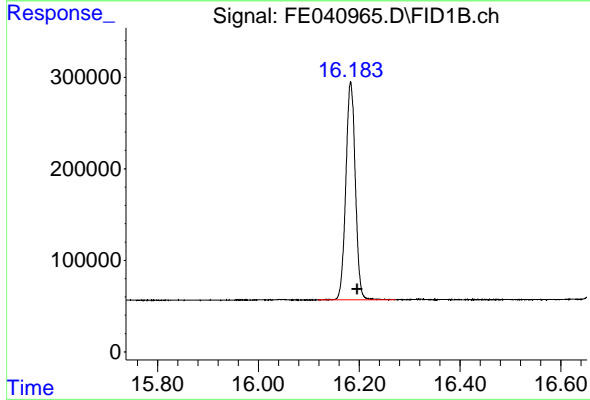
R.T.: 14.057 min
Delta R.T.: -0.014 min
Response: 3267841
Conc: 19.08 ug/ml

Instrument :
FID_E
ClientSampleId :



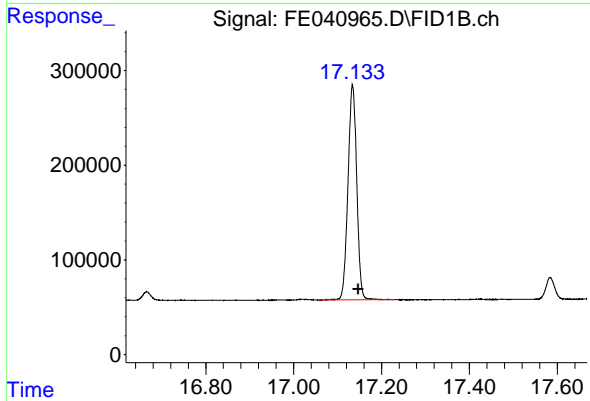
#14 n-Tetracosane (C24)

R.T.: 15.161 min
Delta R.T.: -0.014 min
Response: 3235542
Conc: 18.77 ug/ml



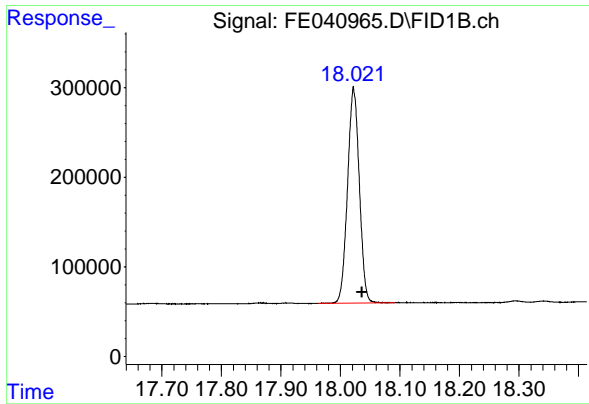
#15 n-Hexacosane (C26)

R.T.: 16.183 min
Delta R.T.: -0.014 min
Response: 3113505
Conc: 18.32 ug/ml



#16 n-Octacosane (C28)

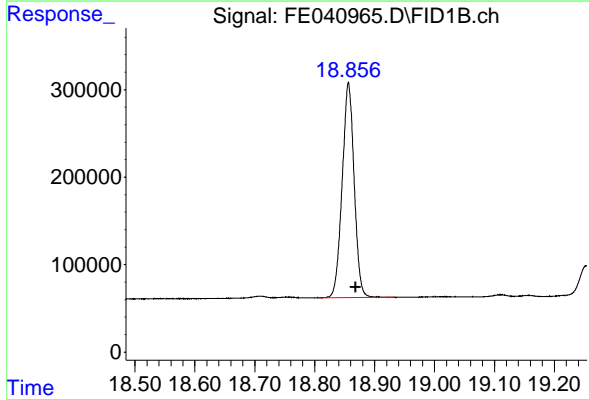
R.T.: 17.134 min
Delta R.T.: -0.013 min
Response: 3142039
Conc: 18.74 ug/ml



#17 n-Tricontane (C30)

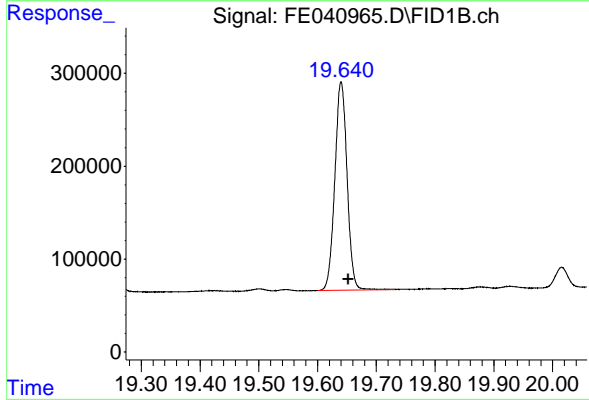
R.T.: 18.022 min
Delta R.T.: -0.014 min
Response: 3302463
Conc: 20.23 ug/ml

Instrument :
FID_E
ClientSampleId :



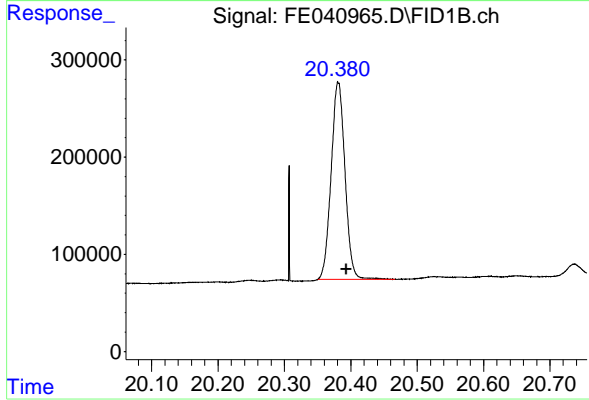
#18 n-Dotriacontane (C32)

R.T.: 18.856 min
Delta R.T.: -0.012 min
Response: 3423468
Conc: 20.00 ug/ml



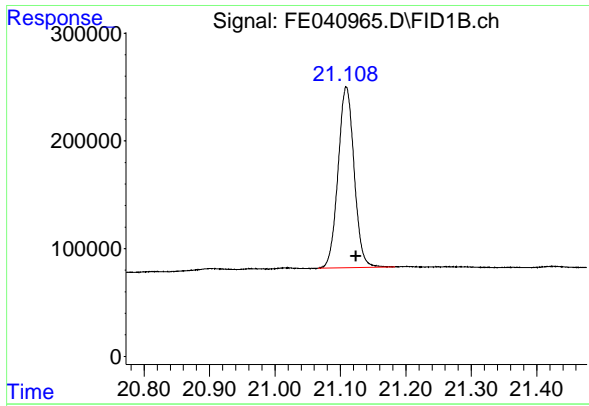
#19 n-Tetracontane (C34)

R.T.: 19.640 min
Delta R.T.: -0.012 min
Response: 3249404
Conc: 21.02 ug/ml



#20 n-Hexatriacontane (C36)

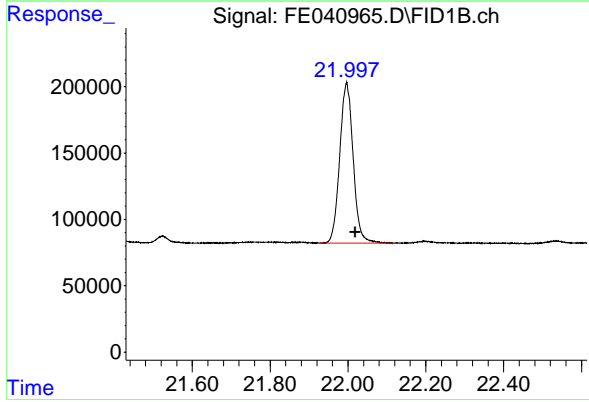
R.T.: 20.381 min
Delta R.T.: -0.012 min
Response: 2943983
Conc: 20.26 ug/ml



#21 n-Octatriacontane (C38)

R.T.: 21.109 min
Delta R.T.: -0.015 min
Response: 2861656
Conc: 20.82 ug/ml

Instrument :
FID_E
ClientSampleId :



#22 n-Tetracontane (C40)

R.T.: 21.997 min
Delta R.T.: -0.022 min
Response: 2896655
Conc: 18.75 ug/ml