

Data Path : Z:\pestpcbsrv\HPCHEM1\FID_E\Data\FE032422AL\
 Data File : FE035525.D
 Signal(s) : FID1B.CH
 Acq On : 24 Mar 2022 23:58
 Operator : YP\AJ
 Sample : N2063-03
 Misc :
 ALS Vial : 17 Sample Multiplier: 1

Instrument :
 FID_E
 ClientSampleId :

Integration File: autoint1.e
 Quant Time: Mar 25 02:14:38 2022
 Quant Method : Z:\pestpcbsrv\HPCHEM1\FID_E\methods\Aliphatic EPH 032322.M
 Quant Title : GC Extractables
 QLast Update : Wed Mar 23 13:27:46 2022
 Response via : Initial Calibration
 Integrator: ChemStation 6890 Scale Mode: Large solvent peaks clipped

Volume Inj. : 1 ul
 Signal Phase : Rxi-1ms
 Signal Info : 20M x 0.18mm x 0.18um

Compound	R.T.	Response	Conc Units

System Monitoring Compounds			
12) S 1-chlorooctadecane (S...	12.791	4604047	48.959 ug/ml
Spiked Amount 50.000		Recovery =	97.92%
Target Compounds			
4) T n-Dodecane (C12)	6.232	38924	<MDL ug/ml

(f)=RT Delta > 1/2 Window

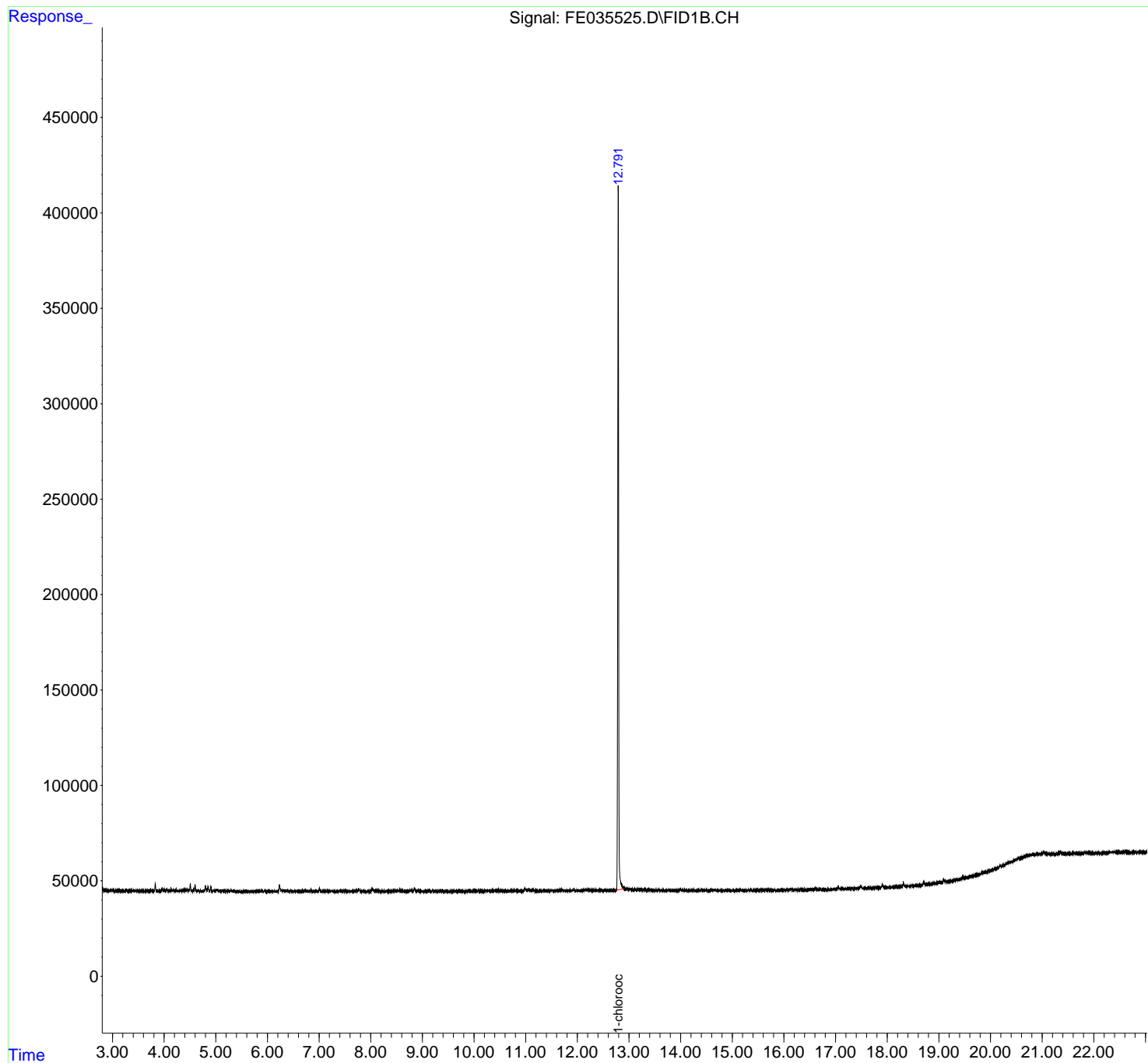
(m)=manual int.

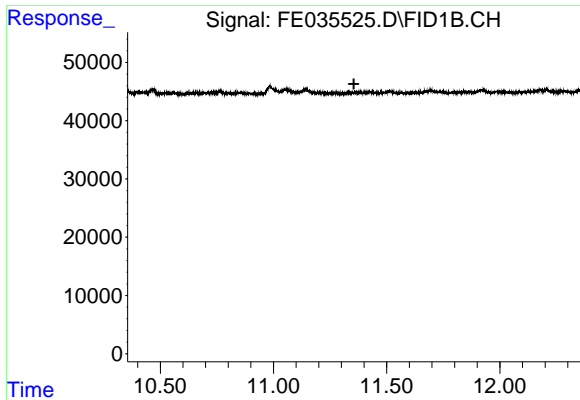
Data Path : Z:\pestpcbsrv\HPCHEM1\FID_E\Data\FE032422AL\
Data File : FE035525.D
Signal(s) : FID1B.CH
Acq On : 24 Mar 2022 23:58
Operator : YP\AJ
Sample : N2063-03
Misc :
ALS Vial : 17 Sample Multiplier: 1

Instrument :
FID_E
ClientSampleId :

Integration File: autoint1.e
Quant Time: Mar 25 02:14:38 2022
Quant Method : Z:\pestpcbsrv\HPCHEM1\FID_E\methods\Aliphatic EPH 032322.M
Quant Title : GC Extractables
QLast Update : Wed Mar 23 13:27:46 2022
Response via : Initial Calibration
Integrator: ChemStation 6890 Scale Mode: Large solvent peaks clipped

Volume Inj. : 1 ul
Signal Phase : Rxi-1ms
Signal Info : 20M x 0.18mm x 0.18um

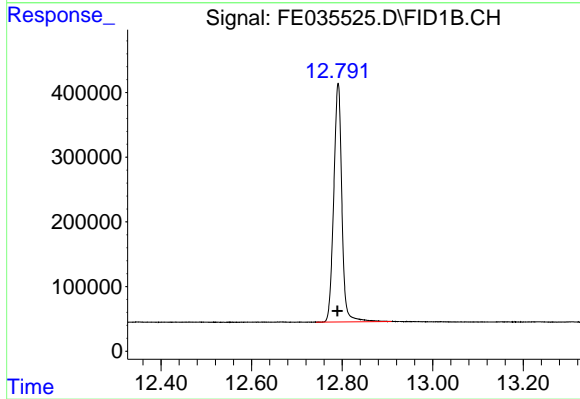




#9 ortho-Terphenyl (SURR)

R.T.: 0.000 min
 Exp R.T.: 11.355 min
 Response: 0
 Conc: N.D.

Instrument :
 FID_E
 ClientSampleId :



#12 1-chlorooctadecane (SURR)

R.T.: 12.791 min
 Delta R.T.: 0.001 min
 Response: 4604047
 Conc: 48.96 ug/ml