

Data Path : Z:\pestpcbsrv\HPCHEM1\FID_E\Data\FE032620\
 Data File : FE031591.D
 Signal(s) : FID1B.CH
 Acq On : 26 Mar 2020 18:50
 Operator : DD\AJ
 Sample : L2029-03
 Misc :
 ALS Vial : 11 Sample Multiplier: 1

Instrument :
 FID_E
 ClientSampleId :
 SB-1C-(0-2)

Integration File: autoint1.e
 Quant Time: Mar 27 02:17:19 2020
 Quant Method : Z:\pestpcbsrv\HPCHEM1\FID_E\methods\FE031020.M
 Quant Title :
 QLast Update : Fri Mar 20 08:17:28 2020
 Response via : Initial Calibration
 Integrator: ChemStation 6890 Scale Mode: Large solvent peaks clipped

Volume Inj. : 1uL
 Signal Phase : Rxi-1ms
 Signal Info : 20mx0.18mmx0.18um

Compound	R.T.	Response	Conc Units

System Monitoring Compounds			
9) S TETRACOSANE-d50 (SURR...	14.393	4114963	11.149 ug/ml
Target Compounds			

(f)=RT Delta > 1/2 Window

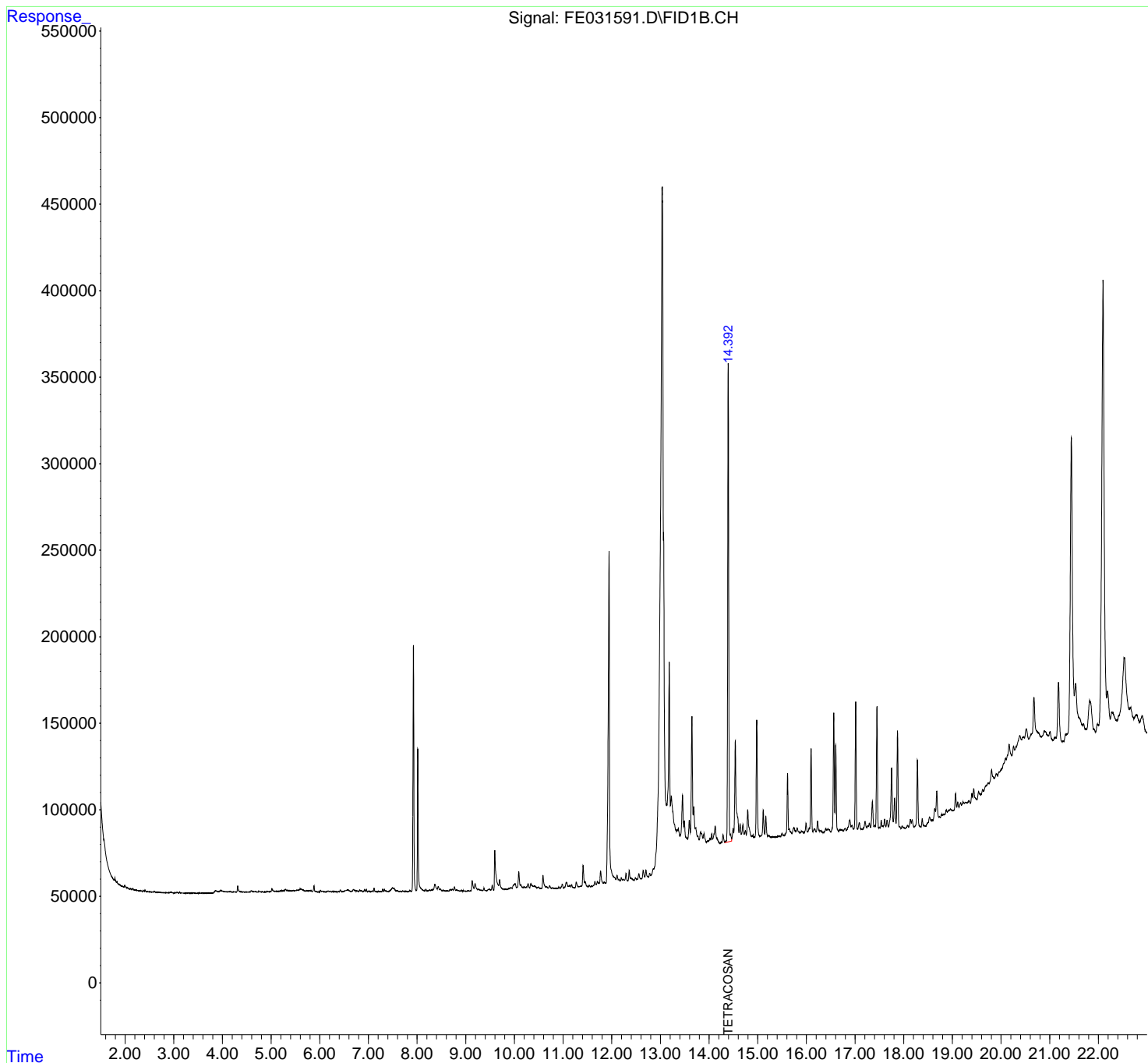
(m)=manual int.

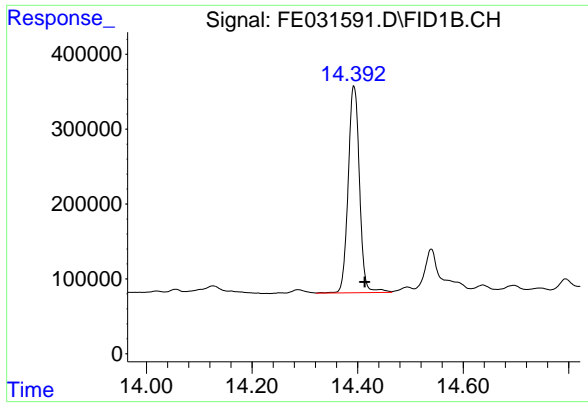
Data Path : Z:\pestpcbsrv\HPCHEM1\FID_E\Data\FE032620\
 Data File : FE031591.D
 Signal(s) : FID1B.CH
 Acq On : 26 Mar 2020 18:50
 Operator : DD\AJ
 Sample : L2029-03
 Misc :
 ALS Vial : 11 Sample Multiplier: 1

Instrument :
 FID_E
 ClientSampleId :
 SB-1C-(0-2)

Integration File: autoint1.e
 Quant Time: Mar 27 02:17:19 2020
 Quant Method : Z:\pestpcbsrv\HPCHEM1\FID_E\methods\FE031020.M
 Quant Title :
 QLast Update : Fri Mar 20 08:17:28 2020
 Response via : Initial Calibration
 Integrator: ChemStation 6890 Scale Mode: Large solvent peaks clipped

Volume Inj. : 1uL
 Signal Phase : Rxi-1ms
 Signal Info : 20mx0.18mmx0.18um





#9 TETRACOSANE-d50 (SURROGATE)

R.T.: 14.393 min
Delta R.T.: -0.020 min
Response: 4114963
Conc: 11.15 ug/ml

Instrument :
FID_E
ClientSampleId :
SB-1C-(0-2)