

Data Path : Z:\pestpcbsrv\HPCHEM1\FID_E\Data\FE032625AL\
 Data File : FE052977.D
 Signal(s) : FID1B.ch
 Acq On : 26 Mar 2025 13:04
 Operator : YP\AJ
 Sample : 20 PPM ALIPHATIC HC STD
 Misc :
 ALS Vial : 3 Sample Multiplier: 1

Instrument :
 FID_E
 ClientSampleId :

Integration File: autoint1.e
 Quant Time: Mar 27 04:16:38 2025
 Quant Method : Z:\pestpcbsrv\HPCHEM1\FID_E\methods\Aliphatic EPH 030325.M
 Quant Title : GC Extractables
 QLast Update : Mon Mar 03 13:39:39 2025
 Response via : Initial Calibration
 Integrator: ChemStation

Volume Inj. : 1 ul
 Signal Phase : Rxi-1ms
 Signal Info : 20M x 0.18mm x 0.18um

Compound	R.T.	Response	Conc Units

System Monitoring Compounds			
9) S ortho-Terphenyl (SURR)	11.905	3164395	18.770 ug/ml
Spiked Amount	50.000	Recovery =	37.54%
12) S 1-chlorooctadecane (S...	13.349	2354690	19.392 ug/ml
Spiked Amount	50.000	Recovery =	38.78%
Target Compounds			
1) T n-Nonane (C9)	3.246	3068894	19.793 ug/ml
2) T n-Decane (C10)	4.508	3118812	19.853 ug/ml
3) T A~Naphthalene (C11.7)	6.222	3320824	19.581 ug/ml
4) T n-Dodecane (C12)	6.688	3089092	19.840 ug/ml
5) T A~2-methylnaphthalene...	7.324	3160008	19.499 ug/ml
6) T n-Tetradecane (C14)	8.525	2999660	19.825 ug/ml
7) T n-Hexadecane (C16)	10.139	3042841	19.902 ug/ml
8) T n-Octadecane (C18)	11.588	3001918	19.731 ug/ml
10) T n-Eicosane (C20)	12.903	2821219	19.433 ug/ml
11) T n-Heneicosane (C21)	13.517	2750245	19.323 ug/ml
13) T n-Docosane (C22)	14.106	2730457	19.187 ug/ml
14) T n-Tetracosane (C24)	15.212	2704627	18.899 ug/ml
15) T n-Hexacosane (C26)	16.236	2671535	18.788 ug/ml
16) T n-Octacosane (C28)	17.188	2648118	18.623 ug/ml
17) T n-Tricontane (C30)	18.078	2735005	18.517 ug/ml
18) T n-Dotriacontane (C32)	18.913	2712812	18.686 ug/ml
19) T n-Tetratriacontane (C34)	19.698	2481605	18.412 ug/ml
20) T n-Hexatriacontane (C36)	20.440	2261300	19.031 ug/ml
21) T n-Octatriacontane (C38)	21.181	2232630	20.125 ug/ml
22) T n-Tetracontane (C40)	22.101	2270782	21.003 ug/ml

(f)=RT Delta > 1/2 Window

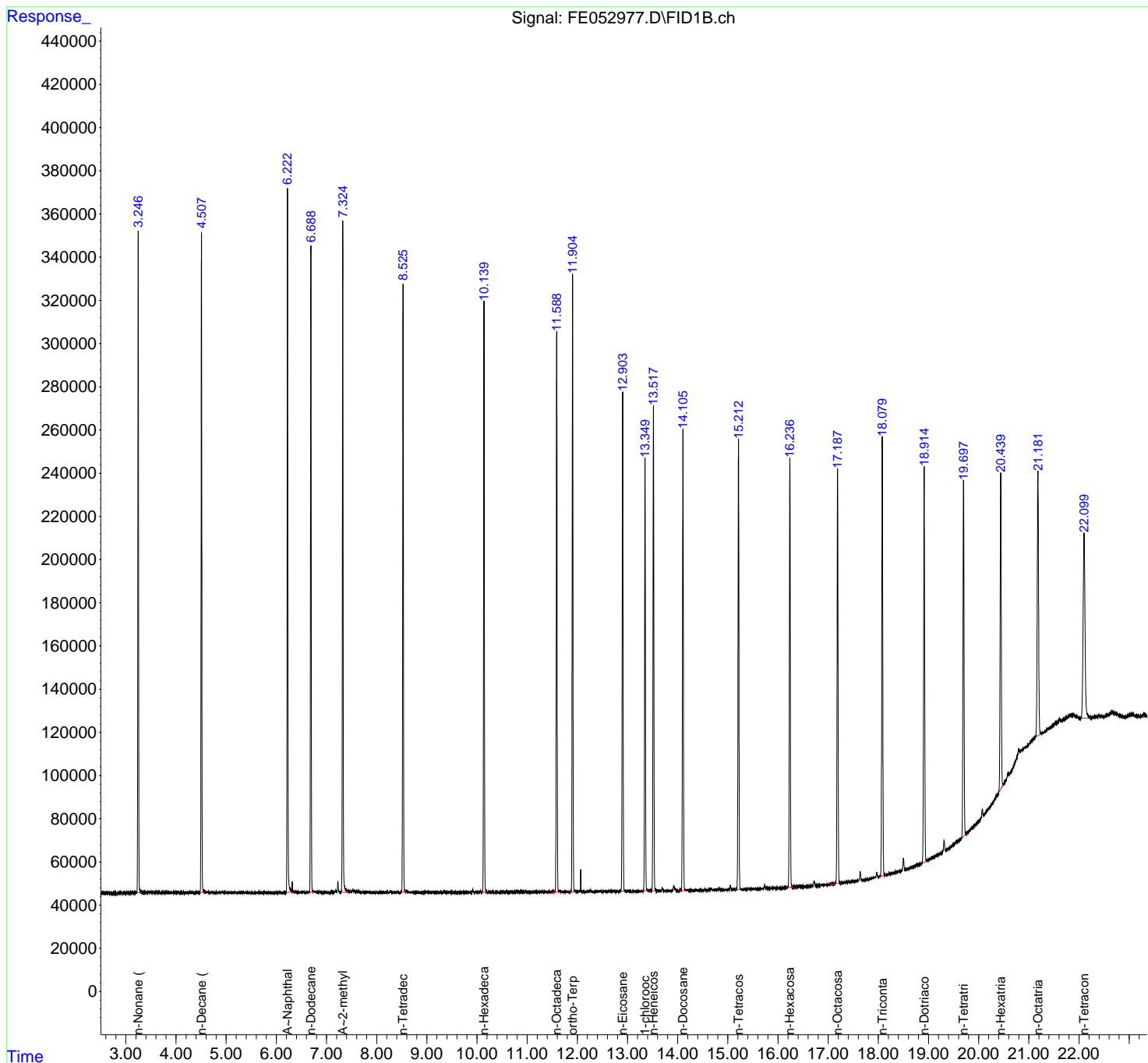
(m)=manual int.

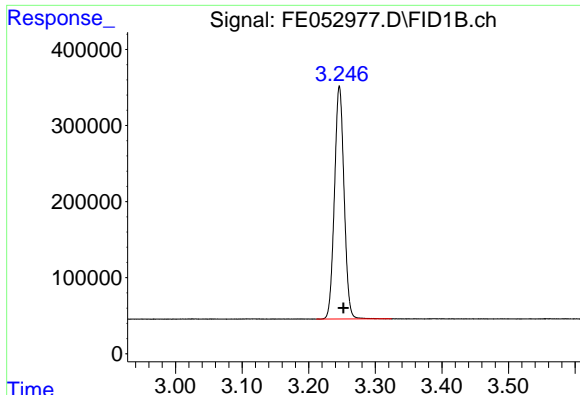
Data Path : Z:\pestpcbsrv\HPCHEM1\FID_E\Data\FE032625AL\
 Data File : FE052977.D
 Signal(s) : FID1B.ch
 Acq On : 26 Mar 2025 13:04
 Operator : YP\AJ
 Sample : 20 PPM ALIPHATIC HC STD
 Misc :
 ALS Vial : 3 Sample Multiplier: 1

Instrument :
 FID_E
 ClientSampleId :

Integration File: autoint1.e
 Quant Time: Mar 27 04:16:38 2025
 Quant Method : Z:\pestpcbsrv\HPCHEM1\FID_E\methods\Aliphatic EPH 030325.M
 Quant Title : GC Extractables
 QLast Update : Mon Mar 03 13:39:39 2025
 Response via : Initial Calibration
 Integrator: ChemStation

Volume Inj. : 1 ul
 Signal Phase : Rxi-1ms
 Signal Info : 20M x 0.18mm x 0.18um

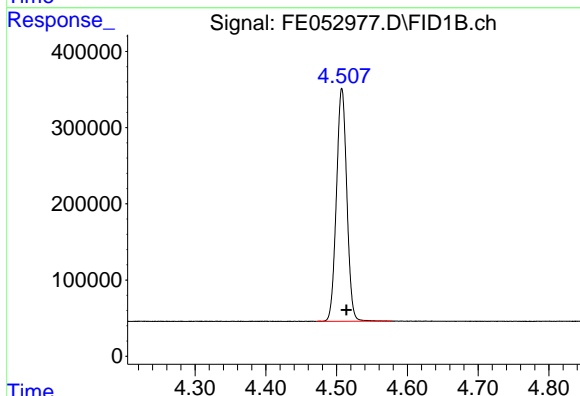




#1 n-Nonane (C9)

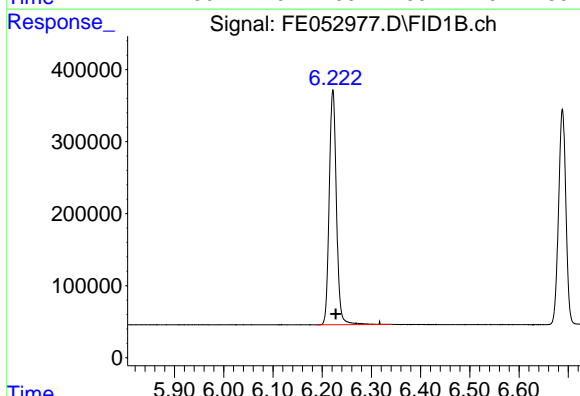
R.T.: 3.246 min
 Delta R.T.: -0.006 min
 Response: 3068894
 Conc: 19.79 ug/ml

Instrument :
 FID_E
 ClientSampleId :



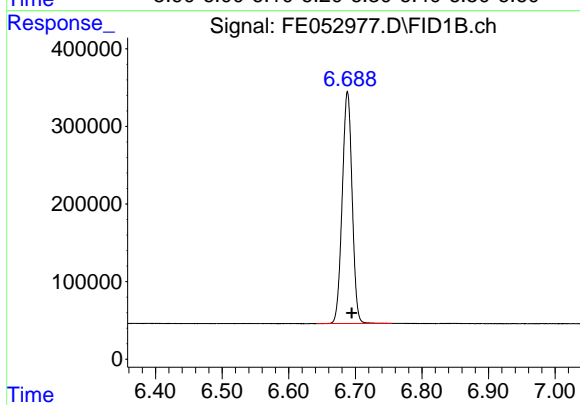
#2 n-Decane (C10)

R.T.: 4.508 min
 Delta R.T.: -0.006 min
 Response: 3118812
 Conc: 19.85 ug/ml



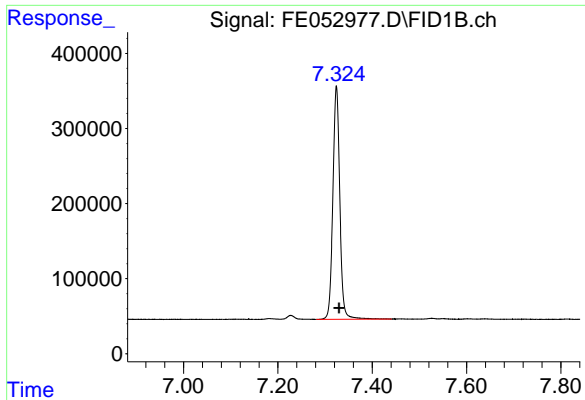
#3 A~Naphthalene (C11.7)

R.T.: 6.222 min
 Delta R.T.: -0.006 min
 Response: 3320824
 Conc: 19.58 ug/ml



#4 n-Dodecane (C12)

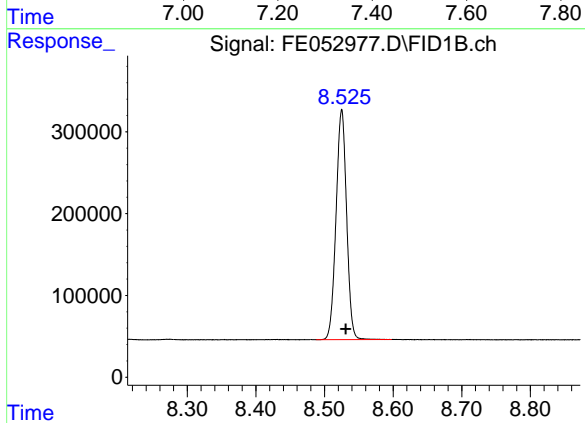
R.T.: 6.688 min
 Delta R.T.: -0.006 min
 Response: 3089092
 Conc: 19.84 ug/ml



#5 A~2-methylnaphthalene (C12.89)

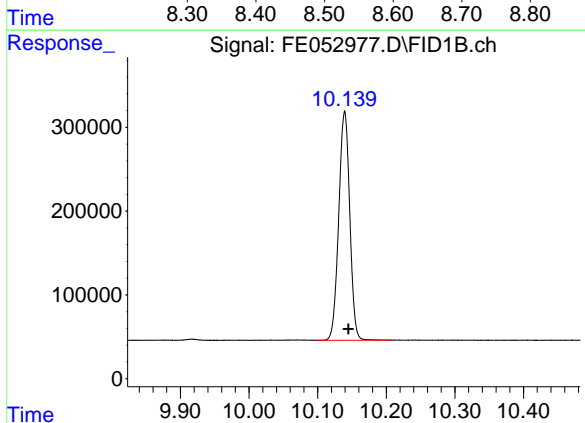
R.T.: 7.324 min
 Delta R.T.: -0.005 min
 Response: 3160008
 Conc: 19.50 ug/ml

Instrument :
 FID_E
 ClientSampleId :



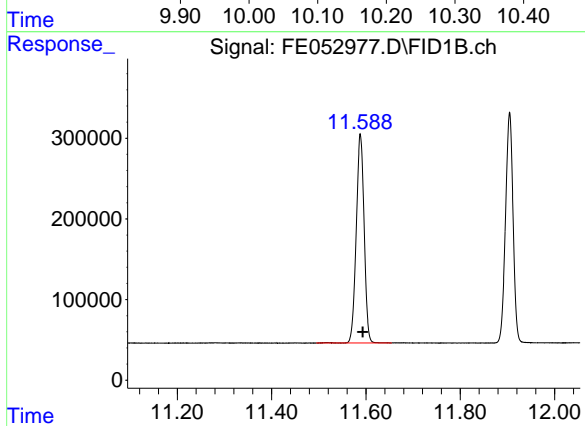
#6 n-Tetradecane (C14)

R.T.: 8.525 min
 Delta R.T.: -0.006 min
 Response: 2999660
 Conc: 19.82 ug/ml



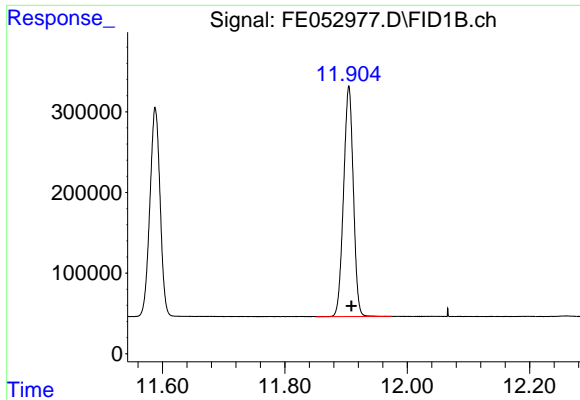
#7 n-Hexadecane (C16)

R.T.: 10.139 min
 Delta R.T.: -0.005 min
 Response: 3042841
 Conc: 19.90 ug/ml



#8 n-Octadecane (C18)

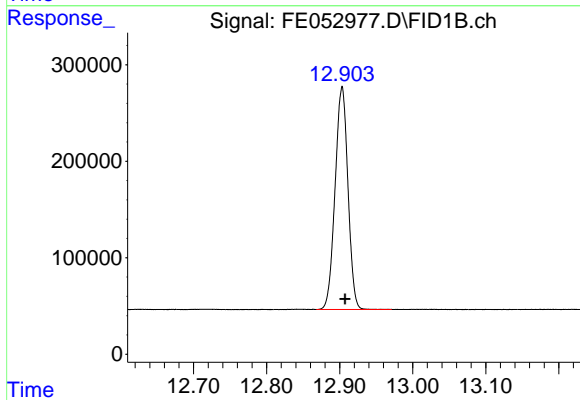
R.T.: 11.588 min
 Delta R.T.: -0.005 min
 Response: 3001918
 Conc: 19.73 ug/ml



#9 ortho-Terphenyl (SURR)

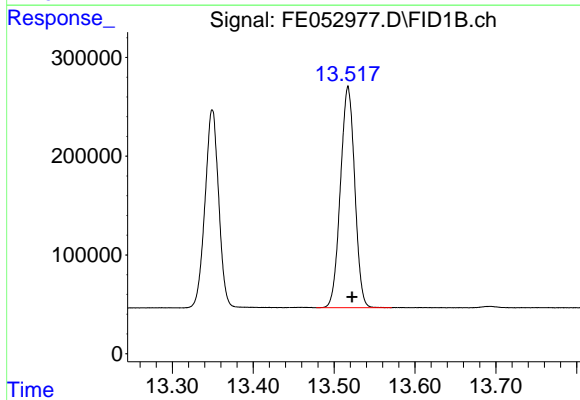
R.T.: 11.905 min
 Delta R.T.: -0.004 min
 Response: 3164395
 Conc: 18.77 ug/ml

Instrument :
 FID_E
 ClientSampleId :



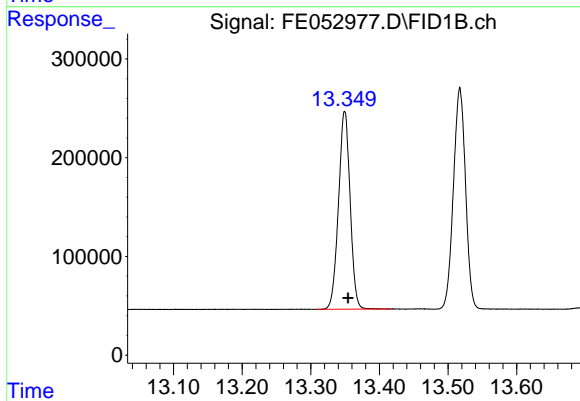
#10 n-Eicosane (C20)

R.T.: 12.903 min
 Delta R.T.: -0.004 min
 Response: 2821219
 Conc: 19.43 ug/ml



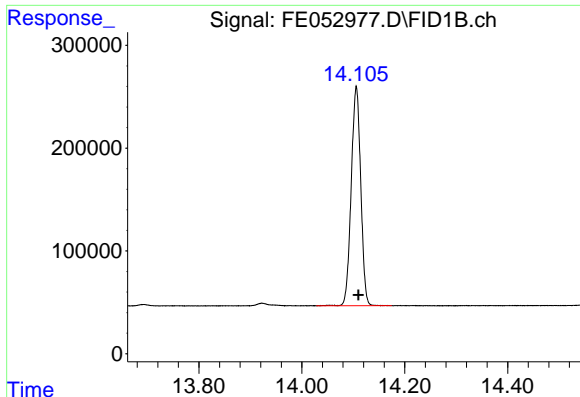
#11 n-Heneicosane (C21)

R.T.: 13.517 min
 Delta R.T.: -0.005 min
 Response: 2750245
 Conc: 19.32 ug/ml



#12 1-chlorooctadecane (SURR)

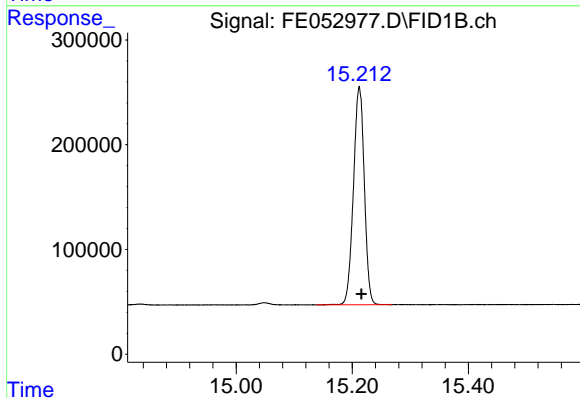
R.T.: 13.349 min
 Delta R.T.: -0.005 min
 Response: 2354690
 Conc: 19.39 ug/ml



#13 n-Docosane (C22)

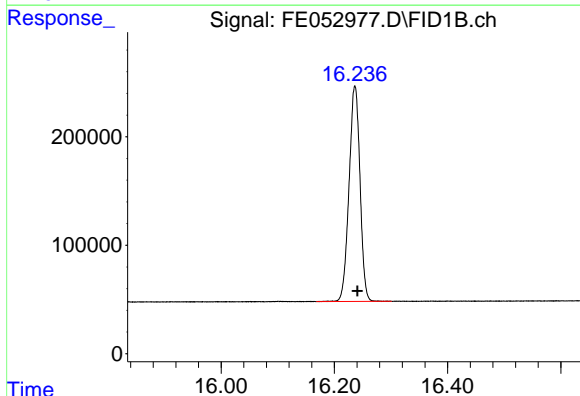
R.T.: 14.106 min
Delta R.T.: -0.004 min
Response: 2730457
Conc: 19.19 ug/ml

Instrument :
FID_E
ClientSampleId :



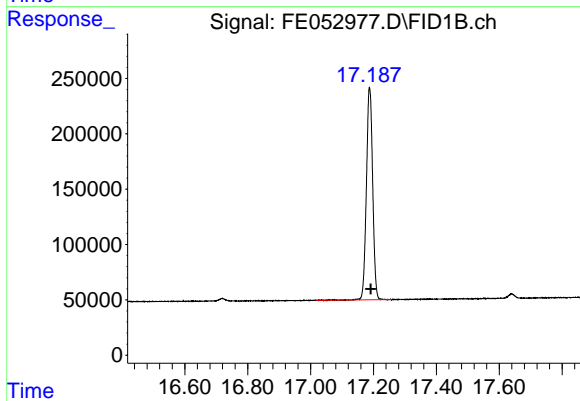
#14 n-Tetracosane (C24)

R.T.: 15.212 min
Delta R.T.: -0.004 min
Response: 2704627
Conc: 18.90 ug/ml



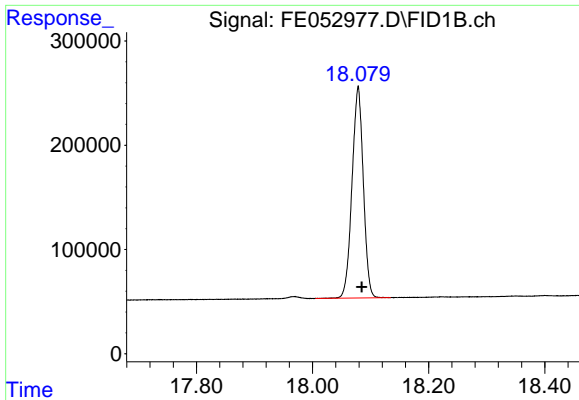
#15 n-Hexacosane (C26)

R.T.: 16.236 min
Delta R.T.: -0.004 min
Response: 2671535
Conc: 18.79 ug/ml



#16 n-Octacosane (C28)

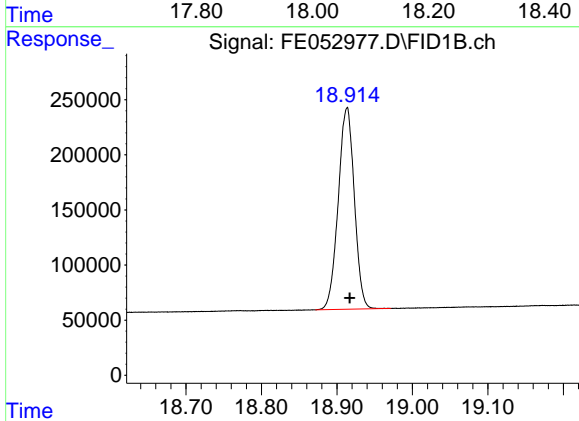
R.T.: 17.188 min
Delta R.T.: -0.004 min
Response: 2648118
Conc: 18.62 ug/ml



#17 n-Tricontane (C30)

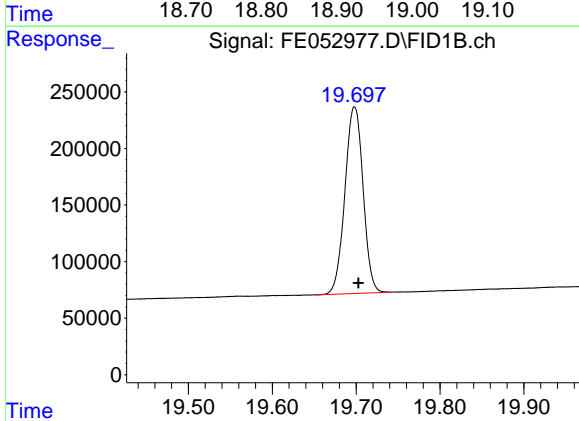
R.T.: 18.078 min
 Delta R.T.: -0.007 min
 Response: 2735005
 Conc: 18.52 ug/ml

Instrument :
 FID_E
 ClientSampleId :



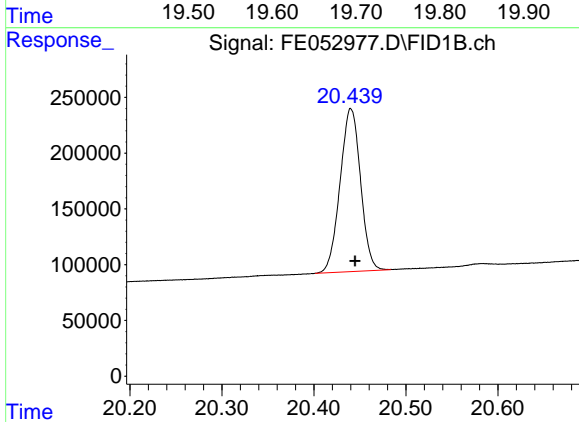
#18 n-Dotriacontane (C32)

R.T.: 18.913 min
 Delta R.T.: -0.004 min
 Response: 2712812
 Conc: 18.69 ug/ml



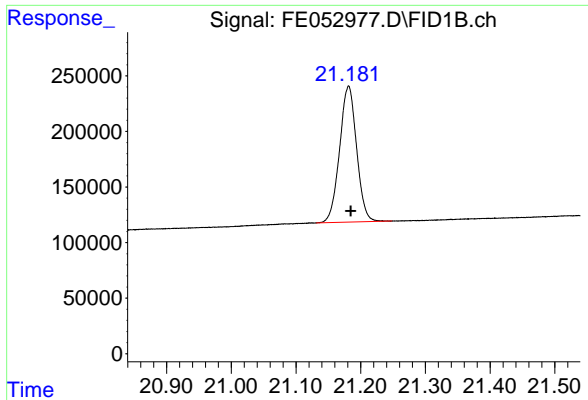
#19 n-Tetratriacontane (C34)

R.T.: 19.698 min
 Delta R.T.: -0.004 min
 Response: 2481605
 Conc: 18.41 ug/ml



#20 n-Hexatriacontane (C36)

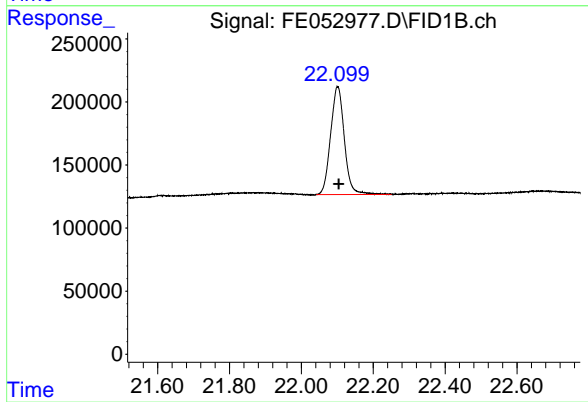
R.T.: 20.440 min
 Delta R.T.: -0.005 min
 Response: 2261300
 Conc: 19.03 ug/ml



#21 n-Octatriacontane (C38)

R.T.: 21.181 min
Delta R.T.: -0.004 min
Response: 2232630
Conc: 20.13 ug/ml

Instrument :
FID_E
ClientSampleId :



#22 n-Tetracontane (C40)

R.T.: 22.101 min
Delta R.T.: -0.003 min
Response: 2270782
Conc: 21.00 ug/ml