

Data Path : Z:\pestpcbsrv\HPCHEM1\FID_E\Data\FE032625AL\
 Data File : FE052993.D
 Signal(s) : FID1B.ch
 Acq On : 26 Mar 2025 22:04
 Operator : YP\AJ
 Sample : 20 PPM ALIPHATIC HC STD
 Misc :
 ALS Vial : 3 Sample Multiplier: 1

Instrument :
 FID_E
 ClientSampleId :

Integration File: autoint1.e
 Quant Time: Mar 27 04:21:42 2025
 Quant Method : Z:\pestpcbsrv\HPCHEM1\FID_E\methods\Aliphatic EPH 030325.M
 Quant Title : GC Extractables
 QLast Update : Mon Mar 03 13:39:39 2025
 Response via : Initial Calibration
 Integrator: ChemStation

Volume Inj. : 1 ul
 Signal Phase : Rxi-1ms
 Signal Info : 20M x 0.18mm x 0.18um

Compound	R.T.	Response	Conc Units

System Monitoring Compounds			
9) S ortho-Terphenyl (SURR)	11.899	3220672	19.104 ug/ml
Spiked Amount	50.000	Recovery =	38.21%
12) S 1-chlorooctadecane (S...	13.344	2387674	19.664 ug/ml
Spiked Amount	50.000	Recovery =	39.33%
Target Compounds			
1) T n-Nonane (C9)	3.243	3096589	19.972 ug/ml
2) T n-Decane (C10)	4.505	3148656	20.043 ug/ml
3) T A~Naphthalene (C11.7)	6.218	3382190	19.943 ug/ml
4) T n-Dodecane (C12)	6.685	3128453	20.093 ug/ml
5) T A~2-methylnaphthalene...	7.320	3216091	19.845 ug/ml
6) T n-Tetradecane (C14)	8.521	3046770	20.136 ug/ml
7) T n-Hexadecane (C16)	10.135	3089236	20.206 ug/ml
8) T n-Octadecane (C18)	11.584	3042479	19.998 ug/ml
10) T n-Eicosane (C20)	12.898	2856675	19.678 ug/ml
11) T n-Heneicosane (C21)	13.512	2783693	19.558 ug/ml
13) T n-Docosane (C22)	14.100	2760650	19.399 ug/ml
14) T n-Tetracosane (C24)	15.206	2733359	19.100 ug/ml
15) T n-Hexacosane (C26)	16.230	2700283	18.990 ug/ml
16) T n-Octacosane (C28)	17.182	2683273	18.870 ug/ml
17) T n-Tricontane (C30)	18.071	2764206	18.715 ug/ml
18) T n-Dotriacontane (C32)	18.906	2730070	18.805 ug/ml
19) T n-Tetratriacontane (C34)	19.691	2532441	18.790 ug/ml
20) T n-Hexatriacontane (C36)	20.432	2268813	19.094 ug/ml
21) T n-Octatriacontane (C38)	21.172	2273608	20.495 ug/ml
22) T n-Tetracontane (C40)	22.089	2188198	20.239 ug/ml

(f)=RT Delta > 1/2 Window

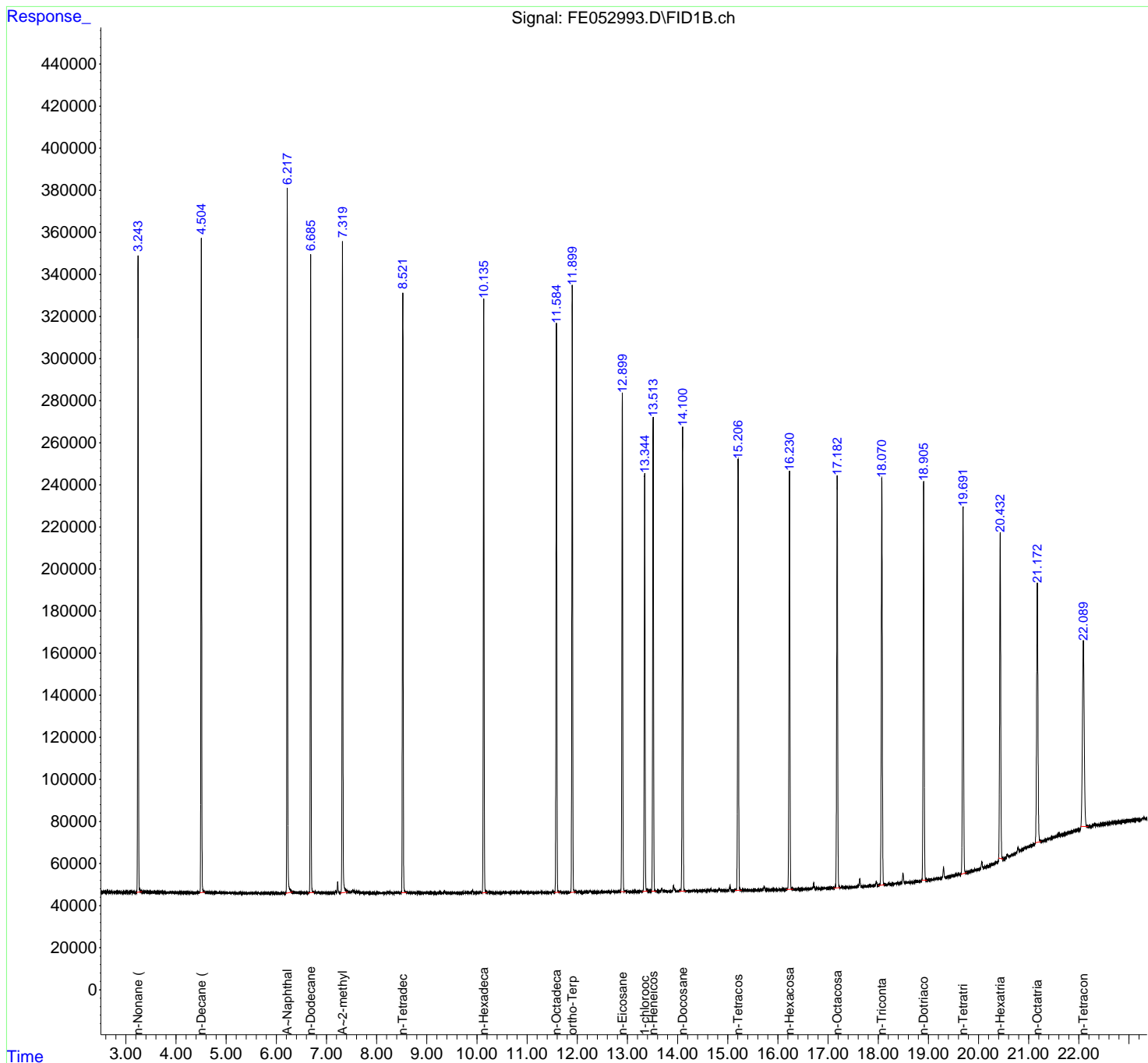
(m)=manual int.

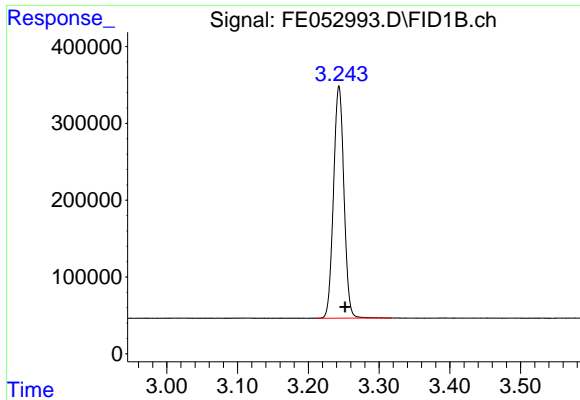
Data Path : Z:\pestpcbsrv\HPCHEM1\FID_E\Data\FE032625AL\
 Data File : FE052993.D
 Signal(s) : FID1B.ch
 Acq On : 26 Mar 2025 22:04
 Operator : YP\AJ
 Sample : 20 PPM ALIPHATIC HC STD
 Misc :
 ALS Vial : 3 Sample Multiplier: 1

Instrument :
 FID_E
 ClientSampleId :

Integration File: autoint1.e
 Quant Time: Mar 27 04:21:42 2025
 Quant Method : Z:\pestpcbsrv\HPCHEM1\FID_E\methods\Aliphatic EPH 030325.M
 Quant Title : GC Extractables
 QLast Update : Mon Mar 03 13:39:39 2025
 Response via : Initial Calibration
 Integrator: ChemStation

Volume Inj. : 1 ul
 Signal Phase : Rxi-1ms
 Signal Info : 20M x 0.18mm x 0.18um

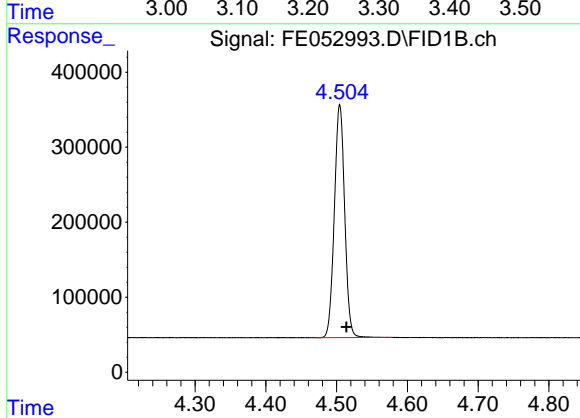




#1 n-Nonane (C9)

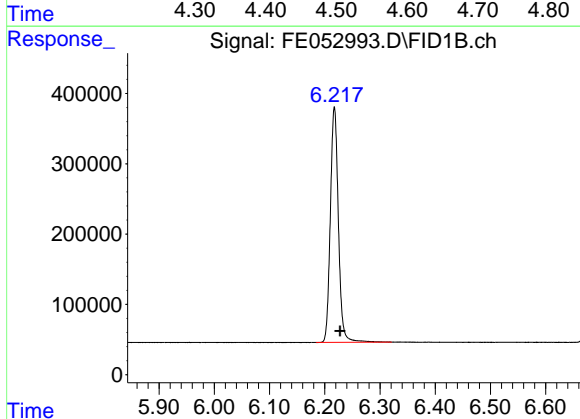
R.T.: 3.243 min
Delta R.T.: -0.009 min
Response: 3096589
Conc: 19.97 ug/ml

Instrument :
FID_E
ClientSampleId :



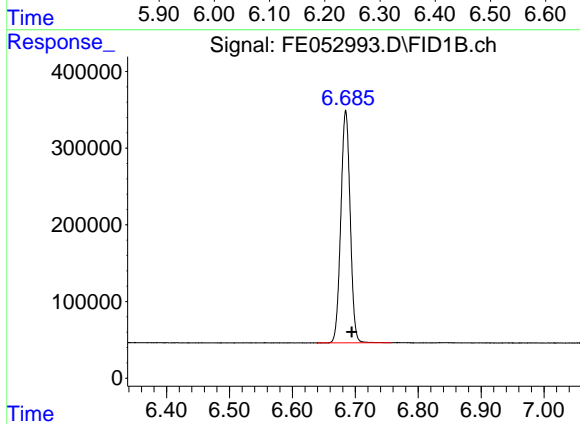
#2 n-Decane (C10)

R.T.: 4.505 min
Delta R.T.: -0.009 min
Response: 3148656
Conc: 20.04 ug/ml



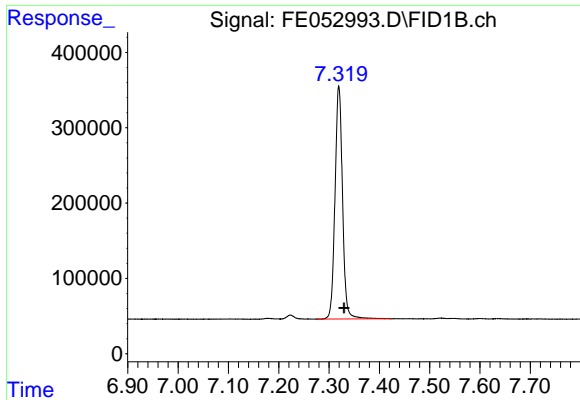
#3 A~Naphthalene (C11.7)

R.T.: 6.218 min
Delta R.T.: -0.010 min
Response: 3382190
Conc: 19.94 ug/ml



#4 n-Dodecane (C12)

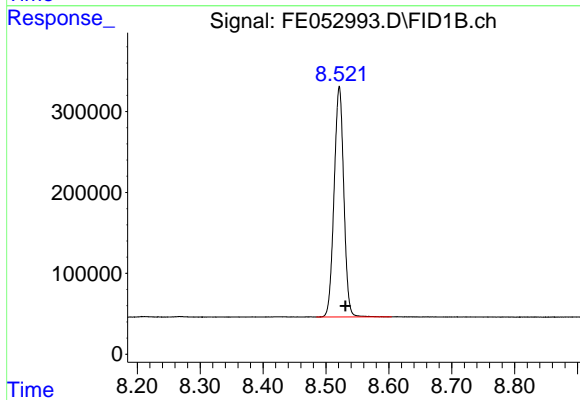
R.T.: 6.685 min
Delta R.T.: -0.010 min
Response: 3128453
Conc: 20.09 ug/ml



#5 A~2-methylnaphthalene (C12.89)

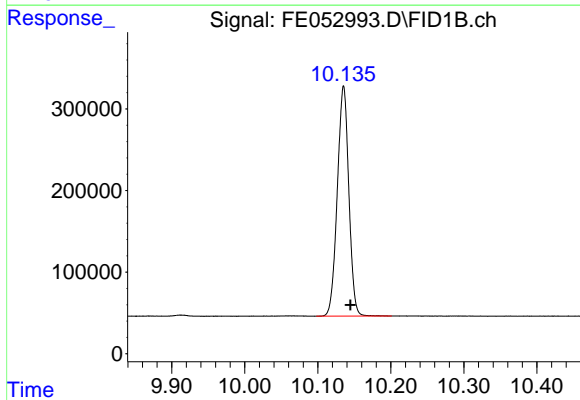
R.T.: 7.320 min
 Delta R.T.: -0.010 min
 Response: 3216091
 Conc: 19.85 ug/ml

Instrument :
 FID_E
 ClientSampleId :



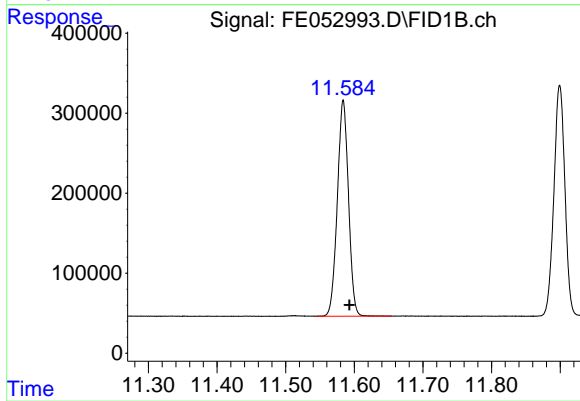
#6 n-Tetradecane (C14)

R.T.: 8.521 min
 Delta R.T.: -0.010 min
 Response: 3046770
 Conc: 20.14 ug/ml



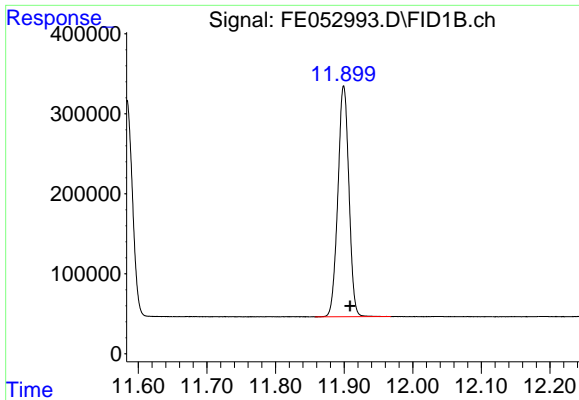
#7 n-Hexadecane (C16)

R.T.: 10.135 min
 Delta R.T.: -0.009 min
 Response: 3089236
 Conc: 20.21 ug/ml



#8 n-Octadecane (C18)

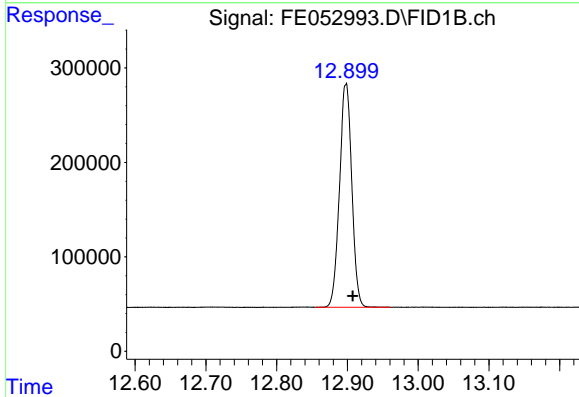
R.T.: 11.584 min
 Delta R.T.: -0.009 min
 Response: 3042479
 Conc: 20.00 ug/ml



#9 ortho-Terphenyl (SURR)

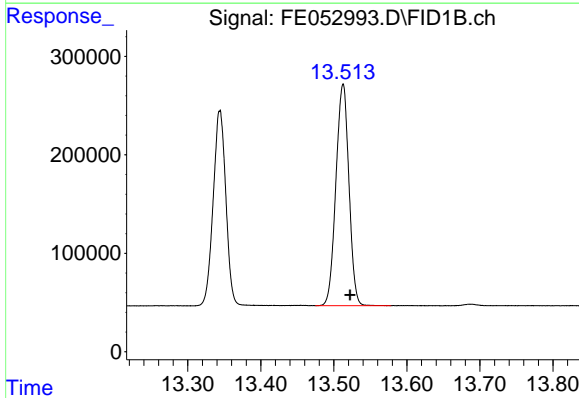
R.T.: 11.899 min
 Delta R.T.: -0.009 min
 Response: 3220672
 Conc: 19.10 ug/ml

Instrument :
 FID_E
 ClientSampleId :



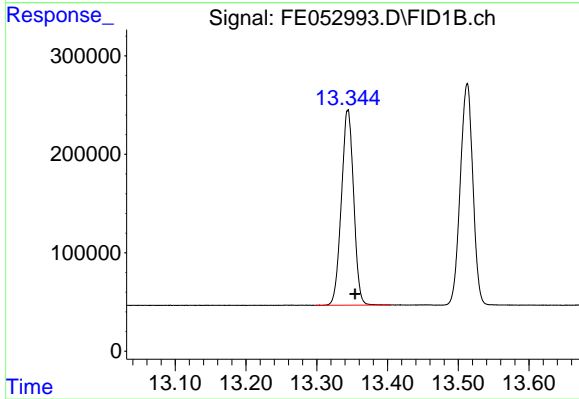
#10 n-Eicosane (C20)

R.T.: 12.898 min
 Delta R.T.: -0.010 min
 Response: 2856675
 Conc: 19.68 ug/ml



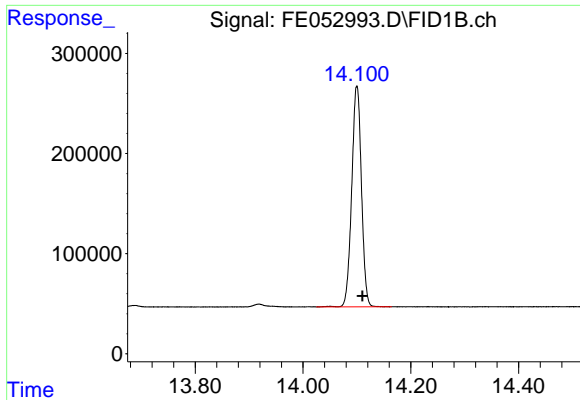
#11 n-Heneicosane (C21)

R.T.: 13.512 min
 Delta R.T.: -0.010 min
 Response: 2783693
 Conc: 19.56 ug/ml



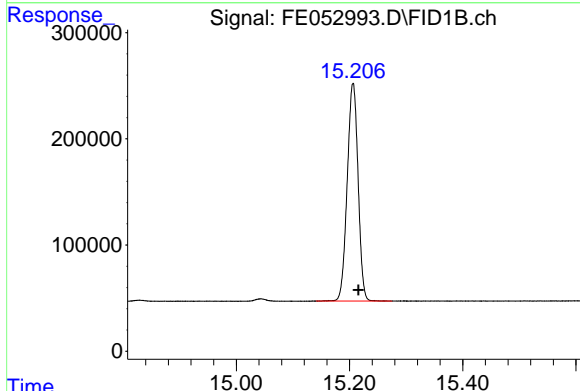
#12 1-chlorooctadecane (SURR)

R.T.: 13.344 min
 Delta R.T.: -0.010 min
 Response: 2387674
 Conc: 19.66 ug/ml

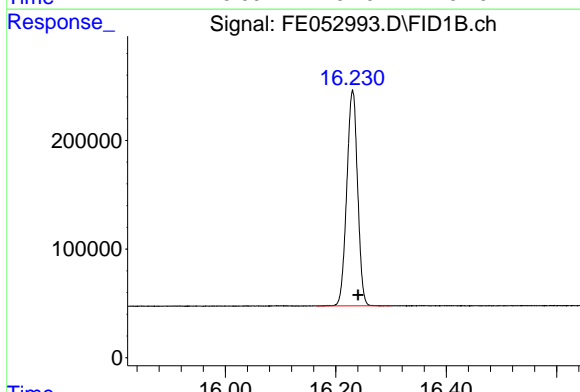


#13 n-Docosane (C22)
 R.T.: 14.100 min
 Delta R.T.: -0.010 min
 Response: 2760650
 Conc: 19.40 ug/ml

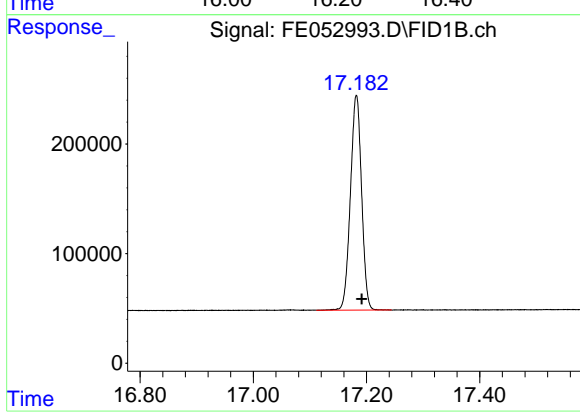
Instrument :
 FID_E
 ClientSampleId :



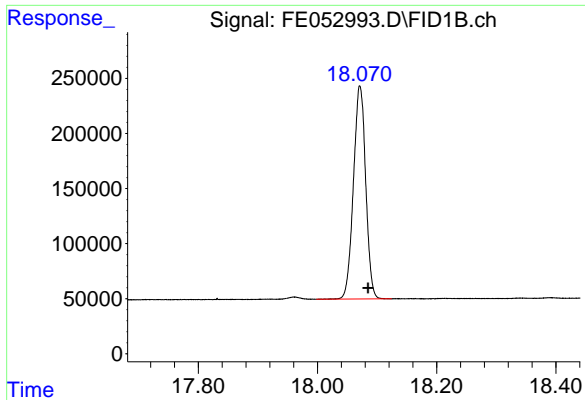
#14 n-Tetracosane (C24)
 R.T.: 15.206 min
 Delta R.T.: -0.010 min
 Response: 2733359
 Conc: 19.10 ug/ml



#15 n-Hexacosane (C26)
 R.T.: 16.230 min
 Delta R.T.: -0.010 min
 Response: 2700283
 Conc: 18.99 ug/ml



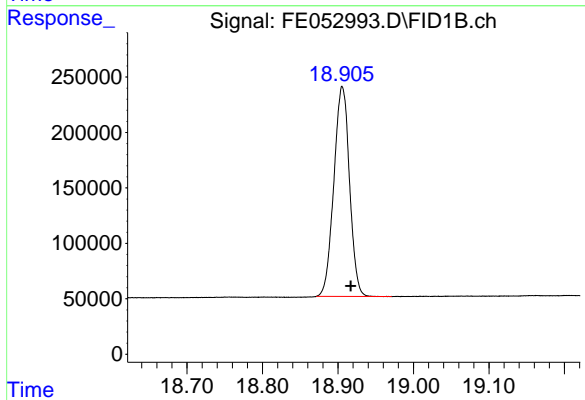
#16 n-Octacosane (C28)
 R.T.: 17.182 min
 Delta R.T.: -0.010 min
 Response: 2683273
 Conc: 18.87 ug/ml



#17 n-Tricontane (C30)

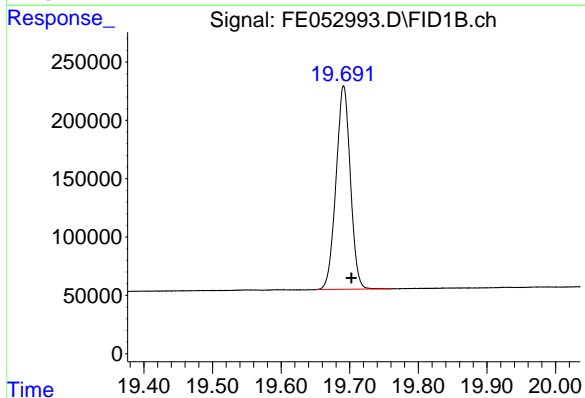
R.T.: 18.071 min
Delta R.T.: -0.014 min
Response: 2764206
Conc: 18.71 ug/ml

Instrument :
FID_E
ClientSampleId :



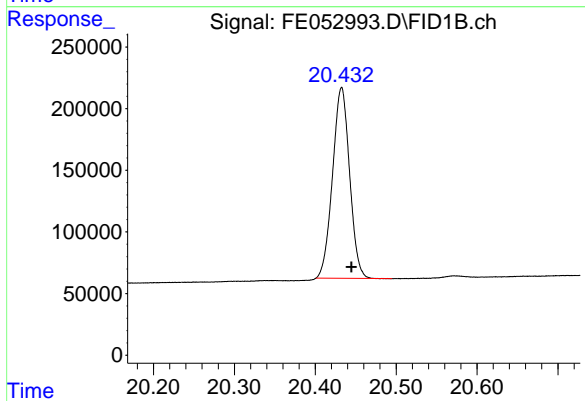
#18 n-Dotriacontane (C32)

R.T.: 18.906 min
Delta R.T.: -0.011 min
Response: 2730070
Conc: 18.80 ug/ml



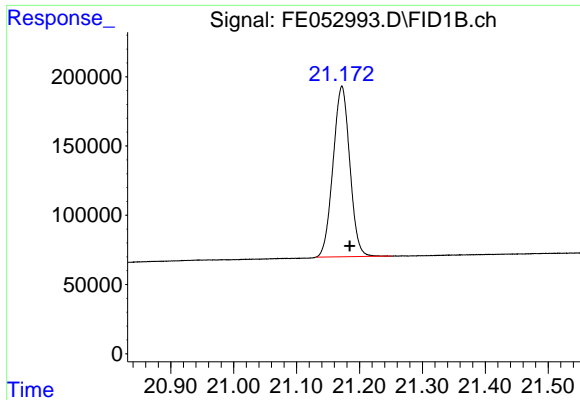
#19 n-Tetratriacontane (C34)

R.T.: 19.691 min
Delta R.T.: -0.011 min
Response: 2532441
Conc: 18.79 ug/ml



#20 n-Hexatriacontane (C36)

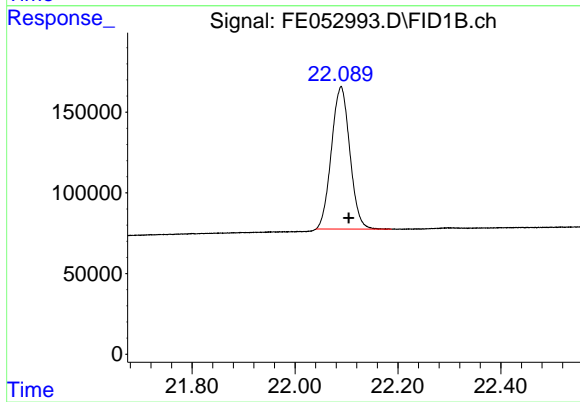
R.T.: 20.432 min
Delta R.T.: -0.012 min
Response: 2268813
Conc: 19.09 ug/ml



#21 n-Octatriacontane (C38)

R.T.: 21.172 min
Delta R.T.: -0.013 min
Response: 2273608
Conc: 20.49 ug/ml

Instrument :
FID_E
ClientSampleId :



#22 n-Tetracontane (C40)

R.T.: 22.089 min
Delta R.T.: -0.015 min
Response: 2188198
Conc: 20.24 ug/ml