

Data Path : Z:\pestpcbsrv\HPCHEM1\FID\_E\Data\FE032719\  
 Data File : FE029788.D  
 Signal(s) : FID1B.CH  
 Acq On : 28 Mar 2019 00:36  
 Operator : AJ\SJ  
 Sample : 4400 PPM TRPH STD  
 Misc :  
 ALS Vial : 3 Sample Multiplier: 1

Integration File: autoint1.e  
 Quant Time: Mar 28 01:51:54 2019  
 Quant Method : Z:\pestpcbsrv\HPCHEM1\FID\_E\methods\C44-FE031919.M  
 Quant Title :  
 QLast Update : Wed Mar 20 08:08:03 2019  
 Response via : Initial Calibration  
 Integrator: ChemStation 6890 Scale Mode: Large solvent peaks clipped

Volume Inj. : 1 ul  
 Signal Phase : Rxi-1ms  
 Signal Info : 20m x 0.18mm x 0.18um

Compound	R.T.	Response	Conc Units
-----			
System Monitoring Compounds			
13) S TETRACOSANE-d50 (SURR...	14.645	8258737	49.795 ug/ml
Target Compounds			
1) N-OCTANE	2.387	63454960	483.323 ug/ml
2) N-NONANE	3.369	65782299	469.507 ug/ml
3) N-DECANE	4.431	101355121	454.619 ug/ml
4) N-UNDECANE	5.462	101957688	653.936 ug/ml
5) N-DODECANE	6.445	102624654	634.466 ug/ml
6) N-TETRADECANE	8.242	103160810	590.169 ug/ml
7) N-HEXADECANE	9.840	85706427	468.189 ug/ml
8) N-OCTADECANE	11.263	42640916	228.250 ug/ml
9) N-EICOSANE	12.555	16825470	92.671 ug/ml
10) N-TETRACOSANE	14.859	16395504	104.697 ug/ml
11) N-OCTACOSANE	16.822	8020008	55.491 ug/ml
12) N-DOTRIACONTANE	18.544	7178983	43.812 ug/ml
14) N-HEXATRIACONTANE	20.064	4430652	30.652 ug/ml
15) N-TETRACONTANE	21.677	3563800	28.624 ug/ml
16) N-TETRTETRACOCTANE	24.345	3091027	31.613 ug/ml
-----			

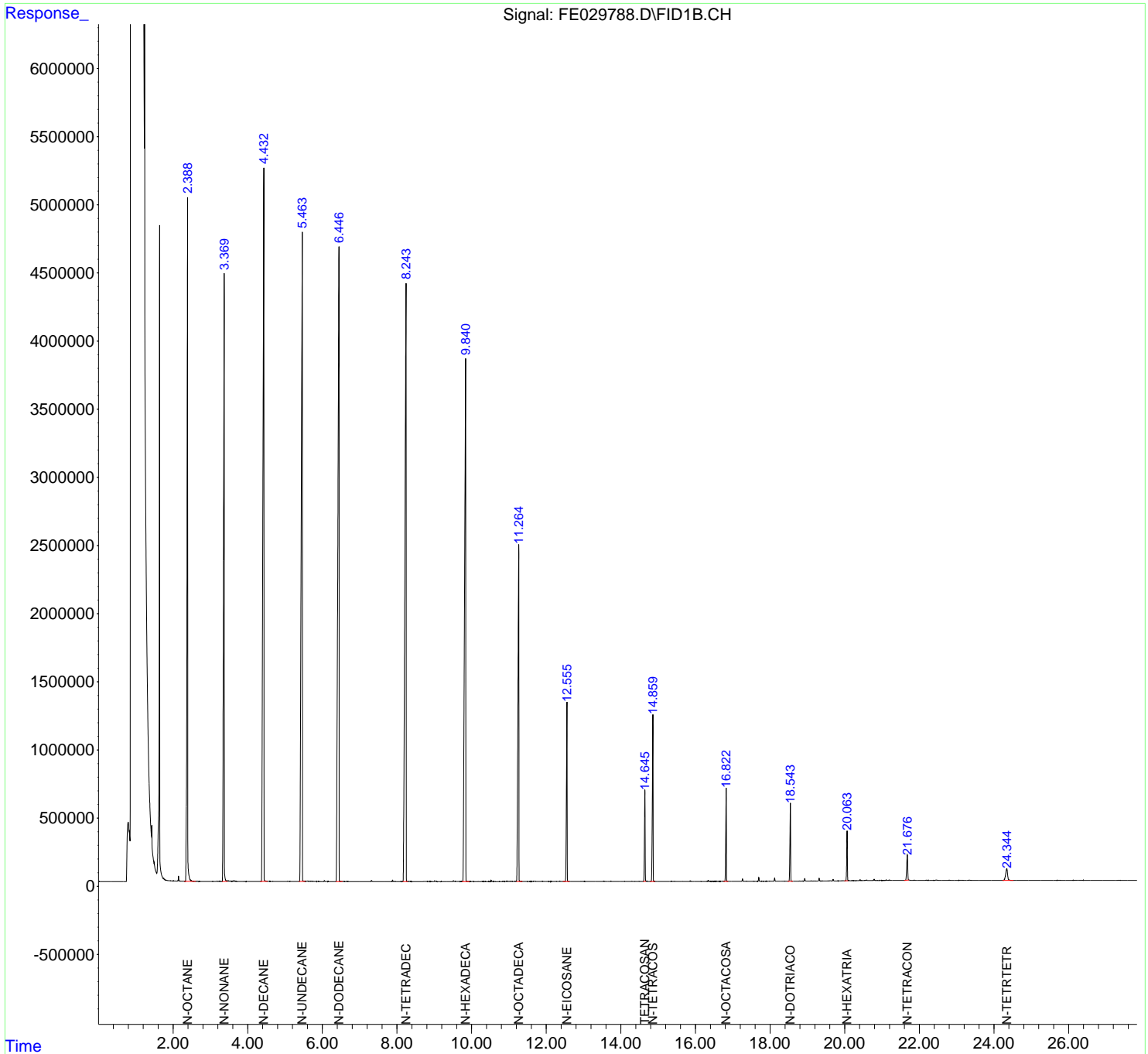
(f)=RT Delta > 1/2 Window

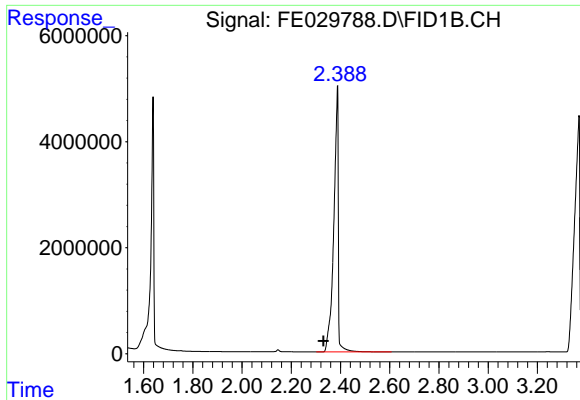
(m)=manual int.

Data Path : Z:\pestpcbsrv\HPCHEM1\FID\_E\Data\FE032719\  
 Data File : FE029788.D  
 Signal(s) : FID1B.CH  
 Acq On : 28 Mar 2019 00:36  
 Operator : AJ\SJ  
 Sample : 4400 PPM TRPH STD  
 Misc :  
 ALS Vial : 3 Sample Multiplier: 1

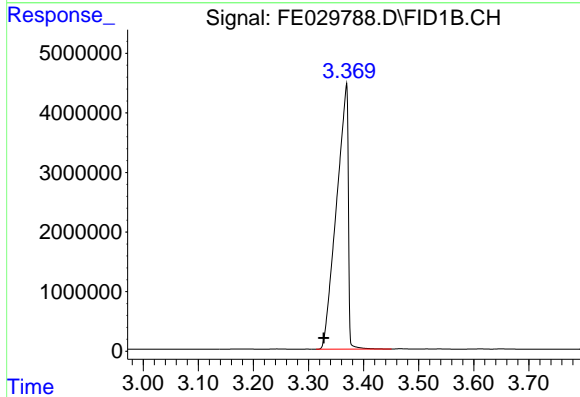
Integration File: autoint1.e  
 Quant Time: Mar 28 01:51:54 2019  
 Quant Method : Z:\pestpcbsrv\HPCHEM1\FID\_E\methods\C44-FE031919.M  
 Quant Title :  
 QLast Update : Wed Mar 20 08:08:03 2019  
 Response via : Initial Calibration  
 Integrator: ChemStation 6890 Scale Mode: Large solvent peaks clipped

Volume Inj. : 1 ul  
 Signal Phase : Rxi-1ms  
 Signal Info : 20m x 0.18mm x 0.18um

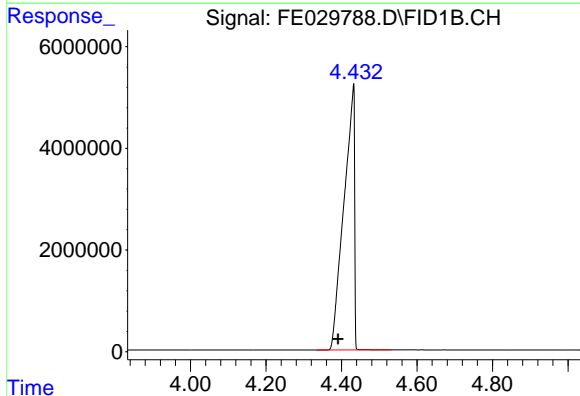




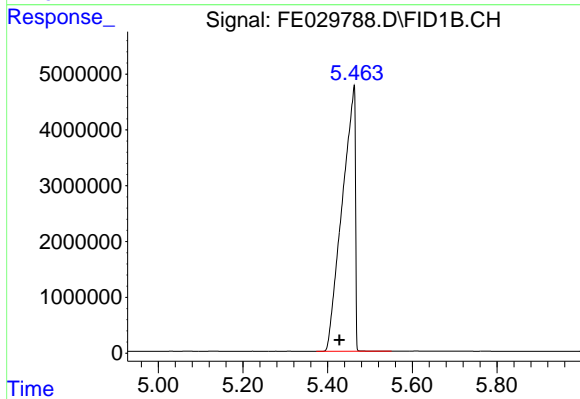
#1 N-OCTANE  
R.T.: 2.387 min  
Delta R.T.: 0.056 min  
Response: 63454960  
Conc: 483.32 ug/ml



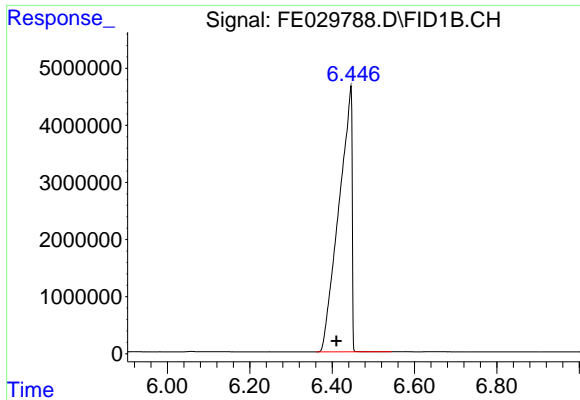
#2 N-NONANE  
R.T.: 3.369 min  
Delta R.T.: 0.041 min  
Response: 65782299  
Conc: 469.51 ug/ml



#3 N-DECANE  
R.T.: 4.431 min  
Delta R.T.: 0.040 min  
Response: 101355121  
Conc: 454.62 ug/ml

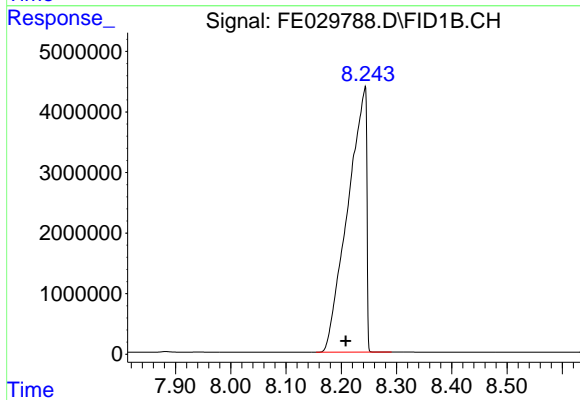


#4 N-UNDECANE  
R.T.: 5.462 min  
Delta R.T.: 0.034 min  
Response: 101957688  
Conc: 653.94 ug/ml



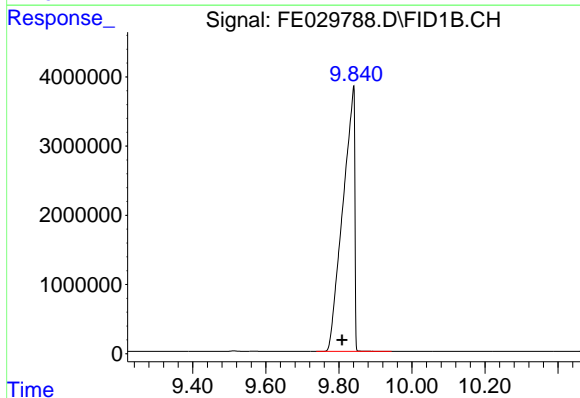
#5 N-DODECANE

R.T.: 6.445 min  
Delta R.T.: 0.034 min  
Response: 102624654  
Conc: 634.47 ug/ml



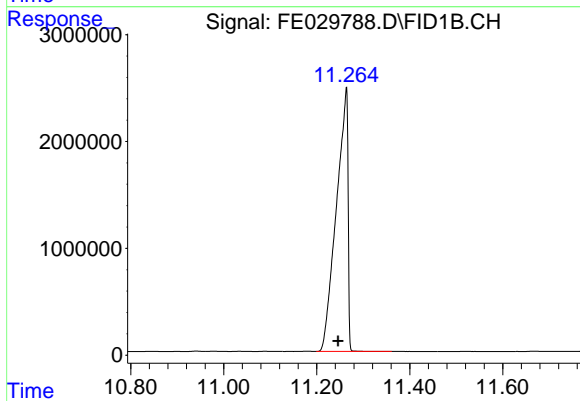
#6 N-TETRADECANE

R.T.: 8.242 min  
Delta R.T.: 0.034 min  
Response: 103160810  
Conc: 590.17 ug/ml



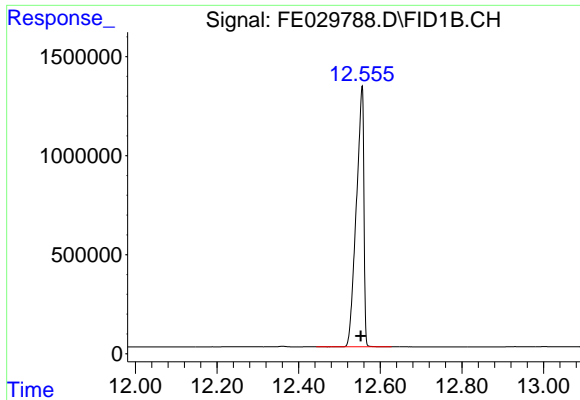
#7 N-HEXADECANE

R.T.: 9.840 min  
Delta R.T.: 0.031 min  
Response: 85706427  
Conc: 468.19 ug/ml

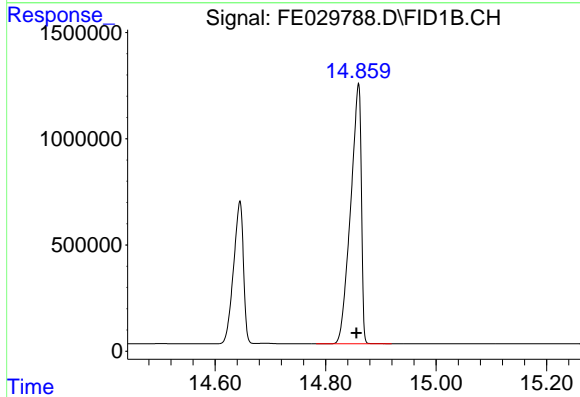


#8 N-OCTADECANE

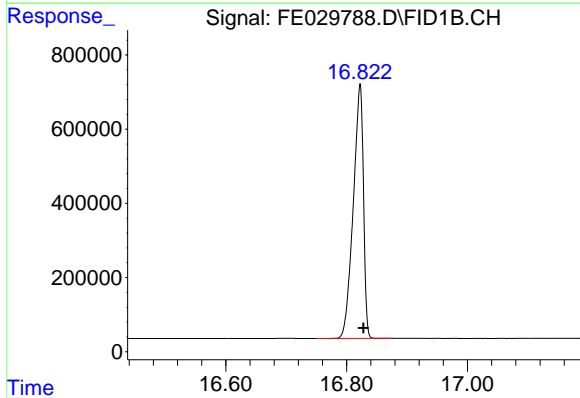
R.T.: 11.263 min  
Delta R.T.: 0.017 min  
Response: 42640916  
Conc: 228.25 ug/ml



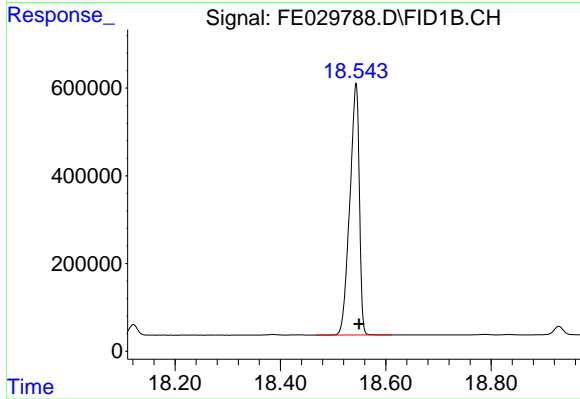
#9 N-EICOSANE  
R.T.: 12.555 min  
Delta R.T.: 0.004 min  
Response: 16825470  
Conc: 92.67 ug/ml



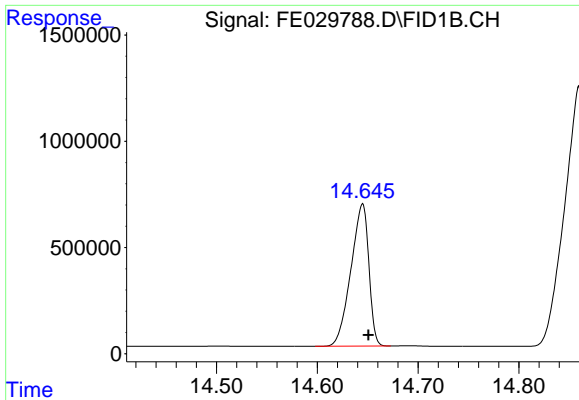
#10 N-TETRACOSANE  
R.T.: 14.859 min  
Delta R.T.: 0.004 min  
Response: 16395504  
Conc: 104.70 ug/ml



#11 N-OCTACOSANE  
R.T.: 16.822 min  
Delta R.T.: -0.005 min  
Response: 8020008  
Conc: 55.49 ug/ml

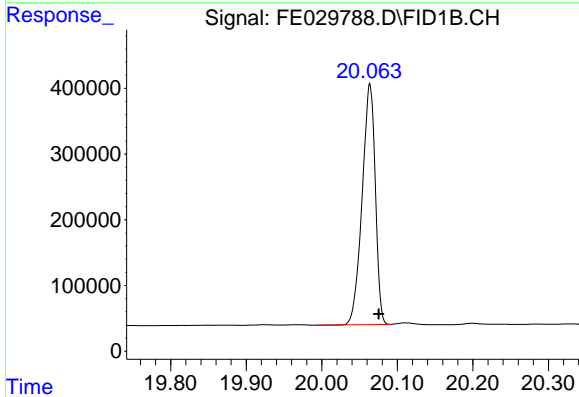


#12 N-DOTRIACONTANE  
R.T.: 18.544 min  
Delta R.T.: -0.006 min  
Response: 7178983  
Conc: 43.81 ug/ml



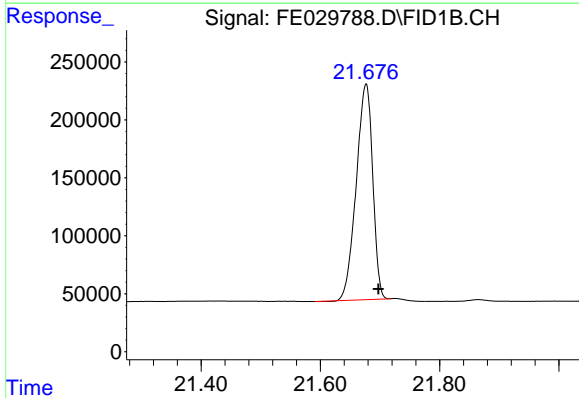
#13 TETRACOSANE-d50 (SURROGATE)

R.T.: 14.645 min  
Delta R.T.: -0.006 min  
Response: 8258737  
Conc: 49.80 ug/ml



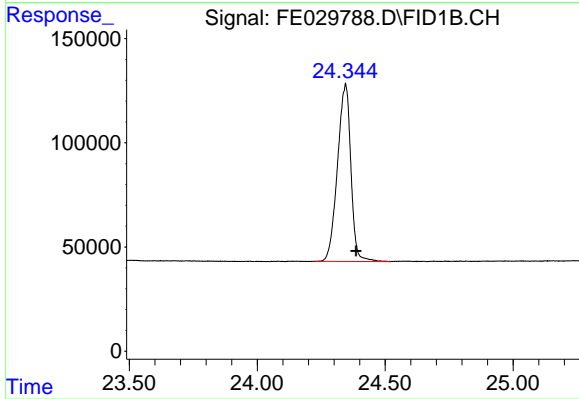
#14 N-HEXATRIACONTANE

R.T.: 20.064 min  
Delta R.T.: -0.012 min  
Response: 4430652  
Conc: 30.65 ug/ml



#15 N-TETRACONTANE

R.T.: 21.677 min  
Delta R.T.: -0.021 min  
Response: 3563800  
Conc: 28.62 ug/ml



#16 N-TETRTETRAOCTANE

R.T.: 24.345 min  
Delta R.T.: -0.041 min  
Response: 3091027  
Conc: 31.61 ug/ml