

Data Path : Z:\pestpcbsrv\HPCHEM1\FID_E\Data\FE032724AL\
 Data File : FE047363.D
 Signal(s) : FID1B.ch
 Acq On : 27 Mar 2024 21:45
 Operator : YP\AJ
 Sample : P1874-01
 Misc :
 ALS Vial : 19 Sample Multiplier: 1

Integration File: autoint1.e
 Quant Time: Mar 28 02:56:33 2024
 Quant Method : Z:\pestpcbsrv\HPCHEM1\FID_E\methods\Aliphatic EPH 032324.M
 Quant Title : GC Extractables
 QLast Update : Sat Mar 23 01:31:33 2024
 Response via : Initial Calibration
 Integrator: ChemStation

Volume Inj. : 1 ul
 Signal Phase : Rxi-1ms
 Signal Info : 20M x 0.18mm x 0.18um

Compound	R.T.	Response	Conc Units

System Monitoring Compounds			
9) S ortho-Terphenyl (SURR)	11.984	6048141	38.621 ug/ml
Spiked Amount	50.000	Recovery	= 77.24%
12) S 1-chlorooctadecane (S...	13.416	5092859	41.993 ug/ml
Spiked Amount	50.000	Recovery	= 83.99%

Target Compounds

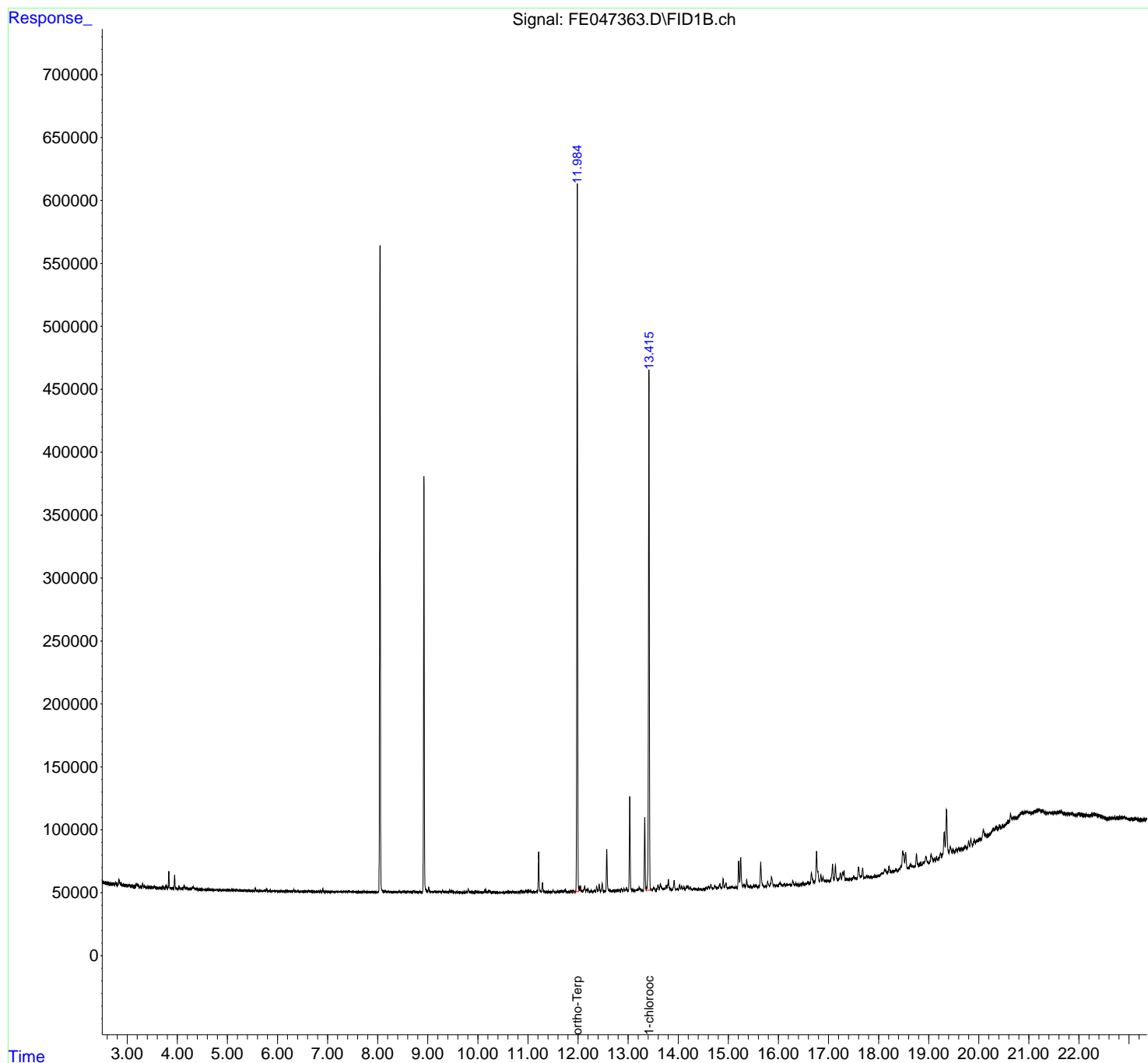
(f)=RT Delta > 1/2 Window

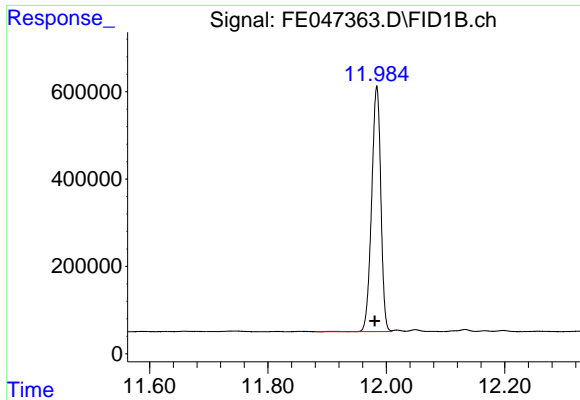
(m)=manual int.

Data Path : Z:\pestpcbsrv\HPCHEM1\FID_E\Data\FE032724AL\
 Data File : FE047363.D
 Signal(s) : FID1B.ch
 Acq On : 27 Mar 2024 21:45
 Operator : YP\AJ
 Sample : P1874-01
 Misc :
 ALS Vial : 19 Sample Multiplier: 1

Integration File: autoint1.e
 Quant Time: Mar 28 02:56:33 2024
 Quant Method : Z:\pestpcbsrv\HPCHEM1\FID_E\methods\Aliphatic EPH 032324.M
 Quant Title : GC Extractables
 QLast Update : Sat Mar 23 01:31:33 2024
 Response via : Initial Calibration
 Integrator: ChemStation

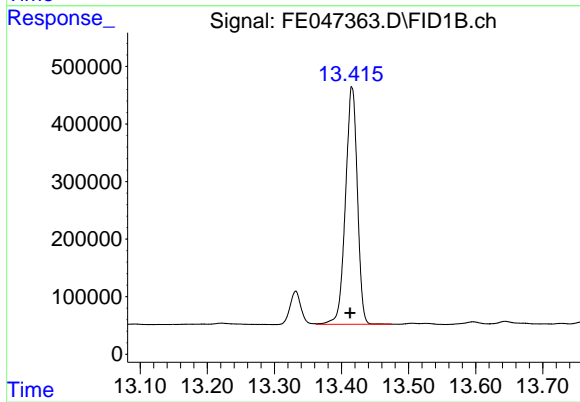
Volume Inj. : 1 ul
 Signal Phase : Rxi-1ms
 Signal Info : 20M x 0.18mm x 0.18um





#9 ortho-Terphenyl (SURR)

R.T.: 11.984 min
Delta R.T.: 0.003 min
Response: 6048141
Conc: 38.62 ug/ml



#12 1-chlorooctadecane (SURR)

R.T.: 13.416 min
Delta R.T.: 0.003 min
Response: 5092859
Conc: 41.99 ug/ml