

Data Path : Z:\pestpcbsrv\HPCHEM1\FID_E\Data\FE032824AL\
 Data File : FE047384.D
 Signal(s) : FID1B.ch
 Acq On : 28 Mar 2024 17:09
 Operator : YP\AJ
 Sample : P1900-01MS
 Misc :
 ALS Vial : 13 Sample Multiplier: 1

Instrument :
 FID_E
 ClientSampleId :
 SS-1MS

Manual Integrations
 APPROVED

Reviewed By :Yogesh Patel 03/29/2024
 Supervised By :Ankita Jodhani 03/29/2024

Integration File: sample.E
 Quant Time: Mar 29 01:23:44 2024
 Quant Method : Z:\pestpcbsrv\HPCHEM1\FID_E\methods\Aliphatic EPH 032324.M
 Quant Title : GC Extractables
 QLast Update : Sat Mar 23 01:31:33 2024
 Response via : Initial Calibration
 Integrator: ChemStation

Volume Inj. : 1 ul
 Signal Phase : Rxi-1ms
 Signal Info : 20M x 0.18mm x 0.18um

Compound	R.T.	Response	Conc Units

System Monitoring Compounds			
9) S ortho-Terphenyl (SURR)	11.982	4846135	30.945 ug/mlm
Spiked Amount	50.000	Recovery	= 61.89%
12) S 1-chlorooctadecane (S...	13.415	4040917	33.319 ug/ml
Spiked Amount	50.000	Recovery	= 66.64%
Target Compounds			
1) T n-Nonane (C9)	3.366	3797625	26.005 ug/ml
2) T n-Decane (C10)	4.618	4258951	28.571 ug/ml
3) T A~Naphthalene (C11.7)	6.324	4614888	29.746 ug/ml
4) T n-Dodecane (C12)	6.783	4633380	30.981 ug/ml
5) T A~2-methylnaphthalene...	7.420	4731443	31.616 ug/ml
6) T n-Tetradecane (C14)	8.612	4954465	33.591 ug/ml
7) T n-Hexadecane (C16)	10.218	5287129	34.931 ug/ml
8) T n-Octadecane (C18)	11.661	5546615	36.508 ug/ml
10) T n-Eicosane (C20)	12.970	5585157	38.388 ug/ml
11) T n-Heneicosane (C21)	13.581	5423939	37.950 ug/ml
13) T n-Docosane (C22)	14.167	5387457	37.952 ug/ml
14) T n-Tetracosane (C24)	15.267	8968361	63.617 ug/ml
15) T n-Hexacosane (C26)	16.289	5287132	38.022 ug/mlm
16) T n-Octacosane (C28)	17.237	5332032	39.022 ug/ml
17) T n-Tricontane (C30)	18.124	5449946	39.252 ug/ml
18) T n-Dotriacontane (C32)	18.954	5370558	38.934 ug/mlm
19) T n-Tetratriacontane (C34)	19.736	5431625	39.632 ug/mlm
20) T n-Hexatriacontane (C36)	20.475	5427428	39.741 ug/ml
21) T n-Octatriacontane (C38)	21.219	5768177	41.612 ug/ml
22) T n-Tetracontane (C40)	22.151	6104035	42.608 ug/ml

(f)=RT Delta > 1/2 Window

(m)=manual int.

Data Path : Z:\pestpcbsrv\HPCHEM1\FID_E\Data\FE032824AL\
 Data File : FE047384.D
 Signal(s) : FID1B.ch
 Acq On : 28 Mar 2024 17:09
 Operator : YP\AJ
 Sample : P1900-01MS
 Misc :
 ALS Vial : 13 Sample Multiplier: 1

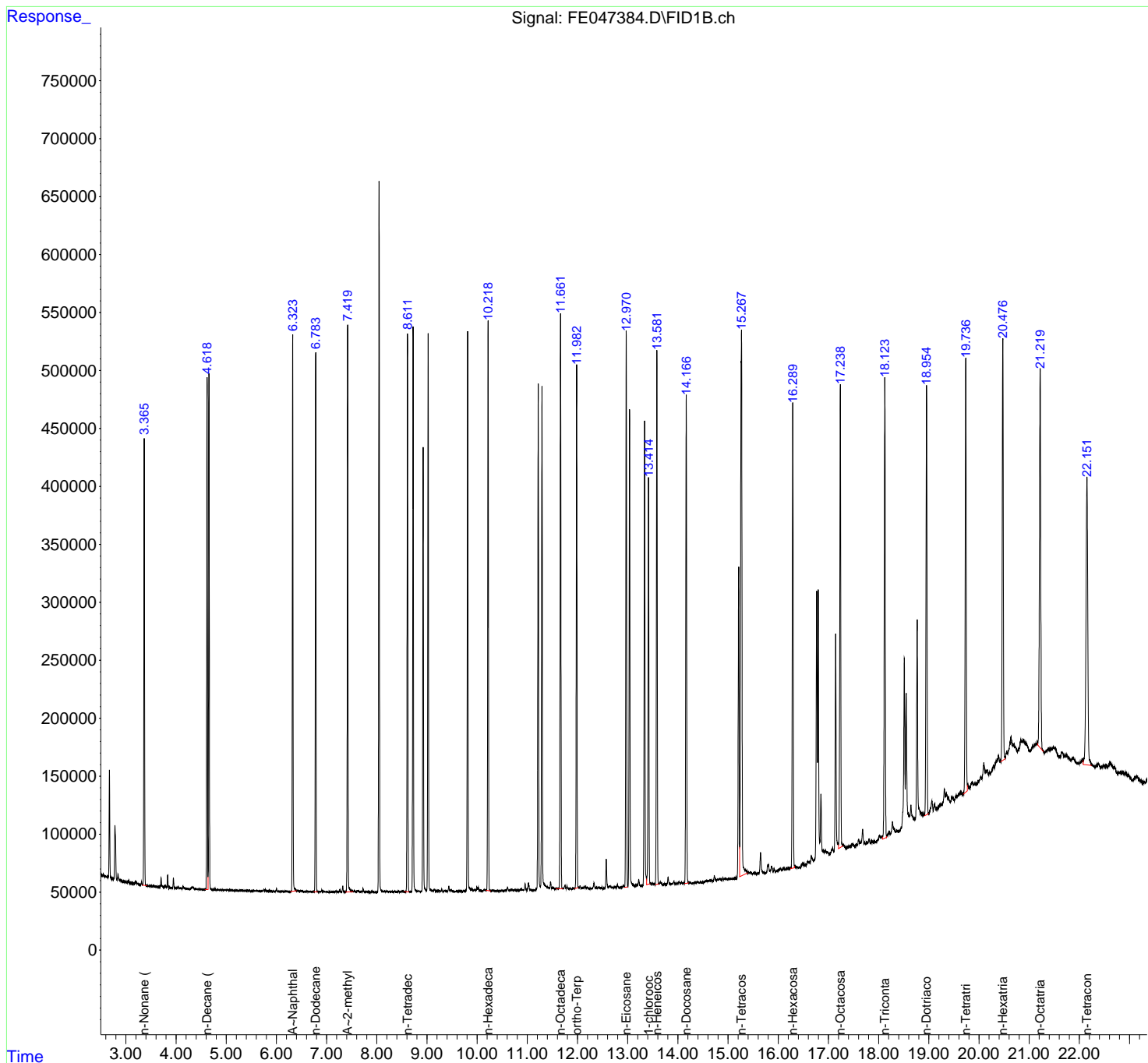
Instrument :
 FID_E
ClientSampleId :
 SS-1MS

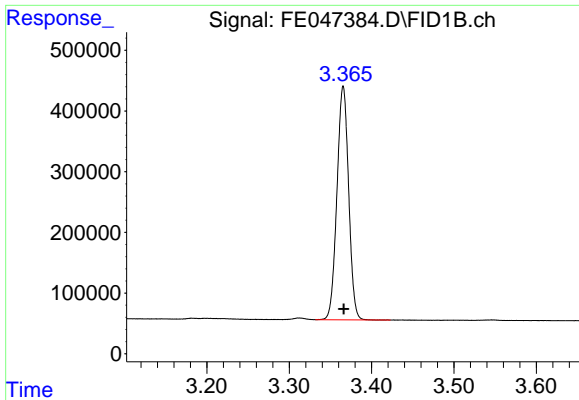
Manual Integrations
APPROVED

Reviewed By :Yogesh Patel 03/29/2024
 Supervised By :Ankita Jodhani 03/29/2024

Integration File: sample.E
 Quant Time: Mar 29 01:23:44 2024
 Quant Method : Z:\pestpcbsrv\HPCHEM1\FID_E\methods\Aliphatic EPH 032324.M
 Quant Title : GC Extractables
 QLast Update : Sat Mar 23 01:31:33 2024
 Response via : Initial Calibration
 Integrator: ChemStation

Volume Inj. : 1 ul
 Signal Phase : Rxi-1ms
 Signal Info : 20M x 0.18mm x 0.18um





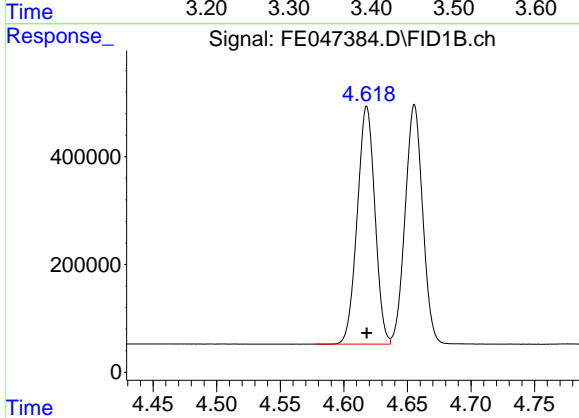
#1 n-Nonane (C9)

R.T.: 3.366 min
 Delta R.T.: 0.000 min
 Response: 3797625
 Conc: 26.00 ug/ml

Instrument : FID_E
 ClientSampleId : SS-1MS

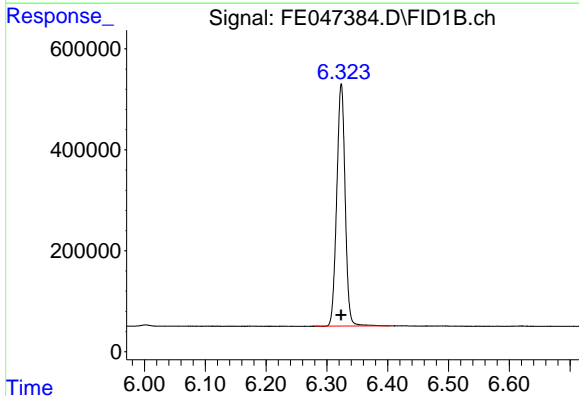
Manual Integrations
 APPROVED

Reviewed By :Yogesh Patel 03/29/2024
 Supervised By :Ankita Jodhani 03/29/2024



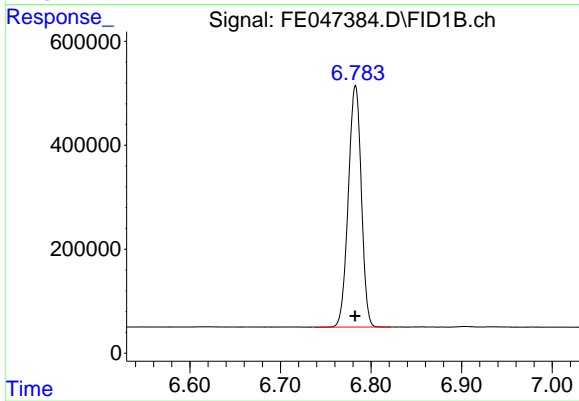
#2 n-Decane (C10)

R.T.: 4.618 min
 Delta R.T.: 0.000 min
 Response: 4258951
 Conc: 28.57 ug/ml



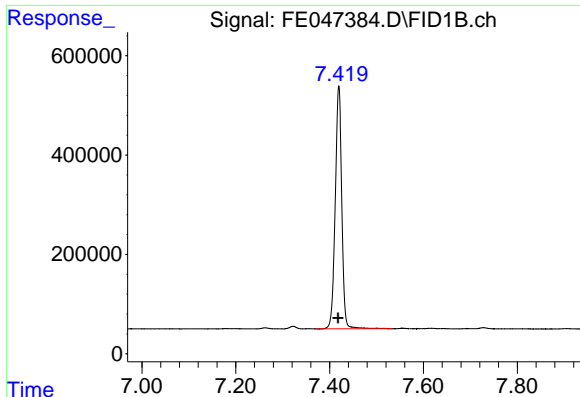
#3 A~Naphthalene (C11.7)

R.T.: 6.324 min
 Delta R.T.: 0.000 min
 Response: 4614888
 Conc: 29.75 ug/ml



#4 n-Dodecane (C12)

R.T.: 6.783 min
 Delta R.T.: 0.000 min
 Response: 4633380
 Conc: 30.98 ug/ml



#5 A~2-methylnaphthalene (C12.89)

R.T.: 7.420 min
 Delta R.T.: 0.001 min
 Response: 4731443
 Conc: 31.62 ug/ml

Instrument :

FID_E

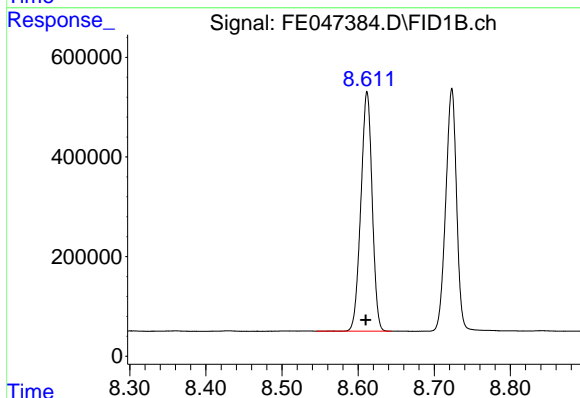
ClientSampleId :

SS-1MS

Manual Integrations

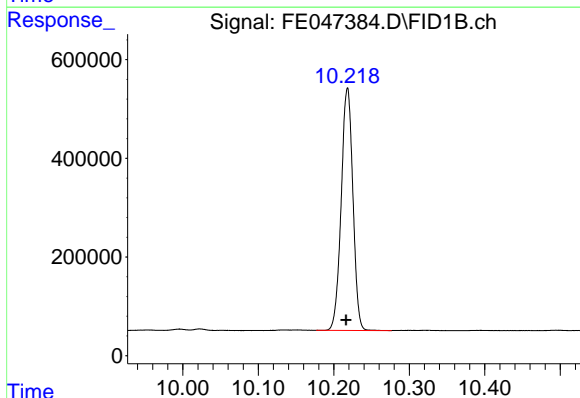
APPROVED

Reviewed By :Yogesh Patel 03/29/2024
 Supervised By :Ankita Jodhani 03/29/2024



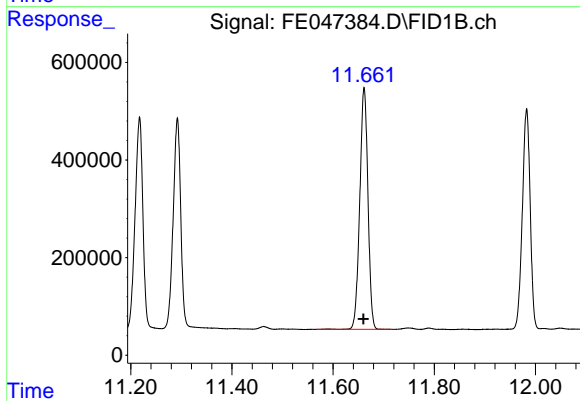
#6 n-Tetradecane (C14)

R.T.: 8.612 min
 Delta R.T.: 0.002 min
 Response: 4954465
 Conc: 33.59 ug/ml



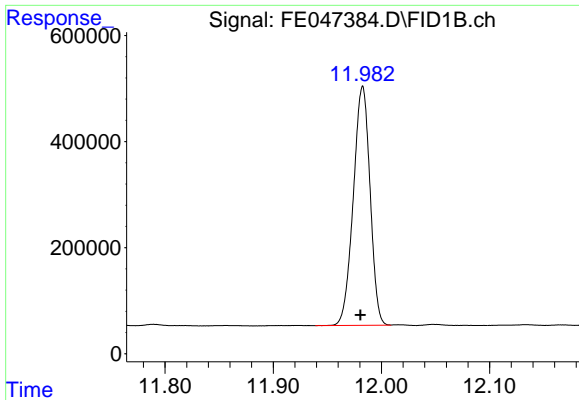
#7 n-Hexadecane (C16)

R.T.: 10.218 min
 Delta R.T.: 0.002 min
 Response: 5287129
 Conc: 34.93 ug/ml



#8 n-Octadecane (C18)

R.T.: 11.661 min
 Delta R.T.: 0.002 min
 Response: 5546615
 Conc: 36.51 ug/ml



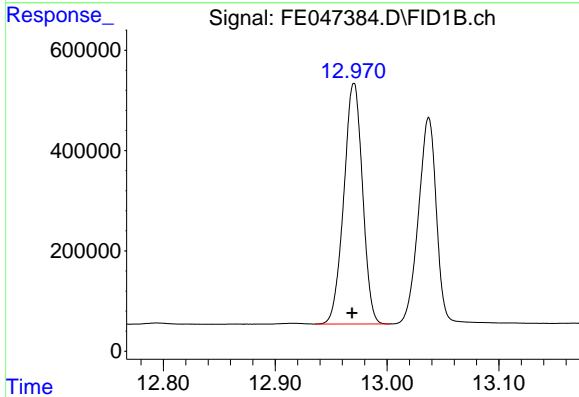
#9 ortho-Terphenyl (SURR)

R.T.: 11.982 min
 Delta R.T.: 0.002 min
 Response: 4846135
 Conc: 30.95 ug/ml

Instrument : FID_E
 ClientSampleId : SS-1MS

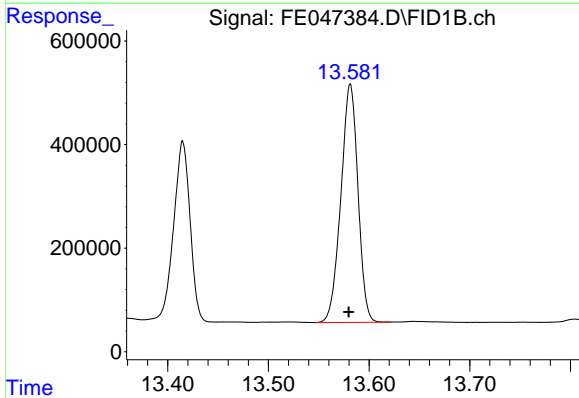
Manual Integrations
 APPROVED

Reviewed By :Yogesh Patel 03/29/2024
 Supervised By :Ankita Jodhani 03/29/2024



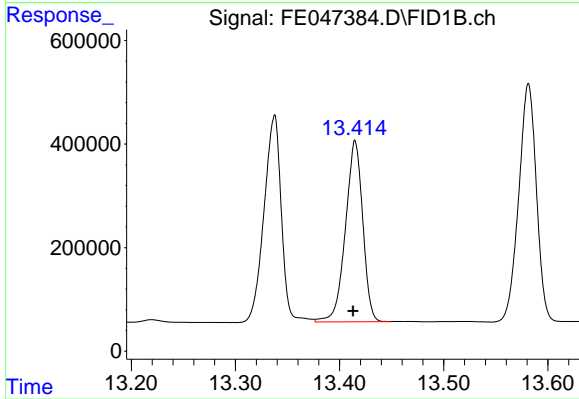
#10 n-Eicosane (C20)

R.T.: 12.970 min
 Delta R.T.: 0.002 min
 Response: 5585157
 Conc: 38.39 ug/ml



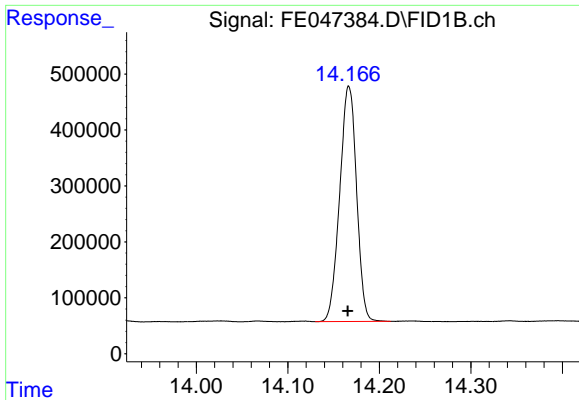
#11 n-Heneicosane (C21)

R.T.: 13.581 min
 Delta R.T.: 0.002 min
 Response: 5423939
 Conc: 37.95 ug/ml



#12 1-chlorooctadecane (SURR)

R.T.: 13.415 min
 Delta R.T.: 0.002 min
 Response: 4040917
 Conc: 33.32 ug/ml



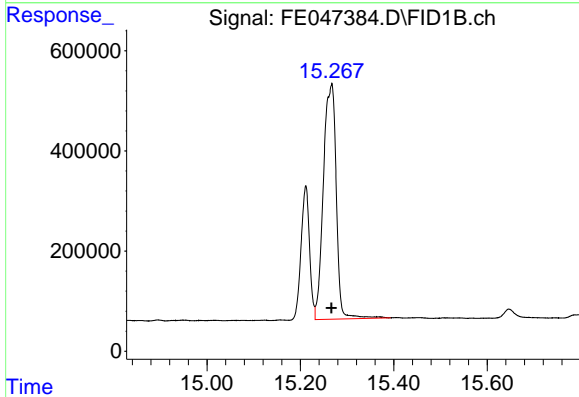
#13 n-Docosane (C22)

R.T.: 14.167 min
 Delta R.T.: 0.001 min
 Response: 5387457
 Conc: 37.95 ug/ml

Instrument :
 FID_E
 ClientSampleId :
 SS-1MS

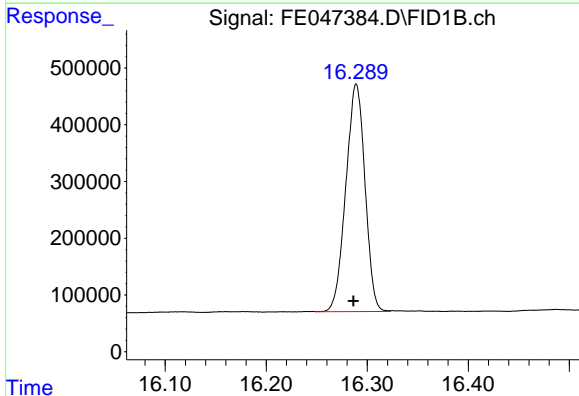
Manual Integrations
 APPROVED

Reviewed By :Yogesh Patel 03/29/2024
 Supervised By :Ankita Jodhani 03/29/2024



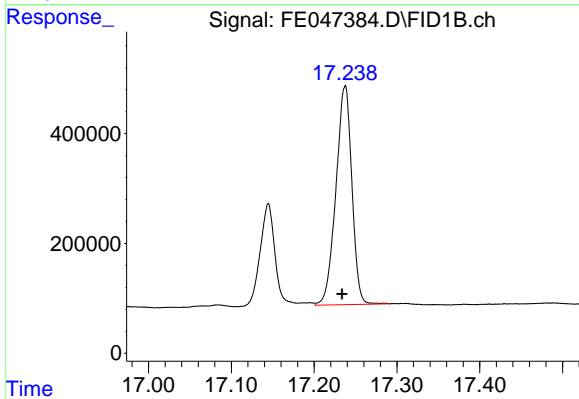
#14 n-Tetracosane (C24)

R.T.: 15.267 min
 Delta R.T.: 0.001 min
 Response: 8968361
 Conc: 63.62 ug/ml



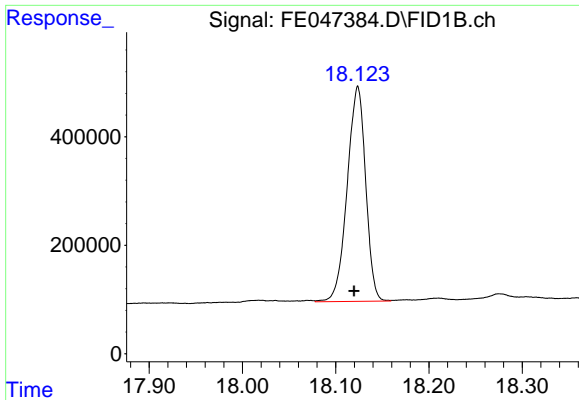
#15 n-Hexacosane (C26)

R.T.: 16.289 min
 Delta R.T.: 0.003 min
 Response: 5287132
 Conc: 38.02 ug/ml m



#16 n-Octacosane (C28)

R.T.: 17.237 min
 Delta R.T.: 0.004 min
 Response: 5332032
 Conc: 39.02 ug/ml



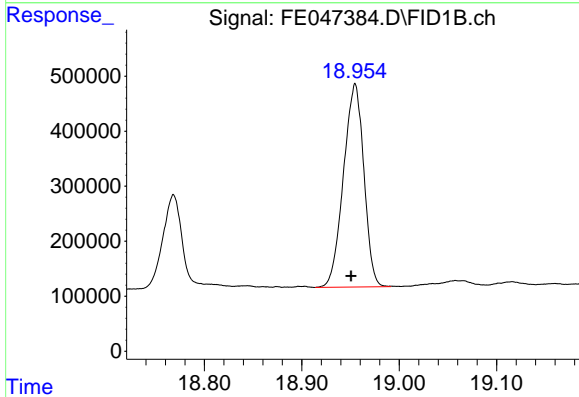
#17 n-Tricontane (C30)

R.T.: 18.124 min
 Delta R.T.: 0.004 min
 Response: 5449946
 Conc: 39.25 ug/ml

Instrument : FID_E
 ClientSampleId : SS-1MS

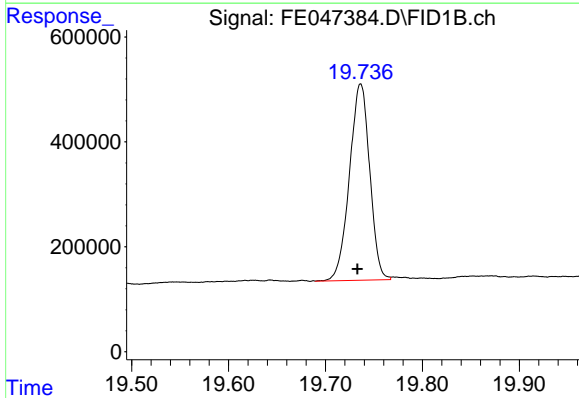
Manual Integrations
 APPROVED

Reviewed By :Yogesh Patel 03/29/2024
 Supervised By :Ankita Jodhani 03/29/2024



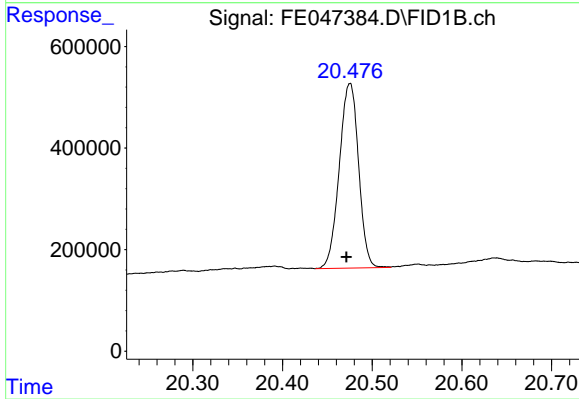
#18 n-Dotriacontane (C32)

R.T.: 18.954 min
 Delta R.T.: 0.004 min
 Response: 5370558
 Conc: 38.93 ug/ml m



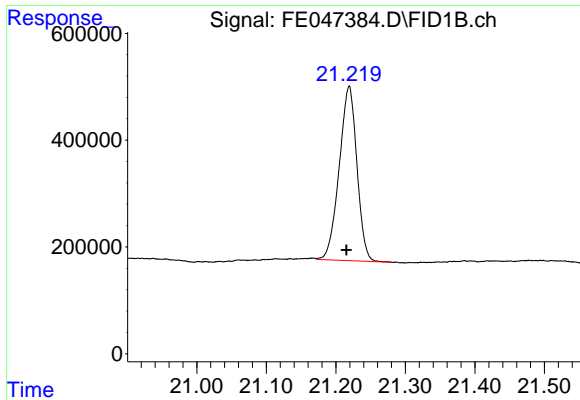
#19 n-Tetratriacontane (C34)

R.T.: 19.736 min
 Delta R.T.: 0.003 min
 Response: 5431625
 Conc: 39.63 ug/ml m



#20 n-Hexatriacontane (C36)

R.T.: 20.475 min
 Delta R.T.: 0.004 min
 Response: 5427428
 Conc: 39.74 ug/ml



#21 n-Octatriacontane (C38)

R.T.: 21.219 min
Delta R.T.: 0.004 min
Response: 5768177
Conc: 41.61 ug/ml

Instrument :

FID_E

ClientSampleId :

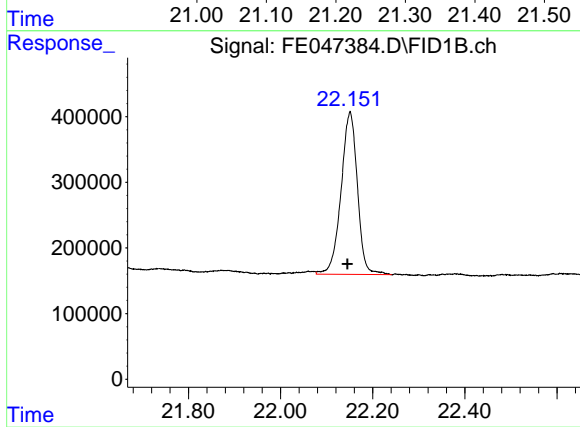
SS-1MS

Manual Integrations

APPROVED

Reviewed By :Yogesh Patel 03/29/2024

Supervised By :Ankita Jodhani 03/29/2024



#22 n-Tetracontane (C40)

R.T.: 22.151 min
Delta R.T.: 0.006 min
Response: 6104035
Conc: 42.61 ug/ml