

Data Path : Z:\pestpcbsrv\HPCHEM1\FID_E\Data\FE040125AL\
 Data File : FE053114.D
 Signal(s) : FID1B.ch
 Acq On : 02 Apr 2025 02:29
 Operator : YP\AJ
 Sample : Q1692-01
 Misc :
 ALS Vial : 29 Sample Multiplier: 1

Instrument :
 FID_E
 ClientSampleId :
 NB-08-04012025

Integration File: autoint1.e
 Quant Time: Apr 02 04:52:38 2025
 Quant Method : Z:\pestpcbsrv\HPCHEM1\FID_E\methods\Aliphatic EPH 032925.M
 Quant Title : GC Extractables
 QLast Update : Mon Mar 31 02:44:53 2025
 Response via : Initial Calibration
 Integrator: ChemStation

Volume Inj. : 1 ul
 Signal Phase : Rxi-1ms
 Signal Info : 20M x 0.18mm x 0.18um

Compound	R.T.	Response	Conc Units

System Monitoring Compounds			
9) S ortho-Terphenyl (SURR)	11.893	6048254	37.132 ug/ml
Spiked Amount	50.000	Recovery	= 74.26%
12) S 1-chlorooctadecane (S...	13.337	4481371	37.331 ug/ml
Spiked Amount	50.000	Recovery	= 74.66%
Target Compounds			
8) T n-Octadecane (C18)	11.575	88299	0.582 ug/ml
10) T n-Eicosane (C20)	12.889	127838	0.897 ug/ml
14) T n-Tetracosane (C24)	15.174	153120	1.134 ug/ml
15) T n-Hexacosane (C26)	16.222	26682	0.200 ug/ml
16) T n-Octacosane (C28)	17.190	253207	1.919 ug/ml
17) T n-Tricontane (C30)	18.061	173451	1.280 ug/ml
18) T n-Dotriacontane (C32)	18.896	170024	1.264 ug/ml
19) T n-Tetratriacontane (C34)	19.707	429087	3.316 ug/ml
20) T n-Hexatriacontane (C36)	20.491f	119126	1.003 ug/ml

(f)=RT Delta > 1/2 Window

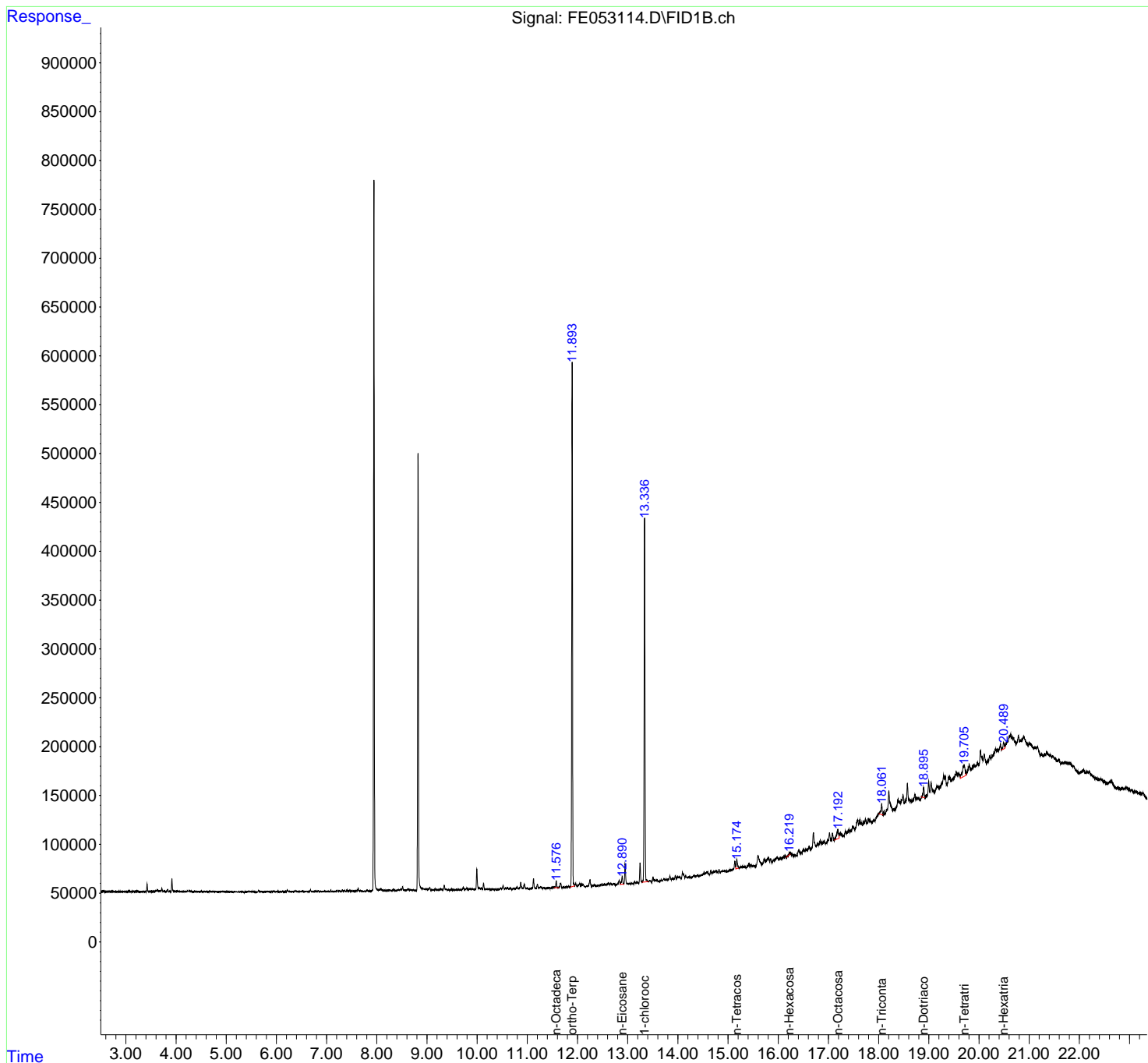
(m)=manual int.

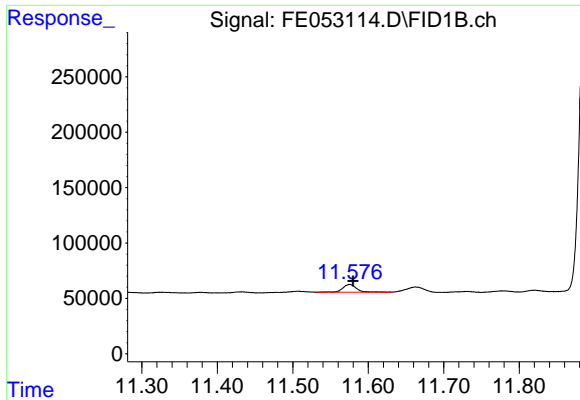
Data Path : Z:\pestpcbsrv\HPCHEM1\FID_E\Data\FE040125AL\
 Data File : FE053114.D
 Signal(s) : FID1B.ch
 Acq On : 02 Apr 2025 02:29
 Operator : YP\AJ
 Sample : Q1692-01
 Misc :
 ALS Vial : 29 Sample Multiplier: 1

Instrument :
 FID_E
 ClientSampleId :
 NB-08-04012025

Integration File: autoint1.e
 Quant Time: Apr 02 04:52:38 2025
 Quant Method : Z:\pestpcbsrv\HPCHEM1\FID_E\methods\Aliphatic EPH 032925.M
 Quant Title : GC Extractables
 QLast Update : Mon Mar 31 02:44:53 2025
 Response via : Initial Calibration
 Integrator: ChemStation

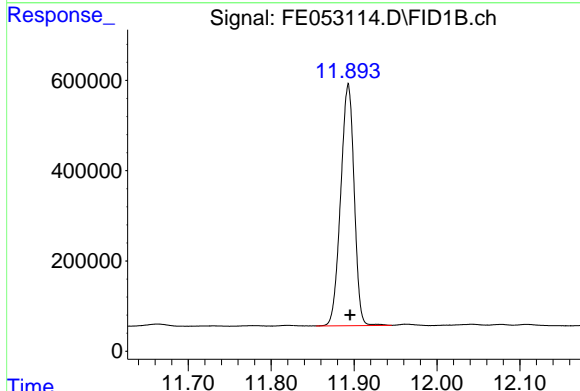
Volume Inj. : 1 ul
 Signal Phase : Rxi-1ms
 Signal Info : 20M x 0.18mm x 0.18um



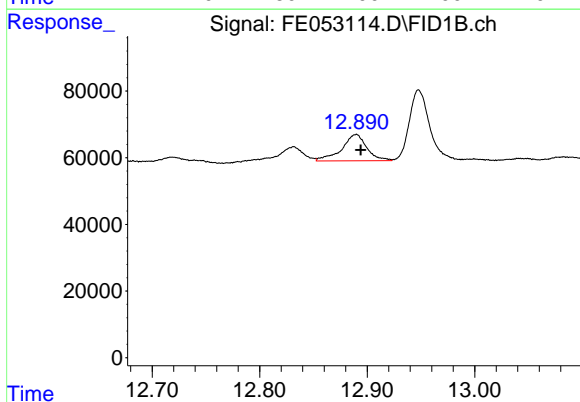


#8 n-Octadecane (C18)
 R.T.: 11.575 min
 Delta R.T.: -0.005 min
 Response: 88299
 Conc: 0.58 ug/ml

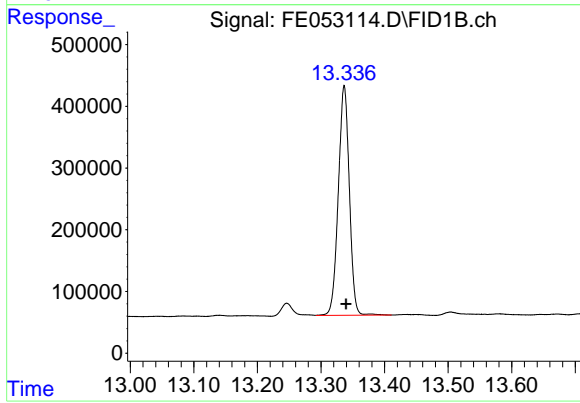
Instrument :
 FID_E
 ClientSampleId :
 NB-08-04012025



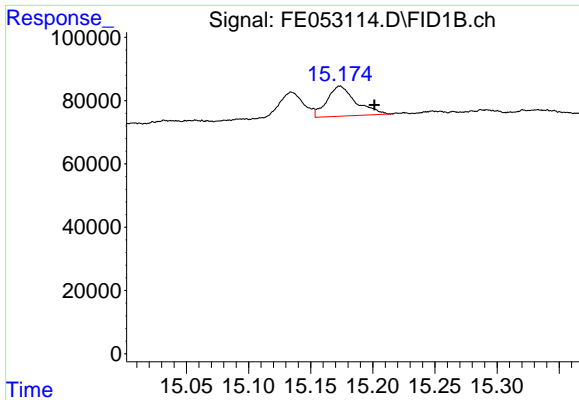
#9 ortho-Terphenyl (SURR)
 R.T.: 11.893 min
 Delta R.T.: -0.002 min
 Response: 6048254
 Conc: 37.13 ug/ml



#10 n-Eicosane (C20)
 R.T.: 12.889 min
 Delta R.T.: -0.005 min
 Response: 127838
 Conc: 0.90 ug/ml



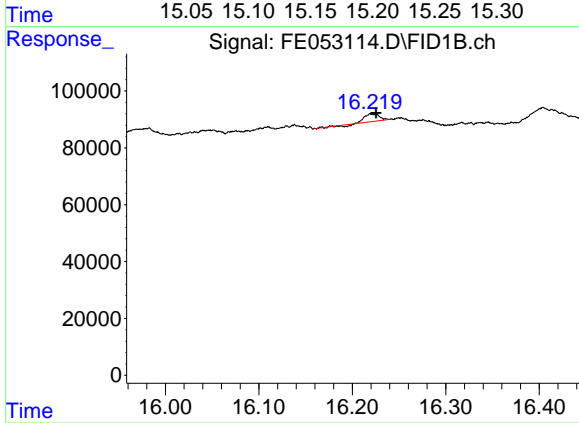
#12 1-chlorooctadecane (SURR)
 R.T.: 13.337 min
 Delta R.T.: -0.003 min
 Response: 4481371
 Conc: 37.33 ug/ml



#14 n-Tetracosane (C24)

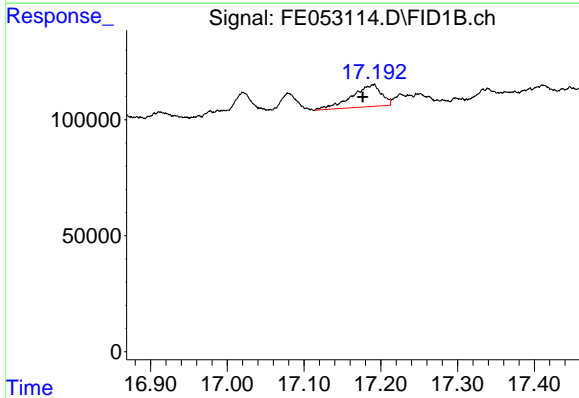
R.T.: 15.174 min
 Delta R.T.: -0.028 min
 Response: 153120
 Conc: 1.13 ug/ml

Instrument :
 FID_E
 ClientSampleId :
 NB-08-04012025



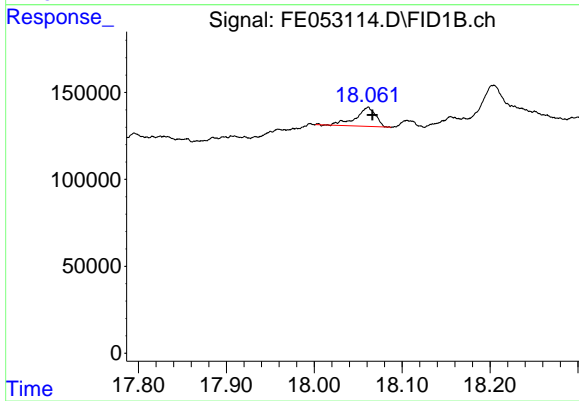
#15 n-Hexacosane (C26)

R.T.: 16.222 min
 Delta R.T.: -0.003 min
 Response: 26682
 Conc: 0.20 ug/ml



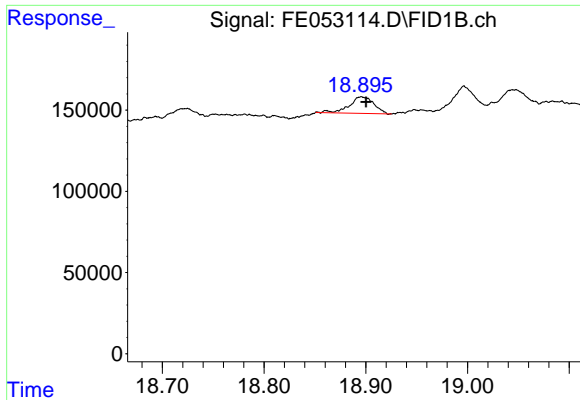
#16 n-Octacosane (C28)

R.T.: 17.190 min
 Delta R.T.: 0.013 min
 Response: 253207
 Conc: 1.92 ug/ml



#17 n-Tricontane (C30)

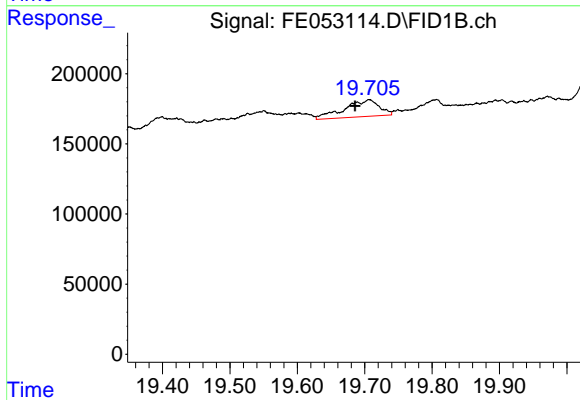
R.T.: 18.061 min
 Delta R.T.: -0.005 min
 Response: 173451
 Conc: 1.28 ug/ml



#18 n-Dotriacontane (C32)

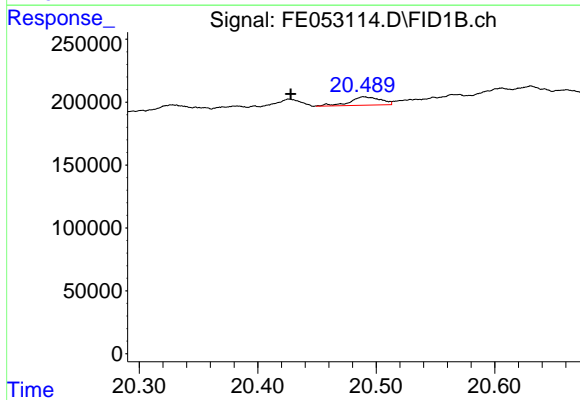
R.T.: 18.896 min
 Delta R.T.: -0.004 min
 Response: 170024
 Conc: 1.26 ug/ml

Instrument :
 FID_E
 ClientSampleId :
 NB-08-04012025



#19 n-Tetraatriacontane (C34)

R.T.: 19.707 min
 Delta R.T.: 0.021 min
 Response: 429087
 Conc: 3.32 ug/ml



#20 n-Hexatriacontane (C36)

R.T.: 20.491 min
 Delta R.T.: 0.063 min
 Response: 119126
 Conc: 1.00 ug/ml