

Data Path : Z:\pestpcbsrv\HPCHEM1\FID\_E\Data\FE040224AL\  
 Data File : FE047419.D  
 Signal(s) : FID1B.ch  
 Acq On : 02 Apr 2024 00:17  
 Operator : YP\AJ  
 Sample : 100 PPM ALIPHATIC HC STD1  
 Misc :  
 ALS Vial : 21 Sample Multiplier: 1

Instrument :  
 FID\_E  
 ClientSampleId :

Integration File: autoint1.e  
 Quant Time: Apr 02 05:10:52 2024  
 Quant Method : Z:\pestpcbsrv\HPCHEM1\FID\_E\methods\Aliphatic EPH 040224.M  
 Quant Title : GC Extractables  
 QLast Update : Tue Apr 02 05:10:14 2024  
 Response via : Initial Calibration  
 Integrator: ChemStation

Volume Inj. : 1 ul  
 Signal Phase : Rxi-1ms  
 Signal Info : 20M x 0.18mm x 0.18um

Compound	R.T.	Response	Conc Units
-----			
System Monitoring Compounds			
9) S ortho-Terphenyl (SURR)	11.994	18397934	100.000 ug/ml
Spiked Amount	50.000	Recovery	= 200.00%
12) S 1-chlorooctadecane (S...	13.425	14357055	100.000 ug/ml
Spiked Amount	50.000	Recovery	= 200.00%
Target Compounds			
1) T n-Nonane (C9)	3.369	16213160	100.000 ug/ml
2) T n-Decane (C10)	4.623	16862101	100.000 ug/ml
3) T A~Naphthalene (C11.7)	6.331	17965964	100.000 ug/ml
4) T n-Dodecane (C12)	6.790	17263822	100.000 ug/ml
5) T A~2-methylnaphthalene...	7.430	17551050	100.000 ug/ml
6) T n-Tetradecane (C14)	8.619	17112686	100.000 ug/ml
7) T n-Hexadecane (C16)	10.227	17631880	100.000 ug/ml
8) T n-Octadecane (C18)	11.672	17823707	100.000 ug/ml
10) T n-Eicosane (C20)	12.980	17297081	100.000 ug/ml
11) T n-Heneicosane (C21)	13.592	16868963	100.000 ug/ml
13) T n-Docosane (C22)	14.178	17258086	100.000 ug/ml
14) T n-Tetracosane (C24)	15.280	18032403	100.000 ug/ml
15) T n-Hexacosane (C26)	16.300	18432979	100.000 ug/ml
16) T n-Octacosane (C28)	17.248	18518083	100.000 ug/ml
17) T n-Tricontane (C30)	18.134	18754850	100.000 ug/ml
18) T n-Dotriacontane (C32)	18.965	18161800	100.000 ug/ml
19) T n-Tetratriacontane (C34)	19.748	17245227	100.000 ug/ml
20) T n-Hexatriacontane (C36)	20.485	17006050	100.000 ug/ml
21) T n-Octatriacontane (C38)	21.231	17196382	99.259 ug/ml
22) T n-Tetracontane (C40)	22.165	17311487	100.000 ug/ml

(f)=RT Delta > 1/2 Window

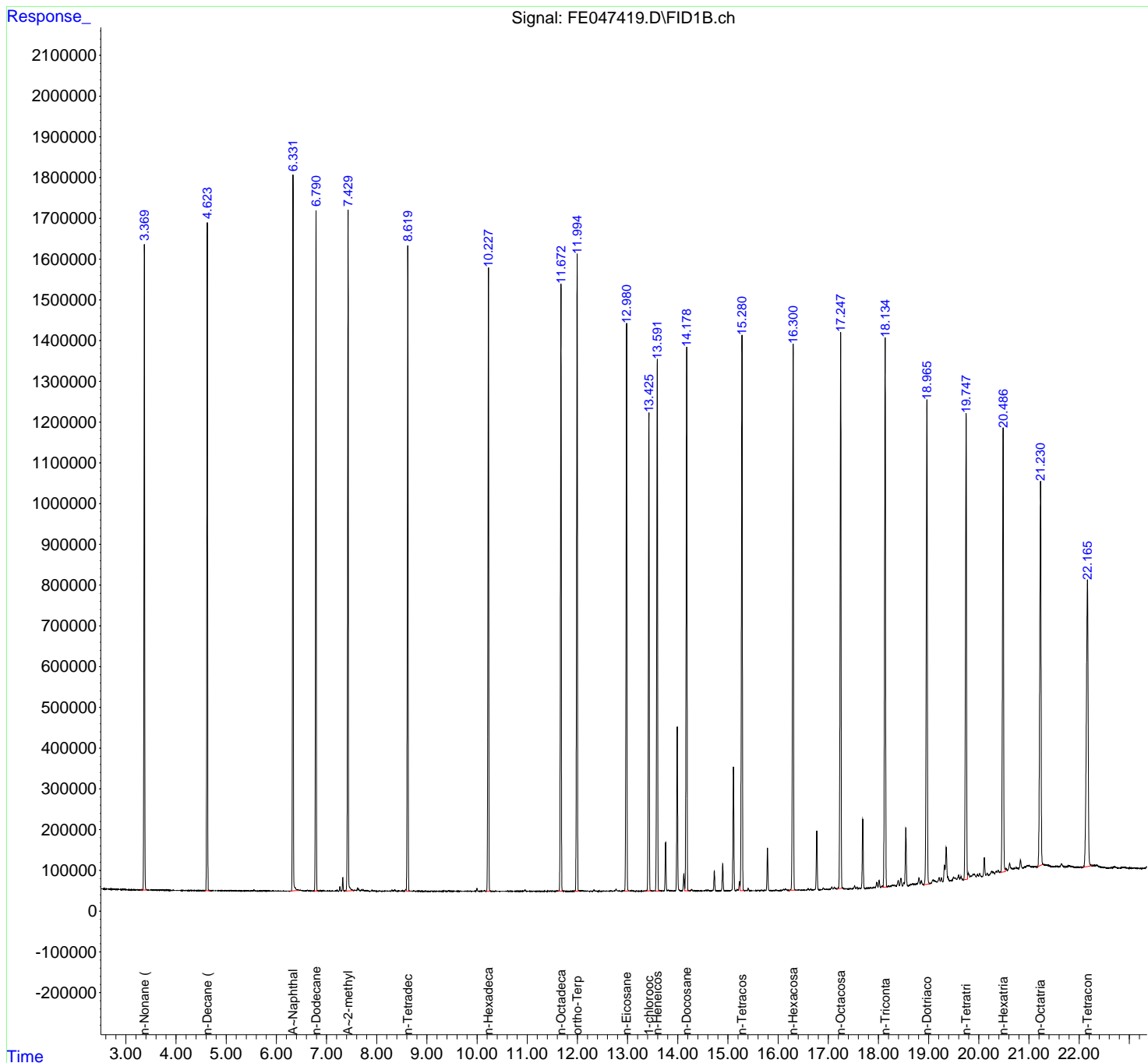
(m)=manual int.

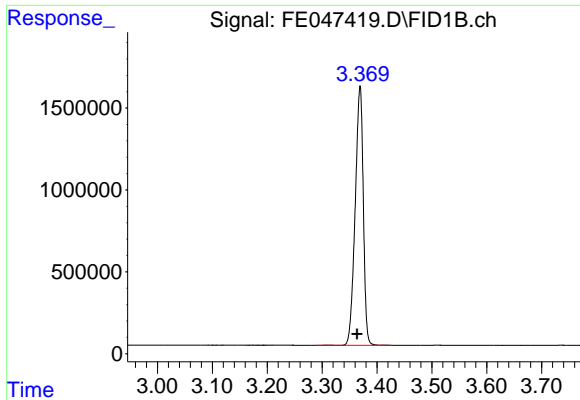
Data Path : Z:\pestpcbsrv\HPCHEM1\FID\_E\Data\FE040224AL\  
 Data File : FE047419.D  
 Signal(s) : FID1B.ch  
 Acq On : 02 Apr 2024 00:17  
 Operator : YP\AJ  
 Sample : 100 PPM ALIPHATIC HC STD1  
 Misc :  
 ALS Vial : 21 Sample Multiplier: 1

Instrument :  
 FID\_E  
 ClientSampleId :

Integration File: autoint1.e  
 Quant Time: Apr 02 05:10:52 2024  
 Quant Method : Z:\pestpcbsrv\HPCHEM1\FID\_E\methods\Aliphatic EPH 040224.M  
 Quant Title : GC Extractables  
 QLast Update : Tue Apr 02 05:10:14 2024  
 Response via : Initial Calibration  
 Integrator: ChemStation

Volume Inj. : 1 ul  
 Signal Phase : Rxi-1ms  
 Signal Info : 20M x 0.18mm x 0.18um

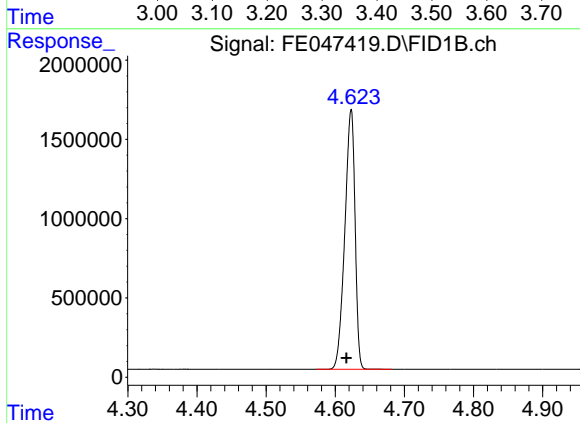




#1 n-Nonane (C9)

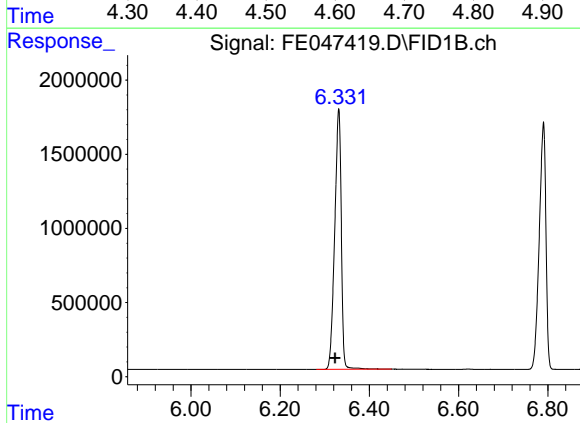
R.T.: 3.369 min  
 Delta R.T.: 0.005 min  
 Response: 16213160  
 Conc: 100.00 ug/ml

Instrument :  
 FID\_E  
 ClientSampleId :



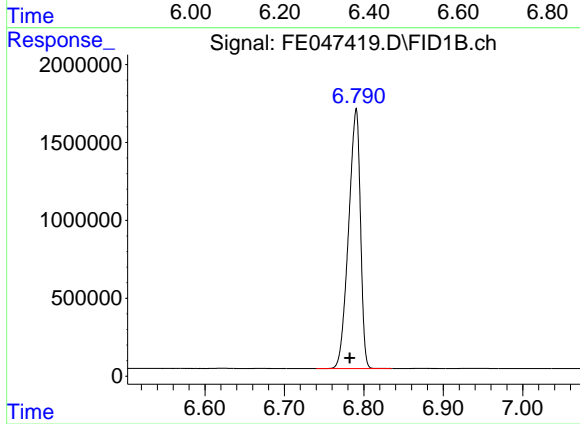
#2 n-Decane (C10)

R.T.: 4.623 min  
 Delta R.T.: 0.007 min  
 Response: 16862101  
 Conc: 100.00 ug/ml



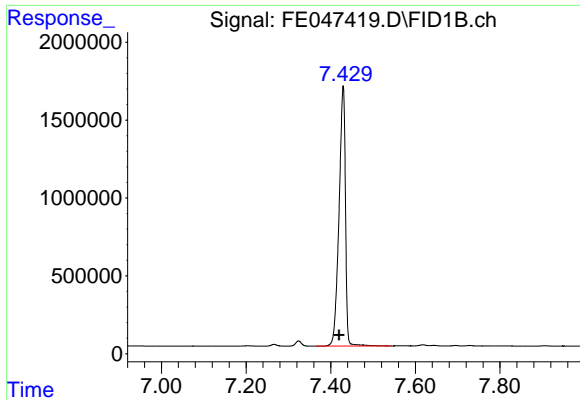
#3 A~Naphthalene (C11.7)

R.T.: 6.331 min  
 Delta R.T.: 0.008 min  
 Response: 17965964  
 Conc: 100.00 ug/ml



#4 n-Dodecane (C12)

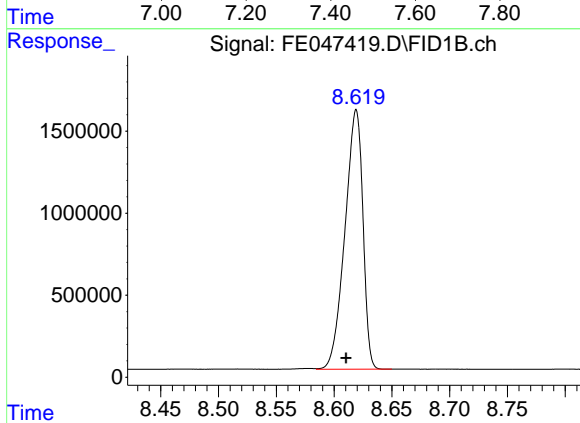
R.T.: 6.790 min  
 Delta R.T.: 0.008 min  
 Response: 17263822  
 Conc: 100.00 ug/ml



#5 A~2-methylnaphthalene (C12.89)

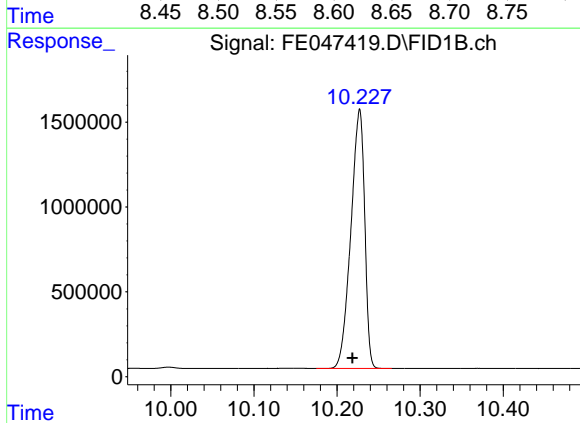
R.T.: 7.430 min  
Delta R.T.: 0.010 min  
Response: 17551050  
Conc: 100.00 ug/ml

Instrument :  
FID\_E  
ClientSampleId :



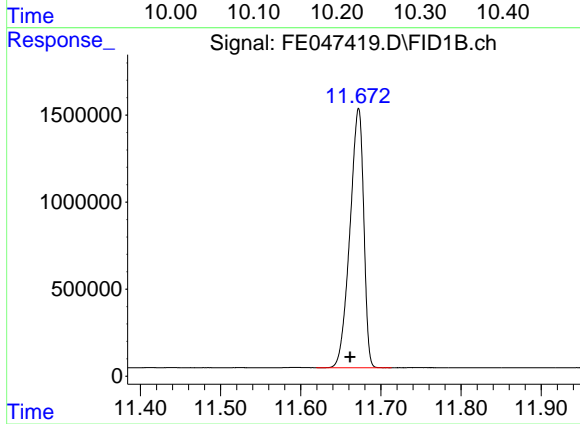
#6 n-Tetradecane (C14)

R.T.: 8.619 min  
Delta R.T.: 0.009 min  
Response: 17112686  
Conc: 100.00 ug/ml



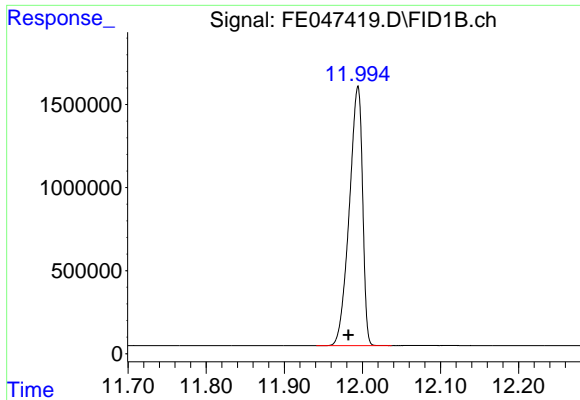
#7 n-Hexadecane (C16)

R.T.: 10.227 min  
Delta R.T.: 0.009 min  
Response: 17631880  
Conc: 100.00 ug/ml



#8 n-Octadecane (C18)

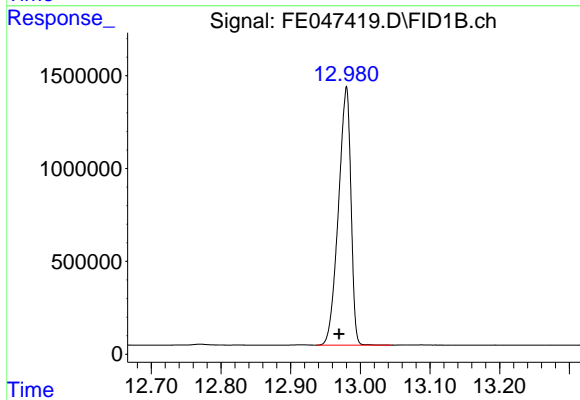
R.T.: 11.672 min  
Delta R.T.: 0.011 min  
Response: 17823707  
Conc: 100.00 ug/ml



#9 ortho-Terphenyl (SURR)

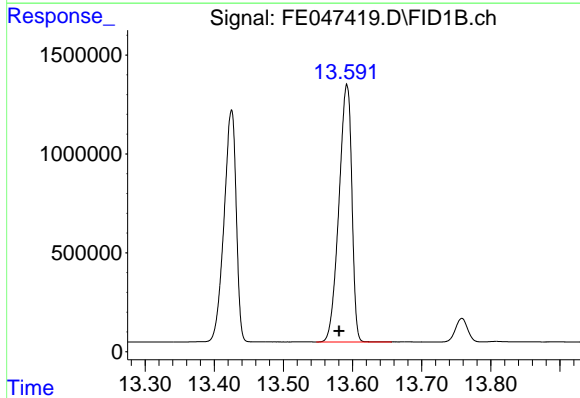
R.T.: 11.994 min  
 Delta R.T.: 0.012 min  
 Response: 18397934  
 Conc: 100.00 ug/ml

Instrument :  
 FID\_E  
 ClientSampleId :



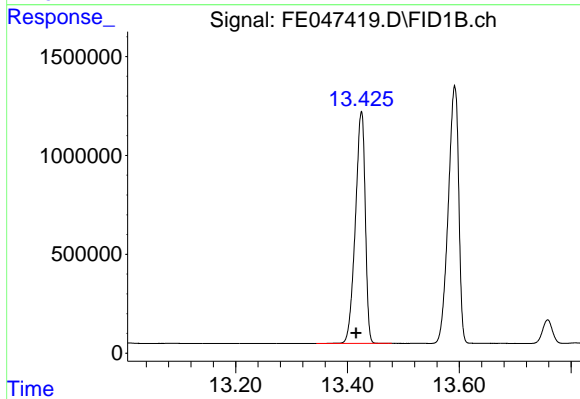
#10 n-Eicosane (C20)

R.T.: 12.980 min  
 Delta R.T.: 0.011 min  
 Response: 17297081  
 Conc: 100.00 ug/ml



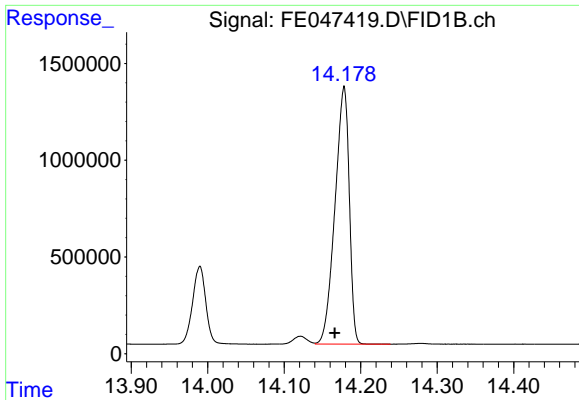
#11 n-Heneicosane (C21)

R.T.: 13.592 min  
 Delta R.T.: 0.011 min  
 Response: 16868963  
 Conc: 100.00 ug/ml



#12 1-chlorooctadecane (SURR)

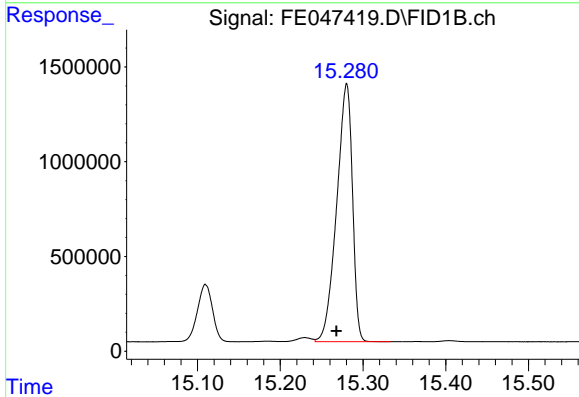
R.T.: 13.425 min  
 Delta R.T.: 0.010 min  
 Response: 14357055  
 Conc: 100.00 ug/ml



#13 n-Docosane (C22)

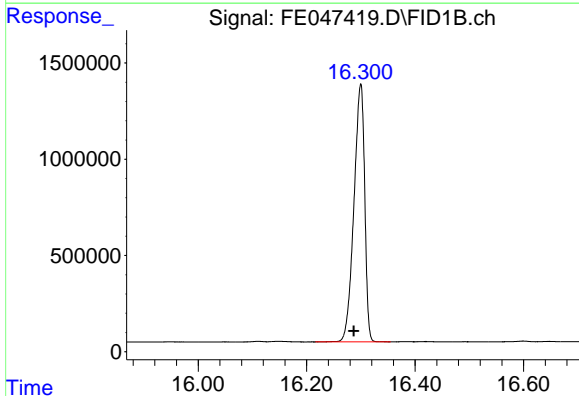
R.T.: 14.178 min  
Delta R.T.: 0.012 min  
Response: 17258086  
Conc: 100.00 ug/ml

Instrument :  
FID\_E  
ClientSampleId :



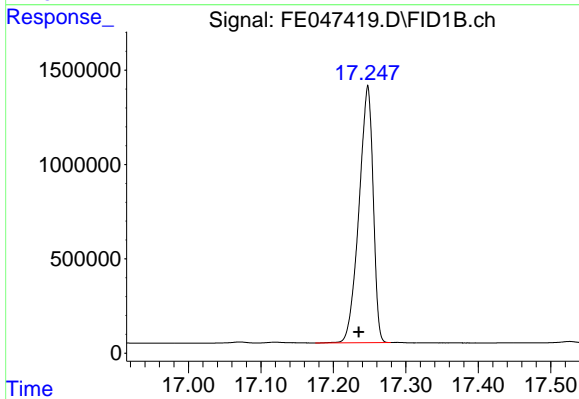
#14 n-Tetracosane (C24)

R.T.: 15.280 min  
Delta R.T.: 0.013 min  
Response: 18032403  
Conc: 100.00 ug/ml



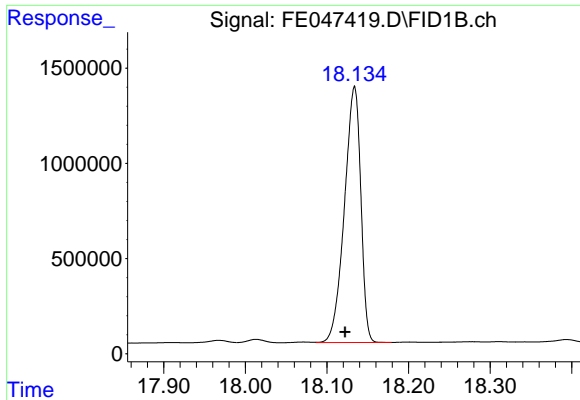
#15 n-Hexacosane (C26)

R.T.: 16.300 min  
Delta R.T.: 0.013 min  
Response: 18432979  
Conc: 100.00 ug/ml



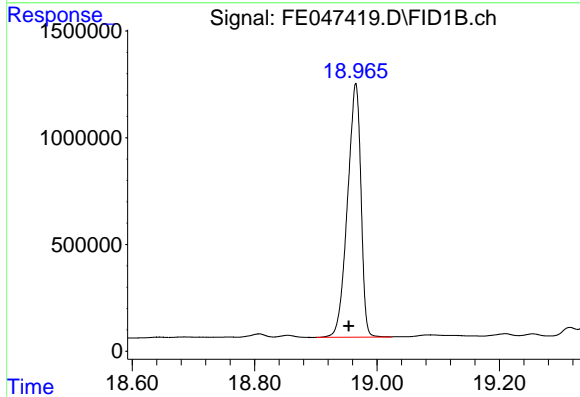
#16 n-Octacosane (C28)

R.T.: 17.248 min  
Delta R.T.: 0.012 min  
Response: 18518083  
Conc: 100.00 ug/ml

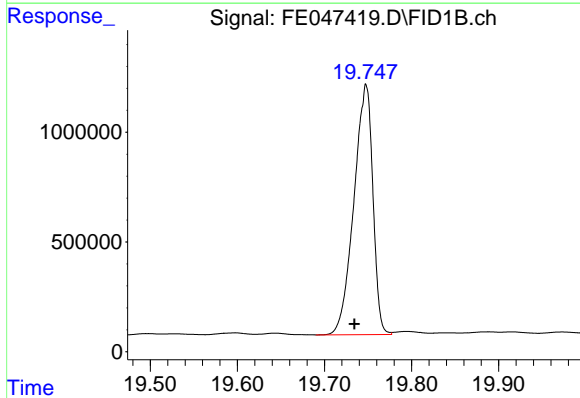


#17 n-Tricontane (C30)  
R.T.: 18.134 min  
Delta R.T.: 0.012 min  
Response: 18754850  
Conc: 100.00 ug/ml

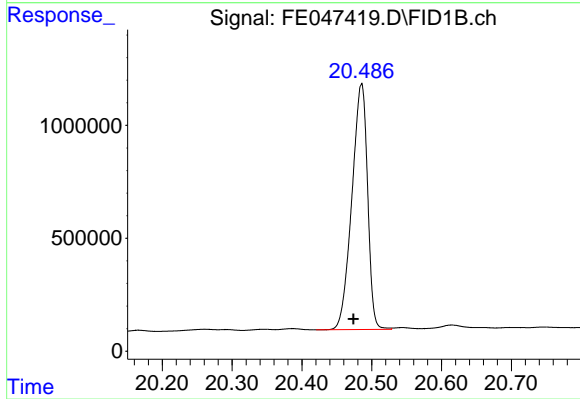
Instrument :  
FID\_E  
ClientSampleId :



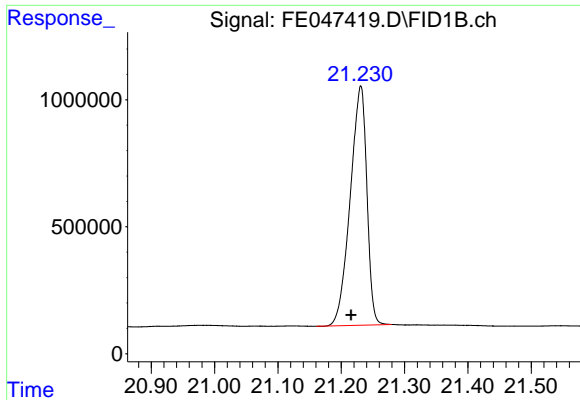
#18 n-Dotriacontane (C32)  
R.T.: 18.965 min  
Delta R.T.: 0.012 min  
Response: 18161800  
Conc: 100.00 ug/ml



#19 n-Tetratriacontane (C34)  
R.T.: 19.748 min  
Delta R.T.: 0.014 min  
Response: 17245227  
Conc: 100.00 ug/ml



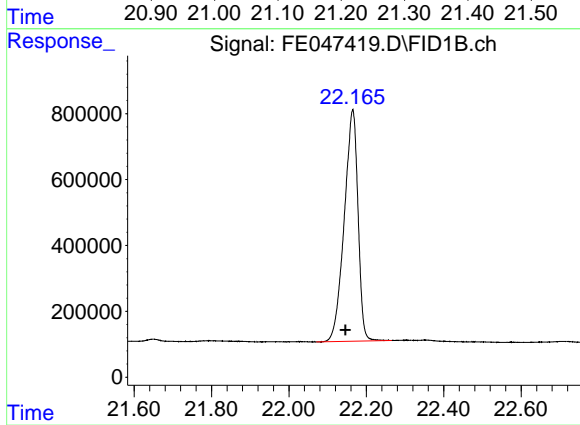
#20 n-Hexatriacontane (C36)  
R.T.: 20.485 min  
Delta R.T.: 0.011 min  
Response: 17006050  
Conc: 100.00 ug/ml



#21 n-Octatriacontane (C38)

R.T.: 21.231 min  
Delta R.T.: 0.015 min  
Response: 17196382  
Conc: 99.26 ug/ml

Instrument :  
FID\_E  
ClientSampleId :



#22 n-Tetracontane (C40)

R.T.: 22.165 min  
Delta R.T.: 0.019 min  
Response: 17311487  
Conc: 100.00 ug/ml