

Data Path : Z:\pestpcbsrv\HPCHEM1\FID_E\Data\FE040224AL\
 Data File : FE047428.D
 Signal(s) : FID1B.ch
 Acq On : 02 Apr 2024 08:31
 Operator : YP\AJ
 Sample : P1927-03DL 2X
 Misc :
 ALS Vial : 7 Sample Multiplier: 1

Instrument :
 FID_E
 ClientSampleId :

Integration File: autoint1.e
 Quant Time: Apr 02 13:54:27 2024
 Quant Method : Z:\pestpcbsrv\HPCHEM1\FID_E\methods\Aliphatic EPH 040224.M
 Quant Title : GC Extractables
 QLast Update : Tue Apr 02 05:28:28 2024
 Response via : Initial Calibration
 Integrator: ChemStation

Volume Inj. : 1 ul
 Signal Phase : Rxi-1ms
 Signal Info : 20M x 0.18mm x 0.18um

Compound	R.T.	Response	Conc Units

System Monitoring Compounds			
9) S ortho-Terphenyl (SURR)	11.981	3229485	18.620 ug/ml
Spiked Amount	50.000	Recovery	= 37.24%
12) S 1-chlorooctadecane (S...	13.414	2697783	20.058 ug/ml
Spiked Amount	50.000	Recovery	= 40.12%
Target Compounds			
3) T A~Naphthalene (C11.7)	6.390f	50525	0.298 ug/ml
10) T n-Eicosane (C20)	13.032f	82773	0.511 ug/ml
16) T n-Octacosane (C28)	17.282	95457	0.576 ug/ml
18) T n-Dotriacontane (C32)	18.947	51978	0.312 ug/ml
19) T n-Tetratriacontane (C34)	19.798f	52936	0.330 ug/ml

(f)=RT Delta > 1/2 Window

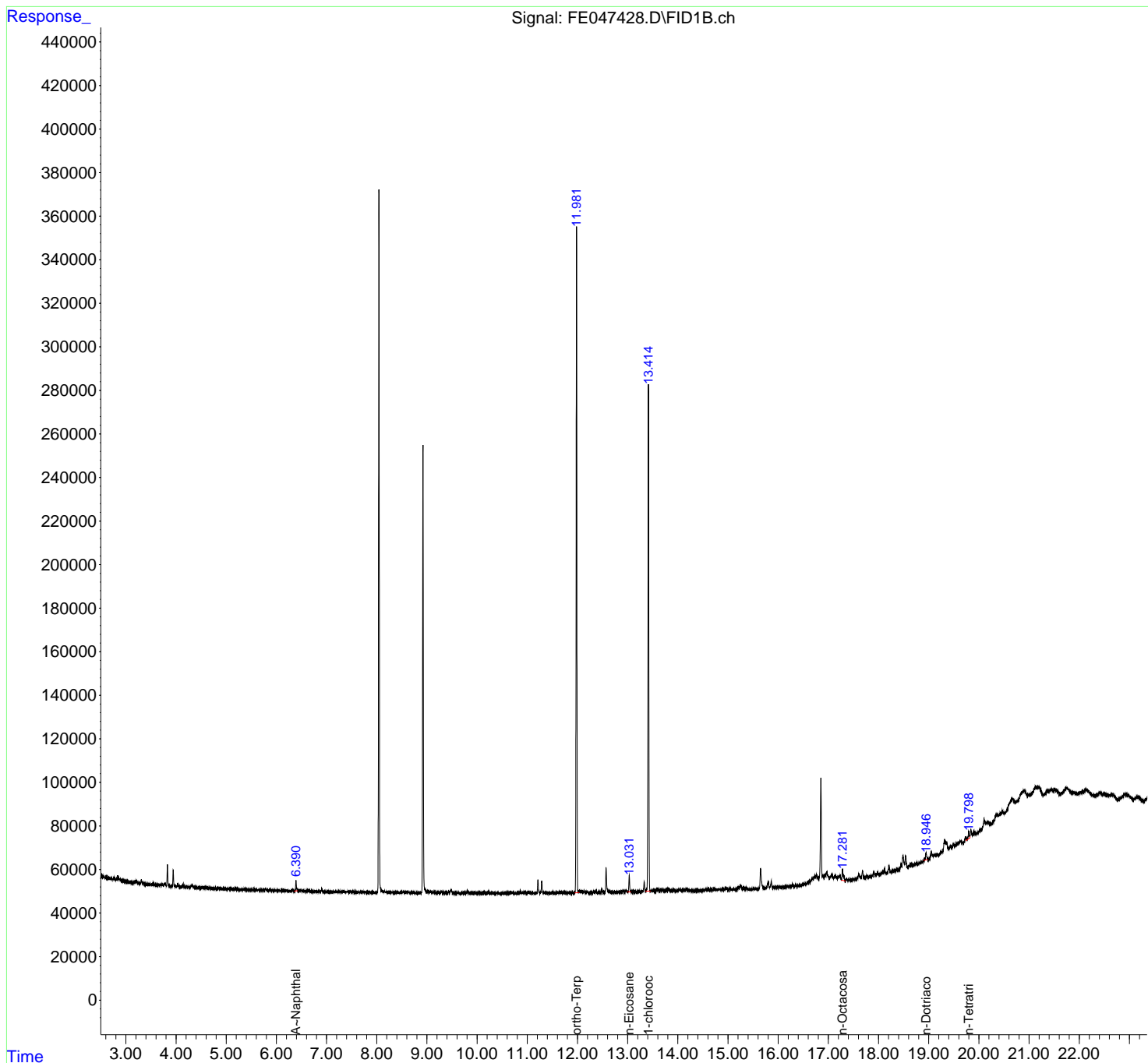
(m)=manual int.

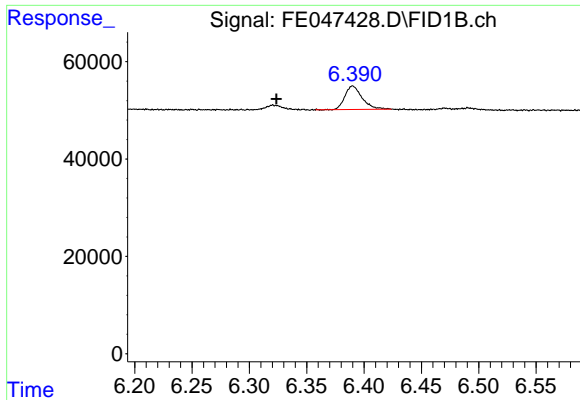
Data Path : Z:\pestpcbsrv\HPCHEM1\FID_E\Data\FE040224AL\
Data File : FE047428.D
Signal(s) : FID1B.ch
Acq On : 02 Apr 2024 08:31
Operator : YP\AJ
Sample : P1927-03DL 2X
Misc :
ALS Vial : 7 Sample Multiplier: 1

Instrument :
FID_E
ClientSampleId :

Integration File: autoint1.e
Quant Time: Apr 02 13:54:27 2024
Quant Method : Z:\pestpcbsrv\HPCHEM1\FID_E\methods\Aliphatic EPH 040224.M
Quant Title : GC Extractables
QLast Update : Tue Apr 02 05:28:28 2024
Response via : Initial Calibration
Integrator: ChemStation

Volume Inj. : 1 ul
Signal Phase : Rxi-1ms
Signal Info : 20M x 0.18mm x 0.18um

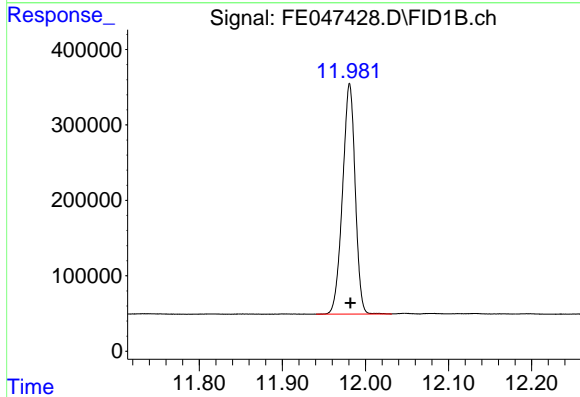




#3 A~Naphthalene (C11.7)

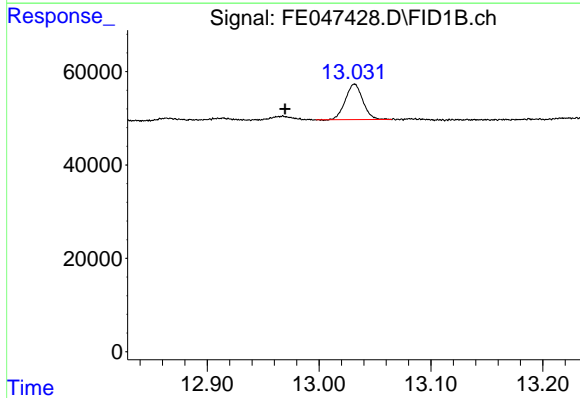
R.T.: 6.390 min
 Delta R.T.: 0.067 min
 Response: 50525
 Conc: 0.30 ug/ml

Instrument :
 FID_E
 ClientSampleId :



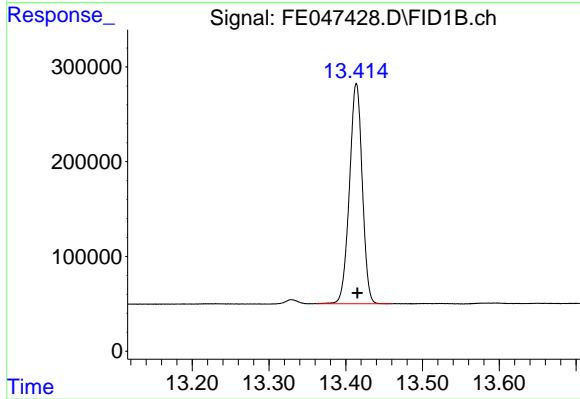
#9 ortho-Terphenyl (SURR)

R.T.: 11.981 min
 Delta R.T.: -0.001 min
 Response: 3229485
 Conc: 18.62 ug/ml



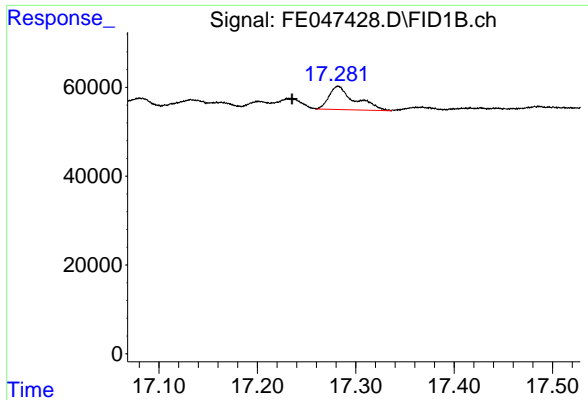
#10 n-Eicosane (C20)

R.T.: 13.032 min
 Delta R.T.: 0.062 min
 Response: 82773
 Conc: 0.51 ug/ml



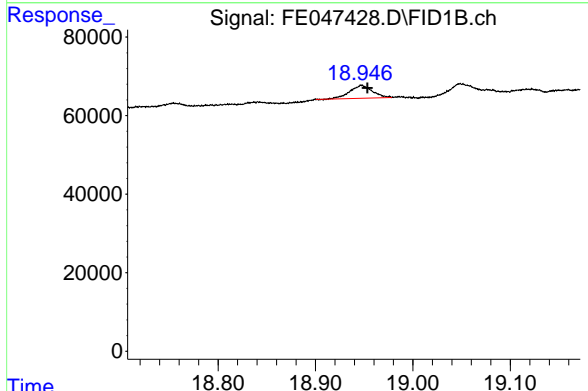
#12 1-chlorooctadecane (SURR)

R.T.: 13.414 min
 Delta R.T.: -0.001 min
 Response: 2697783
 Conc: 20.06 ug/ml

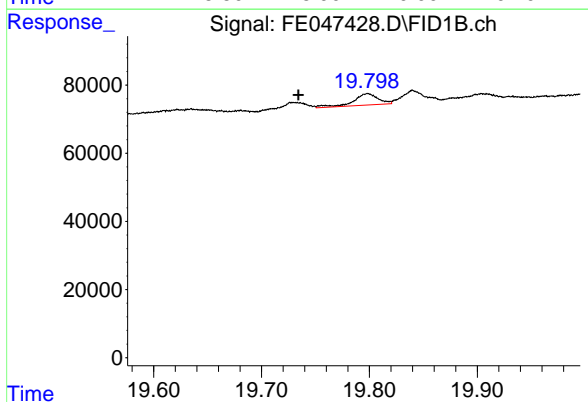


#16 n-Octacosane (C28)
 R.T.: 17.282 min
 Delta R.T.: 0.047 min
 Response: 95457
 Conc: 0.58 ug/ml

Instrument :
 FID_E
 ClientSampleId :



#18 n-Dotriacontane (C32)
 R.T.: 18.947 min
 Delta R.T.: -0.006 min
 Response: 51978
 Conc: 0.31 ug/ml



#19 n-Tetratriacontane (C34)
 R.T.: 19.798 min
 Delta R.T.: 0.064 min
 Response: 52936
 Conc: 0.33 ug/ml