

Data Path : Z:\pestpcbsrv\HPCHEM1\FID_E\Data\FE040325AL\
 Data File : FE053177.D
 Signal(s) : FID1B.ch
 Acq On : 03 Apr 2025 23:27
 Operator : YP\AJ
 Sample : I.BLK
 Misc :
 ALS Vial : 1 Sample Multiplier: 1

Instrument :
 FID_E
 ClientSampleId :

Integration File: autoint1.e
 Quant Time: Apr 04 04:12:58 2025
 Quant Method : Z:\pestpcbsrv\HPCHEM1\FID_E\methods\Aliphatic EPH 032925.M
 Quant Title : GC Extractables
 QLast Update : Mon Mar 31 02:44:53 2025
 Response via : Initial Calibration
 Integrator: ChemStation

Volume Inj. : 1 ul
 Signal Phase : Rxi-1ms
 Signal Info : 20M x 0.18mm x 0.18um

Compound	R.T.	Response	Conc Units

System Monitoring Compounds			
Target Compounds			
17) T n-Tricontane (C30)	18.063	171080	1.262 ug/ml
18) T n-Dotriacontane (C32)	18.897	310417	2.307 ug/ml
19) T n-Tetratriacontane (C34)	19.682	370275	2.862 ug/ml
20) T n-Hexatriacontane (C36)	20.424	275989	2.323 ug/ml
21) T n-Octatriacontane (C38)	21.162	280948	2.444 ug/ml

(f)=RT Delta > 1/2 Window

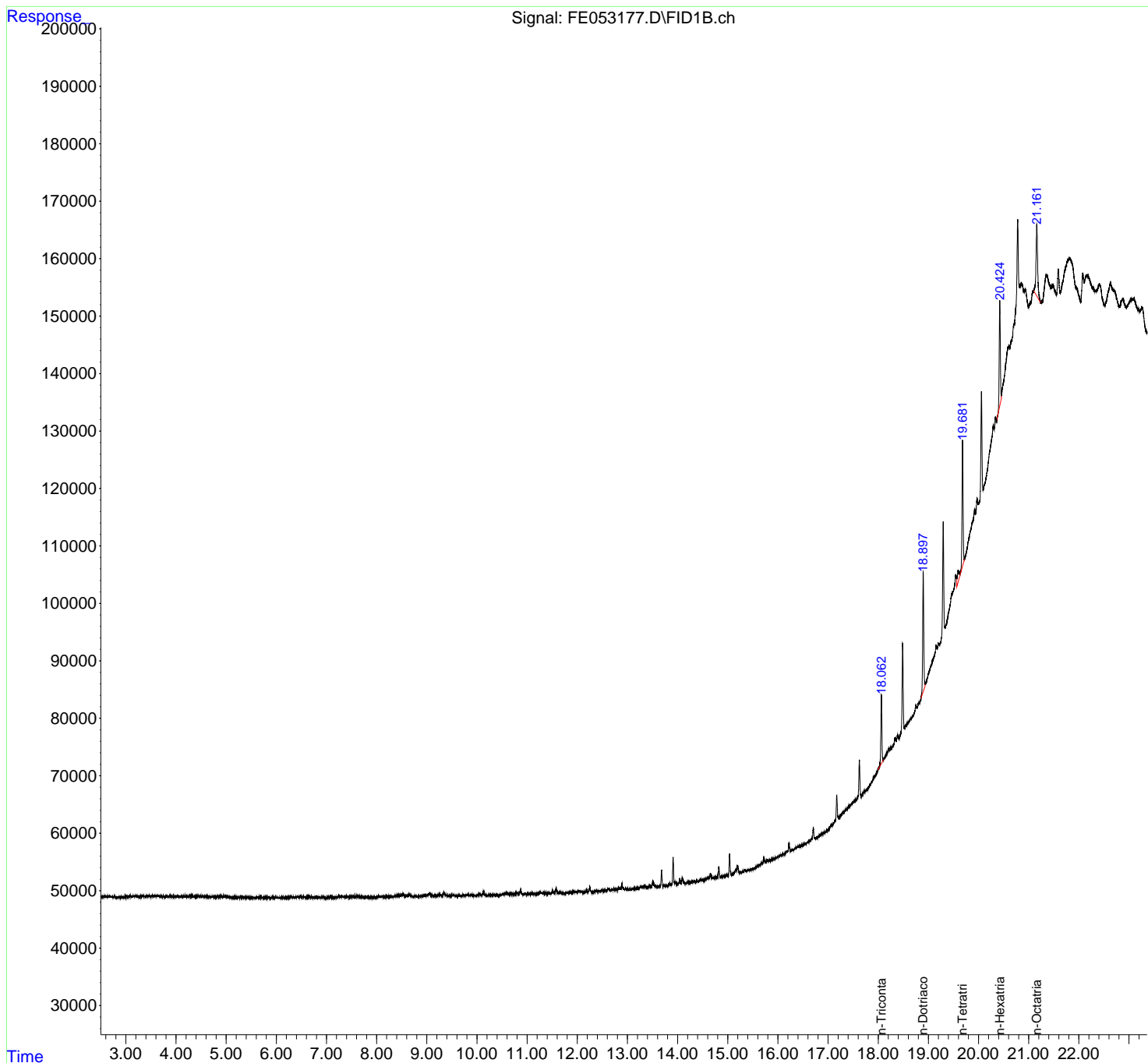
(m)=manual int.

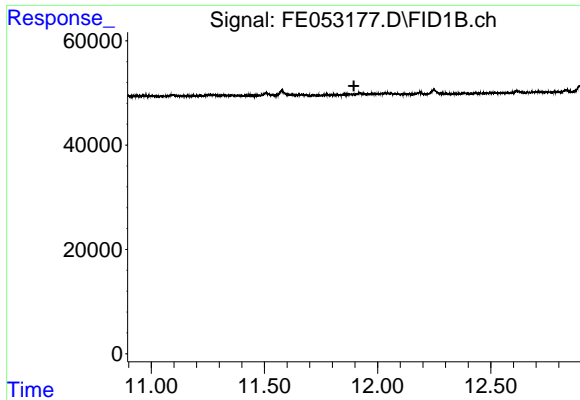
Data Path : Z:\pestpcbsrv\HPCHEM1\FID_E\Data\FE040325AL\
 Data File : FE053177.D
 Signal(s) : FID1B.ch
 Acq On : 03 Apr 2025 23:27
 Operator : YP\AJ
 Sample : I.BLK
 Misc :
 ALS Vial : 1 Sample Multiplier: 1

Instrument :
 FID_E
 ClientSampleId :

Integration File: autoint1.e
 Quant Time: Apr 04 04:12:58 2025
 Quant Method : Z:\pestpcbsrv\HPCHEM1\FID_E\methods\Aliphatic EPH 032925.M
 Quant Title : GC Extractables
 QLast Update : Mon Mar 31 02:44:53 2025
 Response via : Initial Calibration
 Integrator: ChemStation

Volume Inj. : 1 ul
 Signal Phase : Rxi-1ms
 Signal Info : 20M x 0.18mm x 0.18um

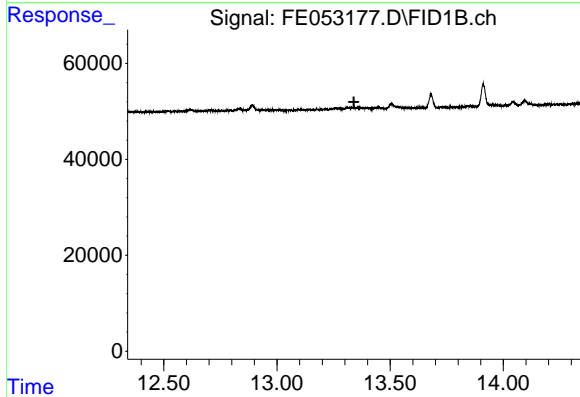




#9 ortho-Terphenyl (SURR)

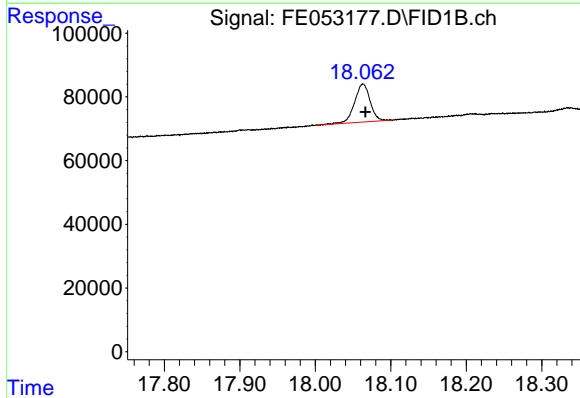
R.T.: 0.000 min
 Exp R.T.: 11.895 min
 Response: 0
 Conc: N.D.

Instrument :
 FID_E
 ClientSampleId :



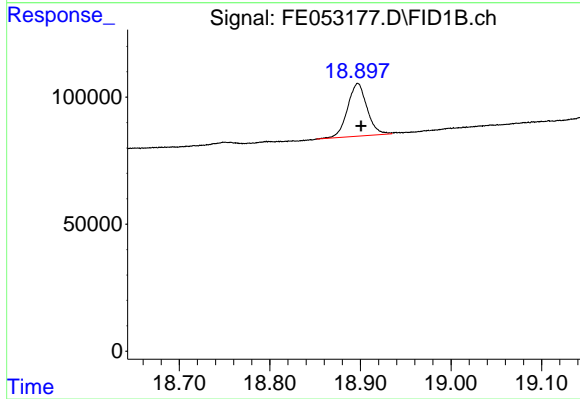
#12 1-chlorooctadecane (SURR)

R.T.: 0.000 min
 Exp R.T.: 13.340 min
 Response: 0
 Conc: N.D.



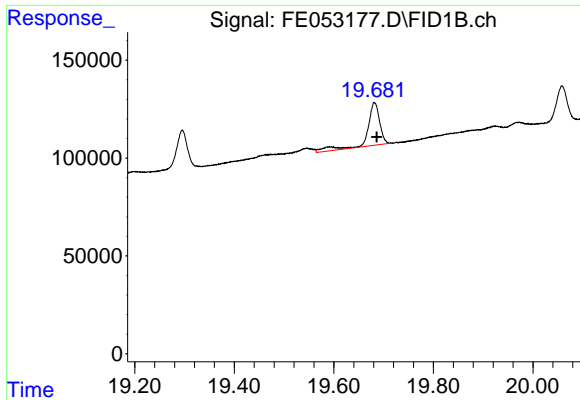
#17 n-Tricontane (C30)

R.T.: 18.063 min
 Delta R.T.: -0.003 min
 Response: 171080
 Conc: 1.26 ug/ml



#18 n-Dotriacontane (C32)

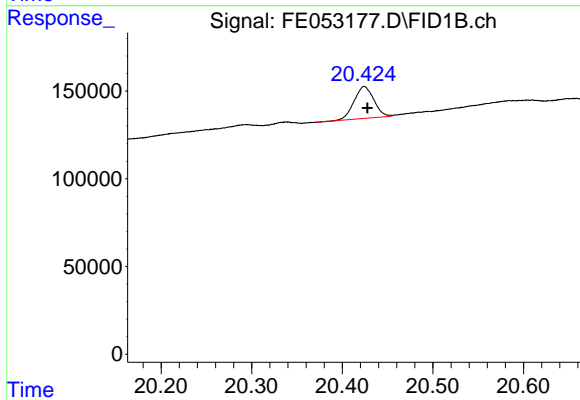
R.T.: 18.897 min
 Delta R.T.: -0.003 min
 Response: 310417
 Conc: 2.31 ug/ml



#19 n-Tetratriacontane (C34)

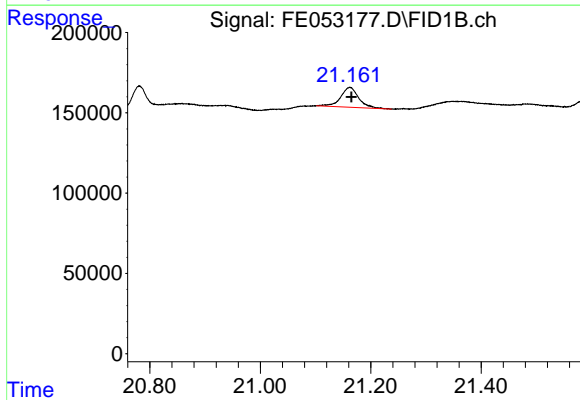
R.T.: 19.682 min
Delta R.T.: -0.004 min
Response: 370275
Conc: 2.86 ug/ml

Instrument :
FID_E
ClientSampleId :



#20 n-Hexatriacontane (C36)

R.T.: 20.424 min
Delta R.T.: -0.003 min
Response: 275989
Conc: 2.32 ug/ml



#21 n-Octatriacontane (C38)

R.T.: 21.162 min
Delta R.T.: -0.003 min
Response: 280948
Conc: 2.44 ug/ml