

Data Path : Z:\pestpcbsrv\HPCHEM1\FID\_E\Data\FE040424AL\  
 Data File : FE047453.D  
 Signal(s) : FID1B.ch  
 Acq On : 04 Apr 2024 07:56  
 Operator : YP\AJ  
 Sample : P1954-03DL 10X  
 Misc :  
 ALS Vial : 6 Sample Multiplier: 1

**Instrument :**  
 FID\_E  
**ClientSampleId :**  
 RBR21145DL

**Manual Integrations**  
**APPROVED**  
 Reviewed By :Yogesh Patel 04/05/2024  
 Supervised By :Ankita Jodhani 04/05/2024

Integration File: autoint1.e  
 Quant Time: Apr 05 01:23:23 2024  
 Quant Method : Z:\pestpcbsrv\HPCHEM1\FID\_E\methods\Aliphatic EPH 040224.M  
 Quant Title : GC Extractables  
 QLast Update : Tue Apr 02 05:28:28 2024  
 Response via : Initial Calibration  
 Integrator: ChemStation

Volume Inj. : 1 ul  
 Signal Phase : Rxi-1ms  
 Signal Info : 20M x 0.18mm x 0.18um

Compound	R.T.	Response	Conc Units
-----			
System Monitoring Compounds			
9) S ortho-Terphenyl (SURR)	11.980	654069	3.771 ug/mlm
Spiked Amount	50.000	Recovery =	7.54%
12) S 1-chlorooctadecane (S...	13.415	416197	3.094 ug/ml
Spiked Amount	50.000	Recovery =	6.19%

Target Compounds

(f)=RT Delta > 1/2 Window

(m)=manual int.

Data Path : Z:\pestpcbsrv\HPCHEM1\FID\_E\Data\FE040424AL\  
 Data File : FE047453.D  
 Signal(s) : FID1B.ch  
 Acq On : 04 Apr 2024 07:56  
 Operator : YP\AJ  
 Sample : P1954-03DL 10X  
 Misc :  
 ALS Vial : 6 Sample Multiplier: 1

**Instrument :**

FID\_E

**ClientSampleId :**

RBR21145DL

**Manual Integrations**

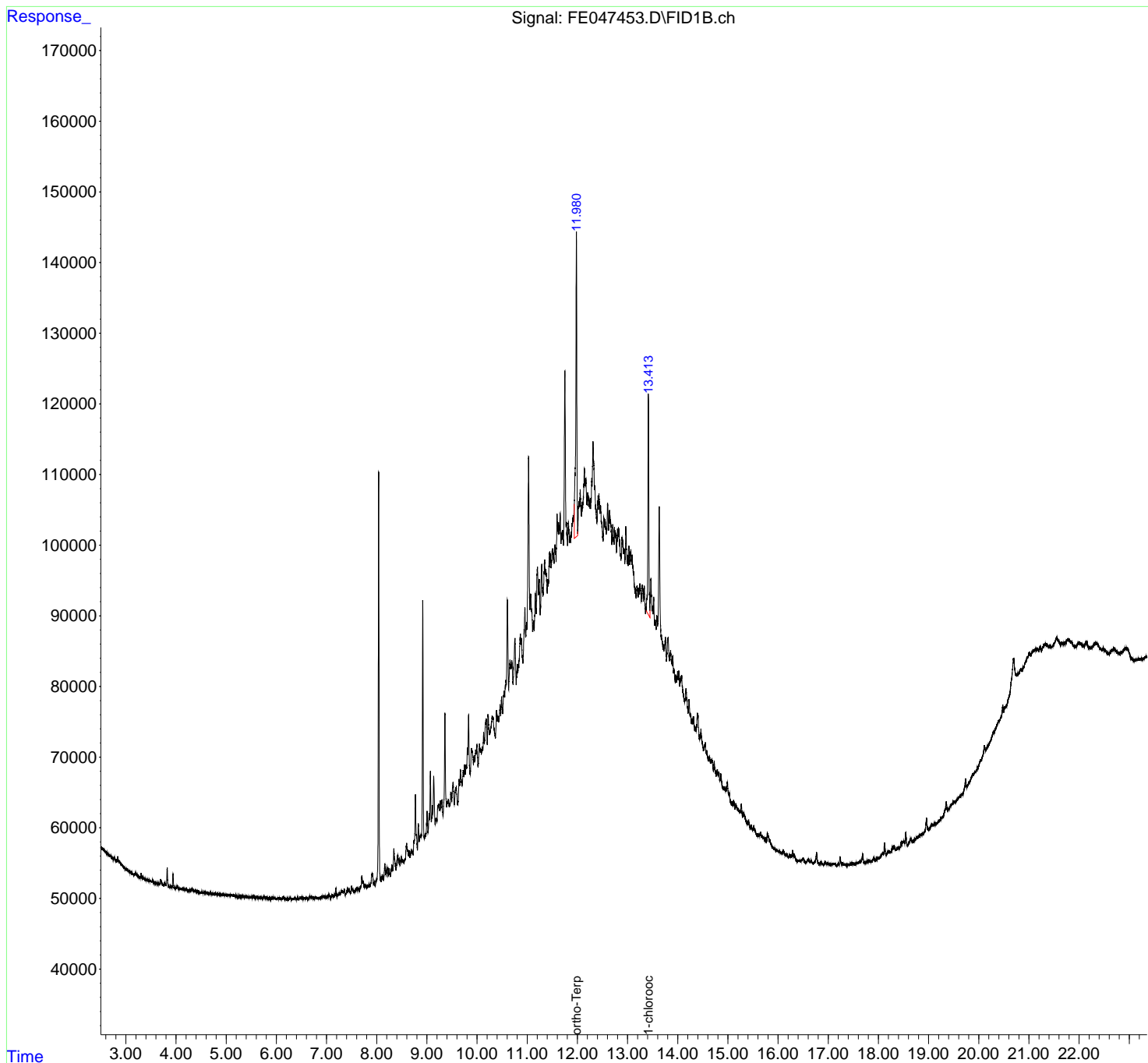
**APPROVED**

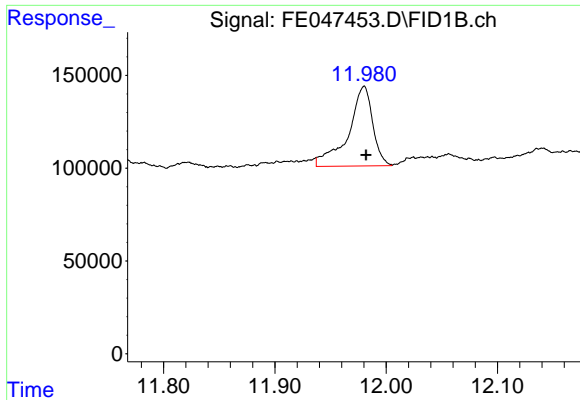
Reviewed By :Yogesh Patel 04/05/2024

Supervised By :Ankita Jodhani 04/05/2024

Integration File: autoint1.e  
 Quant Time: Apr 05 01:23:23 2024  
 Quant Method : Z:\pestpcbsrv\HPCHEM1\FID\_E\methods\Aliphatic EPH 040224.M  
 Quant Title : GC Extractables  
 QLast Update : Tue Apr 02 05:28:28 2024  
 Response via : Initial Calibration  
 Integrator: ChemStation

Volume Inj. : 1 ul  
 Signal Phase : Rxi-1ms  
 Signal Info : 20M x 0.18mm x 0.18um





#9 ortho-Terphenyl (SURR)

R.T.: 11.980 min  
Delta R.T.: -0.002 min  
Response: 654069  
Conc: 3.77 ug/ml

Instrument :

FID\_E

ClientSampleId :

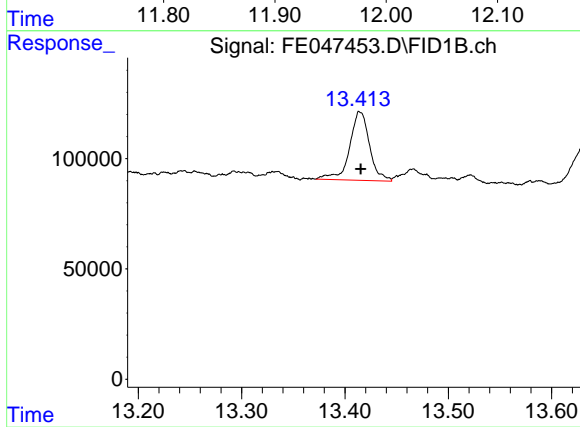
RBR21145DL

Manual Integrations

APPROVED

Reviewed By :Yogesh Patel 04/05/2024

Supervised By :Ankita Jodhani 04/05/2024



#12 1-chlorooctadecane (SURR)

R.T.: 13.415 min  
Delta R.T.: 0.000 min  
Response: 416197  
Conc: 3.09 ug/ml