

Data Path : Z:\pestpcbsrv\HPCHEM1\FID_E\Data\FE040824AL\
 Data File : FE047511.D
 Signal(s) : FID1B.ch
 Acq On : 08 Apr 2024 10:48
 Operator : YP\AJ
 Sample : P1995-05DL2 500X
 Misc :
 ALS Vial : 9 Sample Multiplier: 1

Instrument :
 FID_E
ClientSampleId :
 MOO-23-00113DL2

Integration File: autoint1.e
 Quant Time: Apr 09 01:43:53 2024
 Quant Method : Z:\pestpcbsrv\HPCHEM1\FID_E\methods\Aliphatic EPH 040224.M
 Quant Title : GC Extractables
 QLast Update : Tue Apr 02 05:28:28 2024
 Response via : Initial Calibration
 Integrator: ChemStation

Volume Inj. : 1 ul
 Signal Phase : Rxi-1ms
 Signal Info : 20M x 0.18mm x 0.18um

Compound	R.T.	Response	Conc Units

System Monitoring Compounds			
Target Compounds			

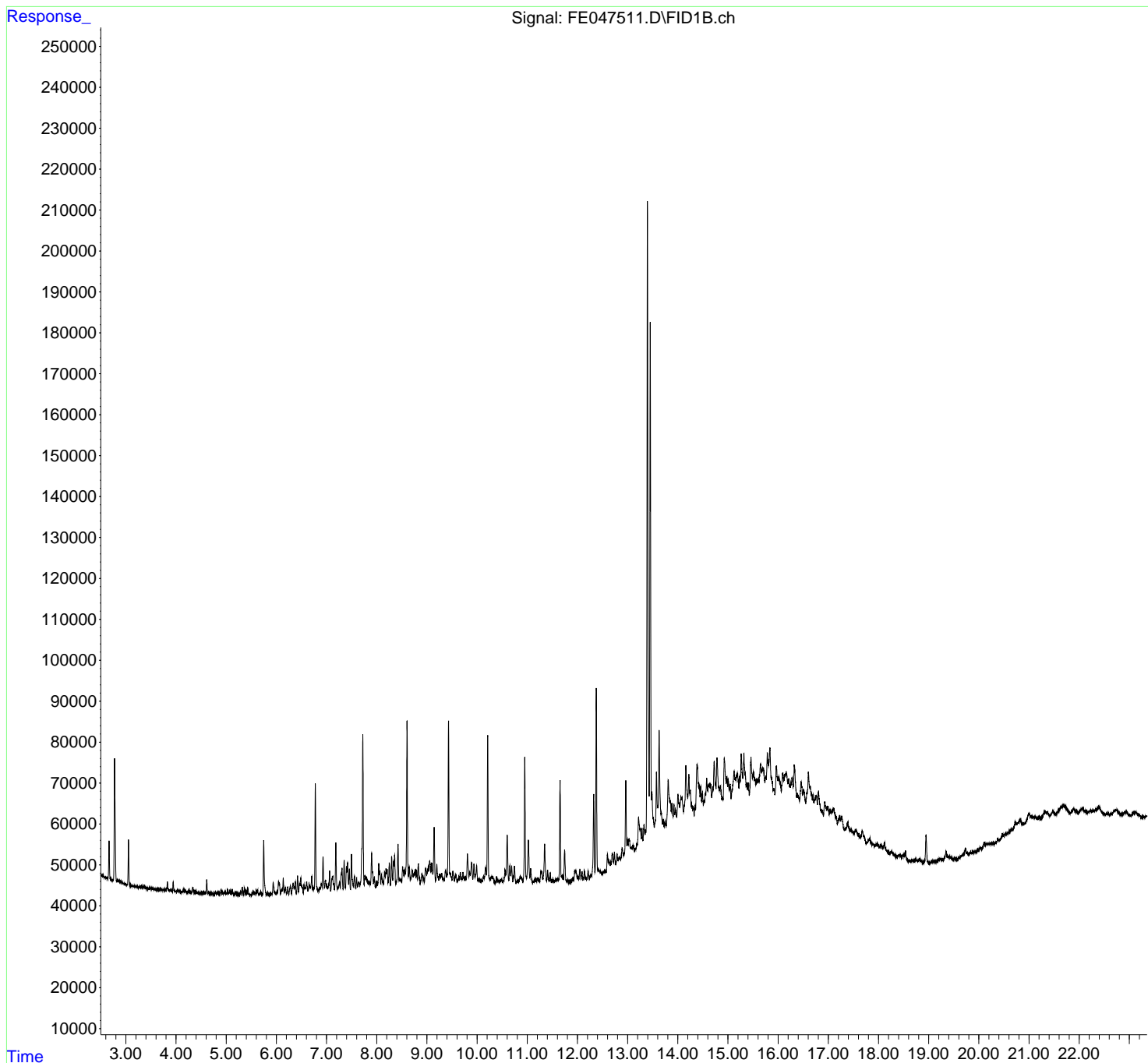
(f)=RT Delta > 1/2 Window (m)=manual int.

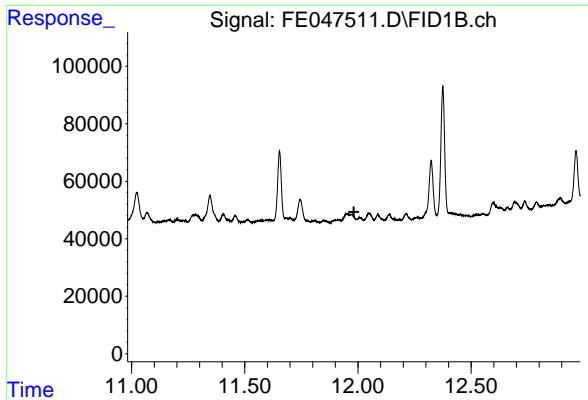
Data Path : Z:\pestpcbsrv\HPCHEM1\FID_E\Data\FE040824AL\
 Data File : FE047511.D
 Signal(s) : FID1B.ch
 Acq On : 08 Apr 2024 10:48
 Operator : YP\AJ
 Sample : P1995-05DL2 500X
 Misc :
 ALS Vial : 9 Sample Multiplier: 1

Instrument :
 FID_E
 ClientSampleId :
 MOO-23-00113DL2

Integration File: autoint1.e
 Quant Time: Apr 09 01:43:53 2024
 Quant Method : Z:\pestpcbsrv\HPCHEM1\FID_E\methods\Aliphatic EPH 040224.M
 Quant Title : GC Extractables
 QLast Update : Tue Apr 02 05:28:28 2024
 Response via : Initial Calibration
 Integrator: ChemStation

Volume Inj. : 1 ul
 Signal Phase : Rxi-1ms
 Signal Info : 20M x 0.18mm x 0.18um

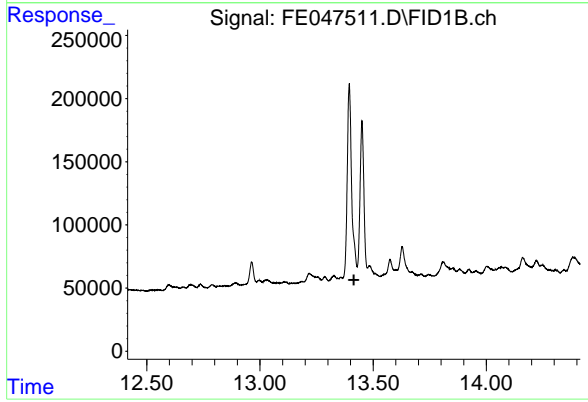




#9 ortho-Terphenyl (SURR)

R.T.: 0.000 min
Exp R.T. : 11.982 min
Response: 0
Conc: N.D.

Instrument :
FID_E
ClientSampleId :
MOO-23-00113DL2



#12 1-chlorooctadecane (SURR)

R.T.: 0.000 min
Exp R.T. : 13.415 min
Response: 0
Conc: N.D.