

Data Path : Z:\pestpcbsrv\HPCHEM1\FID_E\Data\FE040824AL\
 Data File : FE047525.D
 Signal(s) : FID1B.ch
 Acq On : 08 Apr 2024 18:29
 Operator : YP\AJ
 Sample : P2005-06
 Misc :
 ALS Vial : 17 Sample Multiplier: 1

Instrument :
 FID_E
 ClientSampleId :
 SOD03

Integration File: autoint1.e
 Quant Time: Apr 09 01:46:05 2024
 Quant Method : Z:\pestpcbsrv\HPCHEM1\FID_E\methods\Aliphatic EPH 040224.M
 Quant Title : GC Extractables
 QLast Update : Tue Apr 02 05:28:28 2024
 Response via : Initial Calibration
 Integrator: ChemStation

Volume Inj. : 1 ul
 Signal Phase : Rxi-1ms
 Signal Info : 20M x 0.18mm x 0.18um

Compound	R.T.	Response	Conc Units

System Monitoring Compounds			
12) S 1-chlorooctadecane (S...	13.411	4881402	36.294 ug/ml
Spiked Amount	50.000	Recovery	= 72.59%

Target Compounds

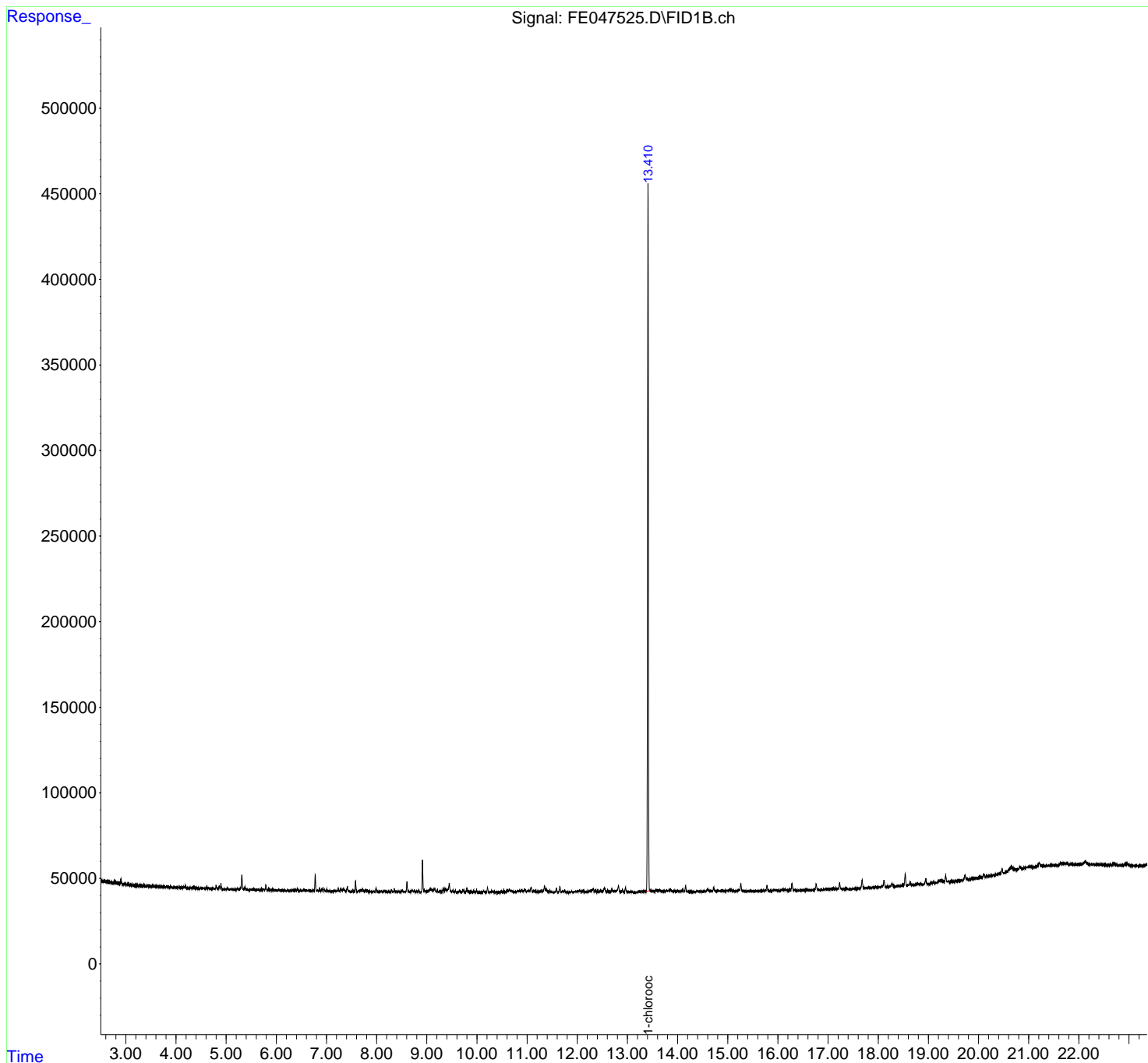
(f)=RT Delta > 1/2 Window (m)=manual int.

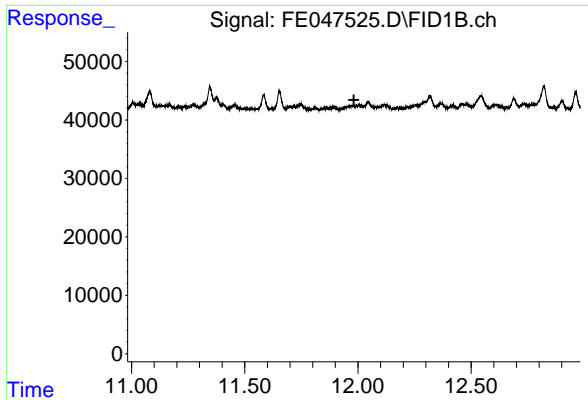
Data Path : Z:\pestpcbsrv\HPCHEM1\FID_E\Data\FE040824AL\
Data File : FE047525.D
Signal(s) : FID1B.ch
Acq On : 08 Apr 2024 18:29
Operator : YP\AJ
Sample : P2005-06
Misc :
ALS Vial : 17 Sample Multiplier: 1

Instrument :
FID_E
ClientSampleId :
SOD03

Integration File: autoint1.e
Quant Time: Apr 09 01:46:05 2024
Quant Method : Z:\pestpcbsrv\HPCHEM1\FID_E\methods\Aliphatic EPH 040224.M
Quant Title : GC Extractables
QLast Update : Tue Apr 02 05:28:28 2024
Response via : Initial Calibration
Integrator: ChemStation

Volume Inj. : 1 ul
Signal Phase : Rxi-1ms
Signal Info : 20M x 0.18mm x 0.18um

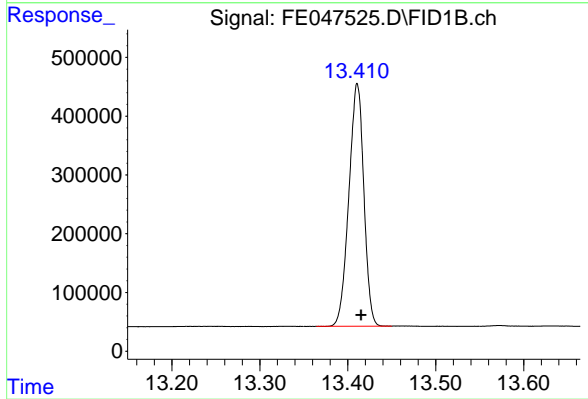




#9 ortho-Terphenyl (SURR)

R.T.: 0.000 min
 Exp R.T.: 11.982 min
 Response: 0
 Conc: N.D.

Instrument :
 FID_E
 ClientSampleId :
 SOD03



#12 1-chlorooctadecane (SURR)

R.T.: 13.411 min
 Delta R.T.: -0.004 min
 Response: 4881402
 Conc: 36.29 ug/ml