

Data Path : Z:\pestpcbsrv\HPCHEM1\FID_E\Data\FE040825AL\
 Data File : FE053245.D
 Signal(s) : FID1B.ch
 Acq On : 08 Apr 2025 20:08
 Operator : YP\AJ
 Sample : Q1743-01
 Misc :
 ALS Vial : 18 Sample Multiplier: 1

Instrument :
 FID_E
 ClientSampleId :
 TP-16

Integration File: autoint1.e
 Quant Time: Apr 09 05:07:57 2025
 Quant Method : Z:\pestpcbsrv\HPCHEM1\FID_E\methods\Aliphatic EPH 032925.M
 Quant Title : GC Extractables
 QLast Update : Mon Mar 31 02:44:53 2025
 Response via : Initial Calibration
 Integrator: ChemStation

Volume Inj. : 1 ul
 Signal Phase : Rxi-1ms
 Signal Info : 20M x 0.18mm x 0.18um

Compound	R.T.	Response	Conc Units

System Monitoring Compounds			
9) S ortho-Terphenyl (SURR)	11.895	5593824	34.343 ug/ml
Spiked Amount	50.000	Recovery	= 68.69%
12) S 1-chlorooctadecane (S...	13.340	4238594	35.309 ug/ml
Spiked Amount	50.000	Recovery	= 70.62%

Target Compounds

(f)=RT Delta > 1/2 Window

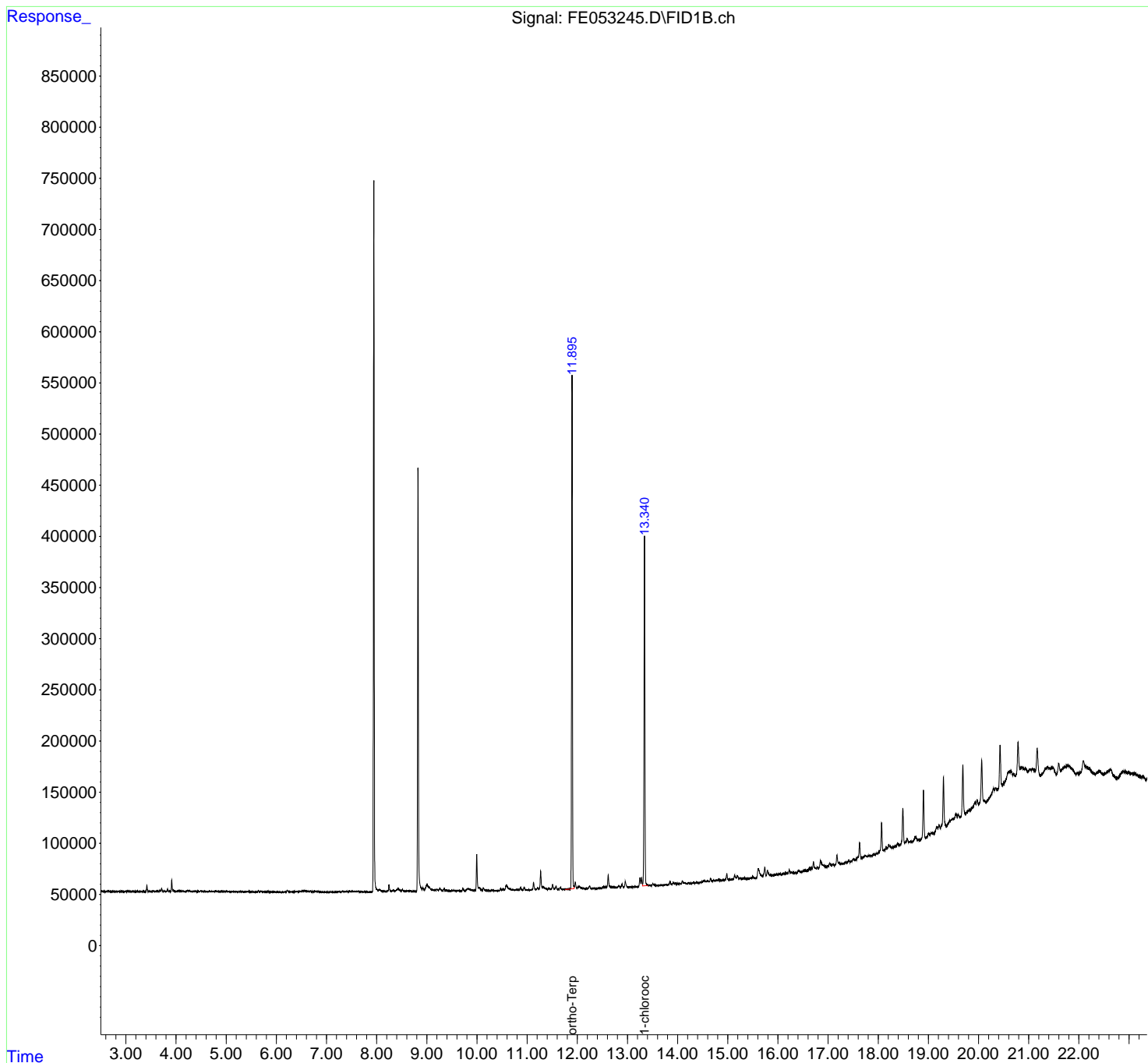
(m)=manual int.

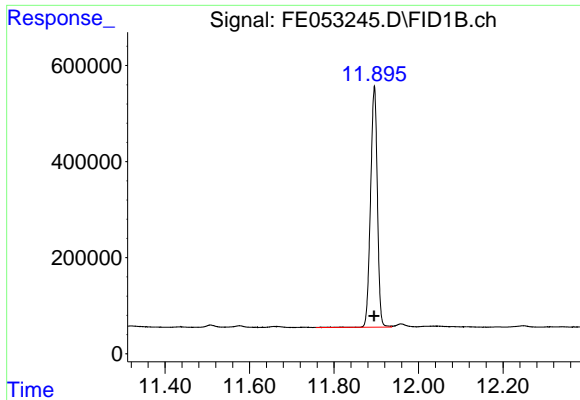
Data Path : Z:\pestpcbsrv\HPCHEM1\FID_E\Data\FE040825AL\
Data File : FE053245.D
Signal(s) : FID1B.ch
Acq On : 08 Apr 2025 20:08
Operator : YP\AJ
Sample : Q1743-01
Misc :
ALS Vial : 18 Sample Multiplier: 1

Instrument :
FID_E
ClientSampleId :
TP-16

Integration File: autoint1.e
Quant Time: Apr 09 05:07:57 2025
Quant Method : Z:\pestpcbsrv\HPCHEM1\FID_E\methods\Aliphatic EPH 032925.M
Quant Title : GC Extractables
QLast Update : Mon Mar 31 02:44:53 2025
Response via : Initial Calibration
Integrator: ChemStation

Volume Inj. : 1 ul
Signal Phase : Rxi-1ms
Signal Info : 20M x 0.18mm x 0.18um

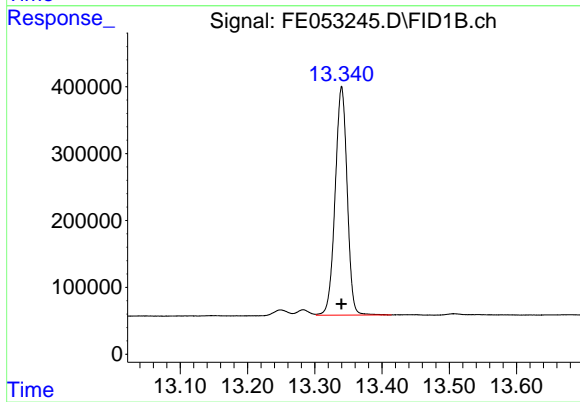




#9 ortho-Terphenyl (SURR)

R.T.: 11.895 min
Delta R.T.: 0.000 min
Response: 5593824
Conc: 34.34 ug/ml

Instrument :
FID_E
ClientSampleId :
TP-16



#12 1-chlorooctadecane (SURR)

R.T.: 13.340 min
Delta R.T.: 0.000 min
Response: 4238594
Conc: 35.31 ug/ml