

Data Path : Z:\pestpcbsrv\HPCHEM1\FID_E\Data\FE040825AL\
 Data File : FE053264.D
 Signal(s) : FID1B.ch
 Acq On : 09 Apr 2025 06:39
 Operator : YP\AJ
 Sample : Q1746-01D
 Misc :
 ALS Vial : 35 Sample Multiplier: 1

Instrument :
 FID_E
 ClientSampleId :
 B-149-SB01

Integration File: autoint1.e
 Quant Time: Apr 09 08:11:39 2025
 Quant Method : Z:\pestpcbsrv\HPCHEM1\FID_E\methods\Aliphatic EPH 032925.M
 Quant Title : GC Extractables
 QLast Update : Mon Mar 31 02:44:53 2025
 Response via : Initial Calibration
 Integrator: ChemStation

Volume Inj. : 1 ul
 Signal Phase : Rxi-1ms
 Signal Info : 20M x 0.18mm x 0.18um

Compound	R.T.	Response	Conc Units

System Monitoring Compounds			
12) S 1-chlorooctadecane (S...	13.335	6764172	56.347 ug/ml
Spiked Amount	50.000	Recovery	= 112.69%

Target Compounds

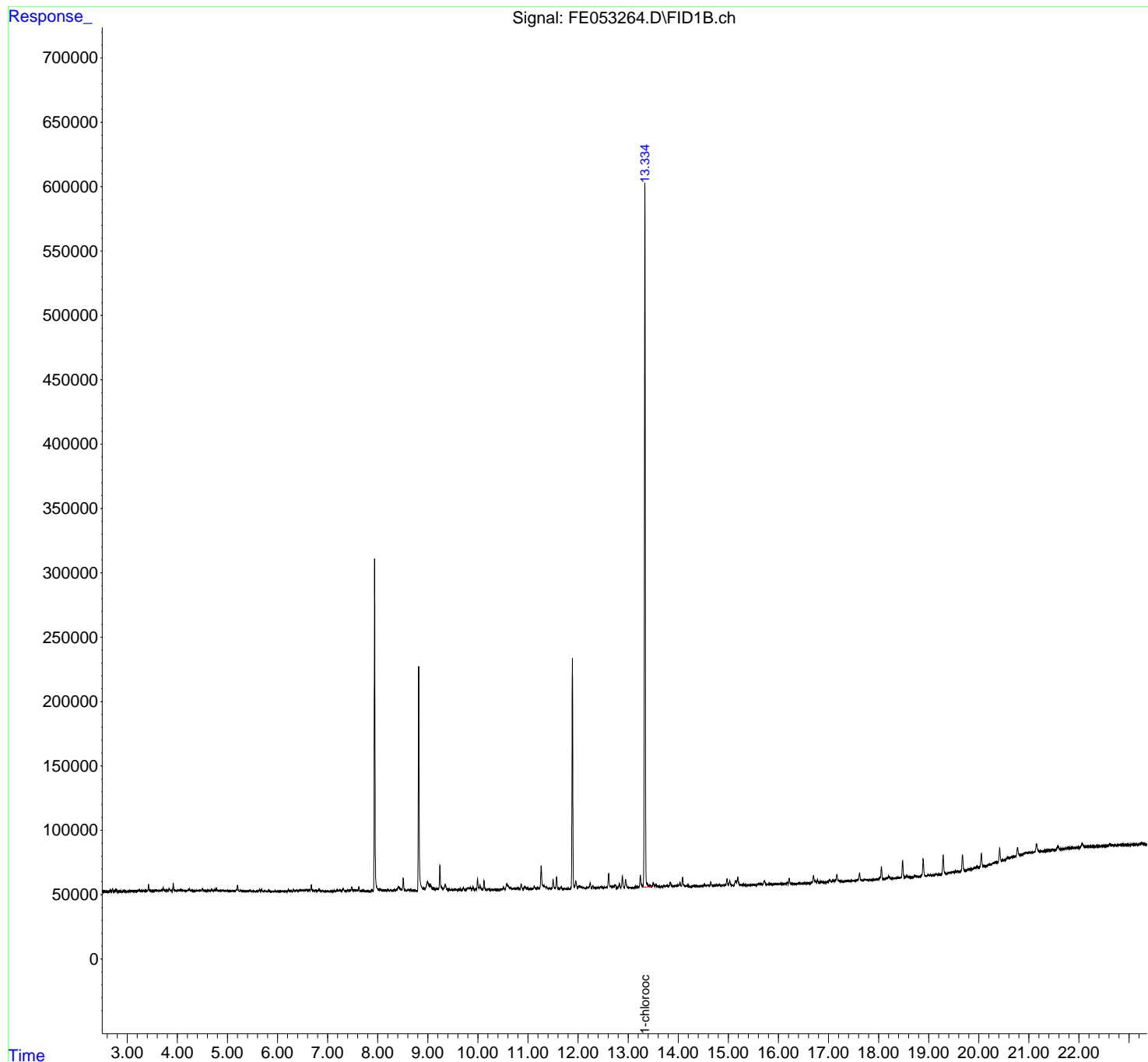
(f)=RT Delta > 1/2 Window (m)=manual int.

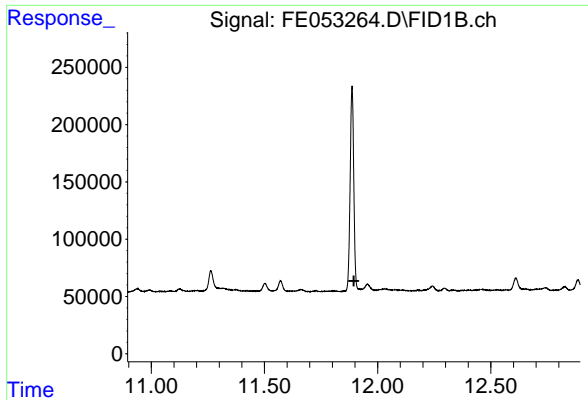
Data Path : Z:\pestpcbsrv\HPCHEM1\FID_E\Data\FE040825AL\
Data File : FE053264.D
Signal(s) : FID1B.ch
Acq On : 09 Apr 2025 06:39
Operator : YP\AJ
Sample : Q1746-01D
Misc :
ALS Vial : 35 Sample Multiplier: 1

Instrument :
FID_E
ClientSampleId :
B-149-SB01

Integration File: autoint1.e
Quant Time: Apr 09 08:11:39 2025
Quant Method : Z:\pestpcbsrv\HPCHEM1\FID_E\methods\Aliphatic EPH 032925.M
Quant Title : GC Extractables
QLast Update : Mon Mar 31 02:44:53 2025
Response via : Initial Calibration
Integrator: ChemStation

Volume Inj. : 1 ul
Signal Phase : Rxi-1ms
Signal Info : 20M x 0.18mm x 0.18um

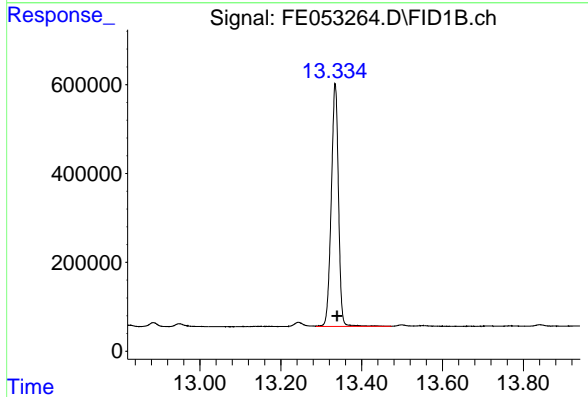




#9 ortho-Terphenyl (SURR)

R.T.: 0.000 min
 Exp R.T.: 11.895 min
 Response: 0
 Conc: N.D.

Instrument : FID_E
 ClientSampleId : B-149-SB01



#12 1-chlorooctadecane (SURR)

R.T.: 13.335 min
 Delta R.T.: -0.005 min
 Response: 6764172
 Conc: 56.35 ug/ml