

Data Path : Z:\pestpcbsrv\HPCHEM1\FID_E\Data\FE041024AL\
 Data File : FE047548.D
 Signal(s) : FID1B.ch
 Acq On : 10 Apr 2024 10:16
 Operator : YP\AJ
 Sample : P2022-02DL 10X
 Misc :
 ALS Vial : 7 Sample Multiplier: 1

Integration File: autoint1.e
 Quant Time: Apr 11 01:12:29 2024
 Quant Method : Z:\pestpcbsrv\HPCHEM1\FID_E\methods\Aliphatic EPH 040224.M
 Quant Title : GC Extractables
 QLast Update : Tue Apr 02 05:28:28 2024
 Response via : Initial Calibration
 Integrator: ChemStation

Volume Inj. : 1 ul
 Signal Phase : Rxi-1ms
 Signal Info : 20M x 0.18mm x 0.18um

Compound	R.T.	Response	Conc Units

System Monitoring Compounds			
9) S ortho-Terphenyl (SURR)	11.983	398541	2.298 ug/ml
Spiked Amount	50.000	Recovery	= 4.60%
12) S 1-chlorooctadecane (S...	13.418	328675	2.444 ug/ml
Spiked Amount	50.000	Recovery	= 4.89%

Target Compounds

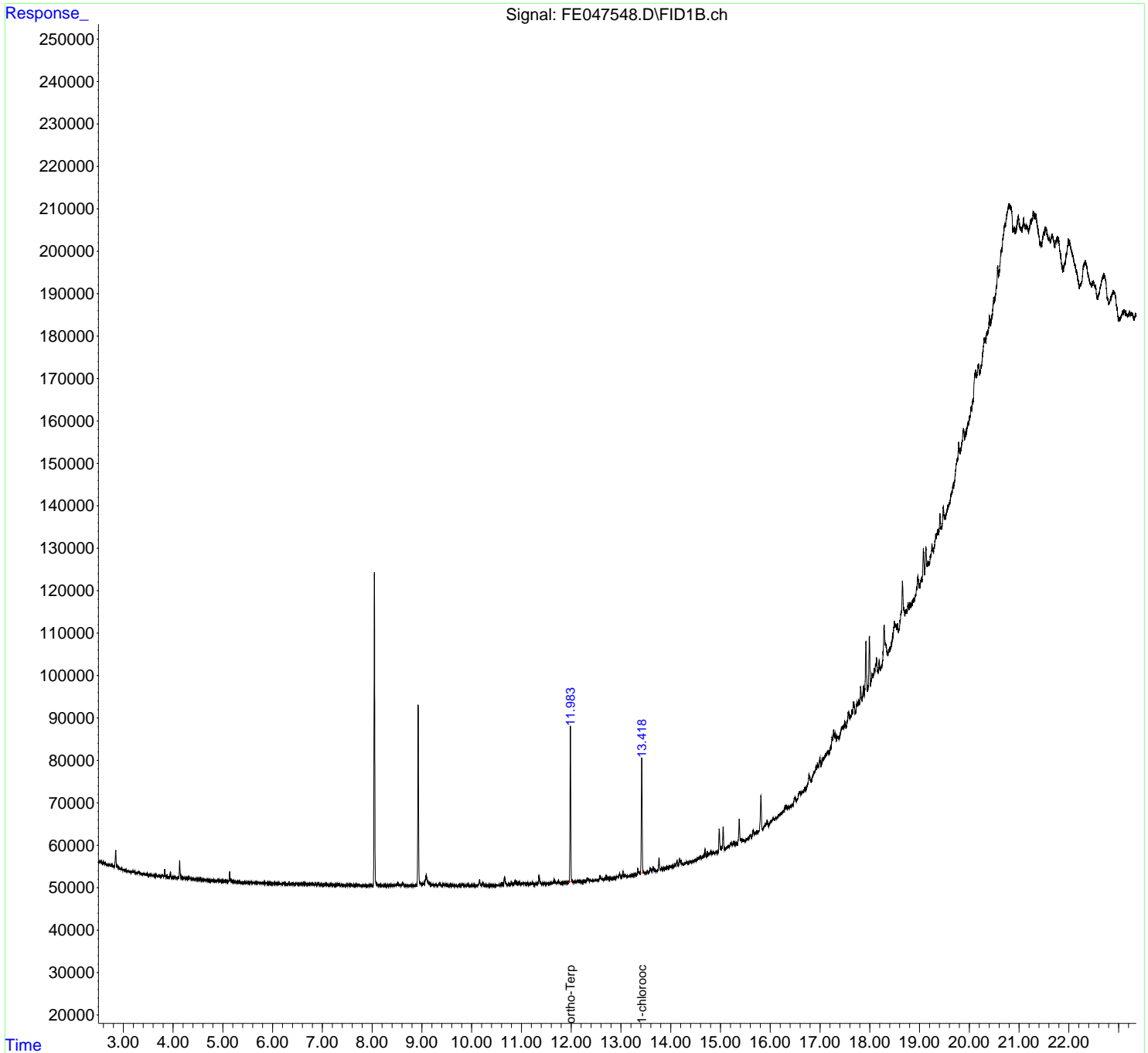
(f)=RT Delta > 1/2 Window

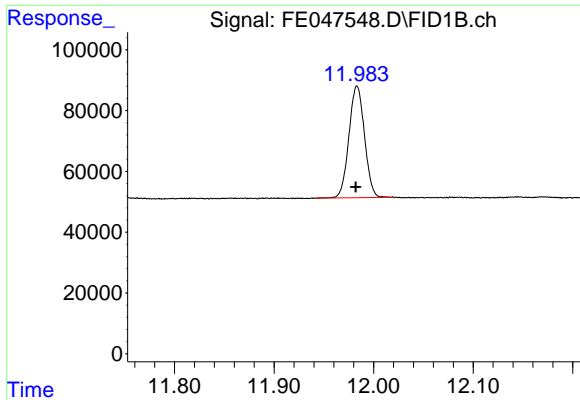
(m)=manual int.

Data Path : Z:\pestpcbsrv\HPCHEM1\FID_E\Data\FE041024AL\
Data File : FE047548.D
Signal(s) : FID1B.ch
Acq On : 10 Apr 2024 10:16
Operator : YP\AJ
Sample : P2022-02DL 10X
Misc :
ALS Vial : 7 Sample Multiplier: 1

Integration File: autoint1.e
Quant Time: Apr 11 01:12:29 2024
Quant Method : Z:\pestpcbsrv\HPCHEM1\FID_E\methods\Aliphatic EPH 040224.M
Quant Title : GC Extractables
QLast Update : Tue Apr 02 05:28:28 2024
Response via : Initial Calibration
Integrator: ChemStation

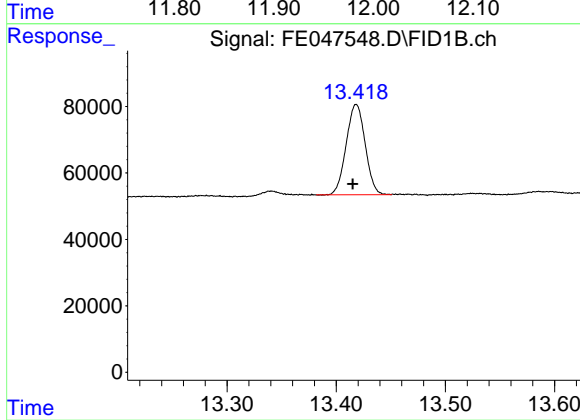
Volume Inj. : 1 ul
Signal Phase : Rxi-1ms
Signal Info : 20M x 0.18mm x 0.18um





#9 ortho-Terphenyl (SURR)

R.T.: 11.983 min
Delta R.T.: 0.001 min
Response: 398541
Conc: 2.30 ug/ml



#12 1-chlorooctadecane (SURR)

R.T.: 13.418 min
Delta R.T.: 0.003 min
Response: 328675
Conc: 2.44 ug/ml