

Data Path : Z:\pestpcbsrv\HPCHEM1\FID_E\Data\FE041125AL\
 Data File : FE053325.D
 Signal(s) : FID1B.ch
 Acq On : 11 Apr 2025 16:11
 Operator : YP\AJ
 Sample : Q1779-05
 Misc :
 ALS Vial : 14 Sample Multiplier: 1

Instrument :
 FID_E
 ClientSampleId :
 TP-23

Integration File: autoint1.e
 Quant Time: Apr 11 22:46:50 2025
 Quant Method : Z:\pestpcbsrv\HPCHEM1\FID_E\methods\Aliphatic EPH 032925.M
 Quant Title : GC Extractables
 QLast Update : Mon Mar 31 02:44:53 2025
 Response via : Initial Calibration
 Integrator: ChemStation

Volume Inj. : 1 ul
 Signal Phase : Rxi-1ms
 Signal Info : 20M x 0.18mm x 0.18um

Compound	R.T.	Response	Conc Units
System Monitoring Compounds			
9) S ortho-Terphenyl (SURR)	11.890	4804553	29.497 ug/ml
Spiked Amount	50.000	Recovery	= 58.99%
12) S 1-chlorooctadecane (S...	13.335	3646127	30.373 ug/ml
Spiked Amount	50.000	Recovery	= 60.75%

Target Compounds

(f)=RT Delta > 1/2 Window

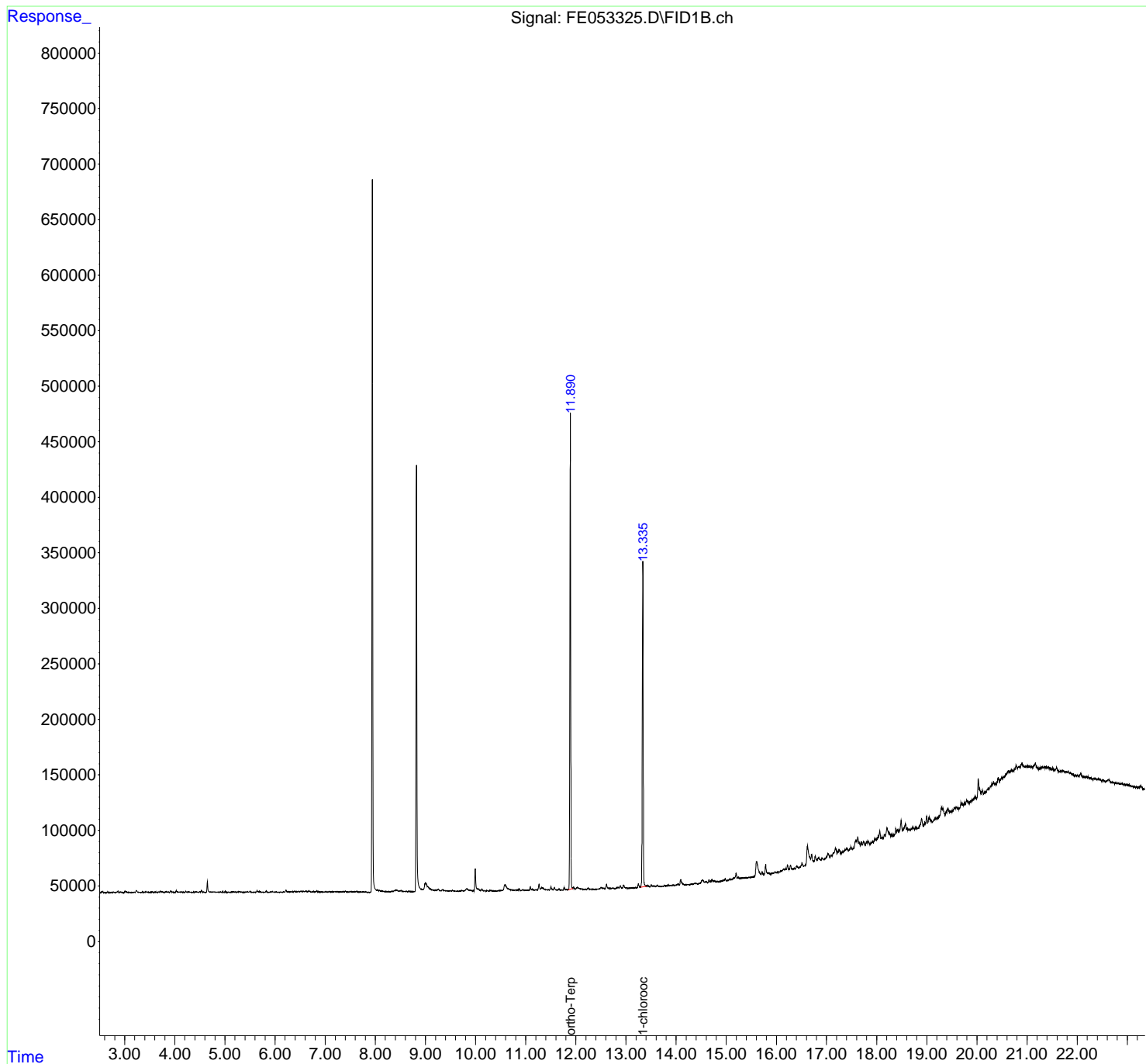
(m)=manual int.

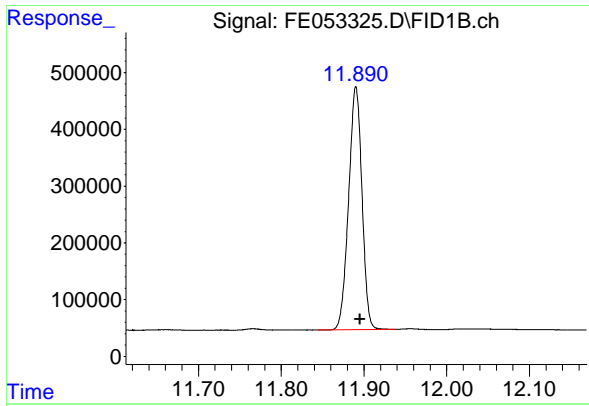
Data Path : Z:\pestpcbsrv\HPCHEM1\FID_E\Data\FE041125AL\
 Data File : FE053325.D
 Signal(s) : FID1B.ch
 Acq On : 11 Apr 2025 16:11
 Operator : YP\AJ
 Sample : Q1779-05
 Misc :
 ALS Vial : 14 Sample Multiplier: 1

Instrument :
 FID_E
 ClientSampleId :
 TP-23

Integration File: autoint1.e
 Quant Time: Apr 11 22:46:50 2025
 Quant Method : Z:\pestpcbsrv\HPCHEM1\FID_E\methods\Aliphatic EPH 032925.M
 Quant Title : GC Extractables
 QLast Update : Mon Mar 31 02:44:53 2025
 Response via : Initial Calibration
 Integrator: ChemStation

Volume Inj. : 1 ul
 Signal Phase : Rxi-1ms
 Signal Info : 20M x 0.18mm x 0.18um

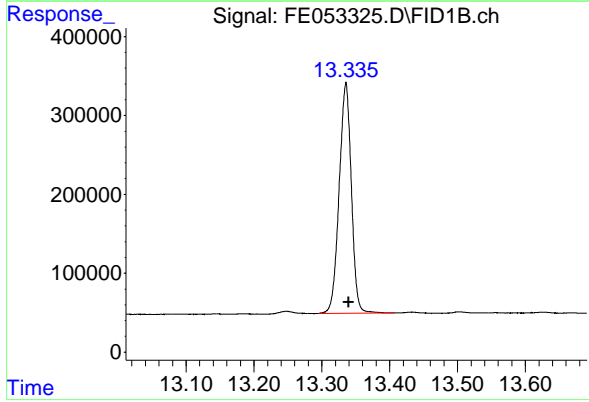




#9 ortho-Terphenyl (SURR)

R.T.: 11.890 min
 Delta R.T.: -0.005 min
 Response: 4804553
 Conc: 29.50 ug/ml

Instrument :
 FID_E
 ClientSampleId :
 TP-23



#12 1-chlorooctadecane (SURR)

R.T.: 13.335 min
 Delta R.T.: -0.004 min
 Response: 3646127
 Conc: 30.37 ug/ml