

Data Path : Z:\pestpcbsrv\HPCHEM1\FID\_E\Data\FE041221AL\  
Data File : FE033565.D  
Signal(s) : FID1B.CH  
Acq On : 12 Apr 2021 10:37  
Operator : DD\AJ  
Sample : MECL2  
Misc :  
ALS Vial : 1 Sample Multiplier: 1

Integration File: autoint1.e  
Quant Time: Apr 13 07:48:09 2021  
Quant Method : Z:\pestpcbsrv\HPCHEM1\FID\_E\methods\Alaphatic EPH 040921.M  
Quant Title : GC Extractables  
QLast Update : Fri Apr 09 23:46:40 2021  
Response via : Initial Calibration  
Integrator: ChemStation 6890 Scale Mode: Large solvent peaks clipped

Volume Inj. : 1 ul  
Signal Phase : Rxi-1ms  
Signal Info : 20M x 0.18mm x 0.18um

Compound	R.T.	Response	Conc Units
-----			
System Monitoring Compounds			
Target Compounds			
-----			

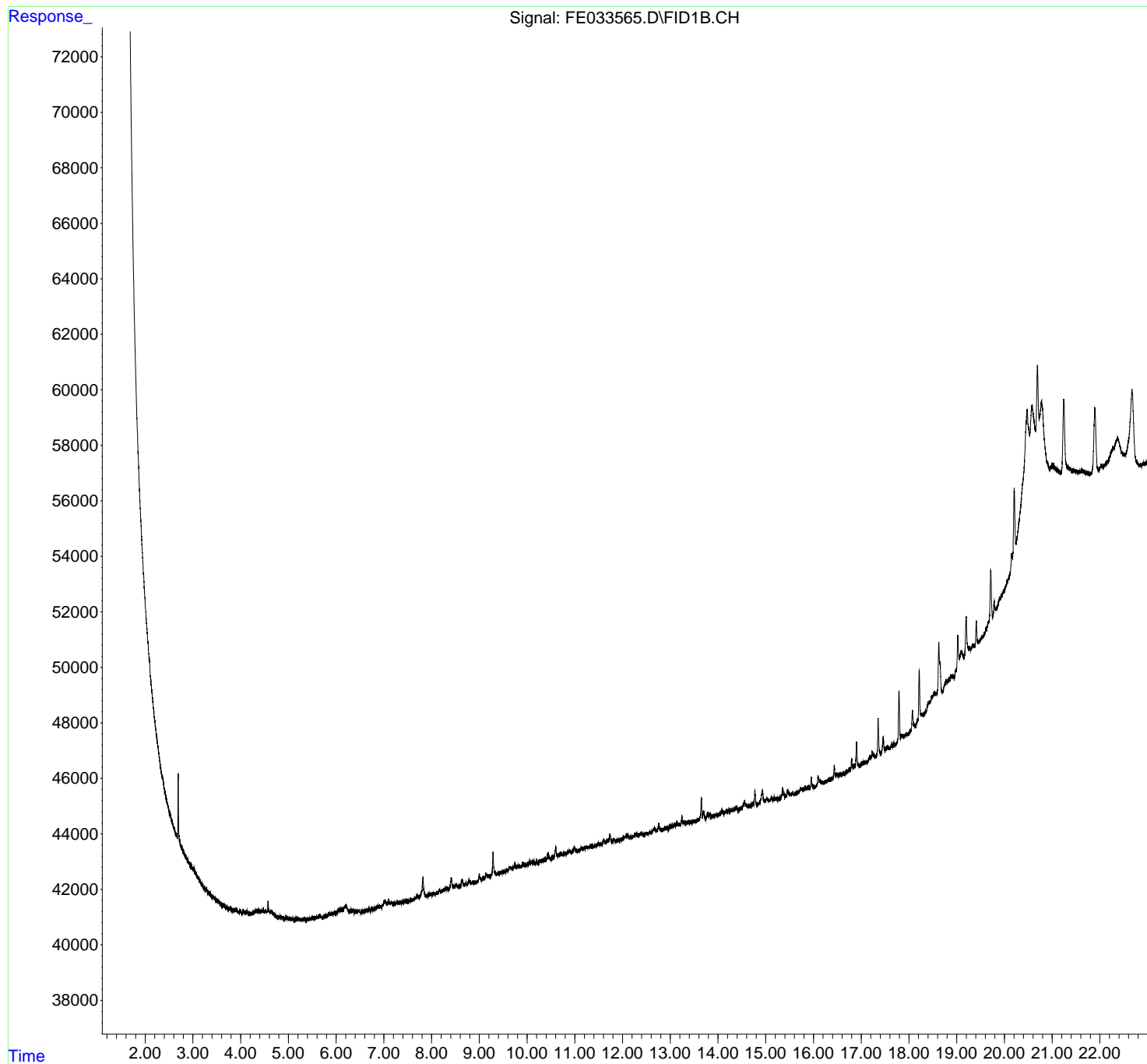
(f)=RT Delta > 1/2 Window

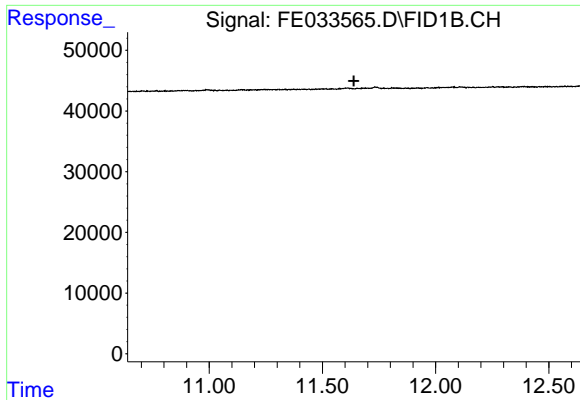
(m)=manual int.

Data Path : Z:\pestpcbsrv\HPCHEM1\FID\_E\Data\FE041221AL\  
Data File : FE033565.D  
Signal(s) : FID1B.CH  
Acq On : 12 Apr 2021 10:37  
Operator : DD\AJ  
Sample : MECL2  
Misc :  
ALS Vial : 1 Sample Multiplier: 1

Integration File: autoint1.e  
Quant Time: Apr 13 07:48:09 2021  
Quant Method : Z:\pestpcbsrv\HPCHEM1\FID\_E\methods\Alaphatic EPH 040921.M  
Quant Title : GC Extractables  
QLast Update : Fri Apr 09 23:46:40 2021  
Response via : Initial Calibration  
Integrator: ChemStation 6890 Scale Mode: Large solvent peaks clipped

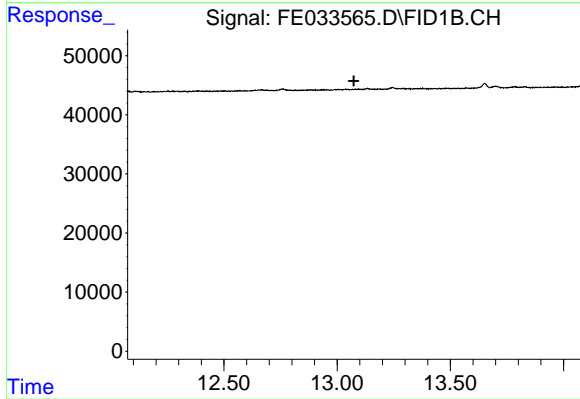
Volume Inj. : 1 ul  
Signal Phase : Rxi-1ms  
Signal Info : 20M x 0.18mm x 0.18um





#9 ortho-Terphenyl (SURR)

R.T.: 0.000 min  
Exp R.T. : 11.639 min  
Response: 0  
Conc: N.D.



#12 1-chlorooctadecane (SURR)

R.T.: 0.000 min  
Exp R.T. : 13.074 min  
Response: 0  
Conc: N.D.