

Data Path : Z:\pestpcbsrv\HPCHEM1\FID\_E\Data\FE041223AL\  
 Data File : FE041326.D  
 Signal(s) : FID1B.ch  
 Acq On : 12 Apr 2023 12:52  
 Operator : YP\AJ  
 Sample : PB151929BL  
 Misc :  
 ALS Vial : 15 Sample Multiplier: 1

Instrument :  
 FID\_E  
 ClientSampleId :

Integration File: autoint1.e  
 Quant Time: Apr 13 01:10:33 2023  
 Quant Method : Z:\pestpcbsrv\HPCHEM1\FID\_E\methods\Aliphatic EPH 032523.M  
 Quant Title : GC Extractables  
 QLast Update : Sat Mar 25 06:32:15 2023  
 Response via : Initial Calibration  
 Integrator: ChemStation

Volume Inj. : 1 ul  
 Signal Phase : Rxi-1ms  
 Signal Info : 20M x 0.18mm x 0.18um

Compound	R.T.	Response	Conc Units
-----			
System Monitoring Compounds			
9) S ortho-Terphenyl (SURR)	11.836	431431	2.296 ug/ml
Spiked Amount	50.000	Recovery =	4.59%
12) S 1-chlorooctadecane (S...	13.278	7988309	55.521 ug/ml
Spiked Amount	50.000	Recovery =	111.04%
Target Compounds			
4) T n-Dodecane (C12)	6.652	56411	0.325 ug/ml
6) T n-Tetradecane (C14)	8.477	44443	0.255 ug/ml
7) T n-Hexadecane (C16)	10.082	36171	0.203 ug/ml
8) T n-Octadecane (C18)	11.522	71668	0.401 ug/ml
10) T n-Eicosane (C20)	12.831	109867	0.644 ug/ml
13) T n-Docosane (C22)	14.028	202020	1.221 ug/ml
14) T n-Tetracosane (C24)	15.130	392933	2.429 ug/ml
15) T n-Hexacosane (C26)	16.153	513148	3.310 ug/ml
16) T n-Octacosane (C28)	17.103	619357	4.043 ug/ml
17) T n-Tricontane (C30)	17.992	713468	4.668 ug/ml
18) T n-Dotriacontane (C32)	18.827	518944	3.324 ug/ml
19) T n-Tetratriacontane (C34)	19.610	142666	0.921 ug/ml
20) T n-Hexatriacontane (C36)	20.353	261109	1.719 ug/ml
21) T n-Octatriacontane (C38)	21.076	21953	0.141 ug/ml
22) T n-Tetracontane (C40)	21.952	65422	0.410 ug/ml
-----			

(f)=RT Delta > 1/2 Window

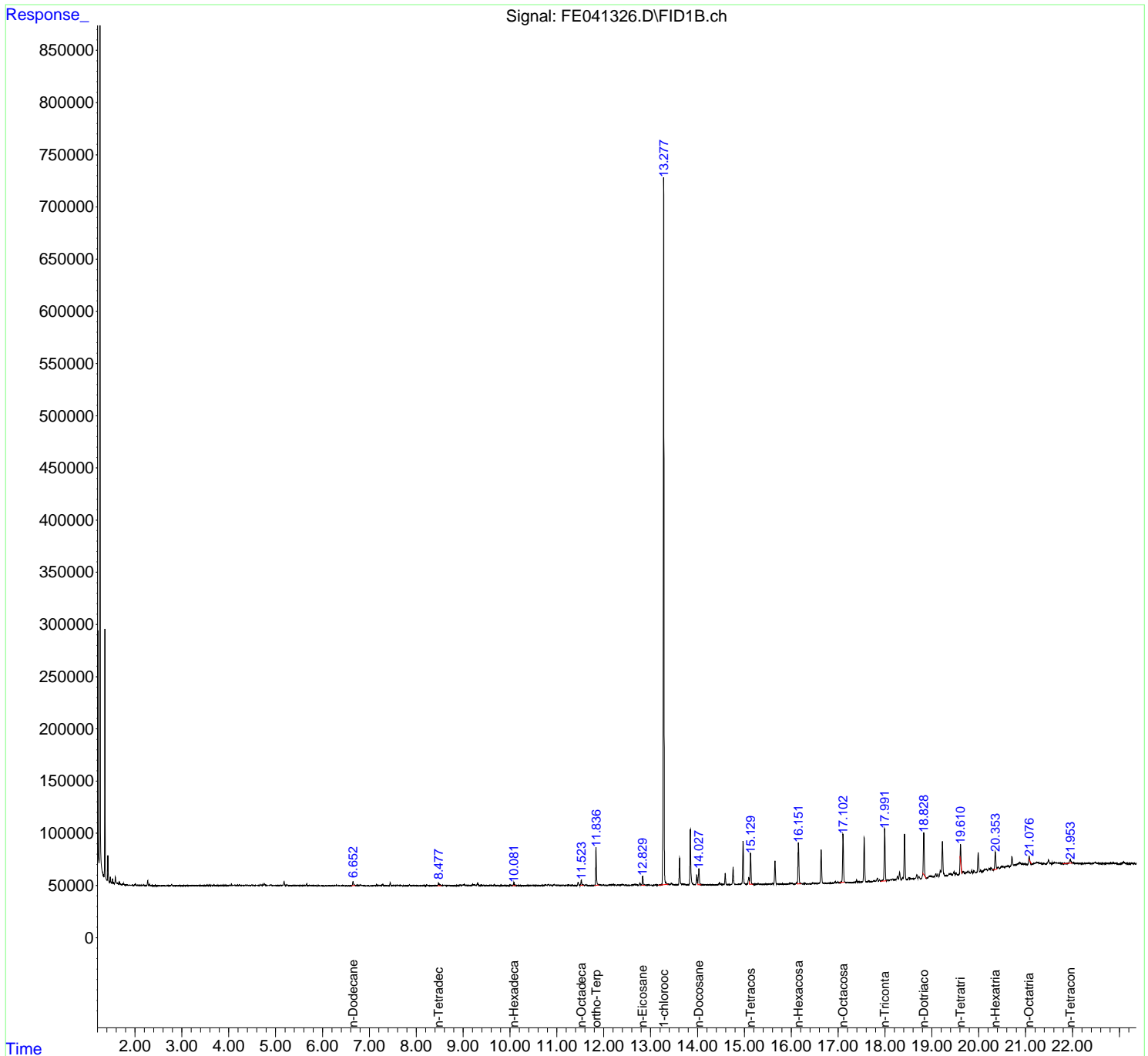
(m)=manual int.

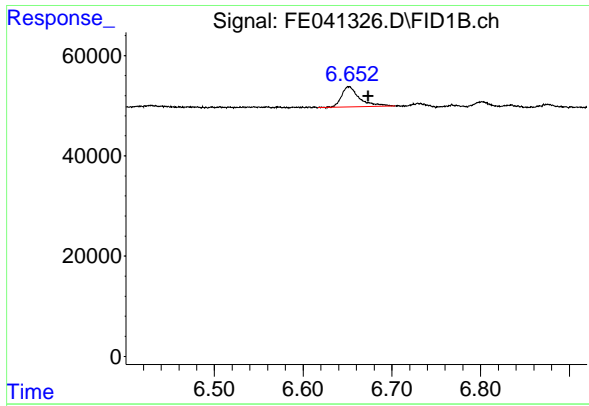
Data Path : Z:\pestpcbsrv\HPCHEM1\FID\_E\Data\FE041223AL\  
 Data File : FE041326.D  
 Signal(s) : FID1B.ch  
 Acq On : 12 Apr 2023 12:52  
 Operator : YP\AJ  
 Sample : PB151929BL  
 Misc :  
 ALS Vial : 15 Sample Multiplier: 1

Instrument :  
 FID\_E  
 ClientSampleId :

Integration File: autoint1.e  
 Quant Time: Apr 13 01:10:33 2023  
 Quant Method : Z:\pestpcbsrv\HPCHEM1\FID\_E\methods\Aliphatic EPH 032523.M  
 Quant Title : GC Extractables  
 QLast Update : Sat Mar 25 06:32:15 2023  
 Response via : Initial Calibration  
 Integrator: ChemStation

Volume Inj. : 1 ul  
 Signal Phase : Rxi-1ms  
 Signal Info : 20M x 0.18mm x 0.18um

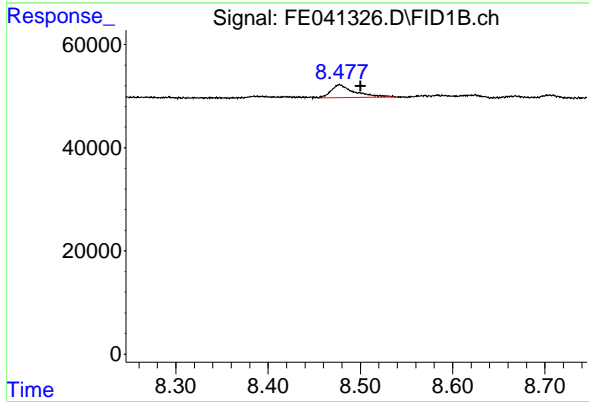




#4 n-Dodecane (C12)

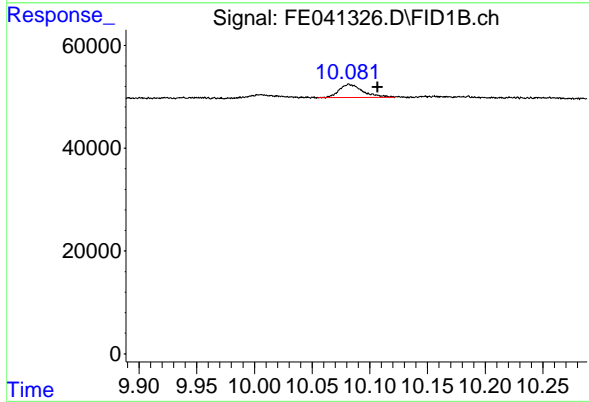
R.T.: 6.652 min  
 Delta R.T.: -0.022 min  
 Response: 56411  
 Conc: 0.33 ug/ml

Instrument :  
 FID\_E  
 ClientSampleId :



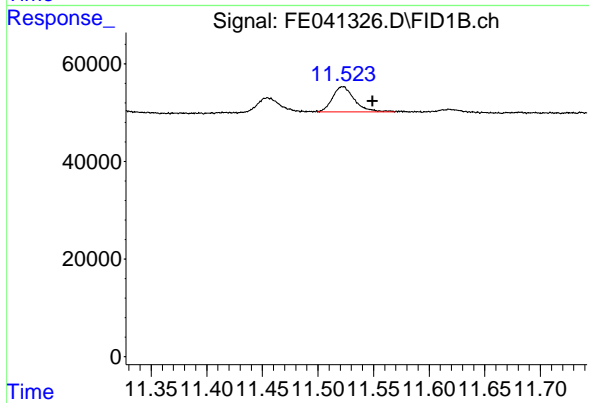
#6 n-Tetradecane (C14)

R.T.: 8.477 min  
 Delta R.T.: -0.023 min  
 Response: 44443  
 Conc: 0.25 ug/ml



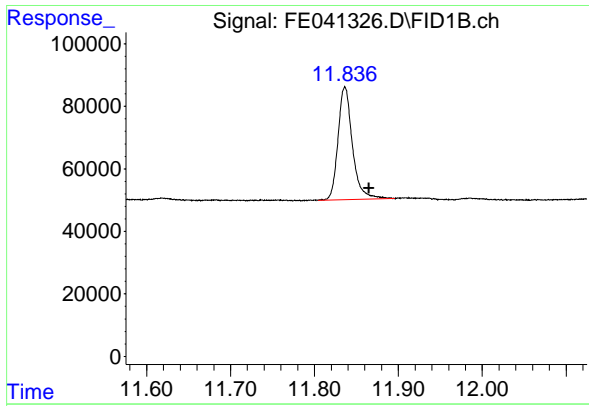
#7 n-Hexadecane (C16)

R.T.: 10.082 min  
 Delta R.T.: -0.025 min  
 Response: 36171  
 Conc: 0.20 ug/ml



#8 n-Octadecane (C18)

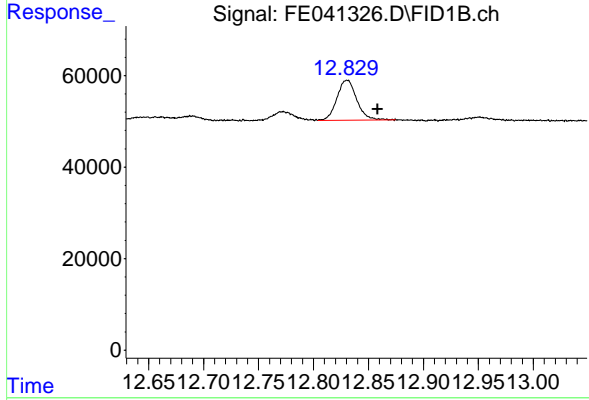
R.T.: 11.522 min  
 Delta R.T.: -0.027 min  
 Response: 71668  
 Conc: 0.40 ug/ml



#9 ortho-Terphenyl (SURR)

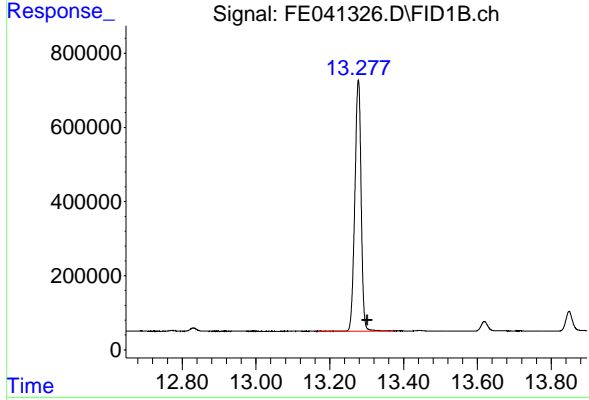
R.T.: 11.836 min  
Delta R.T.: -0.029 min  
Response: 431431  
Conc: 2.30 ug/ml

Instrument :  
FID\_E  
ClientSampleId :



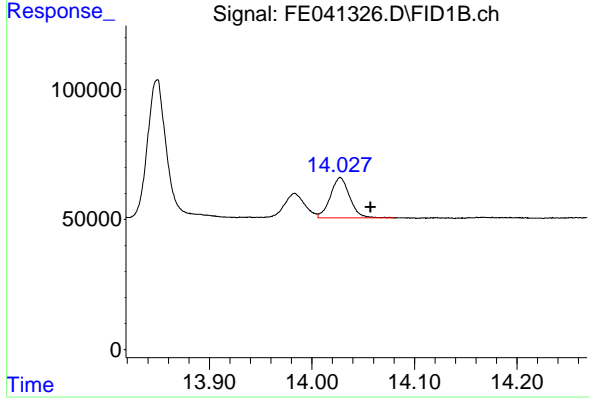
#10 n-Eicosane (C20)

R.T.: 12.831 min  
Delta R.T.: -0.028 min  
Response: 109867  
Conc: 0.64 ug/ml



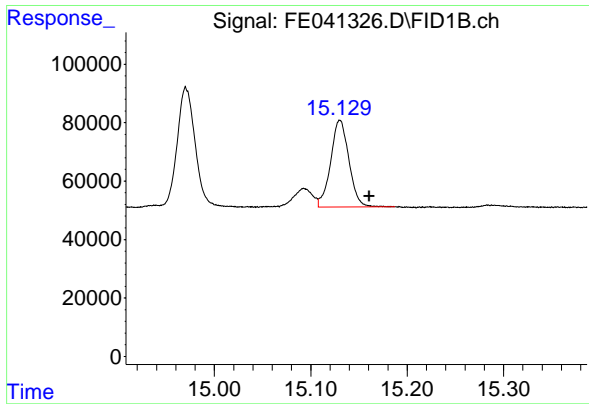
#12 1-chlorooctadecane (SURR)

R.T.: 13.278 min  
Delta R.T.: -0.024 min  
Response: 7988309  
Conc: 55.52 ug/ml



#13 n-Docosane (C22)

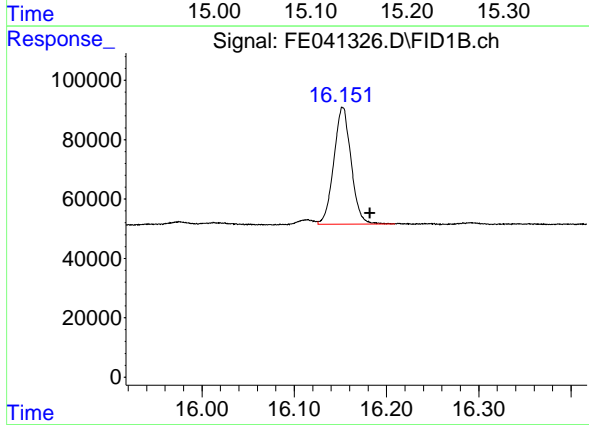
R.T.: 14.028 min  
Delta R.T.: -0.030 min  
Response: 202020  
Conc: 1.22 ug/ml



#14 n-Tetracosane (C24)

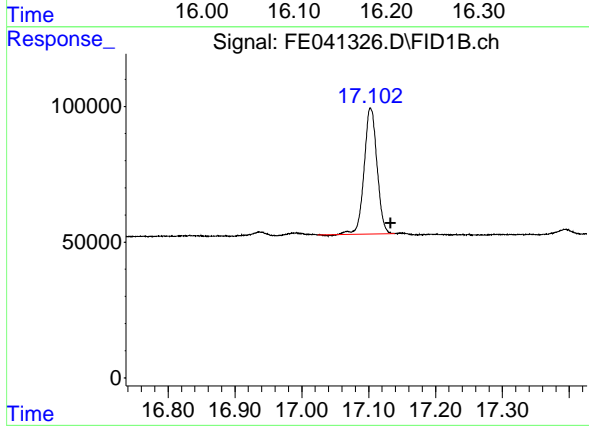
R.T.: 15.130 min  
 Delta R.T.: -0.031 min  
 Response: 392933  
 Conc: 2.43 ug/ml

Instrument :  
 FID\_E  
 ClientSampleId :



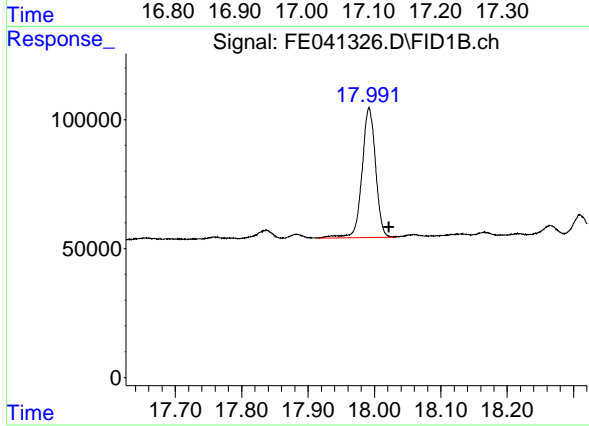
#15 n-Hexacosane (C26)

R.T.: 16.153 min  
 Delta R.T.: -0.029 min  
 Response: 513148  
 Conc: 3.31 ug/ml



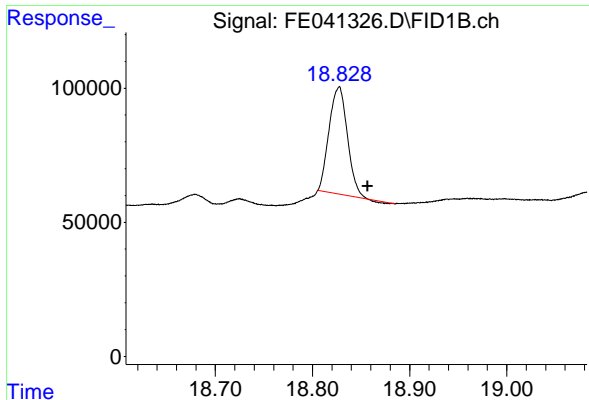
#16 n-Octacosane (C28)

R.T.: 17.103 min  
 Delta R.T.: -0.030 min  
 Response: 619357  
 Conc: 4.04 ug/ml



#17 n-Tricontane (C30)

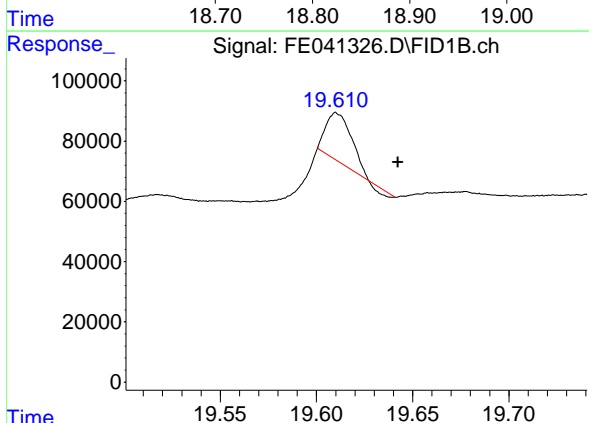
R.T.: 17.992 min  
 Delta R.T.: -0.030 min  
 Response: 713468  
 Conc: 4.67 ug/ml



#18 n-Dotriacontane (C32)

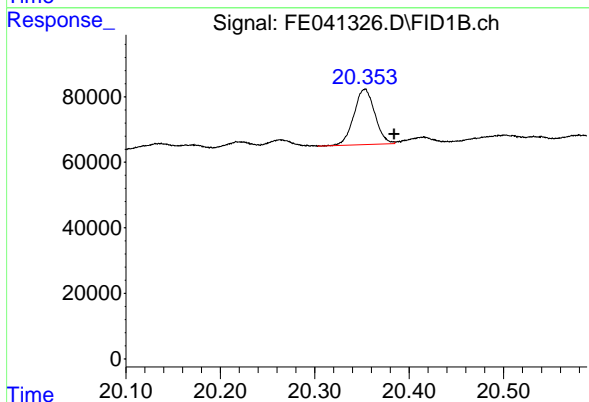
R.T.: 18.827 min  
 Delta R.T.: -0.029 min  
 Response: 518944  
 Conc: 3.32 ug/ml

Instrument :  
 FID\_E  
 ClientSampleId :



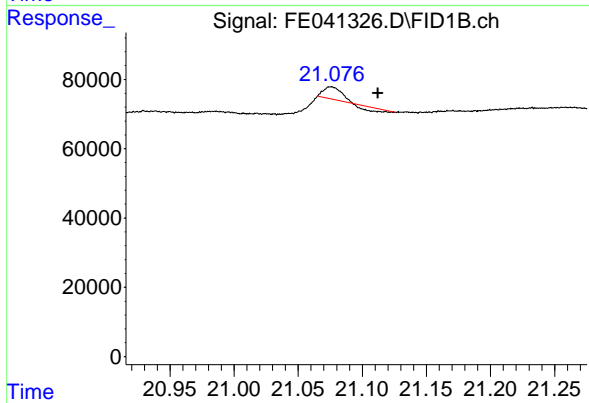
#19 n-Tetracontane (C34)

R.T.: 19.610 min  
 Delta R.T.: -0.032 min  
 Response: 142666  
 Conc: 0.92 ug/ml



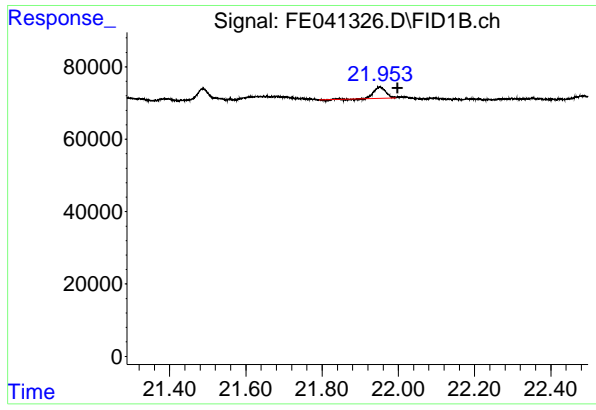
#20 n-Hexatriacontane (C36)

R.T.: 20.353 min  
 Delta R.T.: -0.031 min  
 Response: 261109  
 Conc: 1.72 ug/ml



#21 n-Octatriacontane (C38)

R.T.: 21.076 min  
 Delta R.T.: -0.036 min  
 Response: 21953  
 Conc: 0.14 ug/ml



#22 n-Tetracontane (C40)

R.T.: 21.952 min  
Delta R.T.: -0.046 min  
Response: 65422  
Conc: 0.41 ug/ml

Instrument :

FID\_E

ClientSampleId :