

Data Path : Z:\pestpcbsrv\HPCHEM1\FID\_E\Data\FE041425AL\  
 Data File : FE053355.D  
 Signal(s) : FID1B.ch  
 Acq On : 14 Apr 2025 22:34  
 Operator : YP\AJ  
 Sample : I.BLK  
 Misc :  
 ALS Vial : 1 Sample Multiplier: 1

Instrument :  
 FID\_E  
 ClientSampleId :

Integration File: autoint1.e  
 Quant Time: Apr 15 02:41:17 2025  
 Quant Method : Z:\pestpcbsrv\HPCHEM1\FID\_E\methods\Aliphatic EPH 032925.M  
 Quant Title : GC Extractables  
 QLast Update : Mon Mar 31 02:44:53 2025  
 Response via : Initial Calibration  
 Integrator: ChemStation

Volume Inj. : 1 ul  
 Signal Phase : Rxi-1ms  
 Signal Info : 20M x 0.18mm x 0.18um

Compound	R.T.	Response	Conc Units
-----			
System Monitoring Compounds			
Target Compounds			
15) T n-Hexacosane (C26)	16.236	25343	0.190 ug/ml
17) T n-Tricontane (C30)	18.079	116983	0.863 ug/ml
18) T n-Dotriacontane (C32)	18.913	201741	1.499 ug/ml
19) T n-Tetratriacontane (C34)	19.699	378877	2.928 ug/ml
20) T n-Hexatriacontane (C36)	20.443	479003	4.032 ug/ml
22) T n-Tetracontane (C40)	22.109	4926498	43.864 ug/ml
-----			

(f)=RT Delta > 1/2 Window

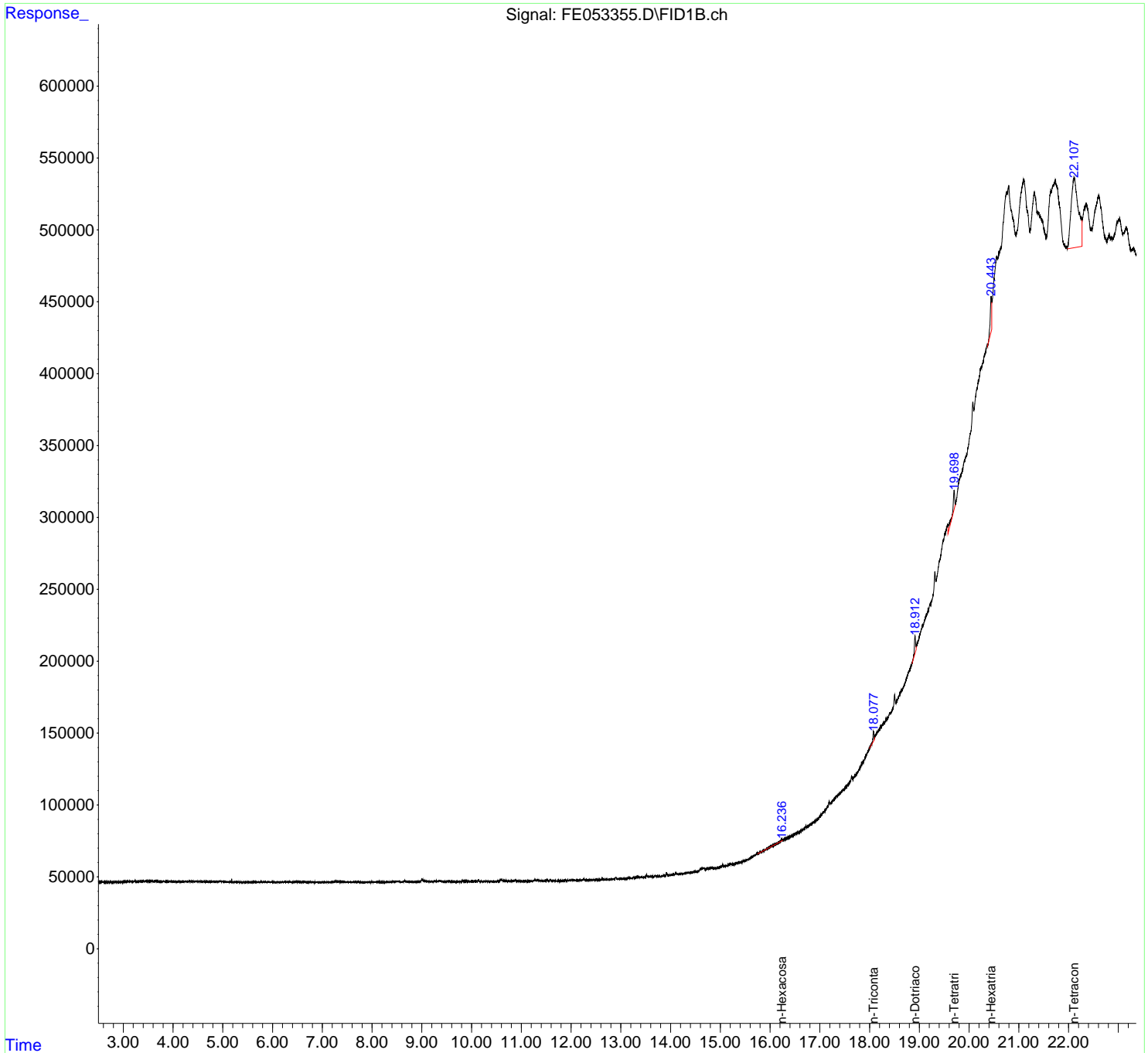
(m)=manual int.

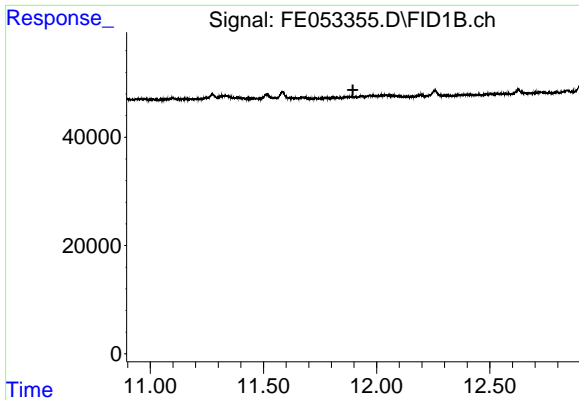
Data Path : Z:\pestpcbsrv\HPCHEM1\FID\_E\Data\FE041425AL\  
 Data File : FE053355.D  
 Signal(s) : FID1B.ch  
 Acq On : 14 Apr 2025 22:34  
 Operator : YP\AJ  
 Sample : I.BLK  
 Misc :  
 ALS Vial : 1 Sample Multiplier: 1

Instrument :  
 FID\_E  
 ClientSampleId :

Integration File: autoint1.e  
 Quant Time: Apr 15 02:41:17 2025  
 Quant Method : Z:\pestpcbsrv\HPCHEM1\FID\_E\methods\Aliphatic EPH 032925.M  
 Quant Title : GC Extractables  
 QLast Update : Mon Mar 31 02:44:53 2025  
 Response via : Initial Calibration  
 Integrator: ChemStation

Volume Inj. : 1 ul  
 Signal Phase : Rxi-1ms  
 Signal Info : 20M x 0.18mm x 0.18um

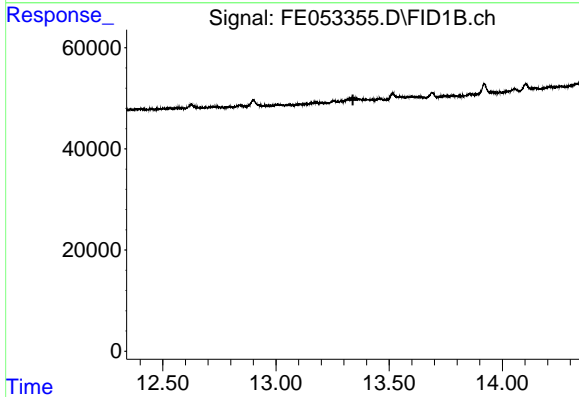




#9 ortho-Terphenyl (SURR)

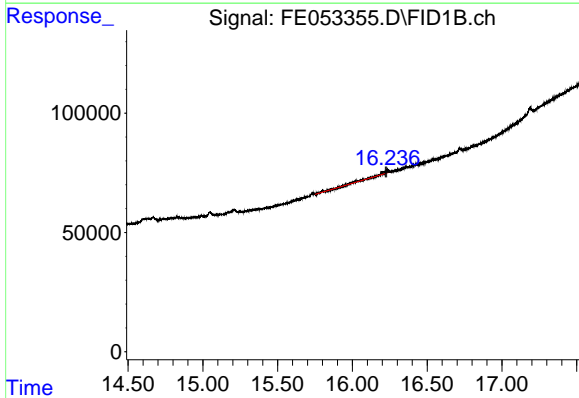
R.T.: 0.000 min  
 Exp R.T. : 11.895 min  
 Response: 0  
 Conc: N.D.

Instrument : FID\_E  
 ClientSampleId :



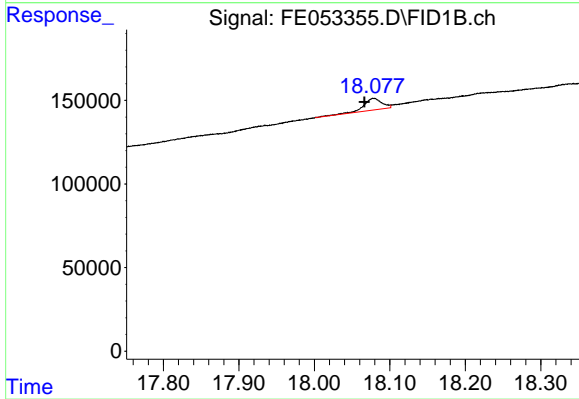
#12 1-chlorooctadecane (SURR)

R.T.: 0.000 min  
 Exp R.T. : 13.340 min  
 Response: 0  
 Conc: N.D.



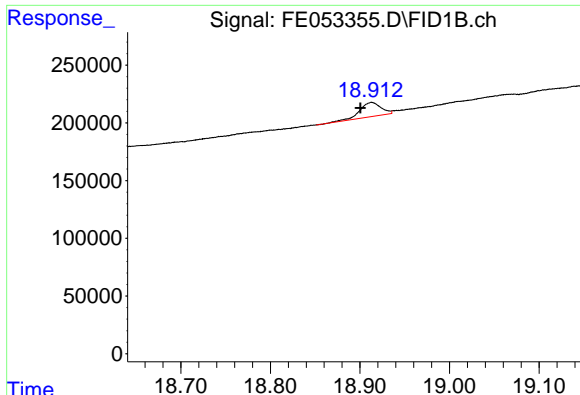
#15 n-Hexacosane (C26)

R.T.: 16.236 min  
 Delta R.T.: 0.010 min  
 Response: 25343  
 Conc: 0.19 ug/ml



#17 n-Tricontane (C30)

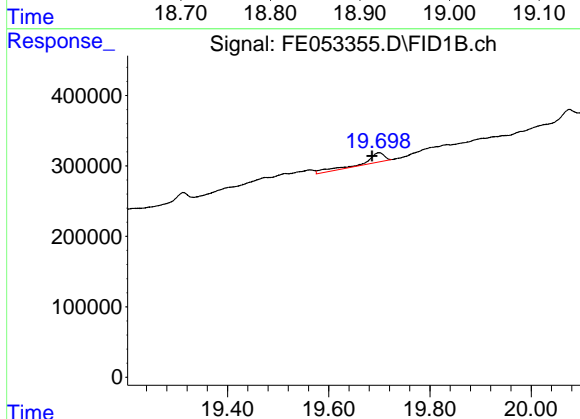
R.T.: 18.079 min  
 Delta R.T.: 0.012 min  
 Response: 116983  
 Conc: 0.86 ug/ml



#18 n-Dotriacontane (C32)

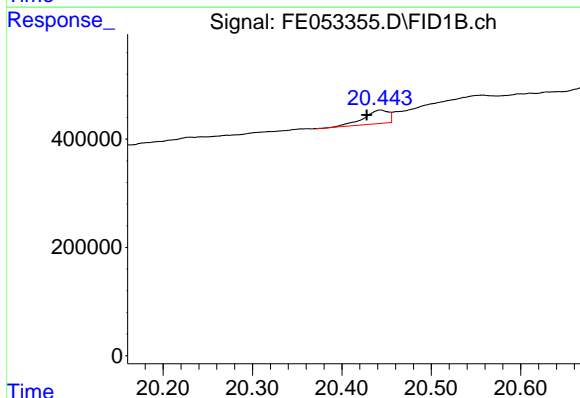
R.T.: 18.913 min  
 Delta R.T.: 0.013 min  
 Response: 201741  
 Conc: 1.50 ug/ml

Instrument :  
 FID\_E  
 ClientSampleId :



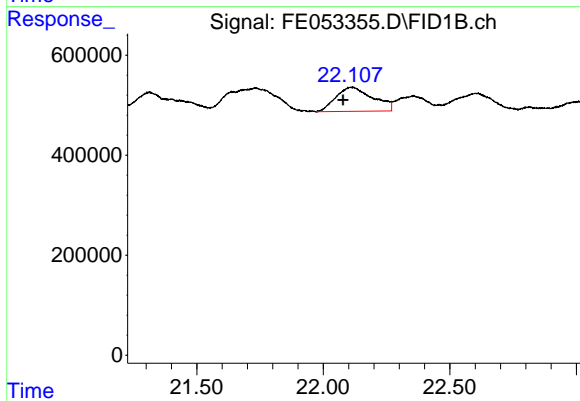
#19 n-Tetracontane (C34)

R.T.: 19.699 min  
 Delta R.T.: 0.014 min  
 Response: 378877  
 Conc: 2.93 ug/ml



#20 n-Hexatriacontane (C36)

R.T.: 20.443 min  
 Delta R.T.: 0.015 min  
 Response: 479003  
 Conc: 4.03 ug/ml



#22 n-Tetracontane (C40)

R.T.: 22.109 min  
 Delta R.T.: 0.031 min  
 Response: 4926498  
 Conc: 43.86 ug/ml