

Data Path : Z:\pestpcbsrv\HPCHEM1\FID_E\Data\FE041725AL\
 Data File : FE053393.D
 Signal(s) : FID1B.ch
 Acq On : 16 Apr 2025 19:36
 Operator : YP\AJ
 Sample : I.BLK
 Misc :
 ALS Vial : 1 Sample Multiplier: 1

Instrument :
 FID_E
 ClientSampleId :
 I.BLK

Integration File: autoint1.e
 Quant Time: Apr 17 04:39:50 2025
 Quant Method : Z:\pestpcbsrv\HPCHEM1\FID_E\methods\Aliphatic EPH 041725.M
 Quant Title : GC Extractables
 QLast Update : Wed Apr 16 18:29:18 2025
 Response via : Initial Calibration
 Integrator: ChemStation

Volume Inj. : 1 ul
 Signal Phase : Rxi-1ms
 Signal Info : 20M x 0.18mm x 0.18um

Compound	R.T.	Response	Conc Units

System Monitoring Compounds			
Target Compounds			

(f)=RT Delta > 1/2 Window

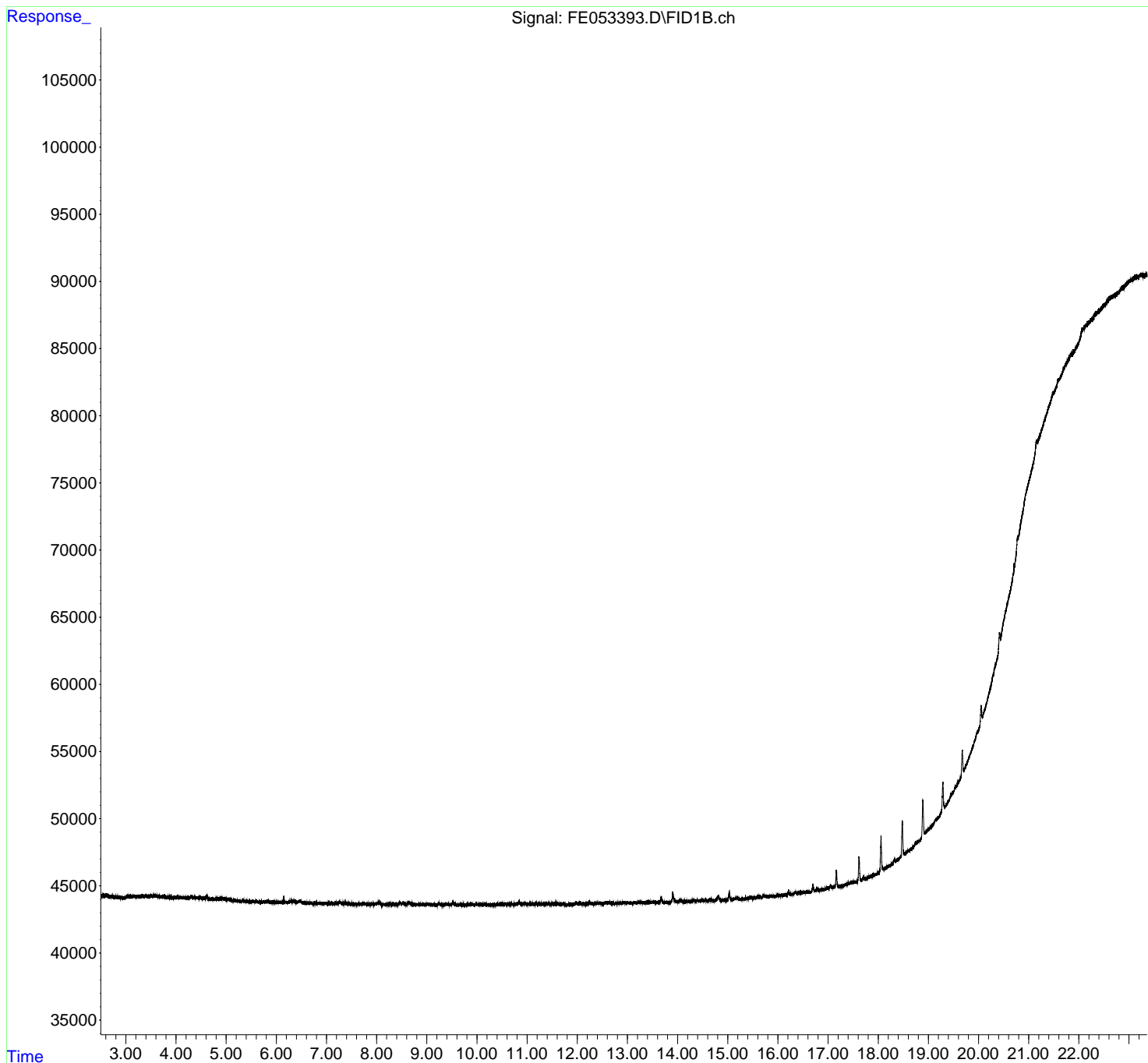
(m)=manual int.

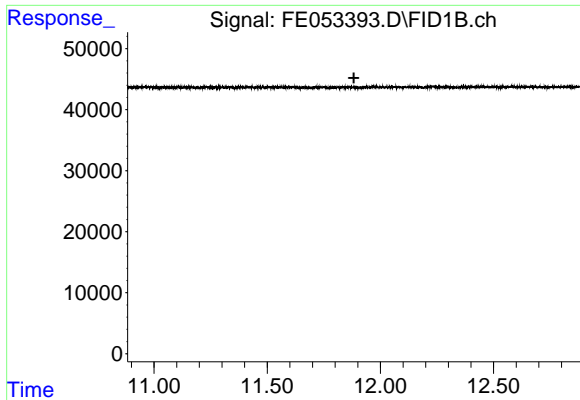
Data Path : Z:\pestpcbsrv\HPCHEM1\FID_E\Data\FE041725AL\
Data File : FE053393.D
Signal(s) : FID1B.ch
Acq On : 16 Apr 2025 19:36
Operator : YP\AJ
Sample : I.BLK
Misc :
ALS Vial : 1 Sample Multiplier: 1

Instrument :
FID_E
ClientSampleId :
I.BLK

Integration File: autoint1.e
Quant Time: Apr 17 04:39:50 2025
Quant Method : Z:\pestpcbsrv\HPCHEM1\FID_E\methods\Aliphatic EPH 041725.M
Quant Title : GC Extractables
QLast Update : Wed Apr 16 18:29:18 2025
Response via : Initial Calibration
Integrator: ChemStation

Volume Inj. : 1 ul
Signal Phase : Rxi-1ms
Signal Info : 20M x 0.18mm x 0.18um

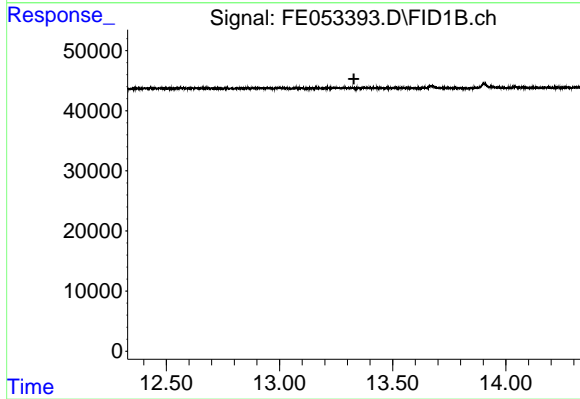




#9 ortho-Terphenyl (SURR)

R.T.: 0.000 min
 Exp R.T. : 11.883 min
 Response: 0
 Conc: N.D.

Instrument :
 FID_E
 ClientSampleId :
 I.BLK



#12 1-chlorooctadecane (SURR)

R.T.: 0.000 min
 Exp R.T. : 13.329 min
 Response: 0
 Conc: N.D.