

Data Path : Z:\pestpcbsrv\HPCHEM1\FID_E\Data\FE041923AL\
 Data File : FE041440.D
 Signal(s) : FID1B.ch
 Acq On : 19 Apr 2023 20:40
 Operator : YP\AJ
 Sample : 02389-30DL 10X
 Misc :
 ALS Vial : 28 Sample Multiplier: 1

Instrument :
 FID_E
ClientSampleId :
 SPB-8WC-23-04-17DL

Manual Integrations
APPROVED

Reviewed By :Yogesh Patel 04/20/2023
 Supervised By :Ankita Jodhani 04/20/2023

Integration File: sample.E
 Quant Time: Apr 20 02:00:09 2023
 Quant Method : Z:\pestpcbsrv\HPCHEM1\FID_E\methods\Aliphatic EPH 032523.M
 Quant Title : GC Extractables
 QLast Update : Sat Mar 25 06:32:15 2023
 Response via : Initial Calibration
 Integrator: ChemStation

Volume Inj. : 1 ul
 Signal Phase : Rxi-1ms
 Signal Info : 20M x 0.18mm x 0.18um

Compound	R.T.	Response	Conc Units

System Monitoring Compounds			
9) S ortho-Terphenyl (SURR)	11.831	352767	1.877 ug/mlm
Spiked Amount	50.000	Recovery =	3.75%
12) S 1-chlorooctadecane (S...	13.270	334416	2.324 ug/mlm
Spiked Amount	50.000	Recovery =	4.65%

Target Compounds

(f)=RT Delta > 1/2 Window

(m)=manual int.

Data Path : Z:\pestpcbsrv\HPCHEM1\FID_E\Data\FE041923AL\
 Data File : FE041440.D
 Signal(s) : FID1B.ch
 Acq On : 19 Apr 2023 20:40
 Operator : YP\AJ
 Sample : 02389-30DL 10X
 Misc :
 ALS Vial : 28 Sample Multiplier: 1

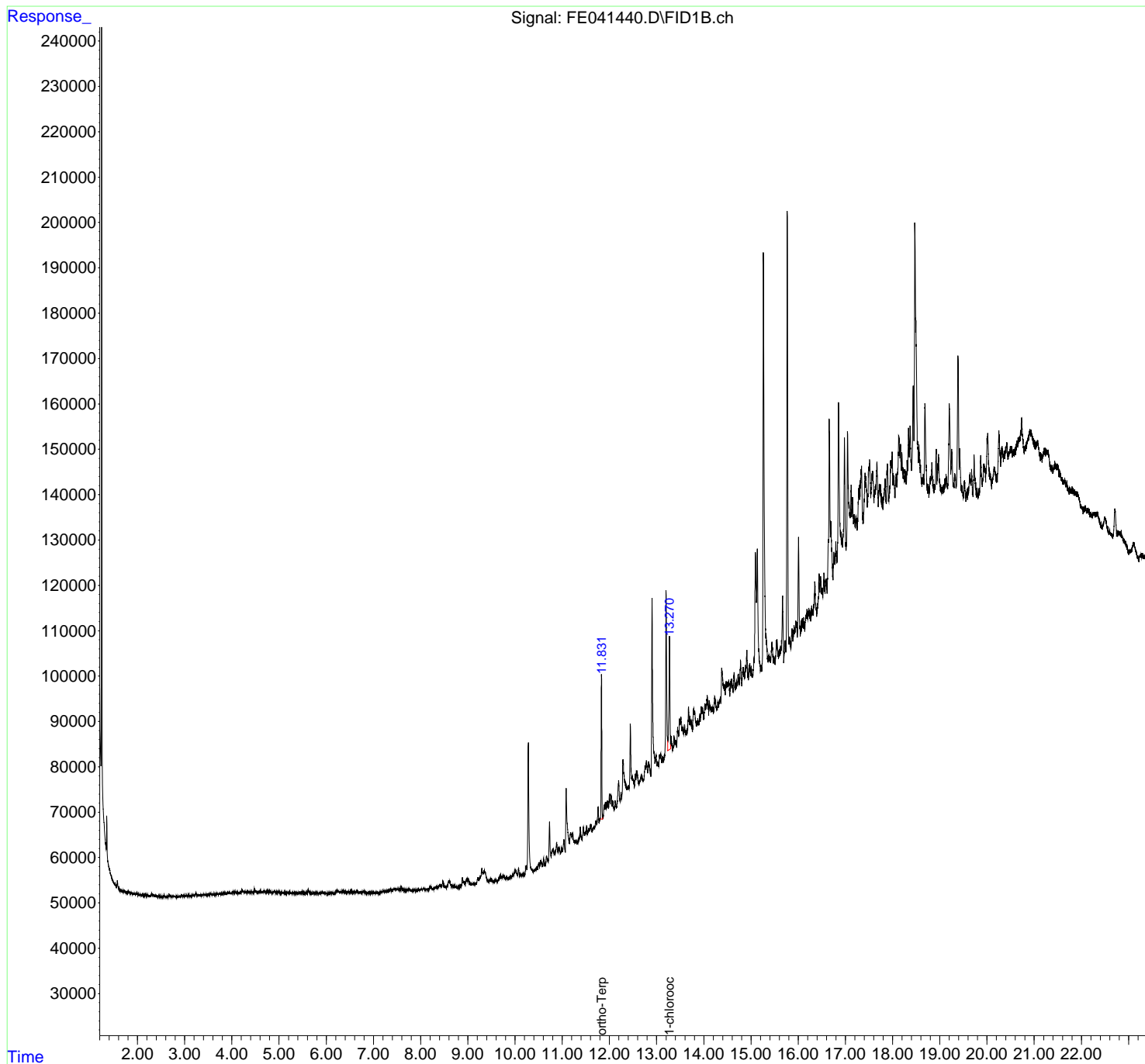
Instrument :
 FID_E
ClientSampleId :
 SPB-8WC-23-04-17DL

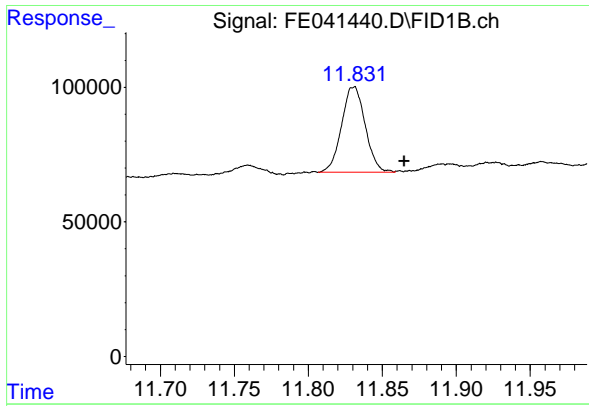
Manual Integrations
APPROVED

Reviewed By :Yogesh Patel 04/20/2023
 Supervised By :Ankita Jodhani 04/20/2023

Integration File: sample.E
 Quant Time: Apr 20 02:00:09 2023
 Quant Method : Z:\pestpcbsrv\HPCHEM1\FID_E\methods\Aliphatic EPH 032523.
 Quant Title : GC Extractables
 QLast Update : Sat Mar 25 06:32:15 2023
 Response via : Initial Calibration
 Integrator: ChemStation

Volume Inj. : 1 ul
 Signal Phase : Rxi-1ms
 Signal Info : 20M x 0.18mm x 0.18um





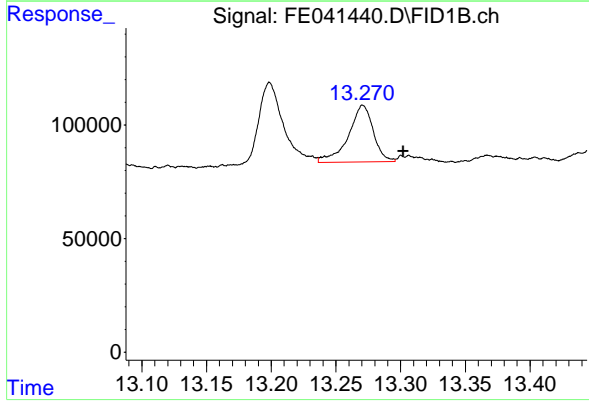
#9 ortho-Terphenyl (SURRE)

R.T.: 11.831 min
 Delta R.T.: -0.034 min
 Response: 352767
 Conc: 1.88 ug/ml

Instrument : FID_E
 Client Sample Id : SPB-8WC-23-04-17DL

Manual Integrations
 APPROVED

Reviewed By :Yogesh Patel 04/20/2023
 Supervised By :Ankita Jodhani 04/20/2023



#12 1-chlorooctadecane (SURRE)

R.T.: 13.270 min
 Delta R.T.: -0.032 min
 Response: 334416
 Conc: 2.32 ug/ml m