

Data Path : Z:\pestpcbsrv\HPCHEM1\FID\_E\Data\FE041925AL\  
 Data File : FE053413.D  
 Signal(s) : FID1B.ch  
 Acq On : 18 Apr 2025 14:21  
 Operator : YP\AJ  
 Sample : Q1830-04  
 Misc :  
 ALS Vial : 14 Sample Multiplier: 1

Instrument :  
 FID\_E  
 ClientSampleId :  
 SOIL-1C

Integration File: autoint1.e  
 Quant Time: Apr 19 03:49:28 2025  
 Quant Method : Z:\pestpcbsrv\HPCHEM1\FID\_E\methods\Aliphatic EPH 041725.M  
 Quant Title : GC Extractables  
 QLast Update : Wed Apr 16 18:29:18 2025  
 Response via : Initial Calibration  
 Integrator: ChemStation

Volume Inj. : 1 ul  
 Signal Phase : Rxi-1ms  
 Signal Info : 20M x 0.18mm x 0.18um

Compound	R.T.	Response	Conc Units
-----			
System Monitoring Compounds			
9) S ortho-Terphenyl (SURR)	11.881	6173703	34.230 ug/ml
Spiked Amount	50.000	Recovery	= 68.46%
12) S 1-chlorooctadecane (S...	13.325	5419895	40.095 ug/ml
Spiked Amount	50.000	Recovery	= 80.19%
Target Compounds			
7) T n-Hexadecane (C16)	10.125	212868	1.485 ug/ml
10) T n-Eicosane (C20)	12.883	232333	1.597 ug/ml
11) T n-Heneicosane (C21)	13.511	379835	2.622 ug/ml
13) T n-Docosane (C22)	14.105	692522	4.799 ug/ml
14) T n-Tetracosane (C24)	15.164	1845233	12.846 ug/ml
16) T n-Octacosane (C28)	17.171	473690	3.405 ug/ml
17) T n-Tricontane (C30)	18.049	166027	1.193 ug/ml
18) T n-Dotriacontane (C32)	18.841f	35324	0.257 ug/ml
-----			

(f)=RT Delta > 1/2 Window

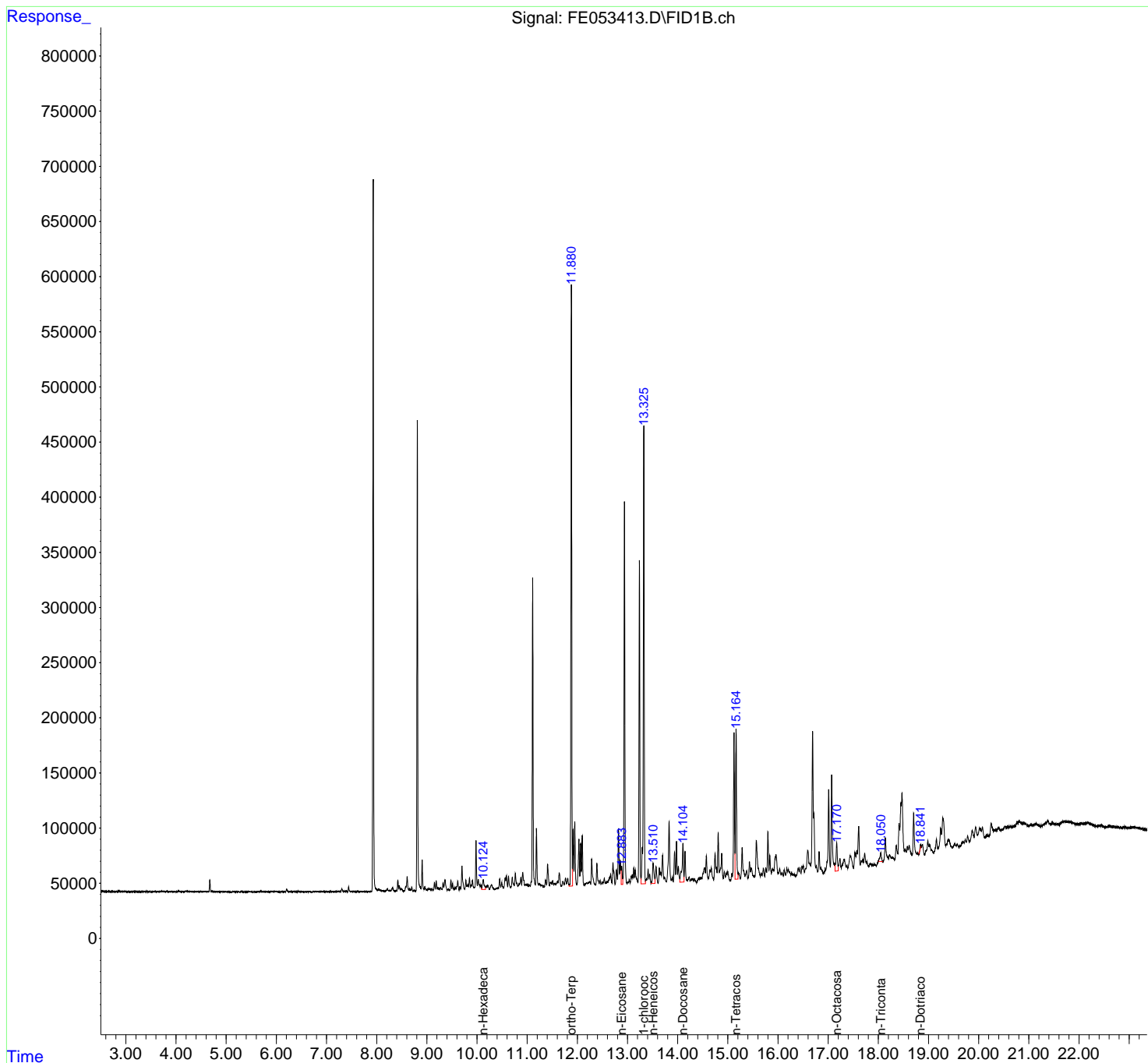
(m)=manual int.

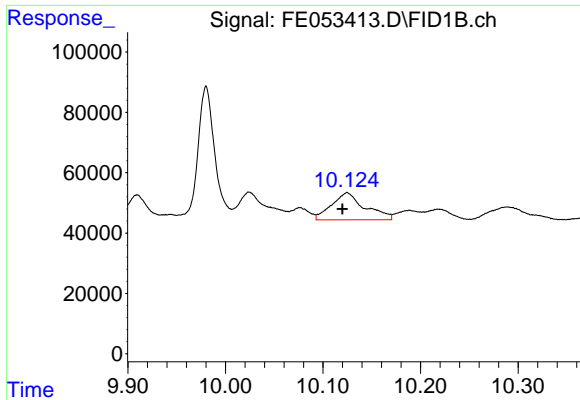
Data Path : Z:\pestpcbsrv\HPCHEM1\FID\_E\Data\FE041925AL\  
 Data File : FE053413.D  
 Signal(s) : FID1B.ch  
 Acq On : 18 Apr 2025 14:21  
 Operator : YP\AJ  
 Sample : Q1830-04  
 Misc :  
 ALS Vial : 14 Sample Multiplier: 1

Instrument :  
 FID\_E  
 ClientSampleId :  
 SOIL-1C

Integration File: autoint1.e  
 Quant Time: Apr 19 03:49:28 2025  
 Quant Method : Z:\pestpcbsrv\HPCHEM1\FID\_E\methods\Aliphatic EPH 041725.M  
 Quant Title : GC Extractables  
 QLast Update : Wed Apr 16 18:29:18 2025  
 Response via : Initial Calibration  
 Integrator: ChemStation

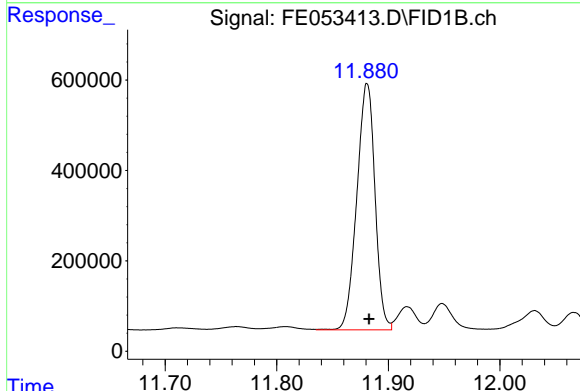
Volume Inj. : 1 ul  
 Signal Phase : Rxi-1ms  
 Signal Info : 20M x 0.18mm x 0.18um



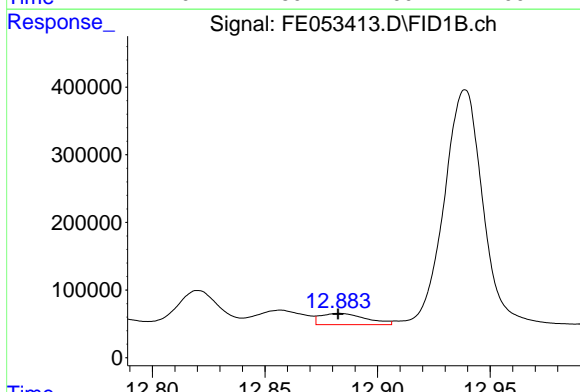


#7 n-Hexadecane (C16)  
 R.T.: 10.125 min  
 Delta R.T.: 0.005 min  
 Response: 212868  
 Conc: 1.49 ug/ml

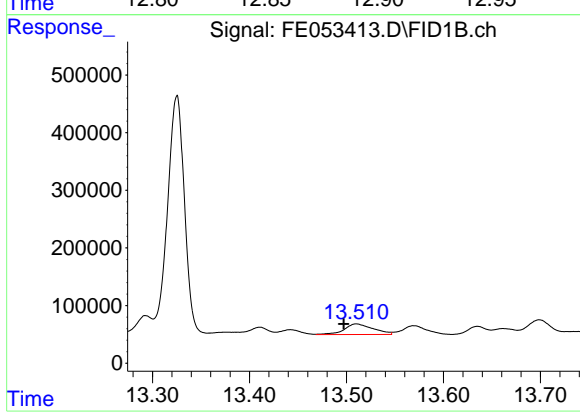
Instrument : FID\_E  
 ClientSampleId : SOIL-1C



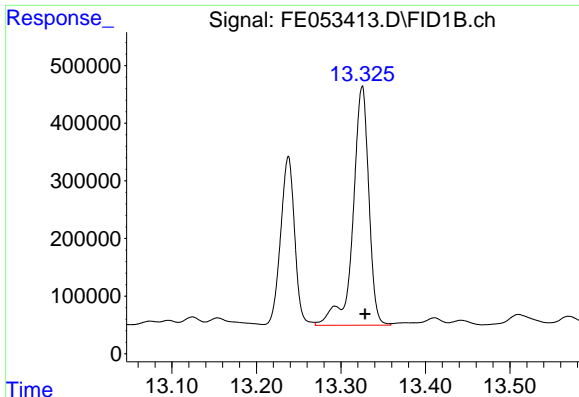
#9 ortho-Terphenyl (SURR)  
 R.T.: 11.881 min  
 Delta R.T.: -0.002 min  
 Response: 6173703  
 Conc: 34.23 ug/ml



#10 n-Eicosane (C20)  
 R.T.: 12.883 min  
 Delta R.T.: 0.000 min  
 Response: 232333  
 Conc: 1.60 ug/ml



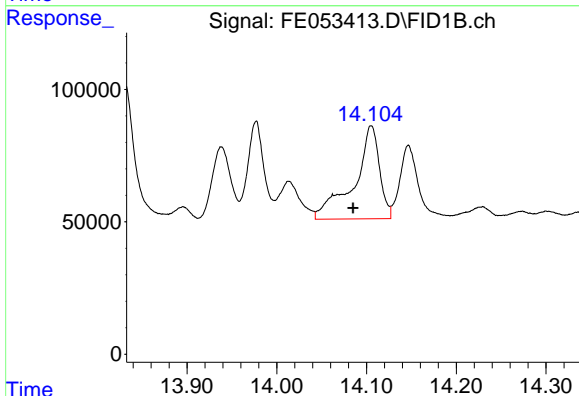
#11 n-Heneicosane (C21)  
 R.T.: 13.511 min  
 Delta R.T.: 0.013 min  
 Response: 379835  
 Conc: 2.62 ug/ml



#12 1-chlorooctadecane (SURR)

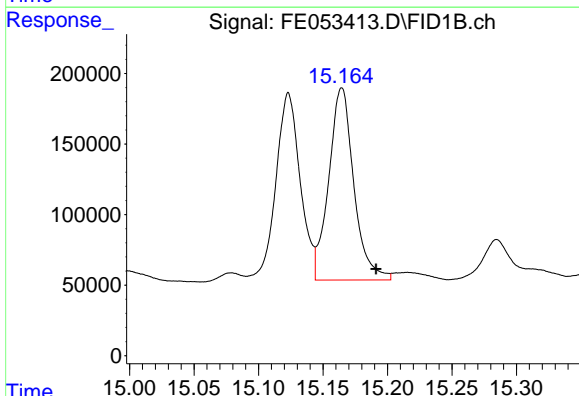
R.T.: 13.325 min  
 Delta R.T.: -0.004 min  
 Response: 5419895  
 Conc: 40.10 ug/ml

Instrument :  
 FID\_E  
 ClientSampleId :  
 SOIL-1C



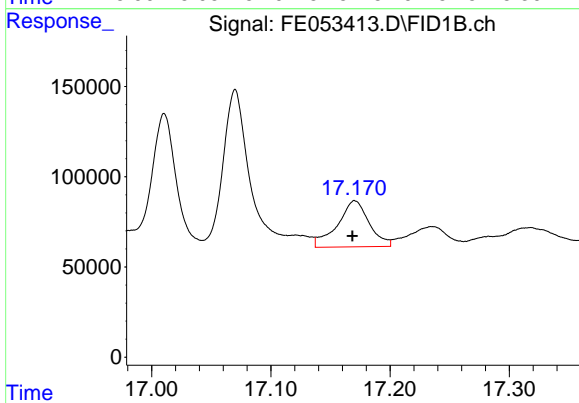
#13 n-Docosane (C22)

R.T.: 14.105 min  
 Delta R.T.: 0.020 min  
 Response: 692522  
 Conc: 4.80 ug/ml



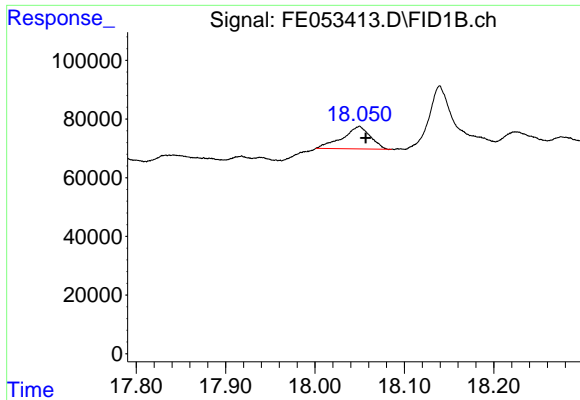
#14 n-Tetracosane (C24)

R.T.: 15.164 min  
 Delta R.T.: -0.027 min  
 Response: 1845233  
 Conc: 12.85 ug/ml



#16 n-Octacosane (C28)

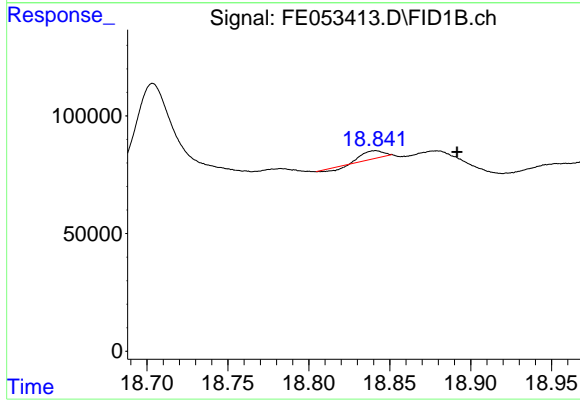
R.T.: 17.171 min  
 Delta R.T.: 0.002 min  
 Response: 473690  
 Conc: 3.40 ug/ml



#17 n-Tricontane (C30)

R.T.: 18.049 min  
 Delta R.T.: -0.008 min  
 Response: 166027  
 Conc: 1.19 ug/ml

Instrument :  
 FID\_E  
 ClientSampleId :  
 SOIL-1C



#18 n-Dotriacontane (C32)

R.T.: 18.841 min  
 Delta R.T.: -0.050 min  
 Response: 35324  
 Conc: 0.26 ug/ml