

Data Path : Z:\pestpcbsrv\HPCHEM1\FID_E\Data\FE042225AL\
 Data File : FE053458.D
 Signal(s) : FID1B.ch
 Acq On : 22 Apr 2025 09:38
 Operator : YP\AJ
 Sample : Q1832-34DL 10X
 Misc :
 ALS Vial : 11 Sample Multiplier: 1

Instrument :
 FID_E
 ClientSampleId :

Integration File: autoint1.e
 Quant Time: Apr 22 10:40:55 2025
 Quant Method : Z:\pestpcbsrv\HPCHEM1\FID_E\methods\Aliphatic EPH 041725.M
 Quant Title : GC Extractables
 QLast Update : Wed Apr 16 18:29:18 2025
 Response via : Initial Calibration
 Integrator: ChemStation

Volume Inj. : 1 ul
 Signal Phase : Rxi-1ms
 Signal Info : 20M x 0.18mm x 0.18um

Compound	R.T.	Response	Conc Units

System Monitoring Compounds			
9) S ortho-Terphenyl (SURR)	11.874	507361	2.813 ug/ml
Spiked Amount	50.000	Recovery =	5.63%
12) S 1-chlorooctadecane (S...	13.321	869390	6.432 ug/ml
Spiked Amount	50.000	Recovery =	12.86%
Target Compounds			
10) T n-Eicosane (C20)	12.882	309406	2.126 ug/ml
11) T n-Heneicosane (C21)	13.507	434719	3.001 ug/ml
13) T n-Docosane (C22)	14.103	892859	6.187 ug/ml
14) T n-Tetracosane (C24)	15.162	2525885	17.585 ug/ml
16) T n-Octacosane (C28)	17.169	393761	2.830 ug/ml
18) T n-Dotriacontane (C32)	18.837f	86617	0.631 ug/ml

(f)=RT Delta > 1/2 Window

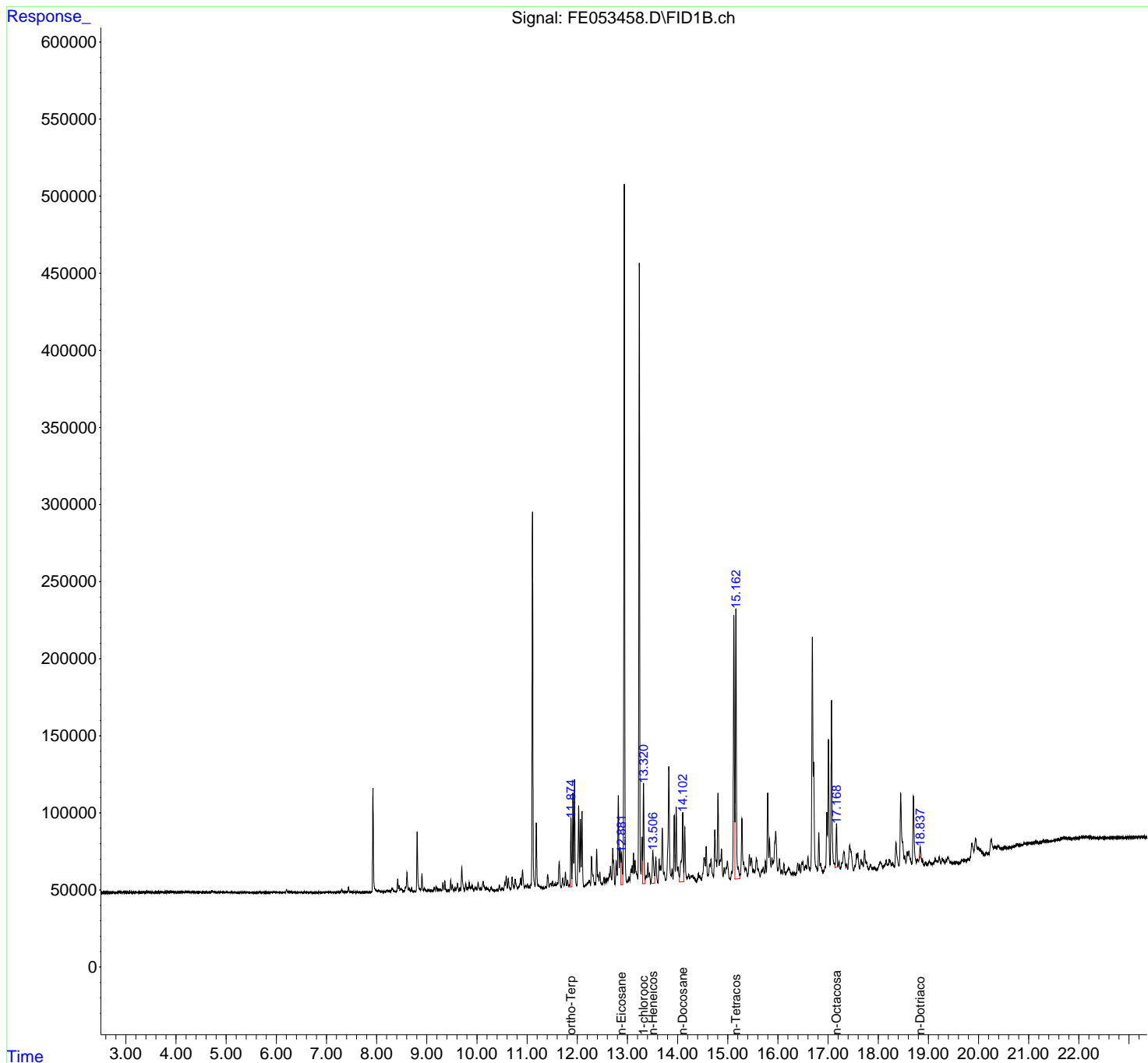
(m)=manual int.

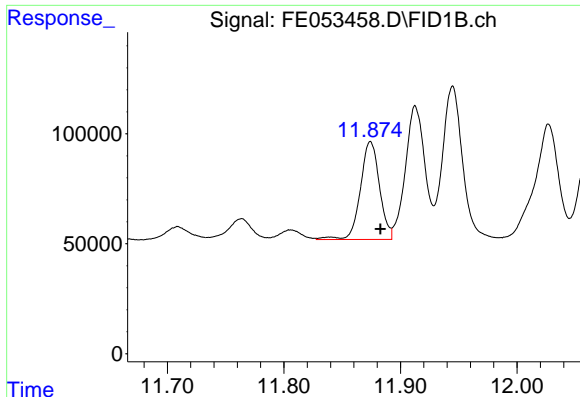
Data Path : Z:\pestpcbsrv\HPCHEM1\FID_E\Data\FE042225AL\
 Data File : FE053458.D
 Signal(s) : FID1B.ch
 Acq On : 22 Apr 2025 09:38
 Operator : YP\AJ
 Sample : Q1832-34DL 10X
 Misc :
 ALS Vial : 11 Sample Multiplier: 1

Instrument :
 FID_E
 ClientSampleId :

Integration File: autoint1.e
 Quant Time: Apr 22 10:40:55 2025
 Quant Method : Z:\pestpcbsrv\HPCHEM1\FID_E\methods\Aliphatic EPH 041725.M
 Quant Title : GC Extractables
 QLast Update : Wed Apr 16 18:29:18 2025
 Response via : Initial Calibration
 Integrator: ChemStation

Volume Inj. : 1 ul
 Signal Phase : Rxi-1ms
 Signal Info : 20M x 0.18mm x 0.18um

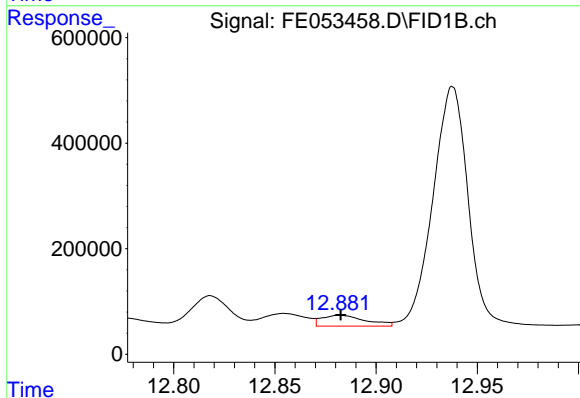




#9 ortho-Terphenyl (SURR)

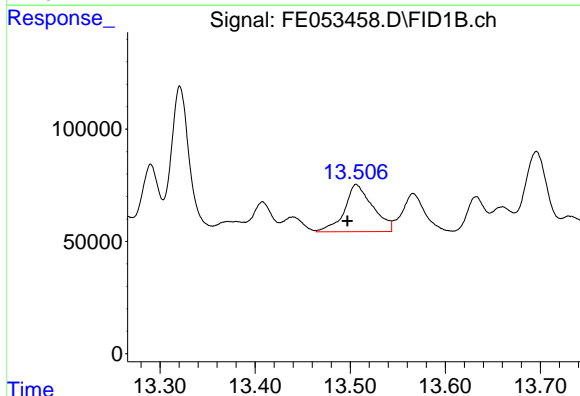
R.T.: 11.874 min
 Delta R.T.: -0.008 min
 Response: 507361
 Conc: 2.81 ug/ml

Instrument :
 FID_E
 ClientSampleId :



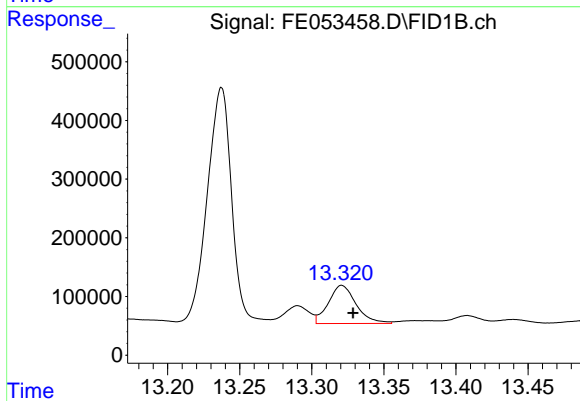
#10 n-Eicosane (C20)

R.T.: 12.882 min
 Delta R.T.: 0.000 min
 Response: 309406
 Conc: 2.13 ug/ml



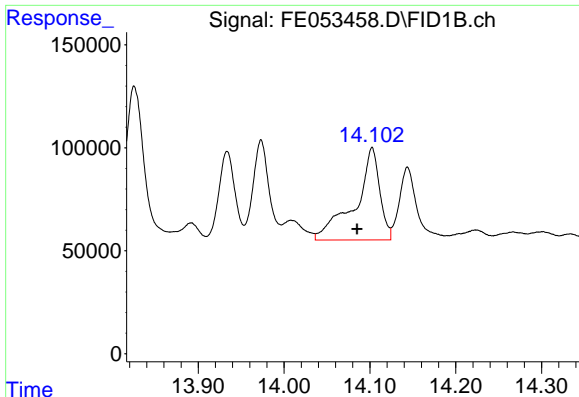
#11 n-Heneicosane (C21)

R.T.: 13.507 min
 Delta R.T.: 0.010 min
 Response: 434719
 Conc: 3.00 ug/ml



#12 1-chlorooctadecane (SURR)

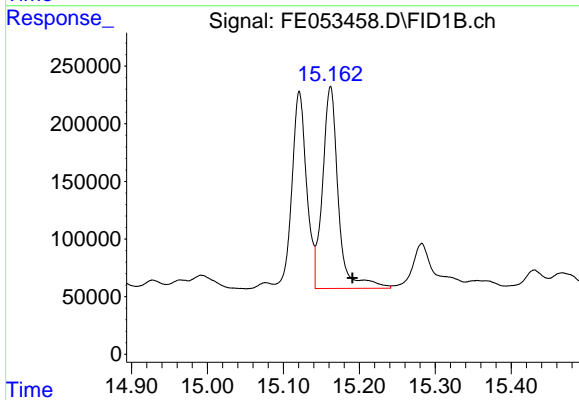
R.T.: 13.321 min
 Delta R.T.: -0.008 min
 Response: 869390
 Conc: 6.43 ug/ml



#13 n-Docosane (C22)

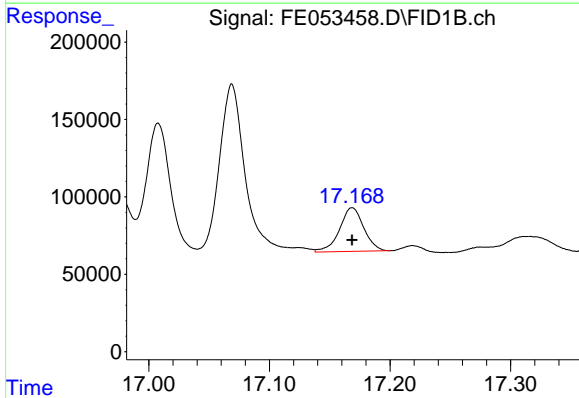
R.T.: 14.103 min
Delta R.T.: 0.017 min
Response: 892859
Conc: 6.19 ug/ml

Instrument :
FID_E
ClientSampleId :



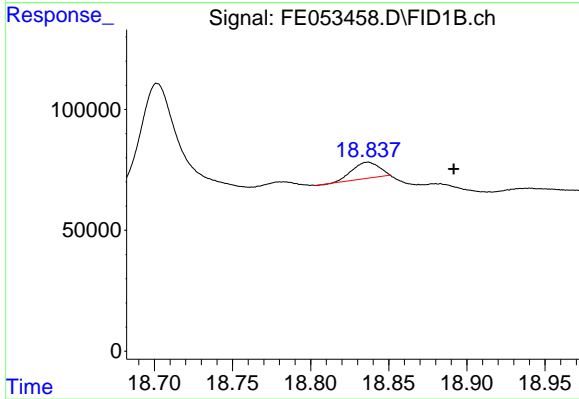
#14 n-Tetracosane (C24)

R.T.: 15.162 min
Delta R.T.: -0.029 min
Response: 2525885
Conc: 17.58 ug/ml



#16 n-Octacosane (C28)

R.T.: 17.169 min
Delta R.T.: 0.000 min
Response: 393761
Conc: 2.83 ug/ml



#18 n-Dotriacontane (C32)

R.T.: 18.837 min
Delta R.T.: -0.055 min
Response: 86617
Conc: 0.63 ug/ml