

Data Path : Z:\pestpcbsrv\HPCHEM1\FID_E\Data\FE043024AL\
 Data File : FE047880.D
 Signal(s) : FID1B.ch
 Acq On : 30 Apr 2024 15:29
 Operator : YP\AJ
 Sample : P2310-03
 Misc :
 ALS Vial : 8 Sample Multiplier: 1

Instrument :
 FID_E
 ClientSampleId :
 SU-03-042924

Integration File: autoint1.e
 Quant Time: Apr 30 15:53:41 2024
 Quant Method : Z:\pestpcbsrv\HPCHEM1\FID_E\methods\Aliphatic EPH 042724.M
 Quant Title : GC Extractables
 QLast Update : Mon Apr 29 03:29:12 2024
 Response via : Initial Calibration
 Integrator: ChemStation

Volume Inj. : 1 ul
 Signal Phase : Rxi-1ms
 Signal Info : 20M x 0.18mm x 0.18um

Compound	R.T.	Response	Conc Units

System Monitoring Compounds			
9) S ortho-Terphenyl (SURR)	11.974	4398302	30.488 ug/ml
Spiked Amount	50.000	Recovery	= 60.98%
12) S 1-chlorooctadecane (S...	13.408	3698168	33.096 ug/ml
Spiked Amount	50.000	Recovery	= 66.19%

Target Compounds

(f)=RT Delta > 1/2 Window

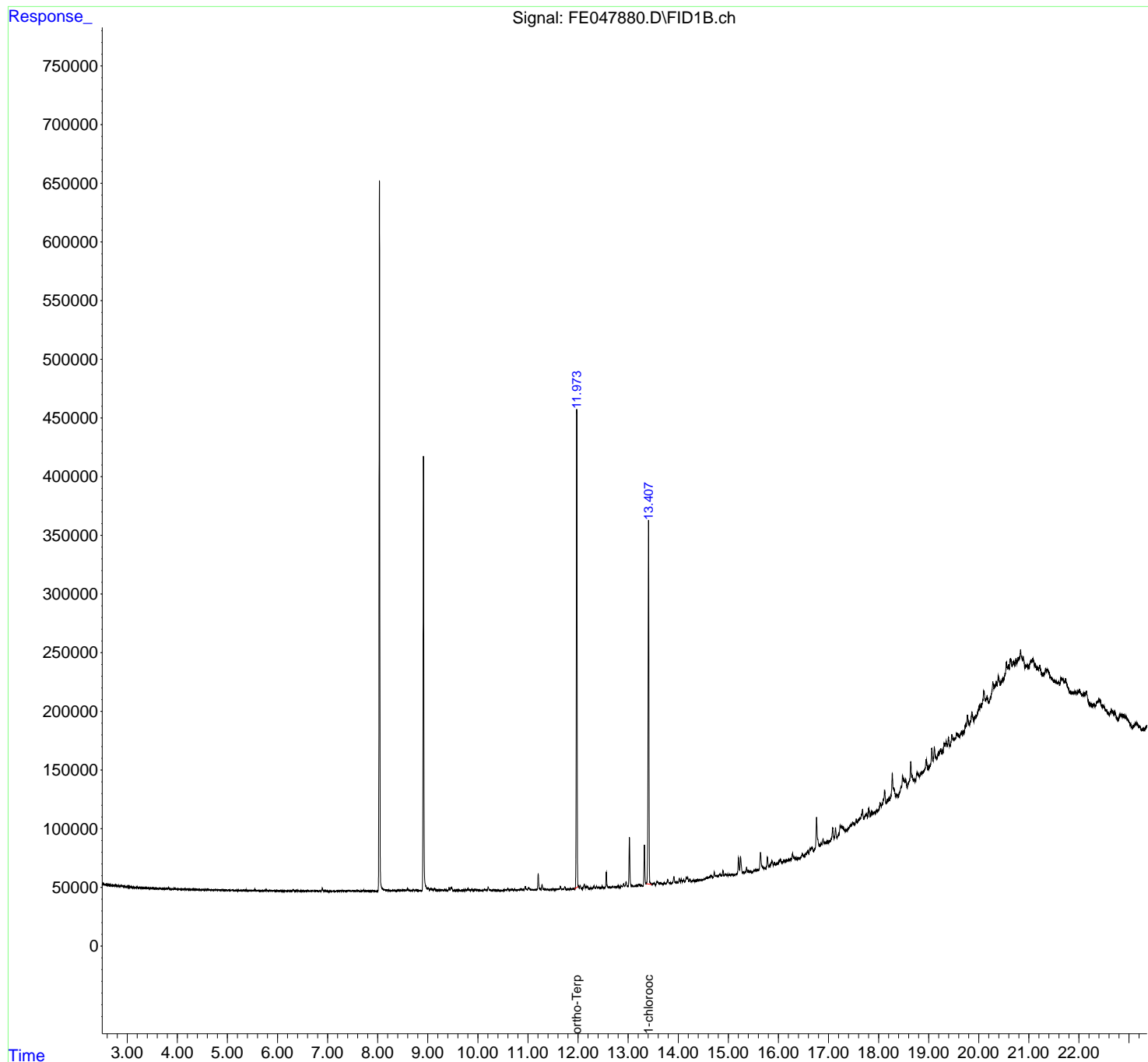
(m)=manual int.

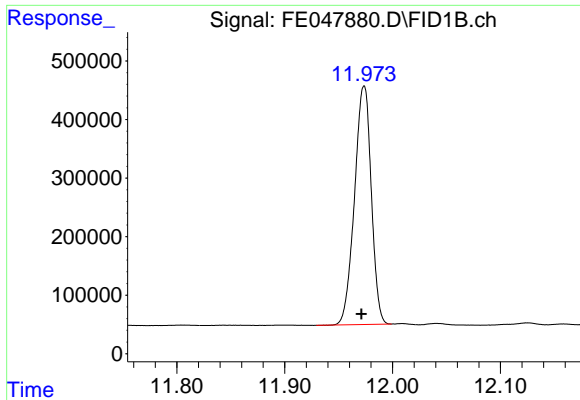
Data Path : Z:\pestpcbsrv\HPCHEM1\FID_E\Data\FE043024AL\
 Data File : FE047880.D
 Signal(s) : FID1B.ch
 Acq On : 30 Apr 2024 15:29
 Operator : YP\AJ
 Sample : P2310-03
 Misc :
 ALS Vial : 8 Sample Multiplier: 1

Instrument :
 FID_E
 ClientSampleId :
 SU-03-042924

Integration File: autoint1.e
 Quant Time: Apr 30 15:53:41 2024
 Quant Method : Z:\pestpcbsrv\HPCHEM1\FID_E\methods\Aliphatic EPH 042724.M
 Quant Title : GC Extractables
 QLast Update : Mon Apr 29 03:29:12 2024
 Response via : Initial Calibration
 Integrator: ChemStation

Volume Inj. : 1 ul
 Signal Phase : Rxi-1ms
 Signal Info : 20M x 0.18mm x 0.18um

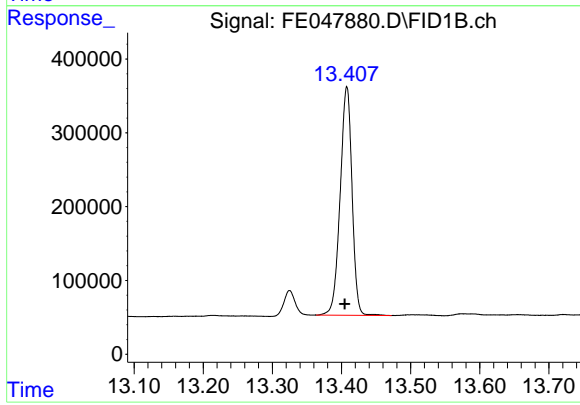




#9 ortho-Terphenyl (SURR)

R.T.: 11.974 min
Delta R.T.: 0.003 min
Response: 4398302
Conc: 30.49 ug/ml

Instrument :
FID_E
ClientSampleId :
SU-03-042924



#12 1-chlorooctadecane (SURR)

R.T.: 13.408 min
Delta R.T.: 0.003 min
Response: 3698168
Conc: 33.10 ug/ml