

Data Path : Z:\pestpcbsrv\HPCHEM1\FID_E\Data\FE043025AL\
 Data File : FE053584.D
 Signal(s) : FID1B.ch
 Acq On : 30 Apr 2025 13:42
 Operator : YP\AJ
 Sample : PB167797BL
 Misc :
 ALS Vial : 11 Sample Multiplier: 1

Instrument :
 FID_E
 ClientSampleId :
 PB167797BL

Integration File: autoint1.e
 Quant Time: May 01 01:46:22 2025
 Quant Method : Z:\pestpcbsrv\HPCHEM1\FID_E\methods\Aliphatic EPH 041725.M
 Quant Title : GC Extractables
 QLast Update : Tue Apr 29 06:49:03 2025
 Response via : Initial Calibration
 Integrator: ChemStation

Volume Inj. : 1 ul
 Signal Phase : Rxi-1ms
 Signal Info : 20M x 0.18mm x 0.18um

Compound	R.T.	Response	Conc Units

System Monitoring Compounds			
9) S ortho-Terphenyl (SURR)	11.871	5968601	33.092 ug/ml
Spiked Amount	50.000	Recovery	= 66.18%
12) S 1-chlorooctadecane (S...	13.316	4566567	33.782 ug/ml
Spiked Amount	50.000	Recovery	= 67.56%

Target Compounds

(f)=RT Delta > 1/2 Window

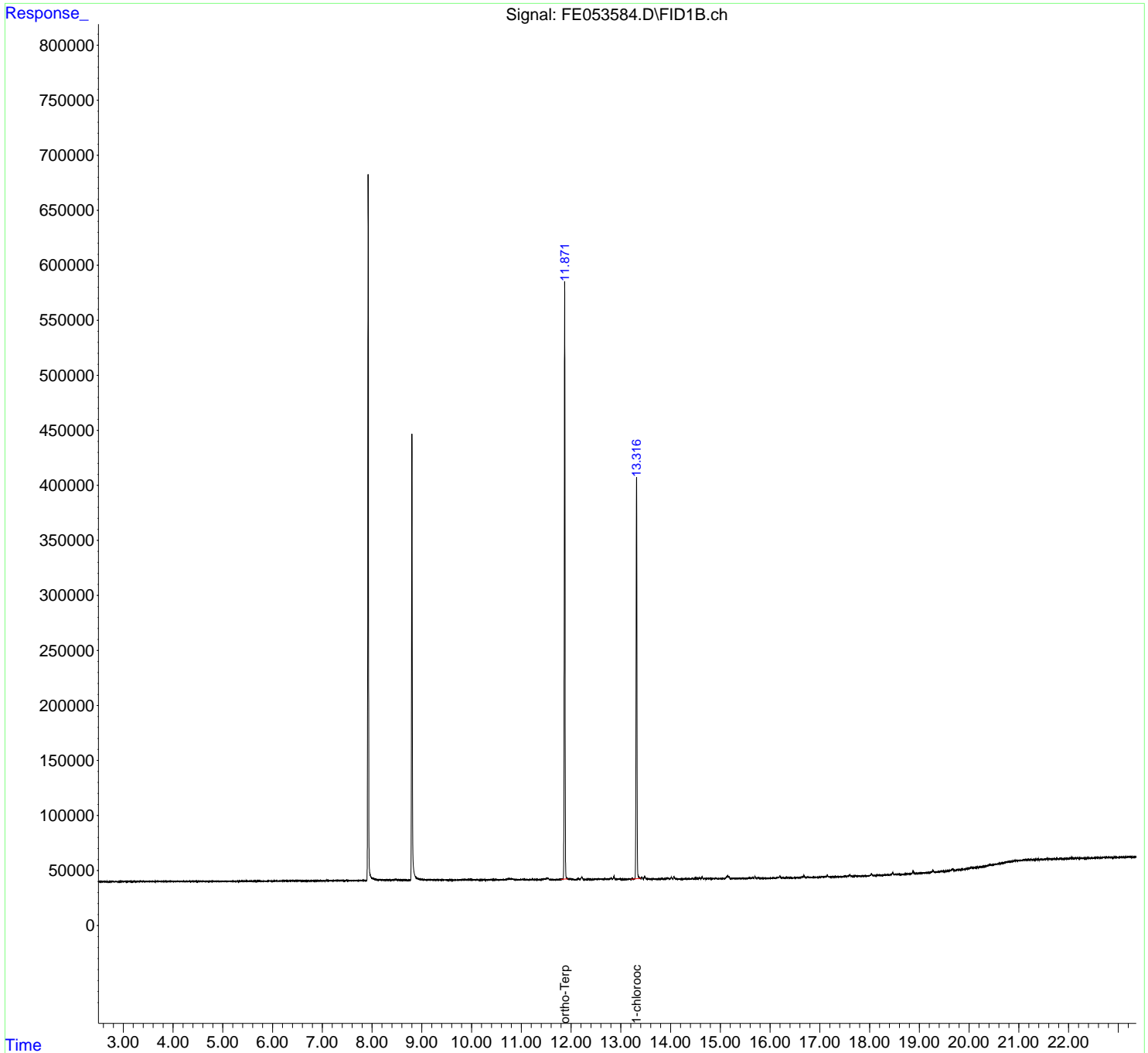
(m)=manual int.

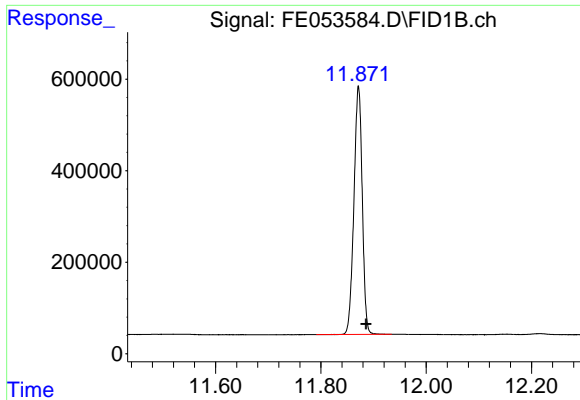
Data Path : Z:\pestpcbsrv\HPCHEM1\FID_E\Data\FE043025AL\
 Data File : FE053584.D
 Signal(s) : FID1B.ch
 Acq On : 30 Apr 2025 13:42
 Operator : YP\AJ
 Sample : PB167797BL
 Misc :
 ALS Vial : 11 Sample Multiplier: 1

Instrument :
 FID_E
 ClientSampleId :
 PB167797BL

Integration File: autoint1.e
 Quant Time: May 01 01:46:22 2025
 Quant Method : Z:\pestpcbsrv\HPCHEM1\FID_E\methods\Aliphatic EPH 041725.M
 Quant Title : GC Extractables
 QLast Update : Tue Apr 29 06:49:03 2025
 Response via : Initial Calibration
 Integrator: ChemStation

Volume Inj. : 1 ul
 Signal Phase : Rxi-1ms
 Signal Info : 20M x 0.18mm x 0.18um

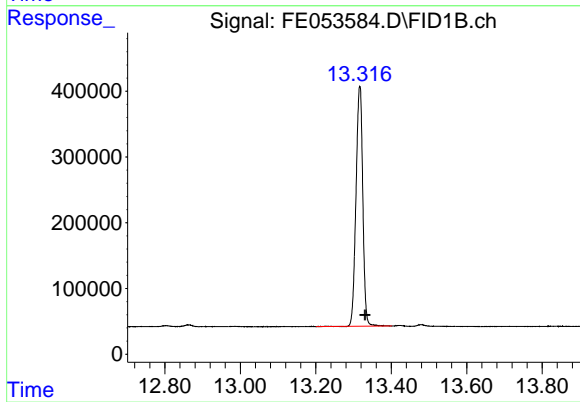




#9 ortho-Terphenyl (SURR)

R.T.: 11.871 min
Delta R.T.: -0.014 min
Response: 5968601
Conc: 33.09 ug/ml

Instrument :
FID_E
ClientSampleId :
PB167797BL



#12 1-chlorooctadecane (SURR)

R.T.: 13.316 min
Delta R.T.: -0.014 min
Response: 4566567
Conc: 33.78 ug/ml