

Data Path : Z:\pestpcbsrv\HPCHEM1\FID\_E\Data\FE050125AL\  
 Data File : FE053609.D  
 Signal(s) : FID1B.ch  
 Acq On : 01 May 2025 16:18  
 Operator : YP\AJ  
 Sample : Q1922-02  
 Misc :  
 ALS Vial : 12 Sample Multiplier: 1

Instrument :  
 FID\_E  
 ClientSampleId :  
 MH-R-EPH

Integration File: autoint1.e  
 Quant Time: May 02 02:19:20 2025  
 Quant Method : Z:\pestpcbsrv\HPCHEM1\FID\_E\methods\Aliphatic EPH 041725.M  
 Quant Title : GC Extractables  
 QLast Update : Tue Apr 29 06:49:03 2025  
 Response via : Initial Calibration  
 Integrator: ChemStation

Volume Inj. : 1 ul  
 Signal Phase : Rxi-1ms  
 Signal Info : 20M x 0.18mm x 0.18um

Compound	R.T.	Response	Conc Units
System Monitoring Compounds			
9) S ortho-Terphenyl (SURR)	11.864	3864635	21.427 ug/ml
Spiked Amount	50.000	Recovery	= 42.85%
12) S 1-chlorooctadecane (S...	13.309	3263938	24.146 ug/ml
Spiked Amount	50.000	Recovery	= 48.29%

Target Compounds

(f)=RT Delta > 1/2 Window

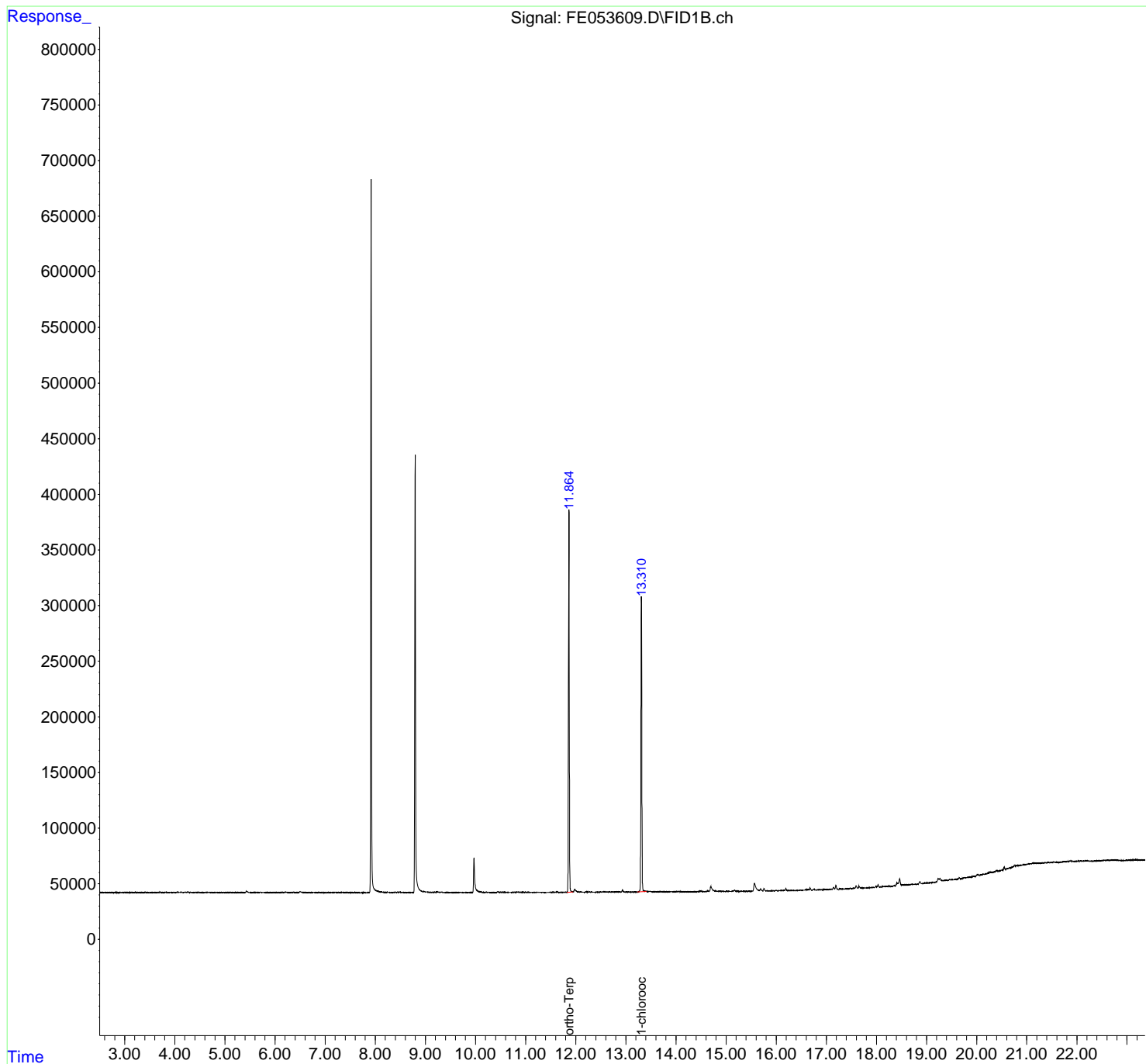
(m)=manual int.

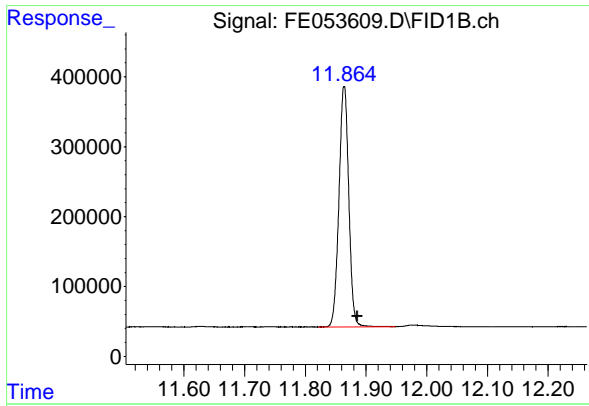
Data Path : Z:\pestpcbsrv\HPCHEM1\FID\_E\Data\FE050125AL\  
 Data File : FE053609.D  
 Signal(s) : FID1B.ch  
 Acq On : 01 May 2025 16:18  
 Operator : YP\AJ  
 Sample : Q1922-02  
 Misc :  
 ALS Vial : 12 Sample Multiplier: 1

Instrument :  
 FID\_E  
 ClientSampleId :  
 MH-R-EPH

Integration File: autoint1.e  
 Quant Time: May 02 02:19:20 2025  
 Quant Method : Z:\pestpcbsrv\HPCHEM1\FID\_E\methods\Aliphatic EPH 041725.M  
 Quant Title : GC Extractables  
 QLast Update : Tue Apr 29 06:49:03 2025  
 Response via : Initial Calibration  
 Integrator: ChemStation

Volume Inj. : 1 ul  
 Signal Phase : Rxi-1ms  
 Signal Info : 20M x 0.18mm x 0.18um

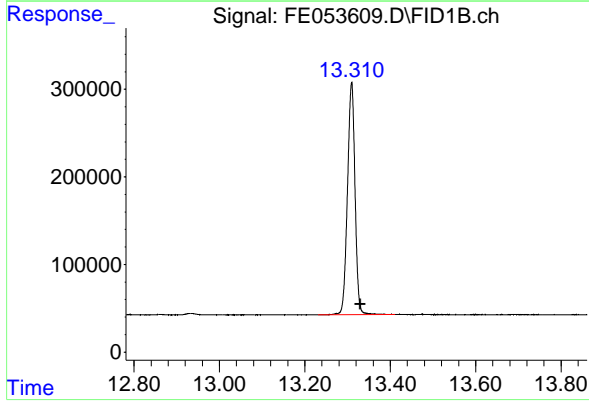




#9 ortho-Terphenyl (SURR)

R.T.: 11.864 min  
Delta R.T.: -0.022 min  
Response: 3864635  
Conc: 21.43 ug/ml

Instrument :  
FID\_E  
ClientSampleId :  
MH-R-EPH



#12 1-chlorooctadecane (SURR)

R.T.: 13.309 min  
Delta R.T.: -0.021 min  
Response: 3263938  
Conc: 24.15 ug/ml