

Data Path : Z:\pestpcbsrv\HPCHEM1\FID\_E\Data\FE050224AL\  
 Data File : FE047925.D  
 Signal(s) : FID1B.ch  
 Acq On : 02 May 2024 08:40  
 Operator : YP\AJ  
 Sample : P2326-02DL 5X  
 Misc :  
 ALS Vial : 7 Sample Multiplier: 1

Integration File: autoint1.e  
 Quant Time: May 03 01:25:23 2024  
 Quant Method : Z:\pestpcbsrv\HPCHEM1\FID\_E\methods\Aliphatic EPH 042724.M  
 Quant Title : GC Extractables  
 QLast Update : Mon Apr 29 03:29:12 2024  
 Response via : Initial Calibration  
 Integrator: ChemStation

Volume Inj. : 1 ul  
 Signal Phase : Rxi-1ms  
 Signal Info : 20M x 0.18mm x 0.18um

Compound	R.T.	Response	Conc Units
-----			
System Monitoring Compounds			
9) S ortho-Terphenyl (SURR)	11.971	882055	6.114 ug/mlm
Spiked Amount	50.000	Recovery	= 12.23%
12) S 1-chlorooctadecane (S...	13.401	1381572	12.364 ug/ml
Spiked Amount	50.000	Recovery	= 24.73%

Target Compounds

-----

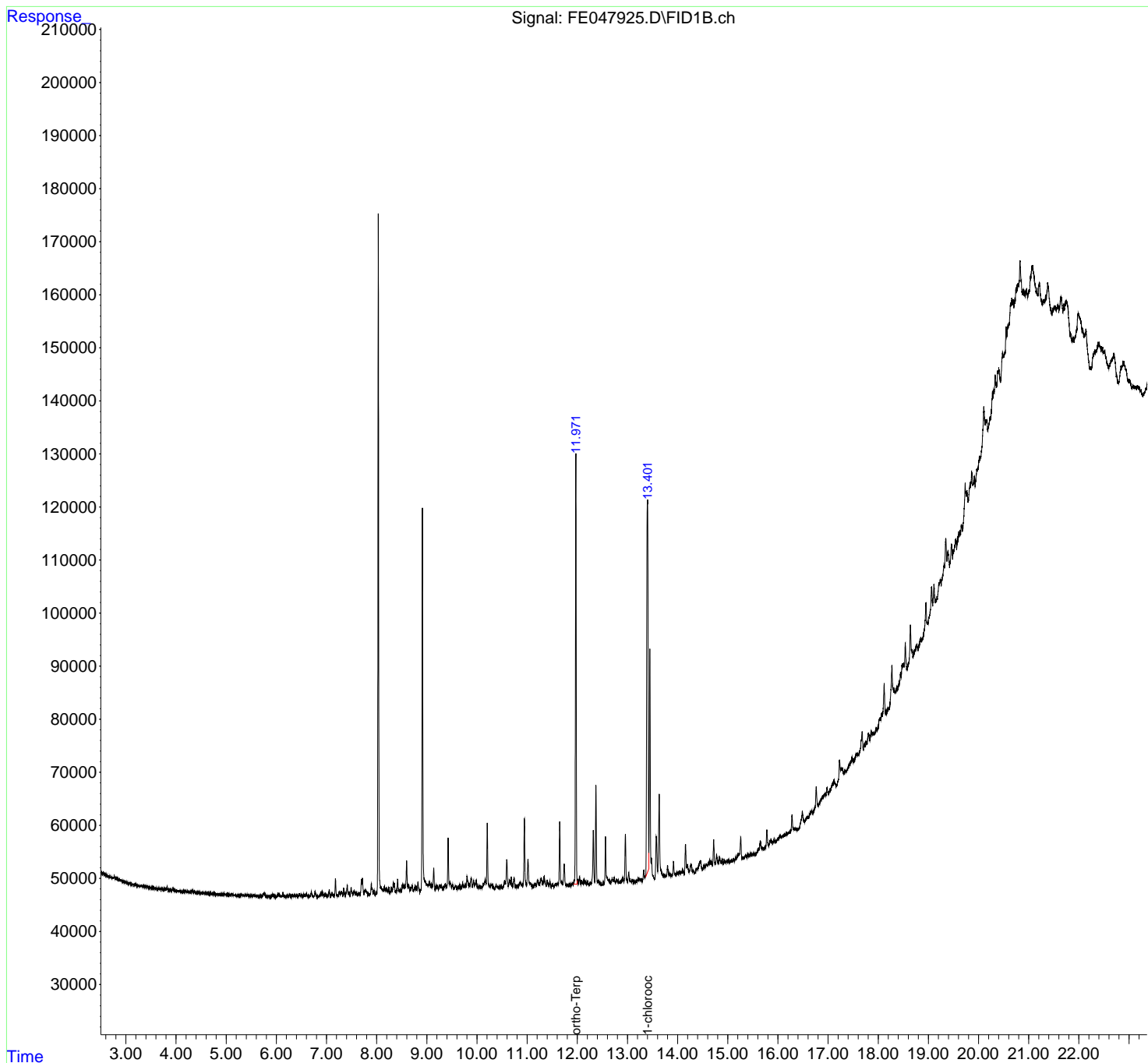
(f)=RT Delta > 1/2 Window

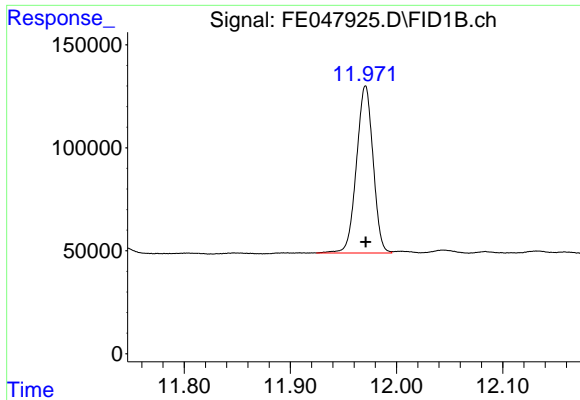
(m)=manual int.

Data Path : Z:\pestpcbsrv\HPCHEM1\FID\_E\Data\FE050224AL\  
Data File : FE047925.D  
Signal(s) : FID1B.ch  
Acq On : 02 May 2024 08:40  
Operator : YP\AJ  
Sample : P2326-02DL 5X  
Misc :  
ALS Vial : 7 Sample Multiplier: 1

Integration File: autoint1.e  
Quant Time: May 03 01:25:23 2024  
Quant Method : Z:\pestpcbsrv\HPCHEM1\FID\_E\methods\Aliphatic EPH 042724.M  
Quant Title : GC Extractables  
QLast Update : Mon Apr 29 03:29:12 2024  
Response via : Initial Calibration  
Integrator: ChemStation

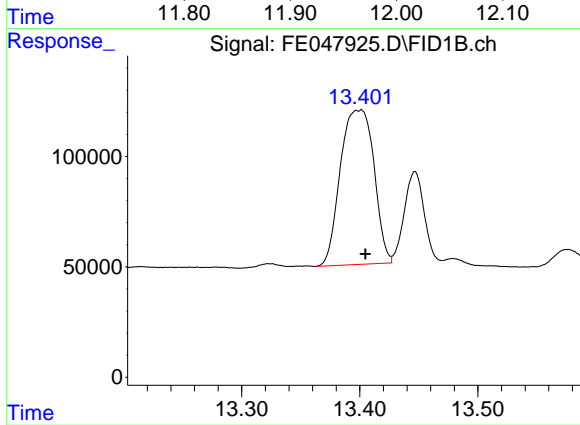
Volume Inj. : 1 ul  
Signal Phase : Rxi-1ms  
Signal Info : 20M x 0.18mm x 0.18um





#9 ortho-Terphenyl (SURR)

R.T.: 11.971 min  
Delta R.T.: 0.000 min  
Response: 882055  
Conc: 6.11 ug/ml m



#12 1-chlorooctadecane (SURR)

R.T.: 13.401 min  
Delta R.T.: -0.004 min  
Response: 1381572  
Conc: 12.36 ug/ml