

Data Path : Z:\pestpcbsrv\HPCHEM1\FID\_E\Data\FE050523AL\  
 Data File : FE041753.D  
 Signal(s) : FID1B.ch  
 Acq On : 05 May 2023 11:26  
 Operator : YP\AJ  
 Sample : 02603-02DL 20X  
 Misc :  
 ALS Vial : 14 Sample Multiplier: 1

**Instrument :**  
 FID\_E  
**ClientSampleId :**  
 BUR-SOILCOMP-EPH-2DL

**Manual Integrations**  
**APPROVED**

Reviewed By :Yogesh Patel 05/08/2023  
 Supervised By :Ankita Jodhani 05/08/2023

Integration File: autoint1.e  
 Quant Time: May 06 01:26:35 2023  
 Quant Method : Z:\pestpcbsrv\HPCHEM1\FID\_E\methods\Aliphatic EPH 042123.M  
 Quant Title : GC Extractables  
 QLast Update : Fri Apr 21 07:33:51 2023  
 Response via : Initial Calibration  
 Integrator: ChemStation

Volume Inj. : 1 ul  
 Signal Phase : Rxi-1ms  
 Signal Info : 20M x 0.18mm x 0.18um

Compound	R.T.	Response	Conc Units
-----			
System Monitoring Compounds			
9) S ortho-Terphenyl (SURR)	11.971	365320	1.947 ug/mlm
Spiked Amount	50.000	Recovery =	3.89%
12) S 1-chlorooctadecane (S...	13.410	175474	1.242 ug/mlm
Spiked Amount	50.000	Recovery =	2.48%

Target Compounds

(f)=RT Delta > 1/2 Window

(m)=manual int.

Data Path : Z:\pestpcbsrv\HPCHEM1\FID\_E\Data\FE050523AL\  
Data File : FE041753.D  
Signal(s) : FID1B.ch  
Acq On : 05 May 2023 11:26  
Operator : YP\AJ  
Sample : 02603-02DL 20X  
Misc :  
ALS Vial : 14 Sample Multiplier: 1

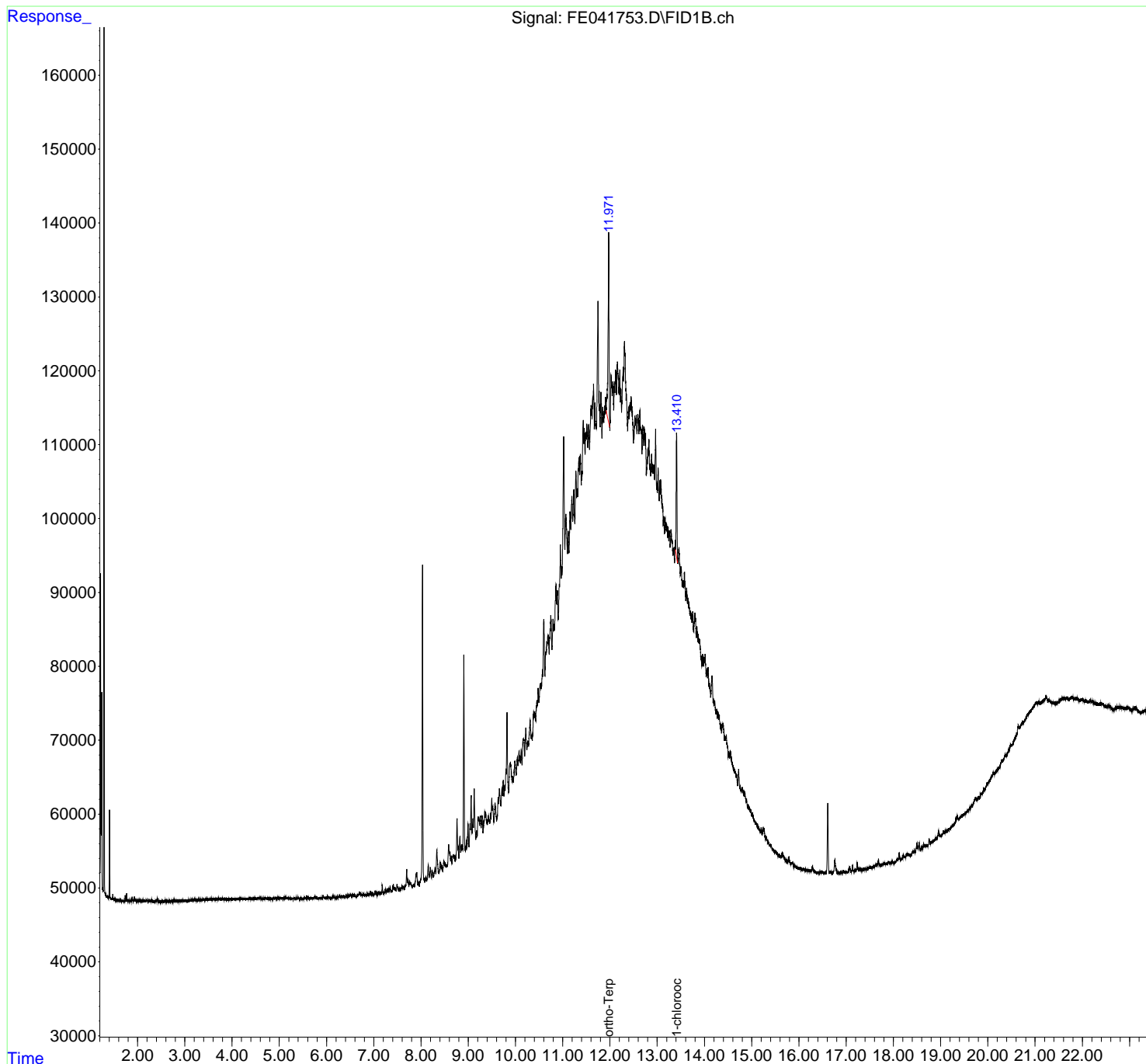
Instrument :  
FID\_E  
ClientSampleId :  
BUR-SOILCOMP-EPH-2DL

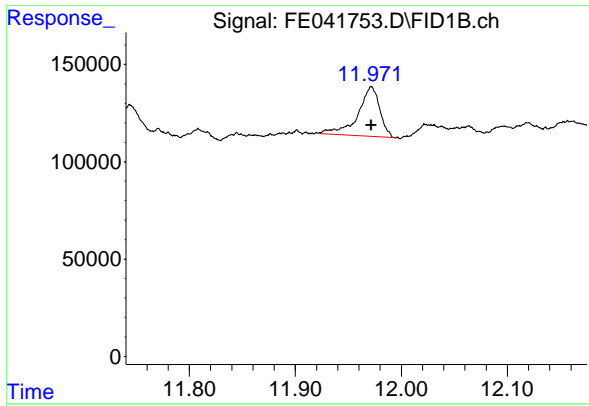
Manual Integrations  
APPROVED

Reviewed By :Yogesh Patel 05/08/2023  
Supervised By :Ankita Jodhani 05/08/2023

Integration File: autoint1.e  
Quant Time: May 06 01:26:35 2023  
Quant Method : Z:\pestpcbsrv\HPCHEM1\FID\_E\methods\Aliphatic EPH 042123.  
Quant Title : GC Extractables  
QLast Update : Fri Apr 21 07:33:51 2023  
Response via : Initial Calibration  
Integrator: ChemStation

Volume Inj. : 1 ul  
Signal Phase : Rxi-1ms  
Signal Info : 20M x 0.18mm x 0.18um





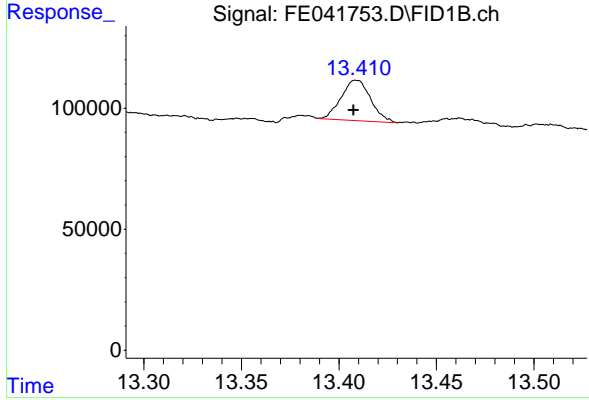
#9 ortho-Terphenyl (SURR)

R.T.: 11.971 min  
 Delta R.T.: 0.000 min  
 Response: 365320  
 Conc: 1.95 ug/ml

Instrument : FID\_E  
 ClientSampleId : BUR-SOILCOMP-EPH-2DL

Manual Integrations  
 APPROVED

Reviewed By :Yogesh Patel 05/08/2023  
 Supervised By :Ankita Jodhani 05/08/2023



#12 1-chlorooctadecane (SURR)

R.T.: 13.410 min  
 Delta R.T.: 0.003 min  
 Response: 175474  
 Conc: 1.24 ug/ml m