

Data Path : P:\HPCHEM1\FID\_E\Data\FE050818\  
 Data File : FE027024.D  
 Signal(s) : FID1B.CH  
 Acq On : 09 May 2018 16:03  
 Operator : UA/AJ  
 Sample : J2811-04  
 Misc :  
 ALS Vial : 38 Sample Multiplier: 1

Instrument :  
 FID\_E  
 ClientSampleId :

Manual Integrations  
**APPROVED**  
 ugo  
 5/10/2018 11:35:42 AM

Integration File: autoint1.e  
 Quant Time: May 09 17:16:19 2018  
 Quant Method : P:\HPCHEM1\FID\_E\methods\FE050818.M  
 Quant Title :  
 QLast Update : Wed May 09 08:38:37 2018  
 Response via : Initial Calibration  
 Integrator: ChemStation 6890 Scale Mode: Large solvent peaks clipped

Volume Inj. : 1uL  
 Signal Phase : Rxi-1ms  
 Signal Info : 20mx0.18mmx0.18um

Compound	R.T.	Response	Conc Units
-----			
System Monitoring Compounds			
9) S TETRACOSANE-d50 (SURR...	15.300	335793	2.280 ug/mlm
Target Compounds			
-----			

(f)=RT Delta > 1/2 Window

(m)=manual int.

Data Path : P:\HPCHEM1\FID\_E\Data\FE050818\  
 Data File : FE027024.D  
 Signal(s) : FID1B.CH  
 Acq On : 09 May 2018 16:03  
 Operator : UA/AJ  
 Sample : J2811-04  
 Misc :  
 ALS Vial : 38 Sample Multiplier: 1

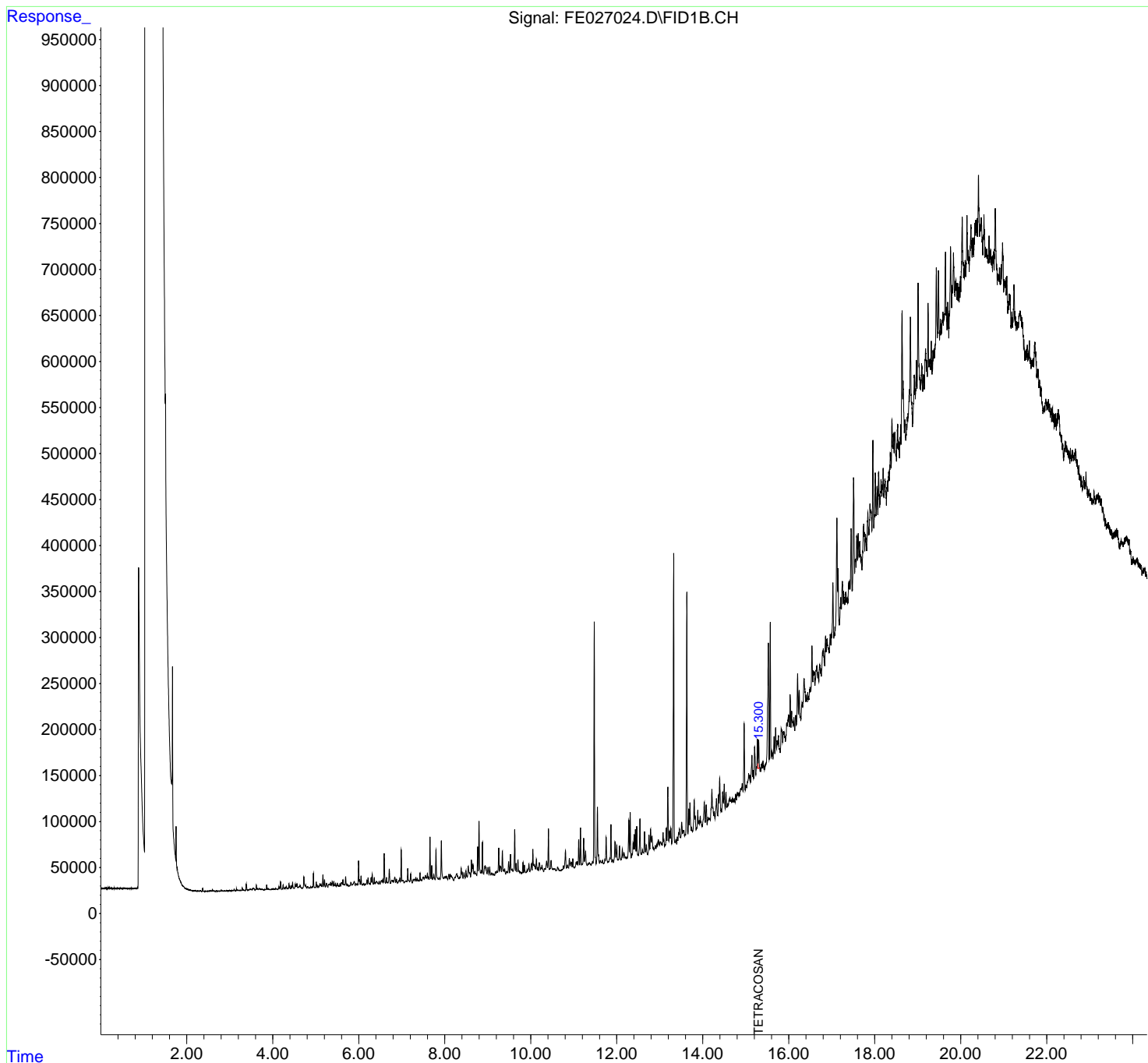
Instrument :  
 FID\_E  
 ClientSampled :

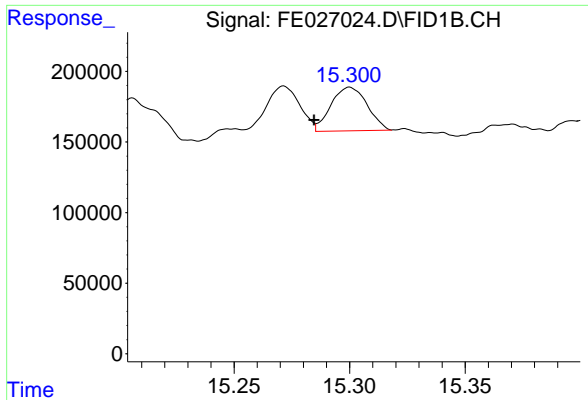
Manual Integrations  
 APPROVED

ugo  
 5/10/2018 11:35:42 AM

Integration File: autoint1.e  
 Quant Time: May 09 17:16:19 2018  
 Quant Method : P:\HPCHEM1\FID\_E\methods\FE050818.M  
 Quant Title :  
 QLast Update : Wed May 09 08:38:37 2018  
 Response via : Initial Calibration  
 Integrator: ChemStation 6890 Scale Mode: Large solvent peaks clipped

Volume Inj. : 1uL  
 Signal Phase : Rxi-1ms  
 Signal Info : 20mx0.18mmx0.18um





#9 TETRACOSANE-d50 (SURROGATE)

R.T.: 15.300 min  
Delta R.T.: 0.015 min  
Response: 335793  
Conc: 2.28 ug/ml m

Instrument :  
FID\_E  
ClientSampleId :

Manual Integrations  
APPROVED

ugo  
5/10/2018 11:35:42 AM