

Data Path : Z:\pestpcbsrv\HPCHEM1\FID_E\Data\FE050820\
Data File : FE031943.D
Signal(s) : FID1B.CH
Acq On : 08 May 2020 16:59
Operator : DD\AJ
Sample : L2556-03
Misc :
ALS Vial : 9 Sample Multiplier: 1

Instrument :
FID_E
ClientSampleId :
NORTH-AOC14-CAR-WASH-TPH-3

Integration File: autoint1.e
Quant Time: May 09 02:21:42 2020
Quant Method : Z:\pestpcbsrv\HPCHEM1\FID_E\methods\FE050720.M
Quant Title :
QLast Update : Thu May 07 13:58:31 2020
Response via : Initial Calibration
Integrator: ChemStation 6890 Scale Mode: Large solvent peaks clipped

Volume Inj. : 1uL
Signal Phase : Rxi-1ms
Signal Info : 20mx0.18mmx0.18um

Compound	R.T.	Response	Conc Units

System Monitoring Compounds			
9) S TETRACOSANE-d50 (SURR...	14.365	6182386	15.951 ug/ml
Target Compounds			

(f)=RT Delta > 1/2 Window

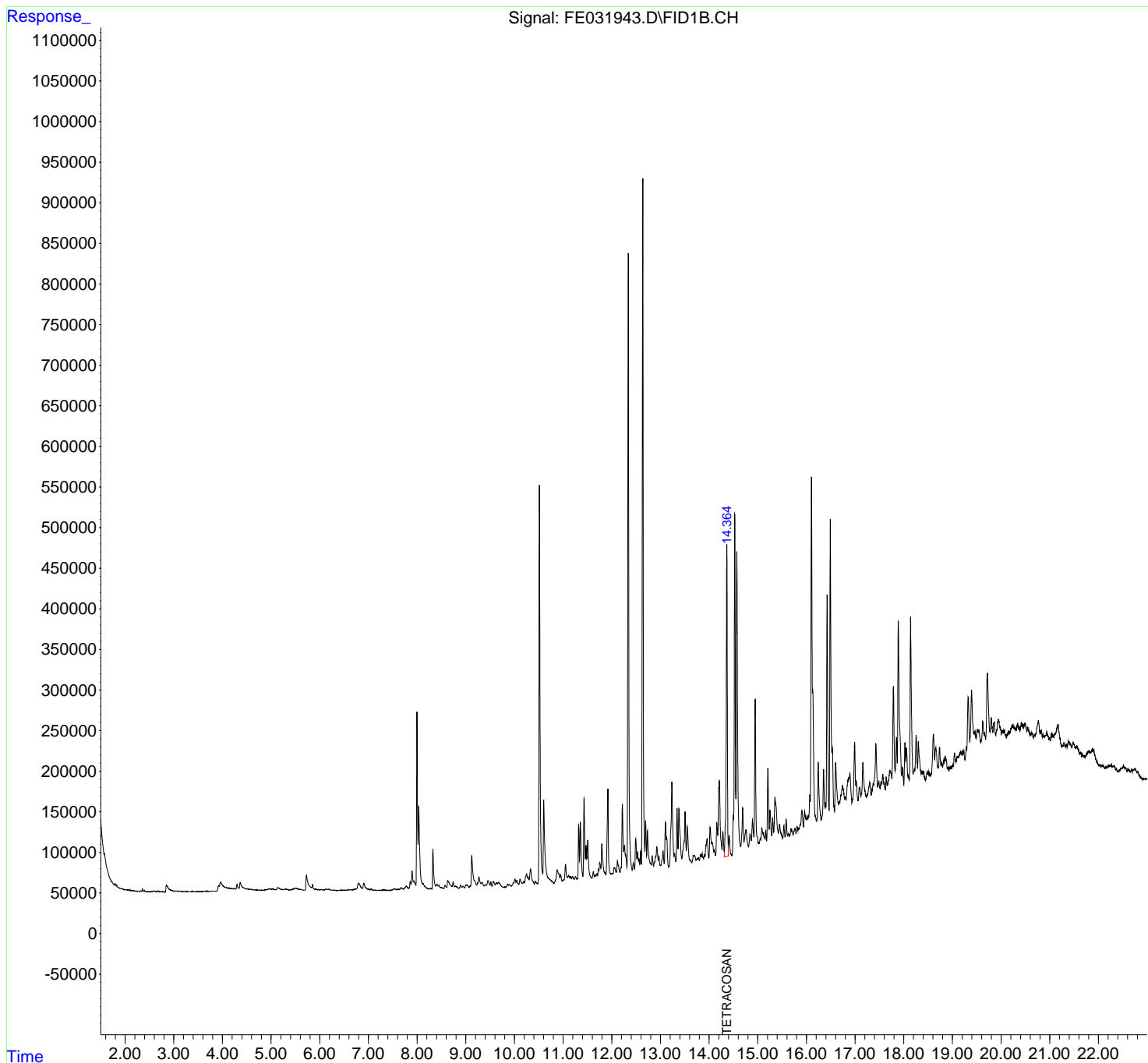
(m)=manual int.

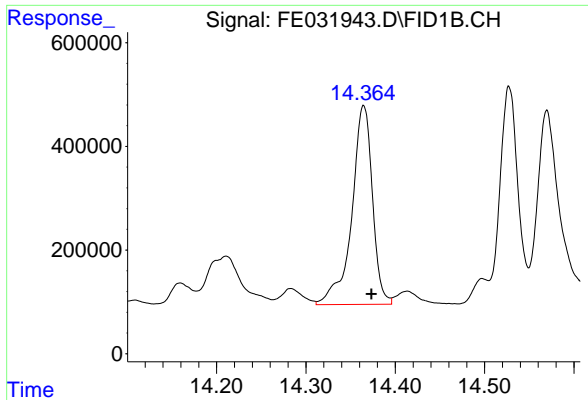
Data Path : Z:\pestpcbsrv\HPCHEM1\FID_E\Data\FE050820\
Data File : FE031943.D
Signal(s) : FID1B.CH
Acq On : 08 May 2020 16:59
Operator : DD\AJ
Sample : L2556-03
Misc :
ALS Vial : 9 Sample Multiplier: 1

Instrument :
FID_E
ClientSampleId :
NORTH-AOC14-CAR-WASH-TPH-3

Integration File: autoint1.e
Quant Time: May 09 02:21:42 2020
Quant Method : Z:\pestpcbsrv\HPCHEM1\FID_E\methods\FE050720.M
Quant Title :
QLast Update : Thu May 07 13:58:31 2020
Response via : Initial Calibration
Integrator: ChemStation 6890 Scale Mode: Large solvent peaks clipped

Volume Inj. : 1uL
Signal Phase : Rxi-1ms
Signal Info : 20mx0.18mmx0.18um





#9 TETRACOSANE-d50 (SURROGATE)

R.T.: 14.365 min
Delta R.T.: -0.009 min
Response: 6182386
Conc: 15.95 ug/ml

Instrument :
FID_E
ClientSampleId :
NORTH-AOC14-CAR-WASH-TPH-3