

Data Path : Z:\pestpcbsrv\HPCHEM1\FID_E\Data\FE050825AL\
 Data File : FE053733.D
 Signal(s) : FID1B.ch
 Acq On : 09 May 2025 03:34
 Operator : YP\AJ
 Sample : Q1972-17MS
 Misc :
 ALS Vial : 26 Sample Multiplier: 1

Instrument :
 FID_E
 ClientSampleId :
 SUB-WC-2MS

Integration File: autoint1.e
 Quant Time: May 09 04:29:31 2025
 Quant Method : Z:\pestpcbsrv\HPCHEM1\FID_E\methods\Aliphatic EPH 041725.M
 Quant Title : GC Extractables
 QLast Update : Tue Apr 29 06:49:03 2025
 Response via : Initial Calibration
 Integrator: ChemStation

Volume Inj. : 1 ul
 Signal Phase : Rxi-1ms
 Signal Info : 20M x 0.18mm x 0.18um

Compound	R.T.	Response	Conc Units

System Monitoring Compounds			
9) S ortho-Terphenyl (SURR)	11.859	5418259	30.041 ug/ml
Spiked Amount	50.000	Recovery	= 60.08%
12) S 1-chlorooctadecane (S...	13.303	4336594	32.081 ug/ml
Spiked Amount	50.000	Recovery	= 64.16%
Target Compounds			
1) T n-Nonane (C9)	3.210	3867124	28.206 ug/ml
2) T n-Decane (C10)	4.503	4936881	35.688 ug/ml
3) T A~Naphthalene (C11.7)	6.180	5494753	36.402 ug/ml
4) T n-Dodecane (C12)	6.649	5078547	36.211 ug/ml
5) T A~2-methylnaphthalene...	7.282	5251434	35.173 ug/ml
6) T n-Tetradecane (C14)	8.485	5564374	39.663 ug/ml
7) T n-Hexadecane (C16)	10.097	5720934	39.917 ug/ml
8) T n-Octadecane (C18)	11.545	5751058	39.463 ug/ml
10) T n-Eicosane (C20)	12.860	5850441	40.206 ug/ml
11) T n-Heneicosane (C21)	13.472	5565551	38.424 ug/ml
13) T n-Docosane (C22)	14.060	5519676	38.251 ug/ml
14) T n-Tetracosane (C24)	15.156	11072789	77.087 ug/ml
15) T n-Hexacosane (C26)	16.189	5277155	37.260 ug/ml
16) T n-Octacosane (C28)	17.139	5436654	39.077 ug/ml
17) T n-Tricontane (C30)	18.030	5056888	36.330 ug/ml
18) T n-Dotriacontane (C32)	18.863	5169997	37.653 ug/ml
19) T n-Tetratriacontane (C34)	19.647	5228745	40.130 ug/ml
20) T n-Hexatriacontane (C36)	20.388	5025537	39.807 ug/ml
21) T n-Octatriacontane (C38)	21.120	5006617	41.095 ug/ml
22) T n-Tetracontane (C40)	22.022f	5266294	44.099 ug/ml

(f)=RT Delta > 1/2 Window

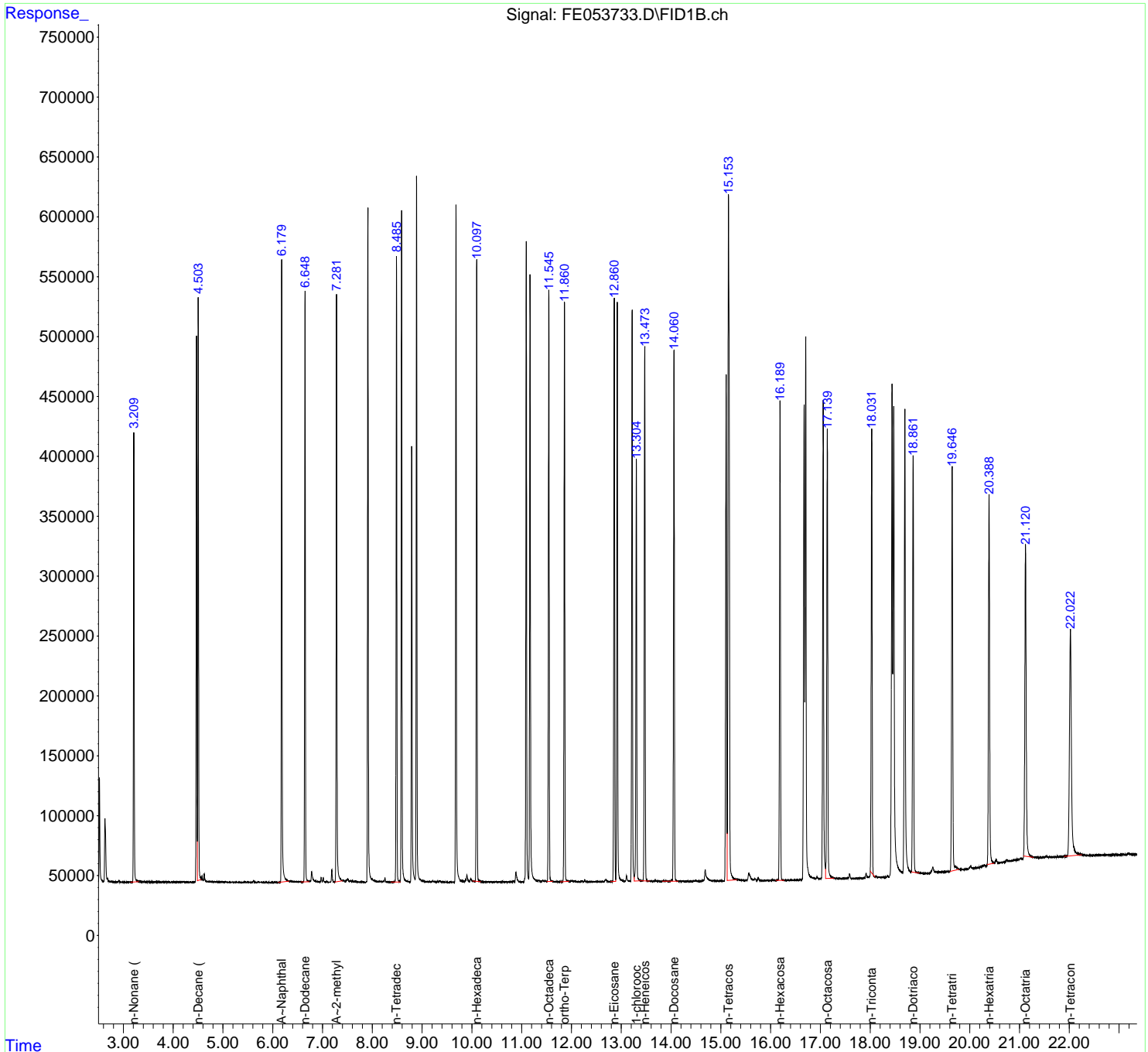
(m)=manual int.

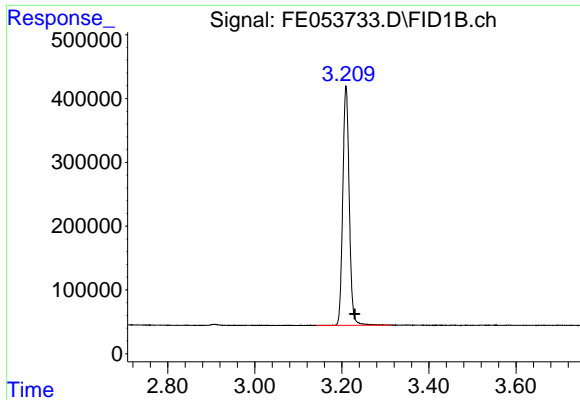
Data Path : Z:\pestpcbsrv\HPCHEM1\FID_E\Data\FE050825AL\
 Data File : FE053733.D
 Signal(s) : FID1B.ch
 Acq On : 09 May 2025 03:34
 Operator : YP\AJ
 Sample : Q1972-17MS
 Misc :
 ALS Vial : 26 Sample Multiplier: 1

Instrument :
 FID_E
 ClientSampleId :
 SUB-WC-2MS

Integration File: autoint1.e
 Quant Time: May 09 04:29:31 2025
 Quant Method : Z:\pestpcbsrv\HPCHEM1\FID_E\methods\Aliphatic EPH 041725.M
 Quant Title : GC Extractables
 QLast Update : Tue Apr 29 06:49:03 2025
 Response via : Initial Calibration
 Integrator: ChemStation

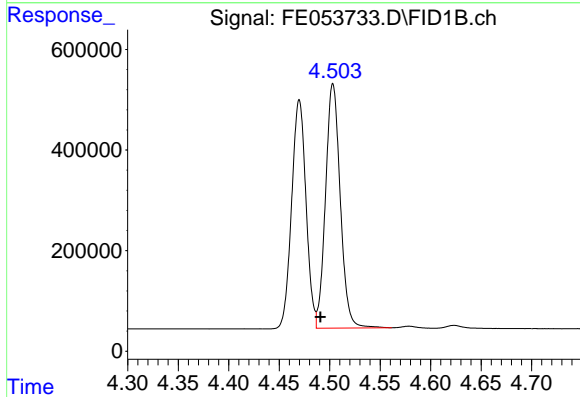
Volume Inj. : 1 ul
 Signal Phase : Rxi-1ms
 Signal Info : 20M x 0.18mm x 0.18um



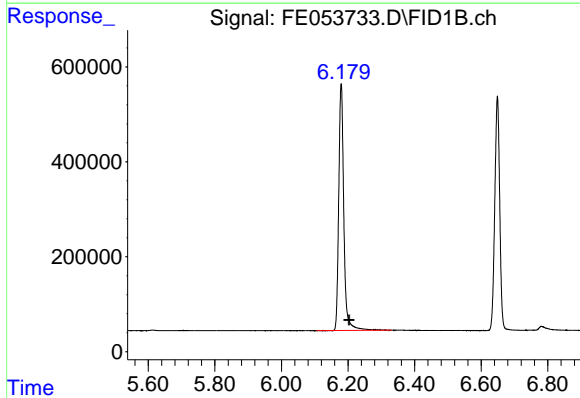


#1 n-Nonane (C9)
 R.T.: 3.210 min
 Delta R.T.: -0.020 min
 Response: 3867124
 Conc: 28.21 ug/ml

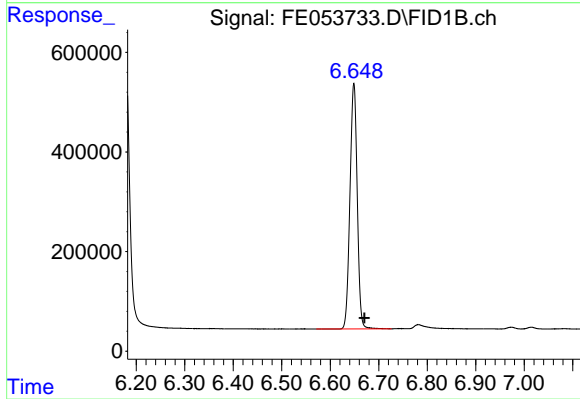
Instrument :
 FID_E
 ClientSampleId :
 SUB-WC-2MS



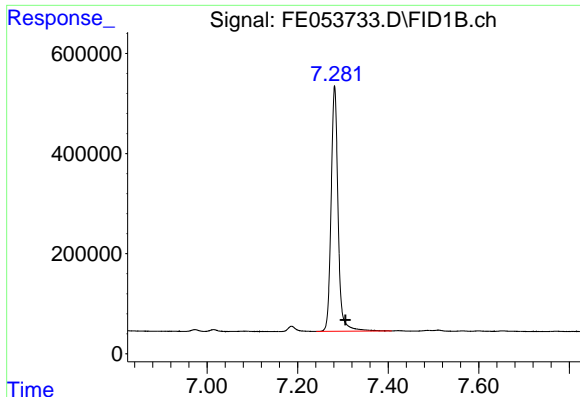
#2 n-Decane (C10)
 R.T.: 4.503 min
 Delta R.T.: 0.013 min
 Response: 4936881
 Conc: 35.69 ug/ml



#3 A~Naphthalene (C11.7)
 R.T.: 6.180 min
 Delta R.T.: -0.024 min
 Response: 5494753
 Conc: 36.40 ug/ml



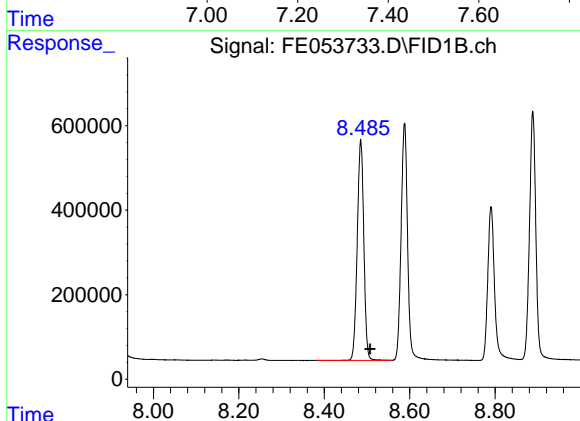
#4 n-Dodecane (C12)
 R.T.: 6.649 min
 Delta R.T.: -0.022 min
 Response: 5078547
 Conc: 36.21 ug/ml



#5 A~2-methylnaphthalene (C12.89)

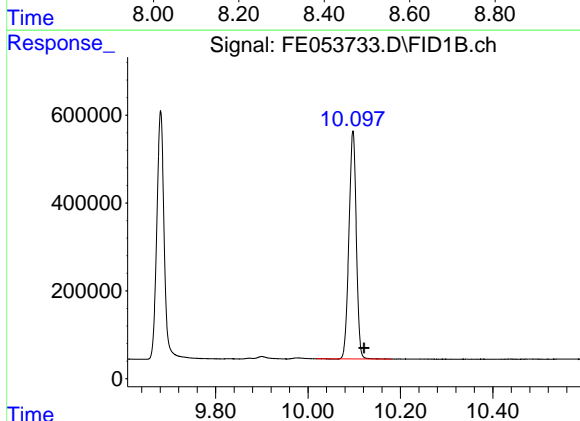
R.T.: 7.282 min
 Delta R.T.: -0.024 min
 Response: 5251434
 Conc: 35.17 ug/ml

Instrument :
 FID_E
 ClientSampleId :
 SUB-WC-2MS



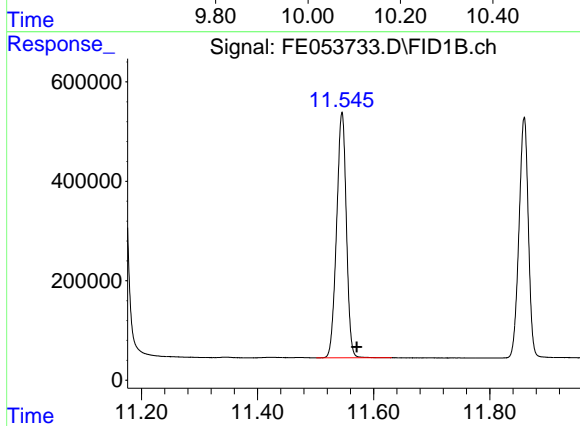
#6 n-Tetradecane (C14)

R.T.: 8.485 min
 Delta R.T.: -0.022 min
 Response: 5564374
 Conc: 39.66 ug/ml



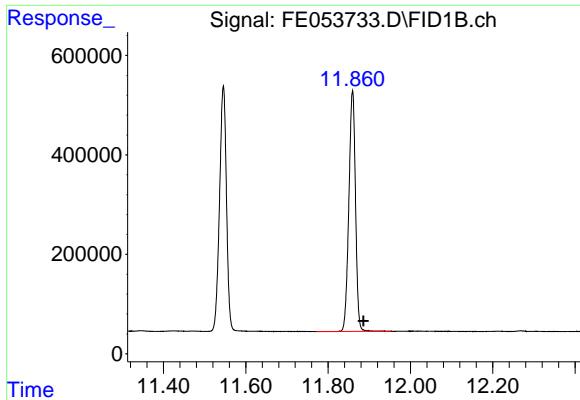
#7 n-Hexadecane (C16)

R.T.: 10.097 min
 Delta R.T.: -0.024 min
 Response: 5720934
 Conc: 39.92 ug/ml



#8 n-Octadecane (C18)

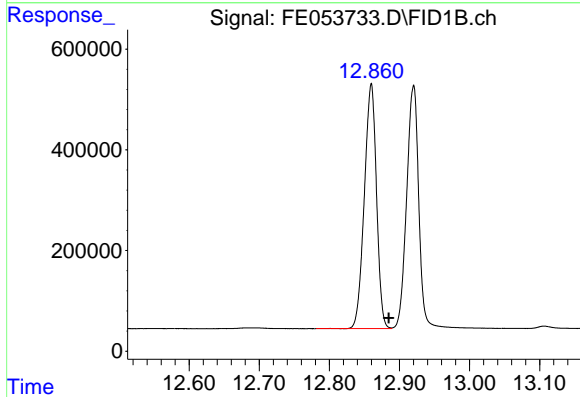
R.T.: 11.545 min
 Delta R.T.: -0.025 min
 Response: 5751058
 Conc: 39.46 ug/ml



#9 ortho-Terphenyl (SURR)

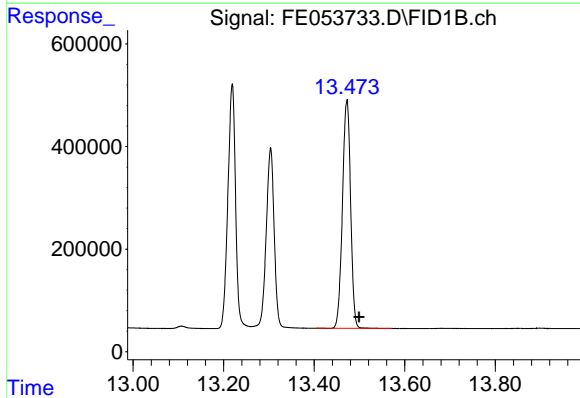
R.T.: 11.859 min
 Delta R.T.: -0.027 min
 Response: 5418259
 Conc: 30.04 ug/ml

Instrument :
 FID_E
 ClientSampleId :
 SUB-WC-2MS



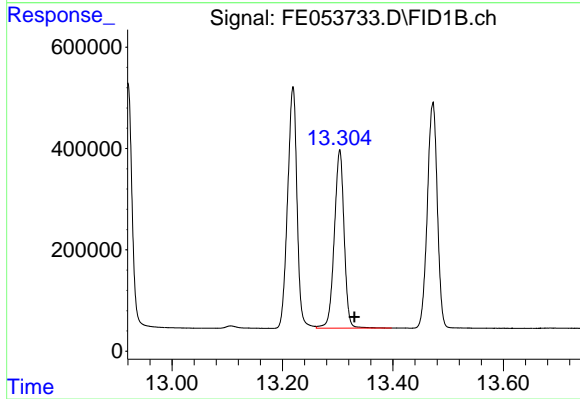
#10 n-Eicosane (C20)

R.T.: 12.860 min
 Delta R.T.: -0.025 min
 Response: 5850441
 Conc: 40.21 ug/ml



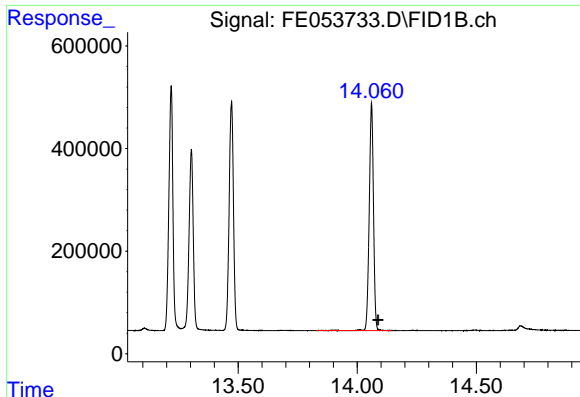
#11 n-Heneicosane (C21)

R.T.: 13.472 min
 Delta R.T.: -0.027 min
 Response: 5565551
 Conc: 38.42 ug/ml



#12 1-chlorooctadecane (SURR)

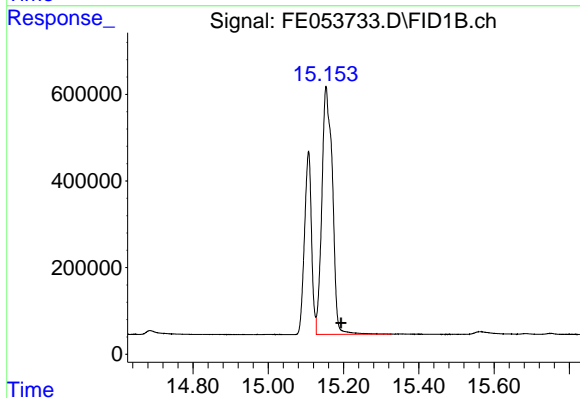
R.T.: 13.303 min
 Delta R.T.: -0.027 min
 Response: 4336594
 Conc: 32.08 ug/ml



#13 n-Docosane (C22)

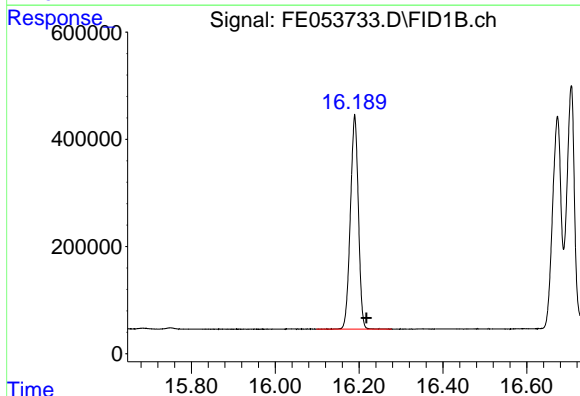
R.T.: 14.060 min
Delta R.T.: -0.028 min
Response: 5519676
Conc: 38.25 ug/ml

Instrument :
FID_E
ClientSampleId :
SUB-WC-2MS



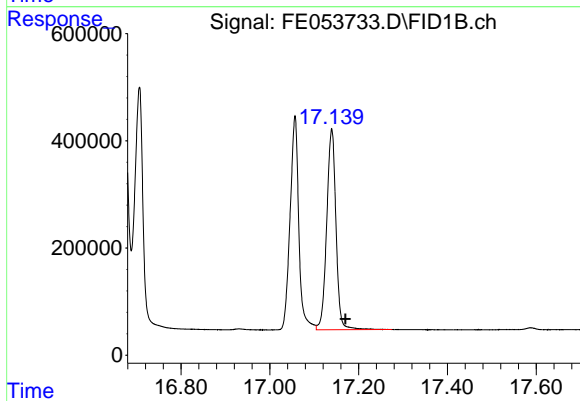
#14 n-Tetracosane (C24)

R.T.: 15.156 min
Delta R.T.: -0.038 min
Response: 11072789
Conc: 77.09 ug/ml



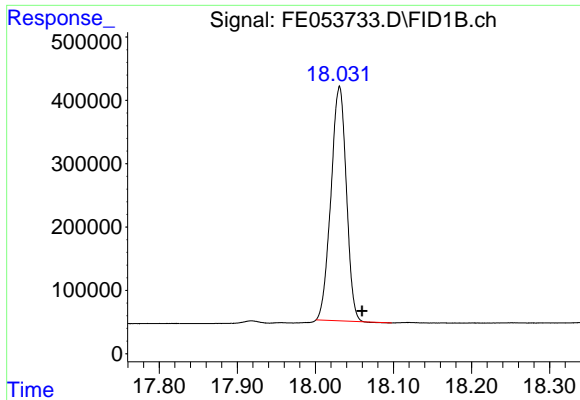
#15 n-Hexacosane (C26)

R.T.: 16.189 min
Delta R.T.: -0.028 min
Response: 5277155
Conc: 37.26 ug/ml



#16 n-Octacosane (C28)

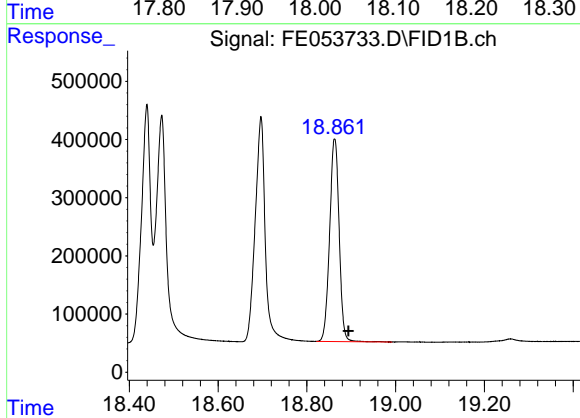
R.T.: 17.139 min
Delta R.T.: -0.031 min
Response: 5436654
Conc: 39.08 ug/ml



#17 n-Tricontane (C30)

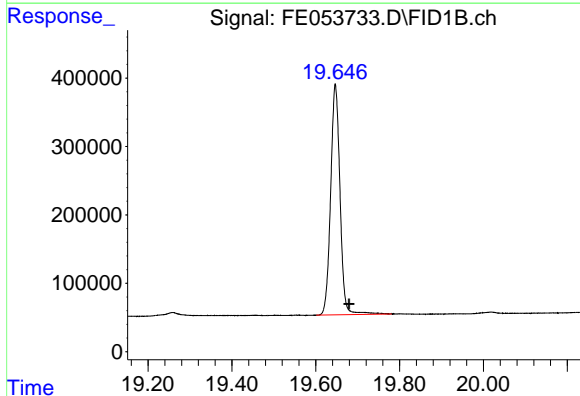
R.T.: 18.030 min
 Delta R.T.: -0.029 min
 Response: 5056888
 Conc: 36.33 ug/ml

Instrument :
 FID_E
 ClientSampleId :
 SUB-WC-2MS



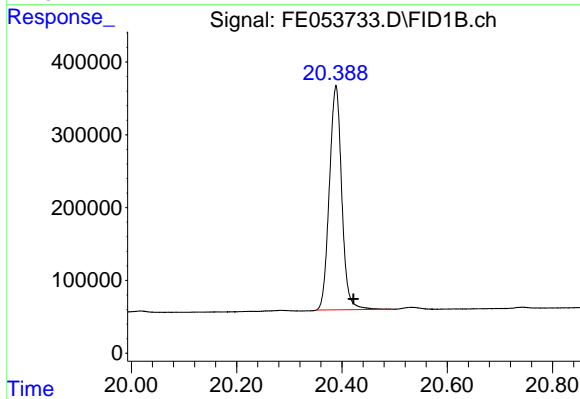
#18 n-Dotriacontane (C32)

R.T.: 18.863 min
 Delta R.T.: -0.031 min
 Response: 5169997
 Conc: 37.65 ug/ml



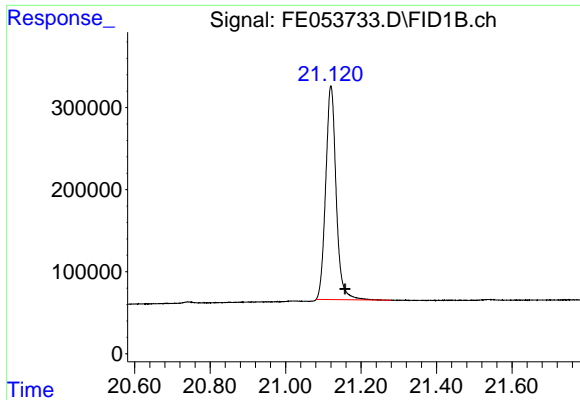
#19 n-Tetratriacontane (C34)

R.T.: 19.647 min
 Delta R.T.: -0.033 min
 Response: 5228745
 Conc: 40.13 ug/ml



#20 n-Hexatriacontane (C36)

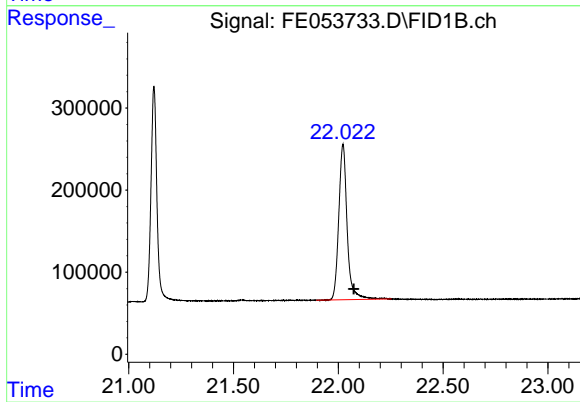
R.T.: 20.388 min
 Delta R.T.: -0.034 min
 Response: 5025537
 Conc: 39.81 ug/ml



#21 n-Octatriacontane (C38)

R.T.: 21.120 min
Delta R.T.: -0.038 min
Response: 5006617
Conc: 41.09 ug/ml

Instrument :
FID_E
ClientSampleId :
SUB-WC-2MS



#22 n-Tetracontane (C40)

R.T.: 22.022 min
Delta R.T.: -0.052 min
Response: 5266294
Conc: 44.10 ug/ml