

Data Path : Z:\pestpcbsrv\HPCHEM1\FID\_E\Data\FE050825AL\  
 Data File : FE053710.D  
 Signal(s) : FID1B.ch  
 Acq On : 08 May 2025 12:12  
 Operator : YP\AJ  
 Sample : 20 PPM ALIPHATIC HC STD  
 Misc :  
 ALS Vial : 3 Sample Multiplier: 1

**Instrument :**  
 FID\_E  
**ClientSampleId :**  
 20 PPM ALIPHATIC HC STD

**Manual Integrations**  
**APPROVED**

Reviewed By :Yogesh Patel 05/09/2025  
 Supervised By :mohammad ahmed 05/12/2025

Integration File: autoint1.e  
 Quant Time: May 09 01:59:44 2025  
 Quant Method : Z:\pestpcbsrv\HPCHEM1\FID\_E\methods\Aliphatic EPH 041725.M  
 Quant Title : GC Extractables  
 QLast Update : Tue Apr 29 06:49:03 2025  
 Response via : Initial Calibration  
 Integrator: ChemStation

Volume Inj. : 1 ul  
 Signal Phase : Rxi-1ms  
 Signal Info : 20M x 0.18mm x 0.18um

Compound	R.T.	Response	Conc Units
<b>System Monitoring Compounds</b>			
9) S ortho-Terphenyl (SURR)	11.860	2915074	16.162 ug/ml
Spiked Amount	50.000	Recovery =	32.32%
12) S 1-chlorooctadecane (S...	13.305	2185588	16.169 ug/mlm
Spiked Amount	50.000	Recovery =	32.34%
<b>Target Compounds</b>			
1) T n-Nonane (C9)	3.207	2271636	16.569 ug/ml
2) T n-Decane (C10)	4.468	2387151	17.256 ug/ml
3) T A~Naphthalene (C11.7)	6.181	2571249	17.034 ug/ml
4) T n-Dodecane (C12)	6.649	2426785	17.303 ug/ml
5) T A~2-methylnaphthalene...	7.283	2491548	16.688 ug/ml
6) T n-Tetradecane (C14)	8.485	2424405	17.281 ug/ml
7) T n-Hexadecane (C16)	10.098	2440863	17.031 ug/ml
8) T n-Octadecane (C18)	11.545	2427214	16.655 ug/ml
10) T n-Eicosane (C20)	12.859	2368310	16.276 ug/ml
11) T n-Heneicosane (C21)	13.473	2333914	16.113 ug/ml
13) T n-Docosane (C22)	14.060	2312655	16.026 ug/ml
14) T n-Tetracosane (C24)	15.165	2321006	16.158 ug/mlm
15) T n-Hexacosane (C26)	16.190	2269592	16.025 ug/ml
16) T n-Octacosane (C28)	17.141	2371970	17.049 ug/ml
17) T n-Tricontane (C30)	18.030	2640637	18.971 ug/mlm
18) T n-Dotriacontane (C32)	18.865	2739173	19.949 ug/ml
19) T n-Tetratriacontane (C34)	19.649	2585220	19.841 ug/ml
20) T n-Hexatriacontane (C36)	20.391	2458614	19.475 ug/ml
21) T n-Octatriacontane (C38)	21.125	2312551	18.982 ug/ml
22) T n-Tetracontane (C40)	22.024	2229456	18.669 ug/ml

(f)=RT Delta > 1/2 Window

(m)=manual int.

Data Path : Z:\pestpcbsrv\HPCHEM1\FID\_E\Data\FE050825AL\  
 Data File : FE053710.D  
 Signal(s) : FID1B.ch  
 Acq On : 08 May 2025 12:12  
 Operator : YP\AJ  
 Sample : 20 PPM ALIPHATIC HC STD  
 Misc :  
 ALS Vial : 3 Sample Multiplier: 1

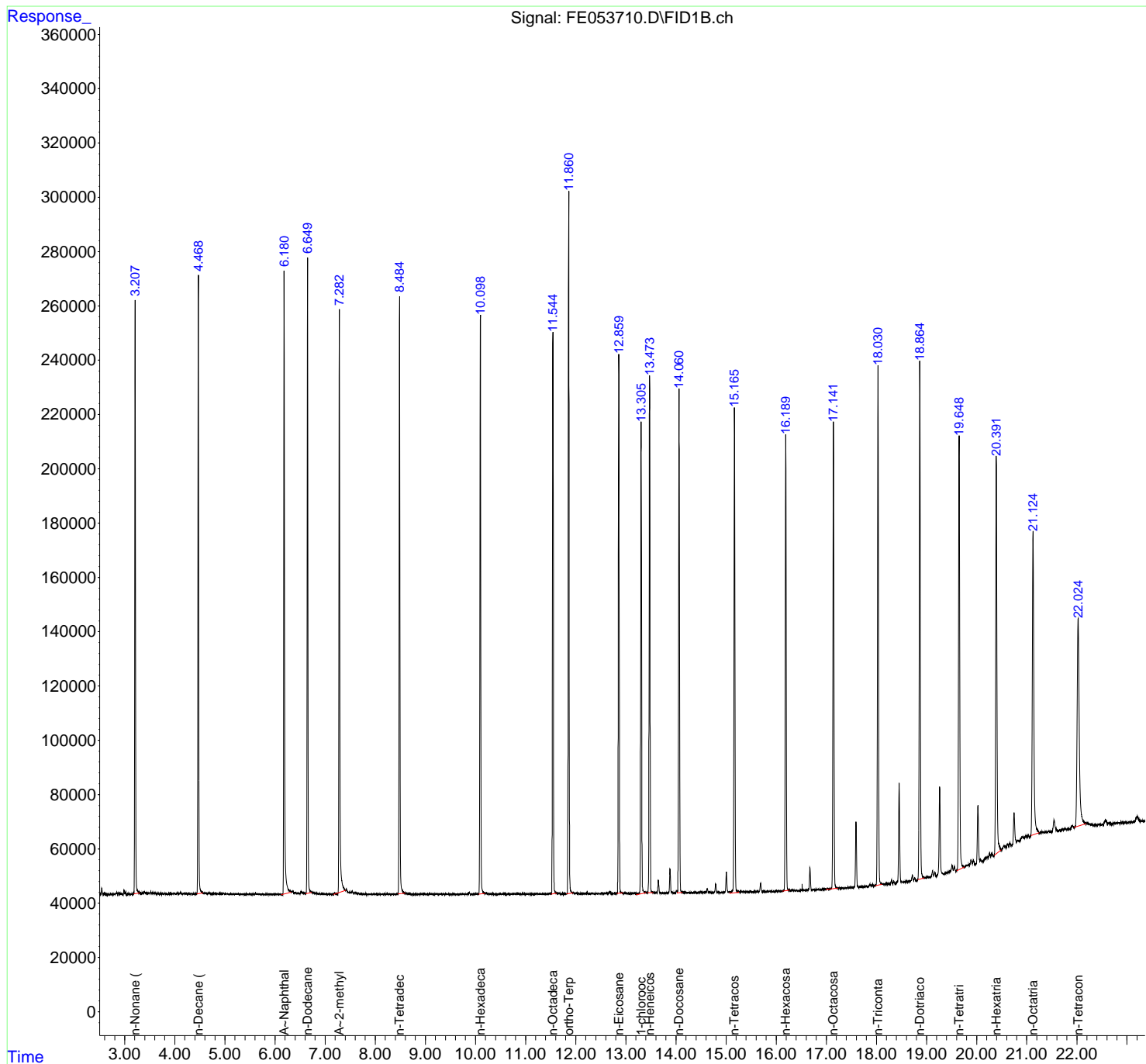
**Instrument :**  
 FID\_E  
**ClientSampleId :**  
 20 PPM ALIPHATIC HC STD

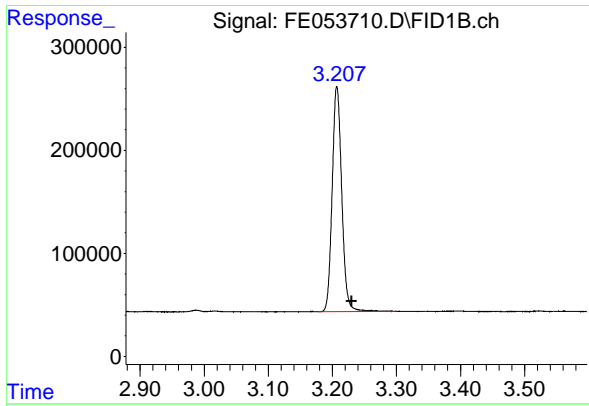
**Manual Integrations**  
**APPROVED**

Reviewed By :Yogesh Patel 05/09/2025  
 Supervised By :mohammad ahmed 05/12/2025

Integration File: autoint1.e  
 Quant Time: May 09 01:59:44 2025  
 Quant Method : Z:\pestpcbsrv\HPCHEM1\FID\_E\methods\Aliphatic EPH 041725.  
 Quant Title : GC Extractables  
 QLast Update : Tue Apr 29 06:49:03 2025  
 Response via : Initial Calibration  
 Integrator: ChemStation

Volume Inj. : 1 ul  
 Signal Phase : Rxi-1ms  
 Signal Info : 20M x 0.18mm x 0.18um





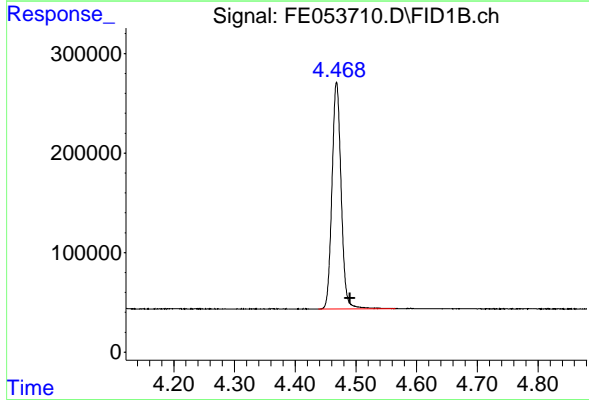
#1 n-Nonane (C9)

R.T.: 3.207 min  
 Delta R.T.: -0.023 min  
 Response: 2271636  
 Conc: 16.57 ug/ml

Instrument : FID\_E  
 ClientSampleId : 20 PPM ALIPHATIC HC STD

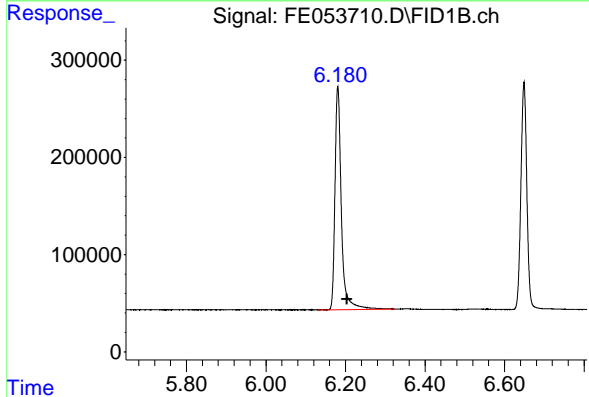
Manual Integrations  
 APPROVED

Reviewed By :Yogesh Patel 05/09/2025  
 Supervised By :mohammad ahmed 05/12/2025



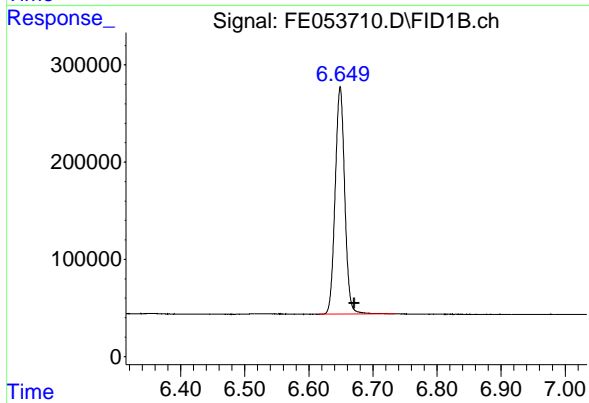
#2 n-Decane (C10)

R.T.: 4.468 min  
 Delta R.T.: -0.022 min  
 Response: 2387151  
 Conc: 17.26 ug/ml



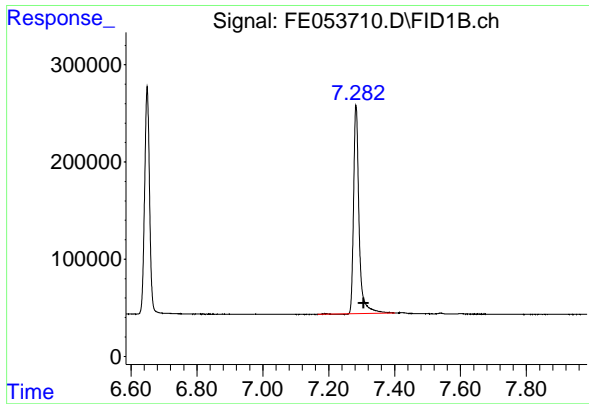
#3 A~Naphthalene (C11.7)

R.T.: 6.181 min  
 Delta R.T.: -0.022 min  
 Response: 2571249  
 Conc: 17.03 ug/ml



#4 n-Dodecane (C12)

R.T.: 6.649 min  
 Delta R.T.: -0.022 min  
 Response: 2426785  
 Conc: 17.30 ug/ml



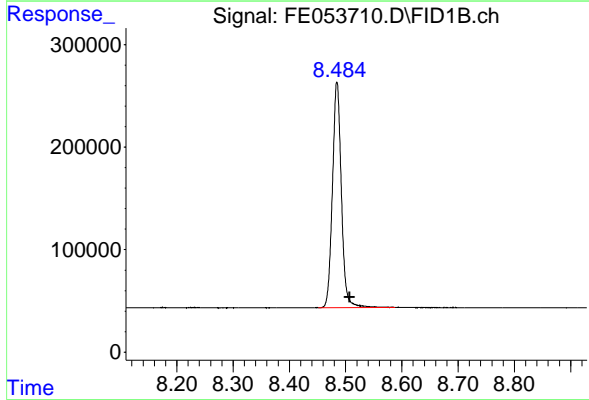
#5 A~2-methylnaphthalene (C12.89)

R.T.: 7.283 min  
 Delta R.T.: -0.023 min  
 Response: 2491548  
 Conc: 16.69 ug/ml

Instrument : FID\_E  
 ClientSampleId : 20 PPM ALIPHATIC HC STD

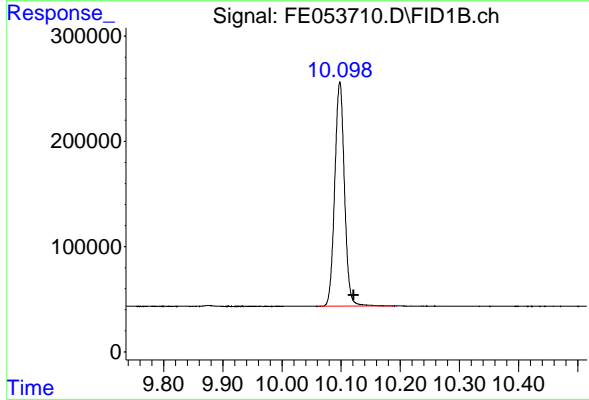
Manual Integrations  
 APPROVED

Reviewed By :Yogesh Patel 05/09/2025  
 Supervised By :mohammad ahmed 05/12/2025



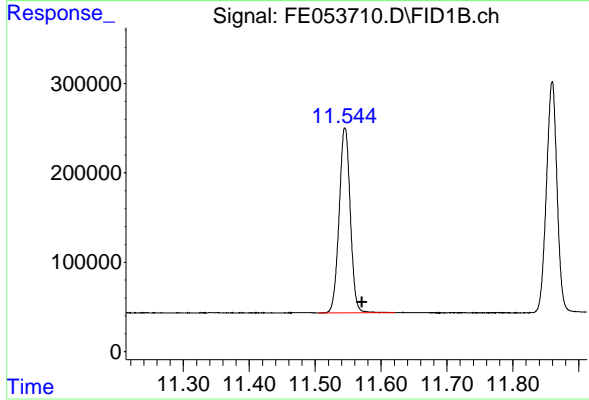
#6 n-Tetradecane (C14)

R.T.: 8.485 min  
 Delta R.T.: -0.023 min  
 Response: 2424405  
 Conc: 17.28 ug/ml



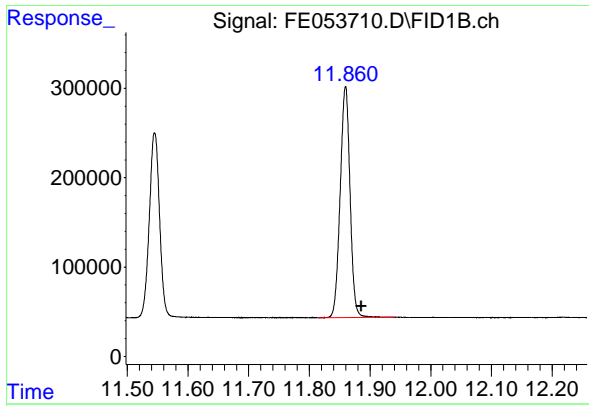
#7 n-Hexadecane (C16)

R.T.: 10.098 min  
 Delta R.T.: -0.023 min  
 Response: 2440863  
 Conc: 17.03 ug/ml



#8 n-Octadecane (C18)

R.T.: 11.545 min  
 Delta R.T.: -0.026 min  
 Response: 2427214  
 Conc: 16.66 ug/ml



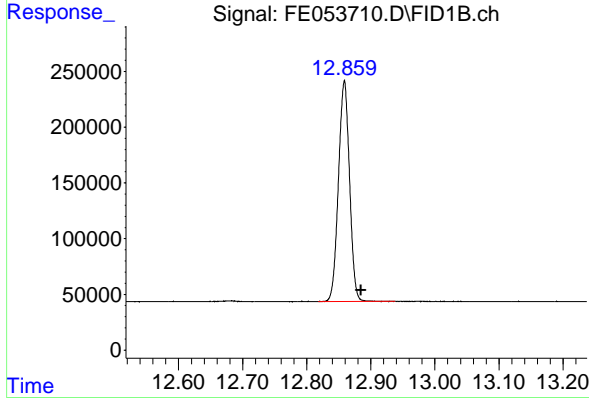
#9 ortho-Terphenyl (SURR)

R.T.: 11.860 min  
 Delta R.T.: -0.026 min  
 Response: 2915074  
 Conc: 16.16 ug/ml

Instrument : FID\_E  
 ClientSampleId : 20 PPM ALIPHATIC HC STD

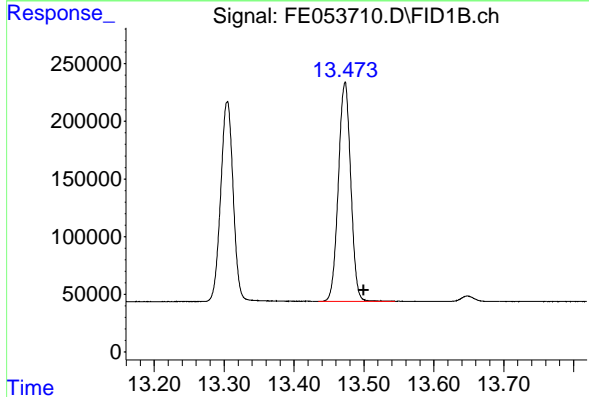
Manual Integrations  
 APPROVED

Reviewed By :Yogesh Patel 05/09/2025  
 Supervised By :mohammad ahmed 05/12/2025



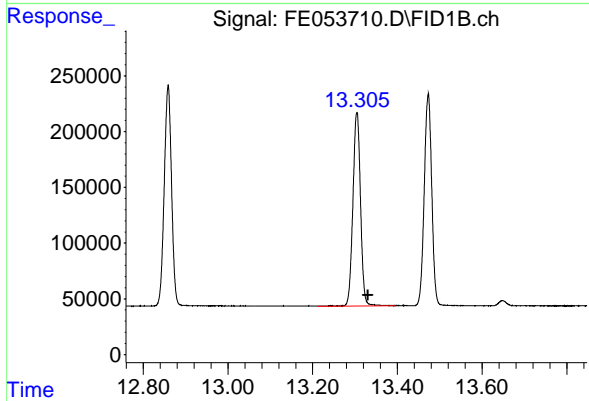
#10 n-Eicosane (C20)

R.T.: 12.859 min  
 Delta R.T.: -0.026 min  
 Response: 2368310  
 Conc: 16.28 ug/ml



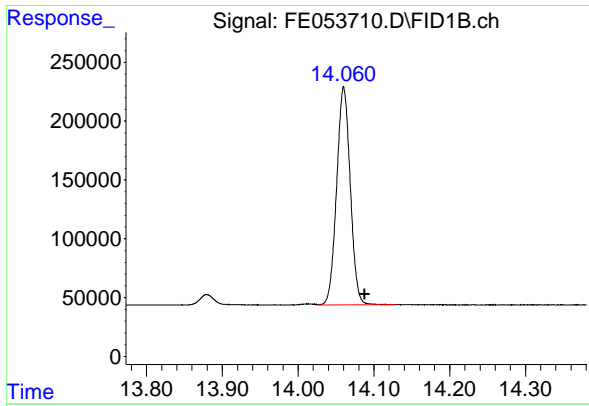
#11 n-Heneicosane (C21)

R.T.: 13.473 min  
 Delta R.T.: -0.026 min  
 Response: 2333914  
 Conc: 16.11 ug/ml



#12 1-chlorooctadecane (SURR)

R.T.: 13.305 min  
 Delta R.T.: -0.026 min  
 Response: 2185588  
 Conc: 16.17 ug/ml m



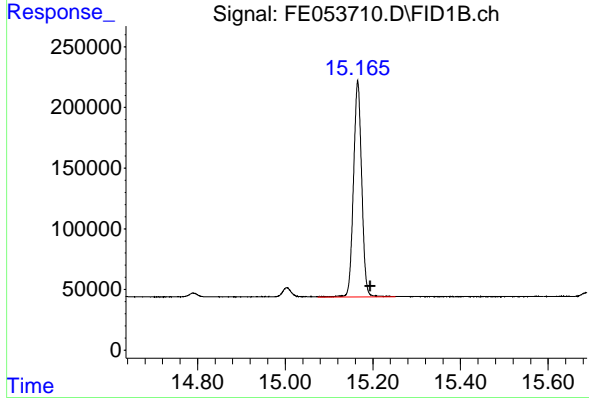
#13 n-Docosane (C22)

R.T.: 14.060 min  
 Delta R.T.: -0.027 min  
 Response: 2312655  
 Conc: 16.03 ug/ml

Instrument : FID\_E  
 Client Sample Id : 20 PPM ALIPHATIC HC STD

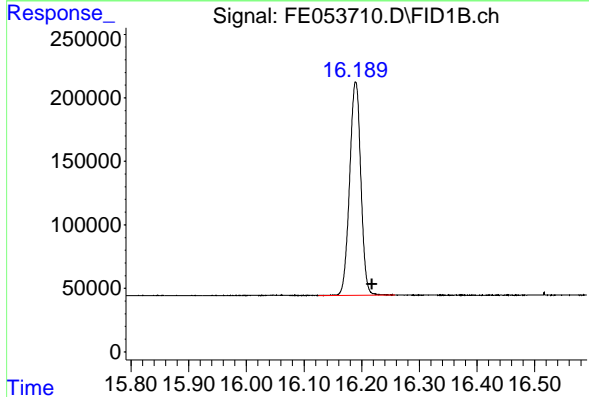
Manual Integrations  
 APPROVED

Reviewed By :Yogesh Patel 05/09/2025  
 Supervised By :mohammad ahmed 05/12/2025



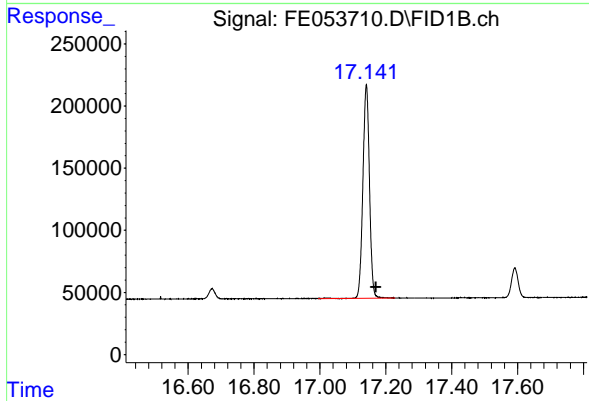
#14 n-Tetracosane (C24)

R.T.: 15.165 min  
 Delta R.T.: -0.029 min  
 Response: 2321006  
 Conc: 16.16 ug/ml m



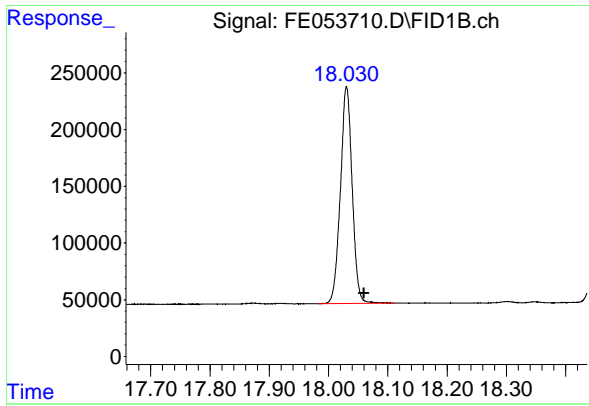
#15 n-Hexacosane (C26)

R.T.: 16.190 min  
 Delta R.T.: -0.028 min  
 Response: 2269592  
 Conc: 16.02 ug/ml



#16 n-Octacosane (C28)

R.T.: 17.141 min  
 Delta R.T.: -0.029 min  
 Response: 2371970  
 Conc: 17.05 ug/ml



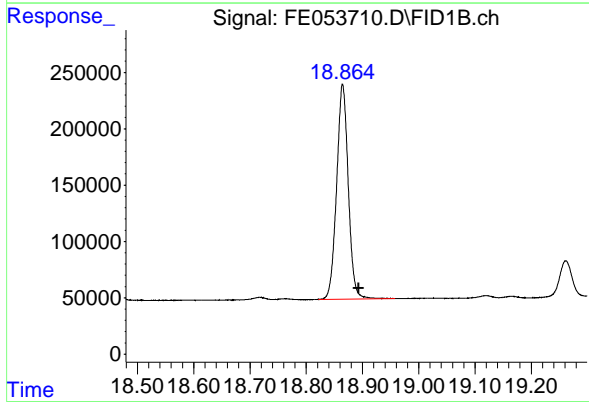
#17 n-Tricontane (C30)

R.T.: 18.030 min  
 Delta R.T.: -0.030 min  
 Response: 2640637  
 Conc: 18.97 ug/ml

Instrument :  
 FID\_E  
 ClientSampleId :  
 20 PPM ALIPHATIC HC STD

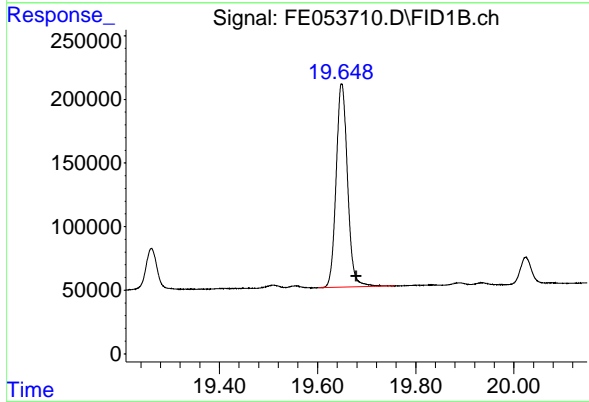
Manual Integrations  
 APPROVED

Reviewed By :Yogesh Patel 05/09/2025  
 Supervised By :mohammad ahmed 05/12/2025



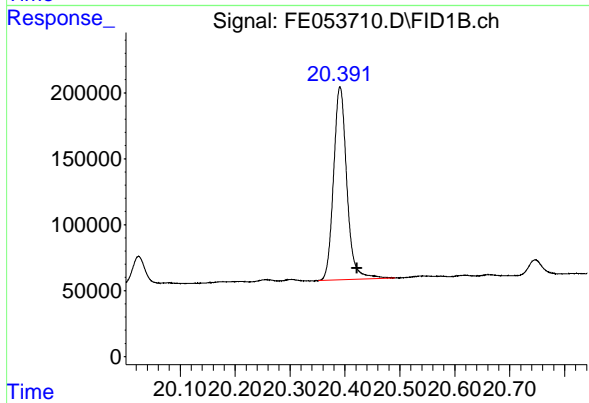
#18 n-Dotriacontane (C32)

R.T.: 18.865 min  
 Delta R.T.: -0.029 min  
 Response: 2739173  
 Conc: 19.95 ug/ml



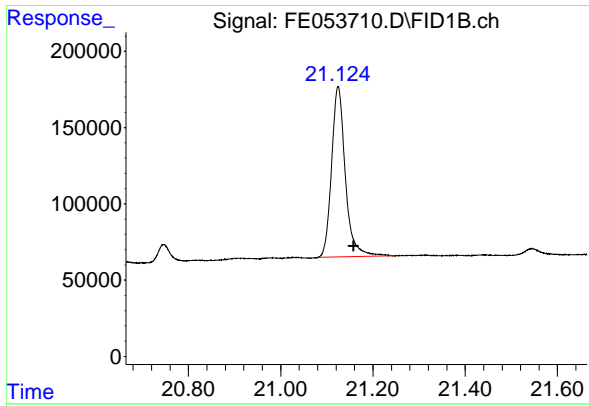
#19 n-Tetracontane (C34)

R.T.: 19.649 min  
 Delta R.T.: -0.030 min  
 Response: 2585220  
 Conc: 19.84 ug/ml



#20 n-Hexatriacontane (C36)

R.T.: 20.391 min  
 Delta R.T.: -0.031 min  
 Response: 2458614  
 Conc: 19.47 ug/ml



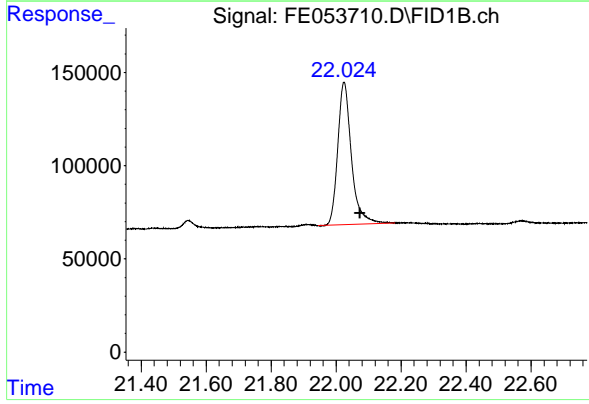
#21 n-Octatriacontane (C38)

R.T.: 21.125 min  
 Delta R.T.: -0.033 min  
 Response: 2312551  
 Conc: 18.98 ug/ml

Instrument : FID\_E  
 ClientSampleId : 20 PPM ALIPHATIC HC STD

Manual Integrations  
 APPROVED

Reviewed By :Yogesh Patel 05/09/2025  
 Supervised By :mohammad ahmed 05/12/2025



#22 n-Tetracontane (C40)

R.T.: 22.024 min  
 Delta R.T.: -0.049 min  
 Response: 2229456  
 Conc: 18.67 ug/ml