

Data Path : Z:\pestpcbsrv\HPCHEM1\FID_E\Data\FE051024AL\
 Data File : FE048095.D
 Signal(s) : FID1B.ch
 Acq On : 10 May 2024 20:05
 Operator : YP\AJ
 Sample : P2423-05
 Misc :
 ALS Vial : 18 Sample Multiplier: 1

Instrument :
 FID_E
 ClientSampleId :
 WC-HH

Integration File: autoint1.e
 Quant Time: May 11 02:08:58 2024
 Quant Method : Z:\pestpcbsrv\HPCHEM1\FID_E\methods\Aliphatic EPH 042724.M
 Quant Title : GC Extractables
 QLast Update : Mon Apr 29 03:29:12 2024
 Response via : Initial Calibration
 Integrator: ChemStation

Volume Inj. : 1 ul
 Signal Phase : Rxi-1ms
 Signal Info : 20M x 0.18mm x 0.18um

Compound	R.T.	Response	Conc Units

System Monitoring Compounds			
9) S ortho-Terphenyl (SURR)	11.961	3772922	26.153 ug/ml
Spiked Amount	50.000	Recovery	= 52.31%
12) S 1-chlorooctadecane (S...	13.394	3099575	27.739 ug/ml
Spiked Amount	50.000	Recovery	= 55.48%

Target Compounds

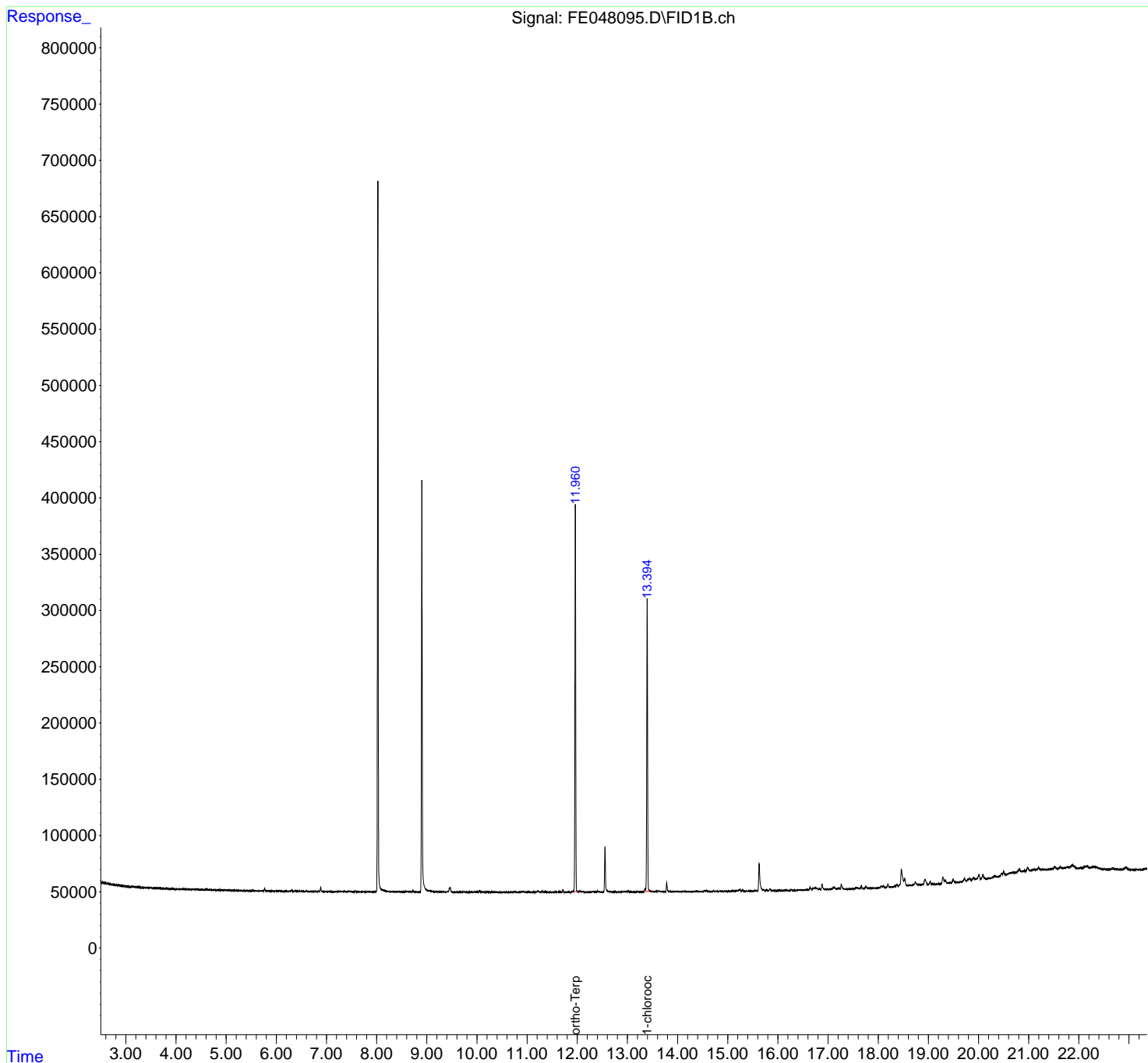
(f)=RT Delta > 1/2 Window (m)=manual int.

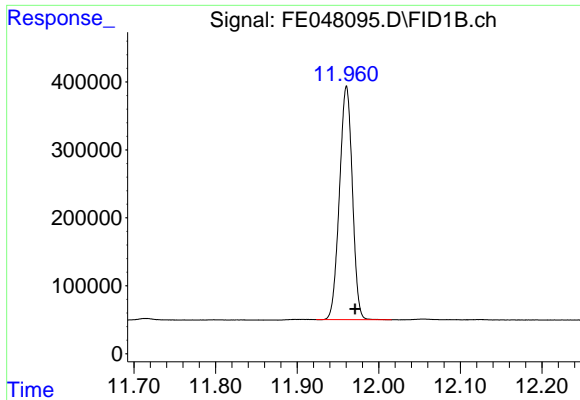
Data Path : Z:\pestpcbsrv\HPCHEM1\FID_E\Data\FE051024AL\
 Data File : FE048095.D
 Signal(s) : FID1B.ch
 Acq On : 10 May 2024 20:05
 Operator : YP\AJ
 Sample : P2423-05
 Misc :
 ALS Vial : 18 Sample Multiplier: 1

Instrument :
 FID_E
 ClientSampleId :
 WC-HH

Integration File: autoint1.e
 Quant Time: May 11 02:08:58 2024
 Quant Method : Z:\pestpcbsrv\HPCHEM1\FID_E\methods\Aliphatic EPH 042724.M
 Quant Title : GC Extractables
 QLast Update : Mon Apr 29 03:29:12 2024
 Response via : Initial Calibration
 Integrator: ChemStation

Volume Inj. : 1 ul
 Signal Phase : Rxi-1ms
 Signal Info : 20M x 0.18mm x 0.18um

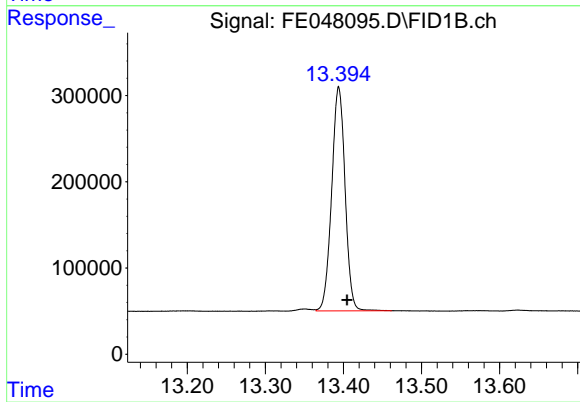




#9 ortho-Terphenyl (SURR)

R.T.: 11.961 min
Delta R.T.: -0.010 min
Response: 3772922
Conc: 26.15 ug/ml

Instrument :
FID_E
ClientSampleId :
WC-HH



#12 1-chlorooctadecane (SURR)

R.T.: 13.394 min
Delta R.T.: -0.011 min
Response: 3099575
Conc: 27.74 ug/ml