

Data Path : Z:\pestpcbsrv\HPCHEM1\FID\_E\Data\FE051223AL\  
 Data File : FE041898.D  
 Signal(s) : FID1B.ch  
 Acq On : 12 May 2023 23:47  
 Operator : YP\AJ  
 Sample : 02760-02MSD  
 Misc :  
 ALS Vial : 27 Sample Multiplier: 1

**Instrument :**  
 FID\_E  
**ClientSampleId :**  
 HR-2-051123-EPH-2MSD

**Manual Integrations**  
**APPROVED**

Reviewed By :Yogesh Patel 05/15/2023  
 Supervised By :Ankita Jodhani 05/16/2023

Integration File: autoint1.e  
 Quant Time: May 13 01:53:03 2023  
 Quant Method : Z:\pestpcbsrv\HPCHEM1\FID\_E\methods\Aliphatic EPH 042123.M  
 Quant Title : GC Extractables  
 QLast Update : Fri Apr 21 07:33:51 2023  
 Response via : Initial Calibration  
 Integrator: ChemStation

Volume Inj. : 1 ul  
 Signal Phase : Rxi-1ms  
 Signal Info : 20M x 0.18mm x 0.18um

Compound	R.T.	Response	Conc Units
-----			
System Monitoring Compounds			
9) S ortho-Terphenyl (SURR)	11.972	3948848	21.048 ug/ml
Spiked Amount	50.000	Recovery =	42.10%
12) S 1-chlorooctadecane (S...	13.399	9143142	64.721 ug/ml
Spiked Amount	50.000	Recovery =	129.44%
Target Compounds			
1) T n-Nonane (C9)	3.350	3810458	25.922 ug/ml
2) T n-Decane (C10)	4.604	4353476	29.027 ug/ml
3) T A~Naphthalene (C11.7)	6.309	5398817	32.623 ug/ml
4) T n-Dodecane (C12)	6.772	5265370	34.631 ug/ml
5) T A~2-methylnaphthalene...	7.407	5638891	34.970 ug/ml
6) T n-Tetradecane (C14)	8.603	5797141	38.163 ug/ml
7) T n-Hexadecane (C16)	10.211	6182633	38.742 ug/ml
8) T n-Octadecane (C18)	11.654	6351903	38.752 ug/ml
10) T n-Eicosane (C20)	12.965	6289844	39.105 ug/ml
11) T n-Heneicosane (C21)	13.577	6141634	38.537 ug/ml
13) T n-Docosane (C22)	14.164	6040757	37.914 ug/ml
14) T n-Tetracosane (C24)	15.256	11241033	69.725 ug/ml
15) T n-Hexacosane (C26)	16.289	5656112	35.776 ug/ml
16) T n-Octacosane (C28)	17.238	5511133	35.816 ug/ml
17) T n-Tricontane (C30)	18.126	5385561	35.361 ug/ml
18) T n-Dotriacontane (C32)	18.958	5246236	35.215 ug/ml
19) T n-Tetratriacontane (C34)	19.741	5189525	36.837 ug/ml
20) T n-Hexatriacontane (C36)	20.482	4928539	36.855 ug/mlm
21) T n-Octatriacontane (C38)	21.234	5053123	38.242 ug/mlm
22) T n-Tetracontane (C40)	22.175	5240793	41.393 ug/mlm

(f)=RT Delta > 1/2 Window

(m)=manual int.

Data Path : Z:\pestpcbsrv\HPCHEM1\FID\_E\Data\FE051223AL\  
 Data File : FE041898.D  
 Signal(s) : FID1B.ch  
 Acq On : 12 May 2023 23:47  
 Operator : YP\AJ  
 Sample : 02760-02MSD  
 Misc :  
 ALS Vial : 27 Sample Multiplier: 1

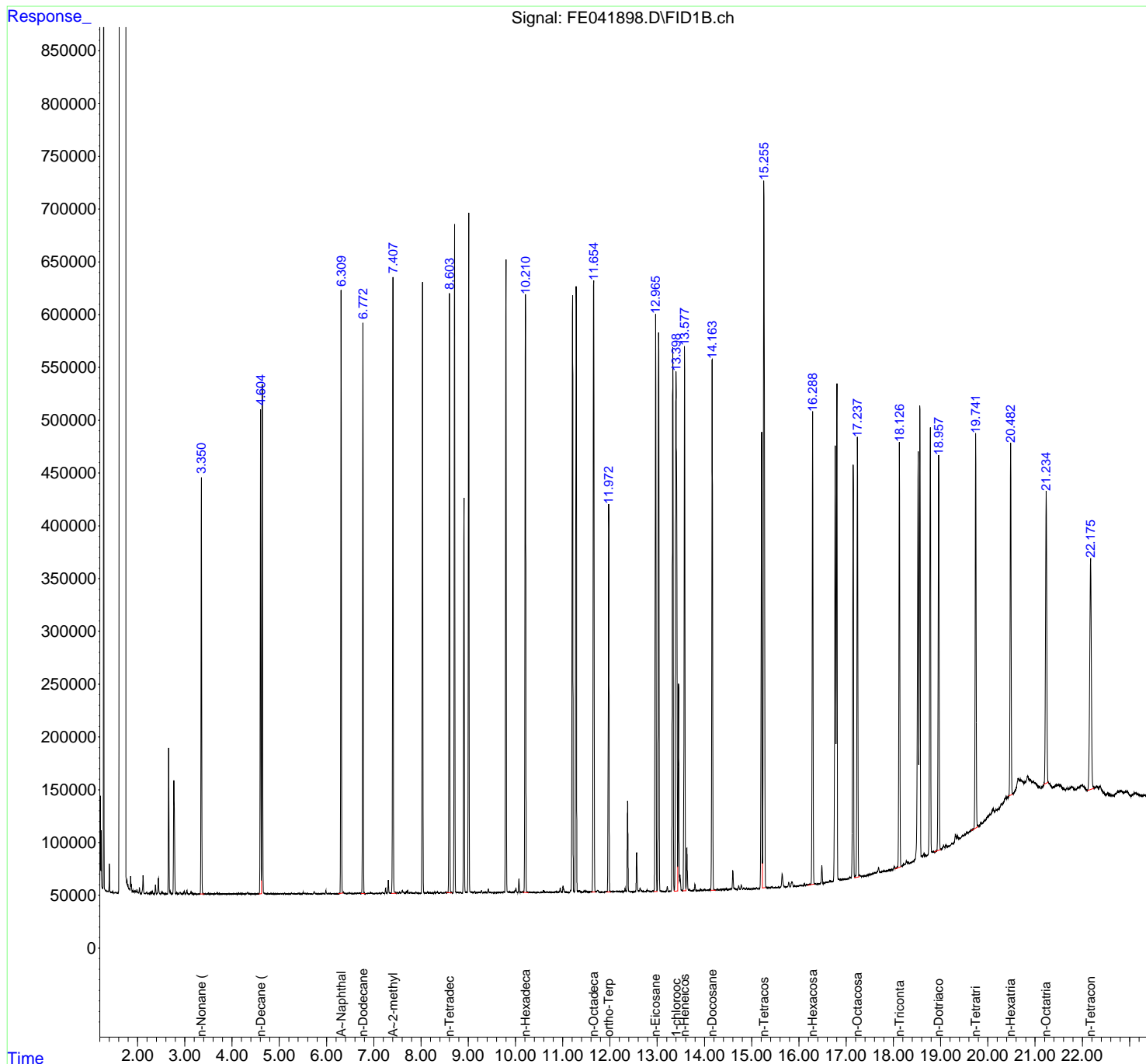
Instrument :  
 FID\_E  
 ClientSampleId :  
 HR-2-051123-EPH-2MSD

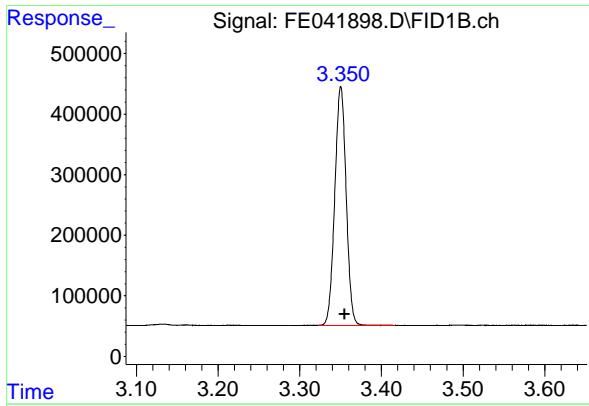
Manual Integrations  
 APPROVED

Reviewed By :Yogesh Patel 05/15/2023  
 Supervised By :Ankita Jodhani 05/16/2023

Integration File: autoint1.e  
 Quant Time: May 13 01:53:03 2023  
 Quant Method : Z:\pestpcbsrv\HPCHEM1\FID\_E\methods\Aliphatic EPH 042123.  
 Quant Title : GC Extractables  
 QLast Update : Fri Apr 21 07:33:51 2023  
 Response via : Initial Calibration  
 Integrator: ChemStation

Volume Inj. : 1 ul  
 Signal Phase : Rxi-1ms  
 Signal Info : 20M x 0.18mm x 0.18um





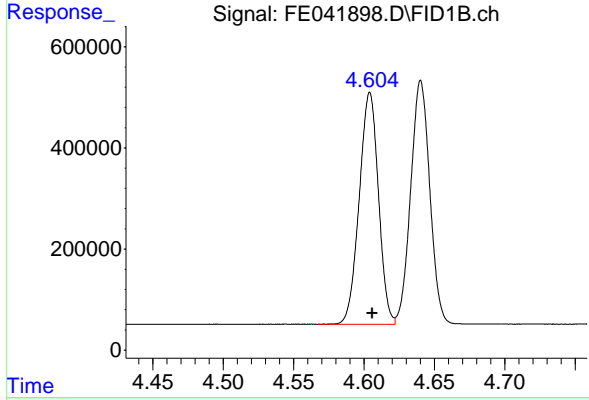
#1 n-Nonane (C9)

R.T.: 3.350 min  
 Delta R.T.: -0.005 min  
 Response: 3810458  
 Conc: 25.92 ug/ml

Instrument : FID\_E  
 Client Sample Id : HR-2-051123-EPH-2MSD

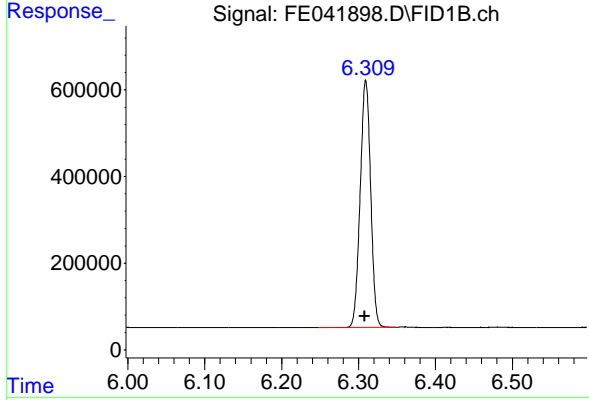
Manual Integrations  
 APPROVED

Reviewed By :Yogesh Patel 05/15/2023  
 Supervised By :Ankita Jodhani 05/16/2023



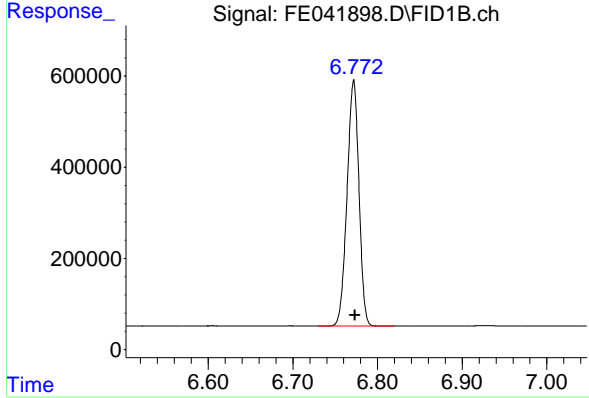
#2 n-Decane (C10)

R.T.: 4.604 min  
 Delta R.T.: -0.002 min  
 Response: 4353476  
 Conc: 29.03 ug/ml



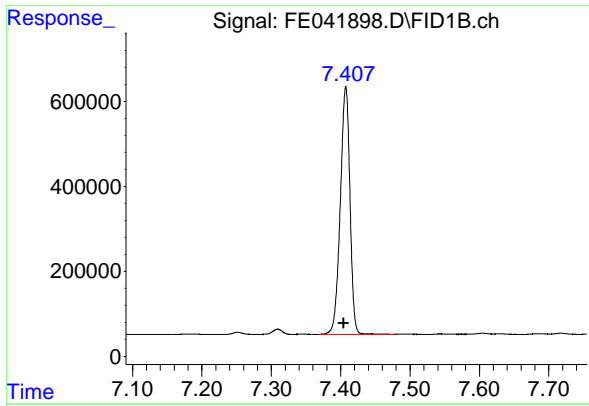
#3 A~Naphthalene (C11.7)

R.T.: 6.309 min  
 Delta R.T.: 0.001 min  
 Response: 5398817  
 Conc: 32.62 ug/ml



#4 n-Dodecane (C12)

R.T.: 6.772 min  
 Delta R.T.: -0.002 min  
 Response: 5265370  
 Conc: 34.63 ug/ml



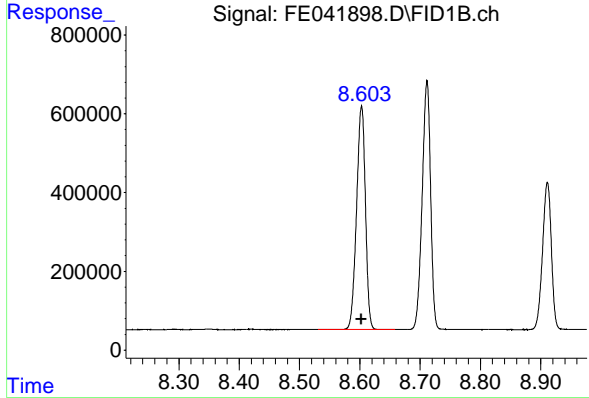
#5 A~2-methylnaphthalene (C12.89)

R.T.: 7.407 min  
 Delta R.T.: 0.003 min  
 Response: 5638891  
 Conc: 34.97 ug/ml

Instrument : FID\_E  
 Client Sample Id : HR-2-051123-EPH-2MSD

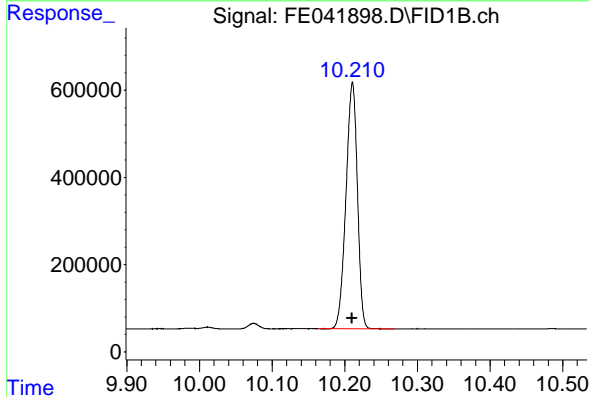
Manual Integrations  
 APPROVED

Reviewed By :Yogesh Patel 05/15/2023  
 Supervised By :Ankita Jodhani 05/16/2023



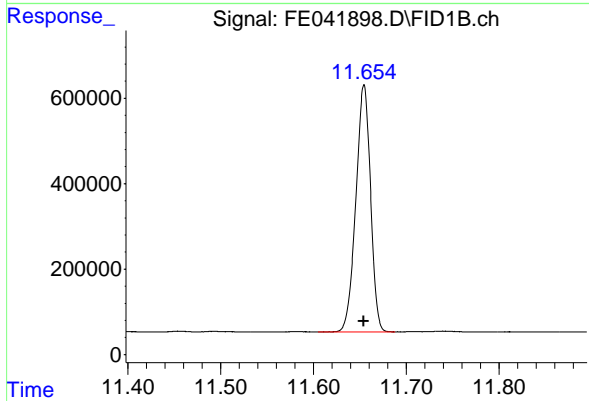
#6 n-Tetradecane (C14)

R.T.: 8.603 min  
 Delta R.T.: 0.000 min  
 Response: 5797141  
 Conc: 38.16 ug/ml



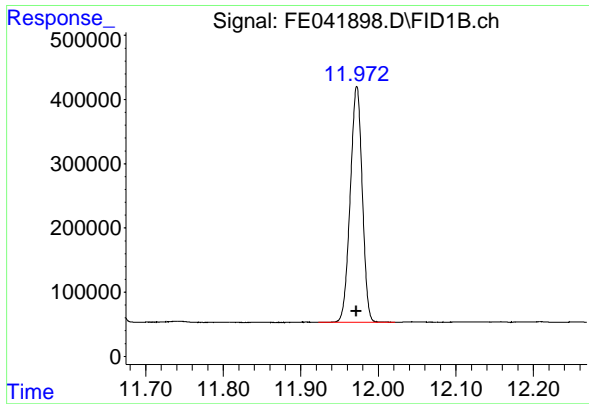
#7 n-Hexadecane (C16)

R.T.: 10.211 min  
 Delta R.T.: 0.000 min  
 Response: 6182633  
 Conc: 38.74 ug/ml



#8 n-Octadecane (C18)

R.T.: 11.654 min  
 Delta R.T.: 0.000 min  
 Response: 6351903  
 Conc: 38.75 ug/ml



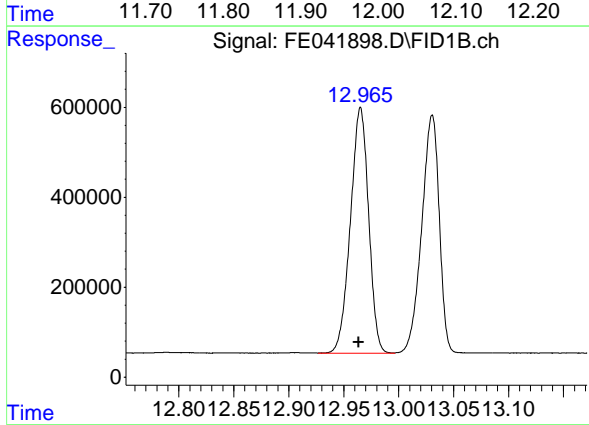
#9 ortho-Terphenyl (SURR)

R.T.: 11.972 min  
 Delta R.T.: 0.000 min  
 Response: 3948848  
 Conc: 21.05 ug/ml

Instrument : FID\_E  
 Client Sample Id : HR-2-051123-EPH-2MSD

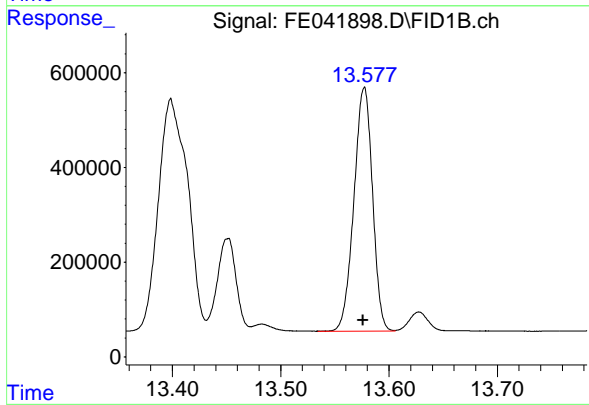
Manual Integrations  
 APPROVED

Reviewed By :Yogesh Patel 05/15/2023  
 Supervised By :Ankita Jodhani 05/16/2023



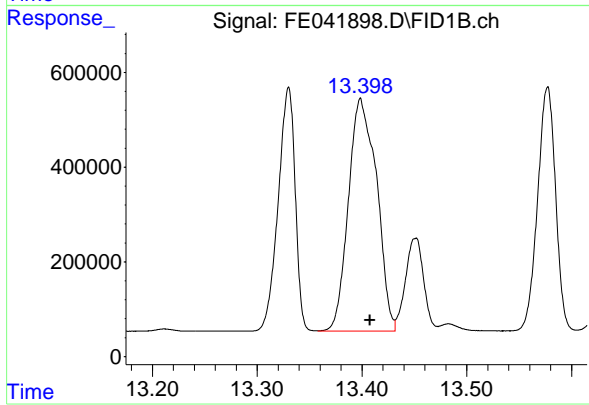
#10 n-Eicosane (C20)

R.T.: 12.965 min  
 Delta R.T.: 0.002 min  
 Response: 6289844  
 Conc: 39.10 ug/ml



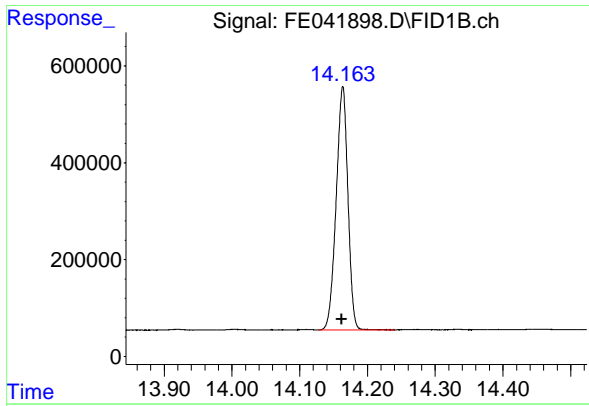
#11 n-Heneicosane (C21)

R.T.: 13.577 min  
 Delta R.T.: 0.001 min  
 Response: 6141634  
 Conc: 38.54 ug/ml



#12 1-chlorooctadecane (SURR)

R.T.: 13.399 min  
 Delta R.T.: -0.009 min  
 Response: 9143142  
 Conc: 64.72 ug/ml



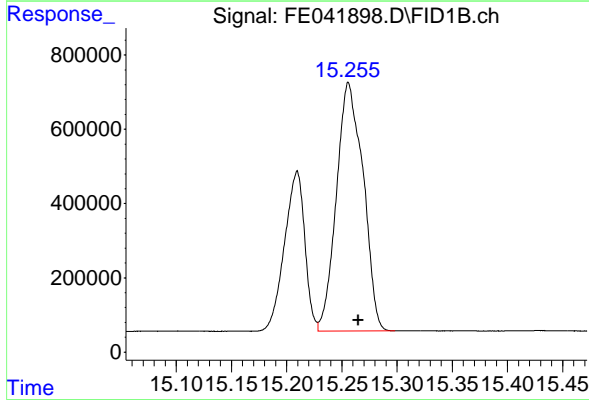
#13 n-Docosane (C22)

R.T.: 14.164 min  
 Delta R.T.: 0.002 min  
 Response: 6040757  
 Conc: 37.91 ug/ml

Instrument : FID\_E  
 Client Sample Id : HR-2-051123-EPH-2MSD

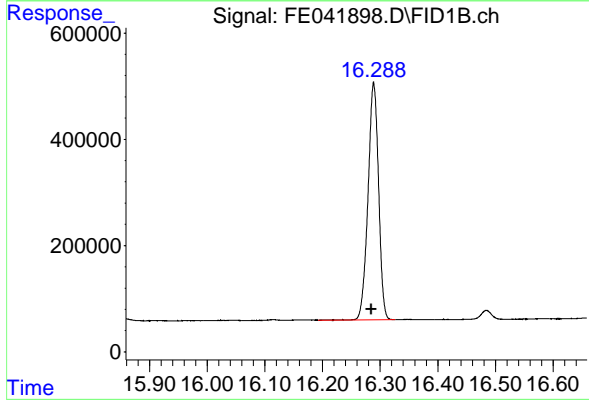
Manual Integrations  
 APPROVED

Reviewed By :Yogesh Patel 05/15/2023  
 Supervised By :Ankita Jodhani 05/16/2023



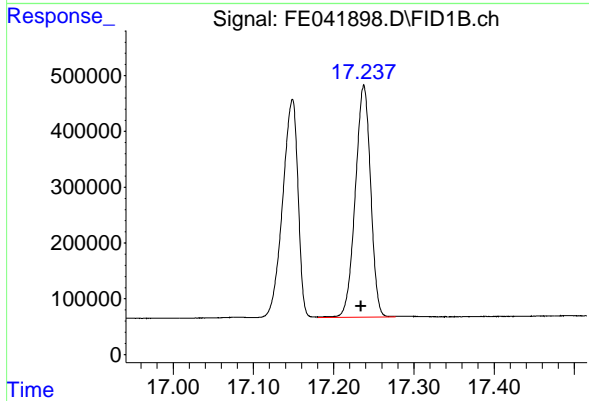
#14 n-Tetracosane (C24)

R.T.: 15.256 min  
 Delta R.T.: -0.009 min  
 Response: 11241033  
 Conc: 69.72 ug/ml



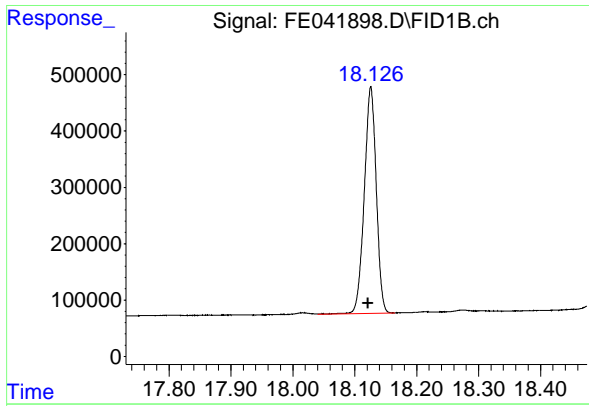
#15 n-Hexacosane (C26)

R.T.: 16.289 min  
 Delta R.T.: 0.004 min  
 Response: 5656112  
 Conc: 35.78 ug/ml



#16 n-Octacosane (C28)

R.T.: 17.238 min  
 Delta R.T.: 0.004 min  
 Response: 5511133  
 Conc: 35.82 ug/ml



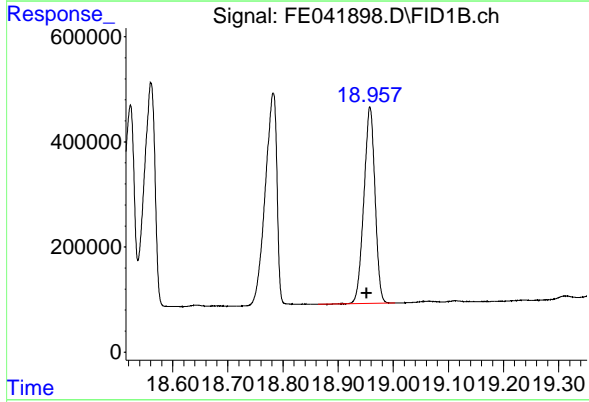
#17 n-Tricontane (C30)

R.T.: 18.126 min  
 Delta R.T.: 0.004 min  
 Response: 5385561  
 Conc: 35.36 ug/ml

Instrument : FID\_E  
 ClientSampleId : HR-2-051123-EPH-2MSD

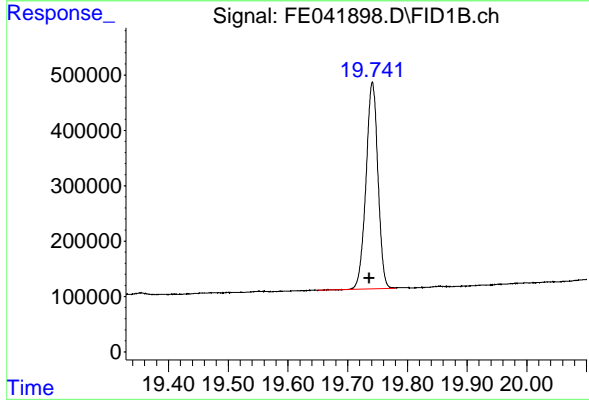
Manual Integrations  
 APPROVED

Reviewed By :Yogesh Patel 05/15/2023  
 Supervised By :Ankita Jodhani 05/16/2023



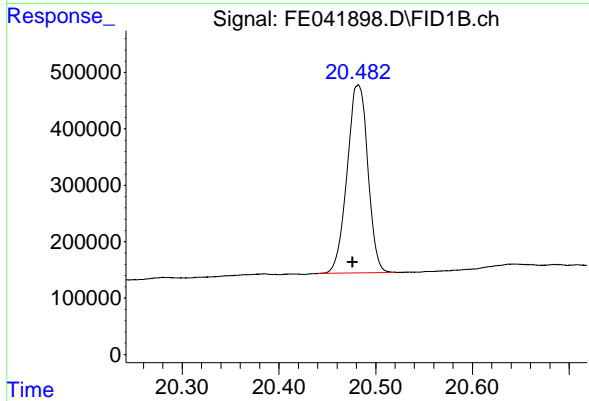
#18 n-Dotriacontane (C32)

R.T.: 18.958 min  
 Delta R.T.: 0.006 min  
 Response: 5246236  
 Conc: 35.21 ug/ml



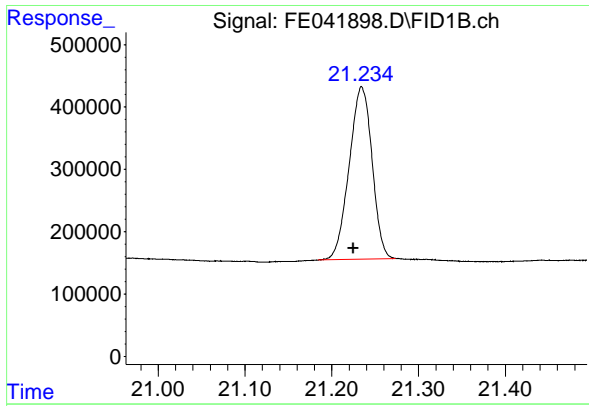
#19 n-Tetracontane (C34)

R.T.: 19.741 min  
 Delta R.T.: 0.005 min  
 Response: 5189525  
 Conc: 36.84 ug/ml



#20 n-Hexatriacontane (C36)

R.T.: 20.482 min  
 Delta R.T.: 0.006 min  
 Response: 4928539  
 Conc: 36.85 ug/ml m



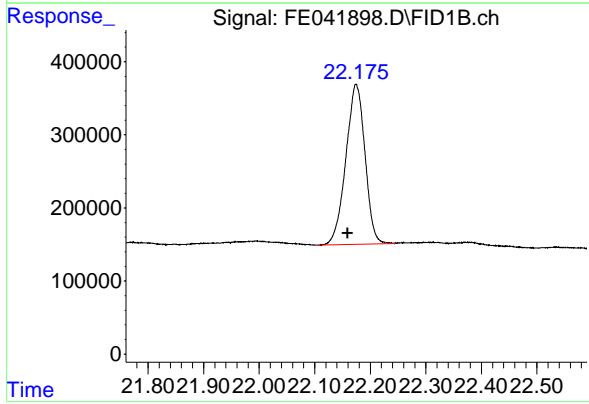
#21 n-Octatriacontane (C38)

R.T.: 21.234 min  
Delta R.T.: 0.009 min  
Response: 5053123  
Conc: 38.24 ug/ml

Instrument : FID\_E  
ClientSampleId : HR-2-051123-EPH-2MSD

Manual Integrations  
APPROVED

Reviewed By :Yogesh Patel 05/15/2023  
Supervised By :Ankita Jodhani 05/16/2023



#22 n-Tetracontane (C40)

R.T.: 22.175 min  
Delta R.T.: 0.016 min  
Response: 5240793  
Conc: 41.39 ug/ml m