

Data Path : Z:\pestpcbsrv\HPCHEM1\FID\_E\Data\FE051424AL\  
 Data File : FE048167.D  
 Signal(s) : FID1B.ch  
 Acq On : 14 May 2024 18:33  
 Operator : YP\AJ  
 Sample : P2469-01  
 Misc :  
 ALS Vial : 15 Sample Multiplier: 1

Instrument :  
 FID\_E  
 ClientSampleId :

Integration File: autoint1.e  
 Quant Time: May 15 05:56:43 2024  
 Quant Method : Z:\pestpcbsrv\HPCHEM1\FID\_E\methods\Aliphatic EPH 042724.M  
 Quant Title : GC Extractables  
 QLast Update : Mon Apr 29 03:29:12 2024  
 Response via : Initial Calibration  
 Integrator: ChemStation

Volume Inj. : 1 ul  
 Signal Phase : Rxi-1ms  
 Signal Info : 20M x 0.18mm x 0.18um

Compound	R.T.	Response	Conc Units
-----			
System Monitoring Compounds			
9) S ortho-Terphenyl (SURR)	11.960	6626328	45.932 ug/ml
Spiked Amount	50.000	Recovery =	91.86%
12) S 1-chlorooctadecane (S...	13.393	5372023	48.076 ug/ml
Spiked Amount	50.000	Recovery =	96.15%
Target Compounds			
10) T n-Eicosane (C20)	13.008	53404	0.397 ug/ml
15) T n-Hexacosane (C26)	16.263	50214	0.376 ug/ml
16) T n-Octacosane (C28)	17.213	29675	0.223 ug/ml
17) T n-Tricontane (C30)	18.098	202918	1.470 ug/ml
18) T n-Dotriacontane (C32)	18.928	231145	1.673 ug/ml
19) T n-Tetratriacontane (C34)	19.714	126163	0.926 ug/ml
20) T n-Hexatriacontane (C36)	20.452	76653	0.566 ug/ml
22) T n-Tetracontane (C40)	22.112	65838	0.473 ug/ml
-----			

(f)=RT Delta > 1/2 Window

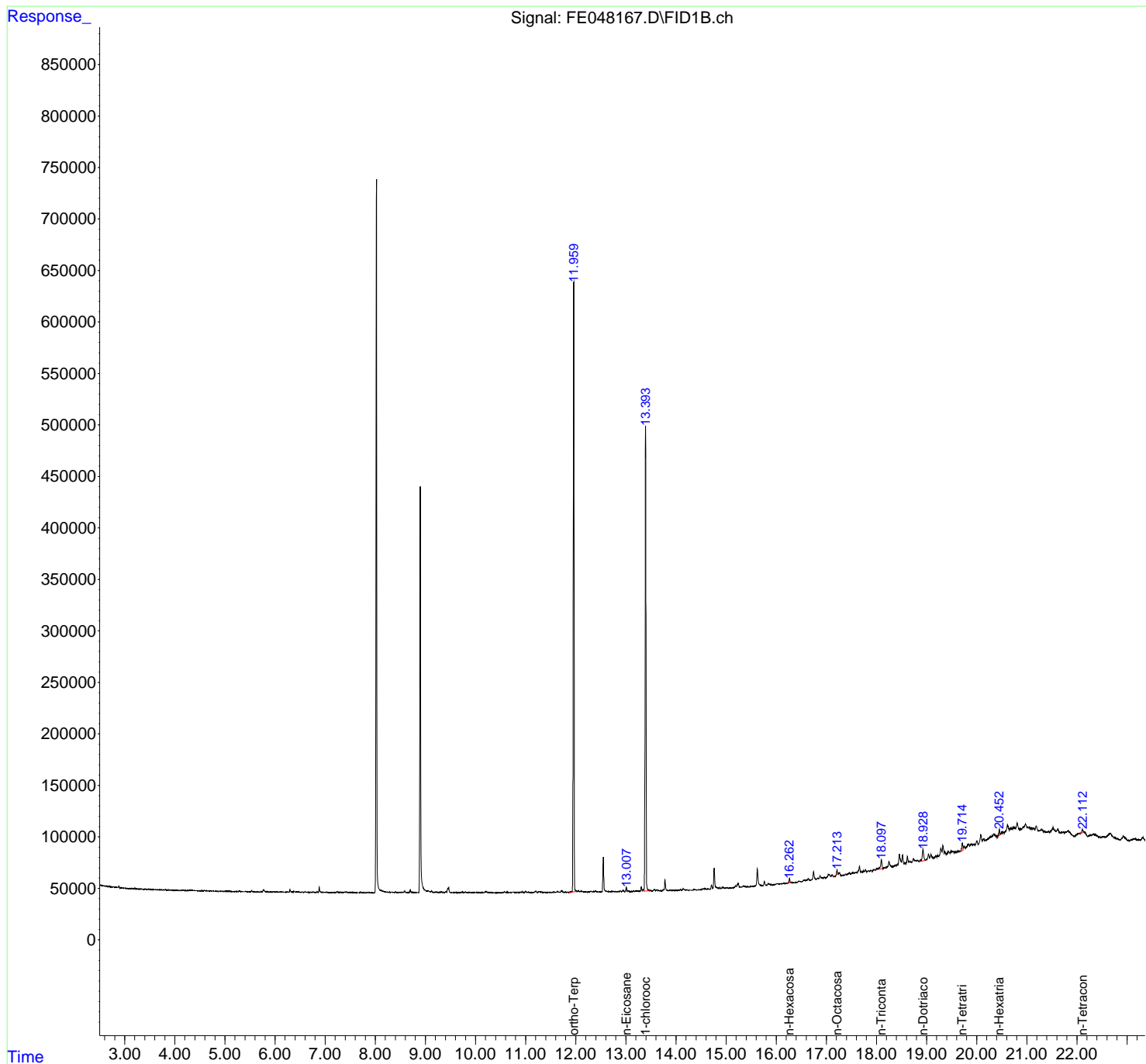
(m)=manual int.

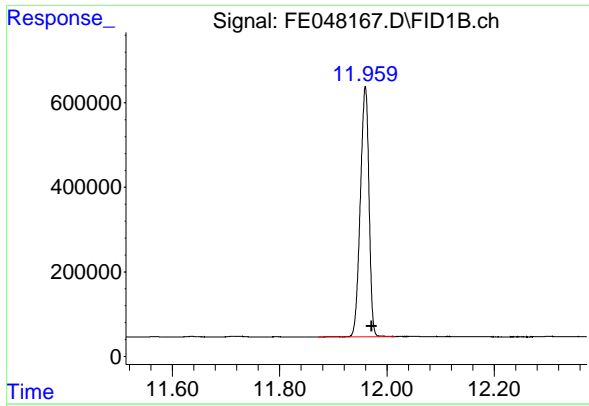
Data Path : Z:\pestpcbsrv\HPCHEM1\FID\_E\Data\FE051424AL\  
 Data File : FE048167.D  
 Signal(s) : FID1B.ch  
 Acq On : 14 May 2024 18:33  
 Operator : YP\AJ  
 Sample : P2469-01  
 Misc :  
 ALS Vial : 15 Sample Multiplier: 1

Instrument :  
 FID\_E  
 ClientSampleId :

Integration File: autoint1.e  
 Quant Time: May 15 05:56:43 2024  
 Quant Method : Z:\pestpcbsrv\HPCHEM1\FID\_E\methods\Aliphatic EPH 042724.M  
 Quant Title : GC Extractables  
 QLast Update : Mon Apr 29 03:29:12 2024  
 Response via : Initial Calibration  
 Integrator: ChemStation

Volume Inj. : 1 ul  
 Signal Phase : Rxi-1ms  
 Signal Info : 20M x 0.18mm x 0.18um

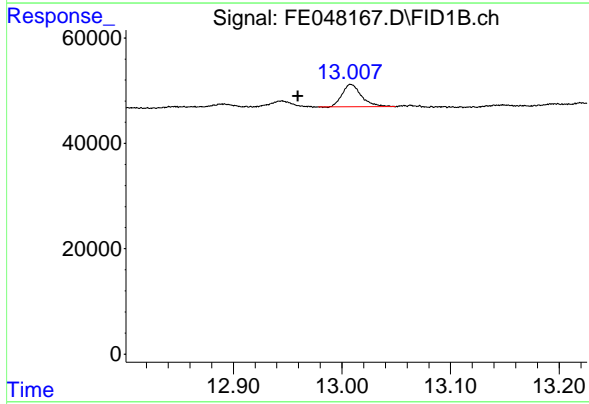




#9 ortho-Terphenyl (SURR)

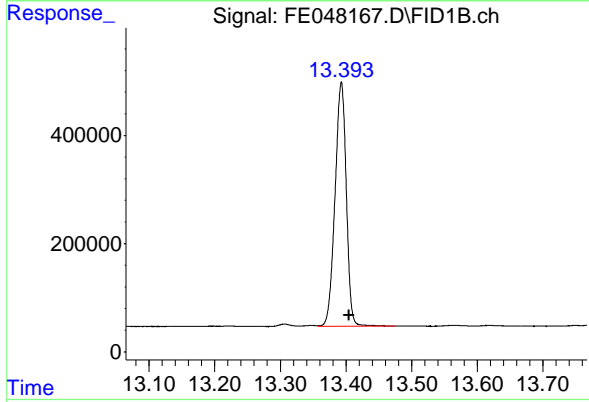
R.T.: 11.960 min  
 Delta R.T.: -0.011 min  
 Response: 6626328  
 Conc: 45.93 ug/ml

Instrument :  
 FID\_E  
 ClientSampleId :



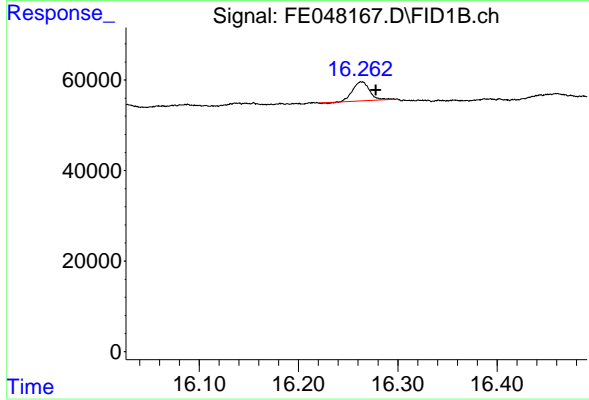
#10 n-Eicosane (C20)

R.T.: 13.008 min  
 Delta R.T.: 0.048 min  
 Response: 53404  
 Conc: 0.40 ug/ml



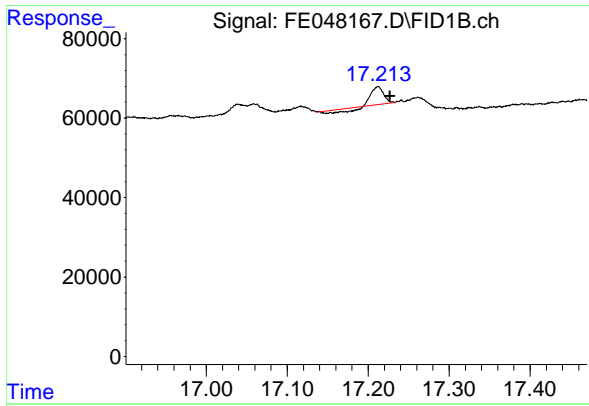
#12 1-chlorooctadecane (SURR)

R.T.: 13.393 min  
 Delta R.T.: -0.012 min  
 Response: 5372023  
 Conc: 48.08 ug/ml



#15 n-Hexacosane (C26)

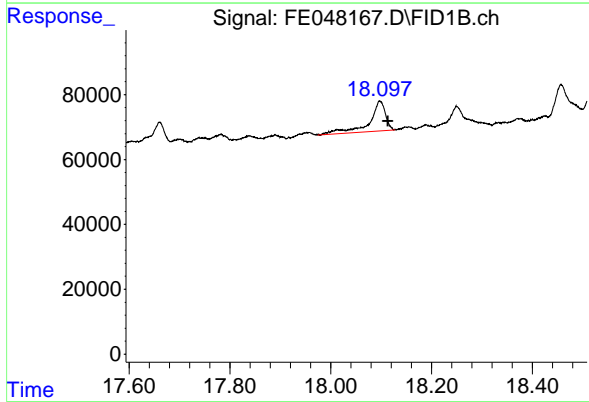
R.T.: 16.263 min  
 Delta R.T.: -0.015 min  
 Response: 50214  
 Conc: 0.38 ug/ml



#16 n-Octacosane (C28)

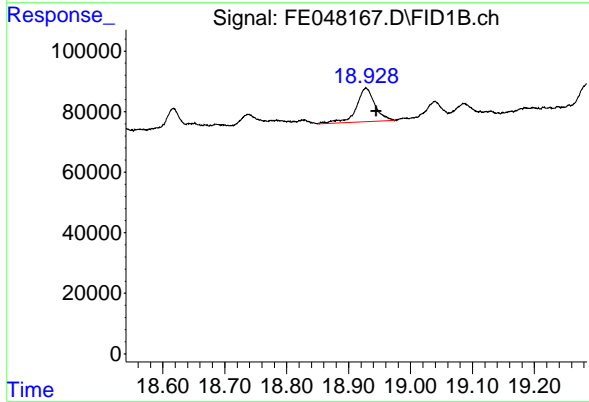
R.T.: 17.213 min  
Delta R.T.: -0.015 min  
Response: 29675  
Conc: 0.22 ug/ml

Instrument :  
FID\_E  
ClientSampleId :



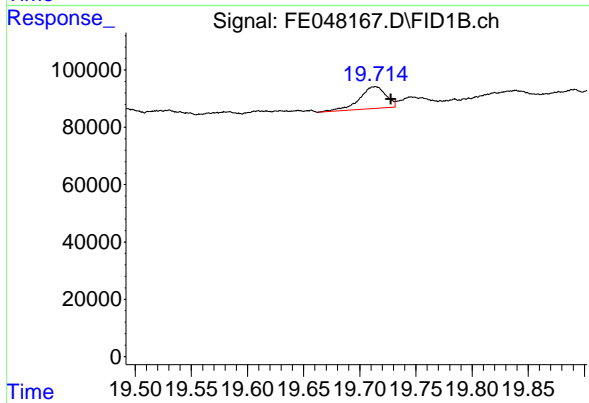
#17 n-Tricontane (C30)

R.T.: 18.098 min  
Delta R.T.: -0.016 min  
Response: 202918  
Conc: 1.47 ug/ml



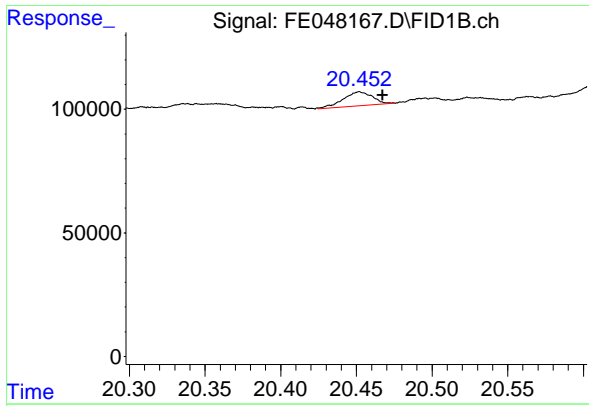
#18 n-Dotriacontane (C32)

R.T.: 18.928 min  
Delta R.T.: -0.017 min  
Response: 231145  
Conc: 1.67 ug/ml



#19 n-Tetratriacontane (C34)

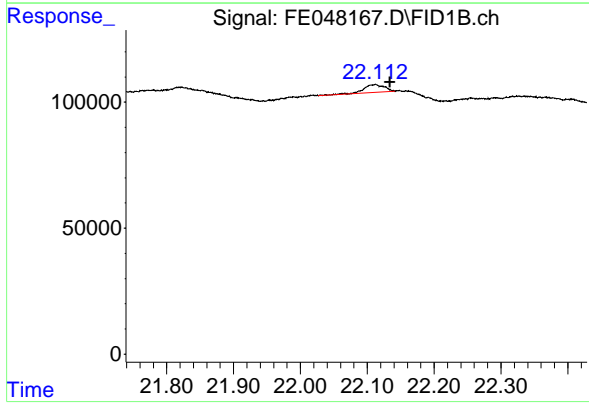
R.T.: 19.714 min  
Delta R.T.: -0.014 min  
Response: 126163  
Conc: 0.93 ug/ml



#20 n-Hexatriacontane (C36)

R.T.: 20.452 min  
Delta R.T.: -0.015 min  
Response: 76653  
Conc: 0.57 ug/ml

Instrument :  
FID\_E  
ClientSampleId :



#22 n-Tetracontane (C40)

R.T.: 22.112 min  
Delta R.T.: -0.022 min  
Response: 65838  
Conc: 0.47 ug/ml