

Data Path : Z:\pestpcbsrv\HPCHEM1\FID\_E\Data\FE051524AL\  
 Data File : FE048190.D  
 Signal(s) : FID1B.ch  
 Acq On : 15 May 2024 16:44  
 Operator : YP\AJ  
 Sample : P2476-01  
 Misc :  
 ALS Vial : 11 Sample Multiplier: 1

Instrument :  
 FID\_E  
 ClientSampleId :  
 WC-1-COMP

Integration File: autoint1.e  
 Quant Time: May 16 03:14:56 2024  
 Quant Method : Z:\pestpcbsrv\HPCHEM1\FID\_E\methods\Aliphatic EPH 042724.M  
 Quant Title : GC Extractables  
 QLast Update : Mon Apr 29 03:29:12 2024  
 Response via : Initial Calibration  
 Integrator: ChemStation

Volume Inj. : 1 ul  
 Signal Phase : Rxi-1ms  
 Signal Info : 20M x 0.18mm x 0.18um

Compound	R.T.	Response	Conc Units
-----			
System Monitoring Compounds			
9) S ortho-Terphenyl (SURR)	11.960	5575289	38.646 ug/ml
Spiked Amount	50.000	Recovery	= 77.29%
12) S 1-chlorooctadecane (S...	13.394	4446305	39.791 ug/ml
Spiked Amount	50.000	Recovery	= 79.58%

Target Compounds

-----

(f)=RT Delta > 1/2 Window

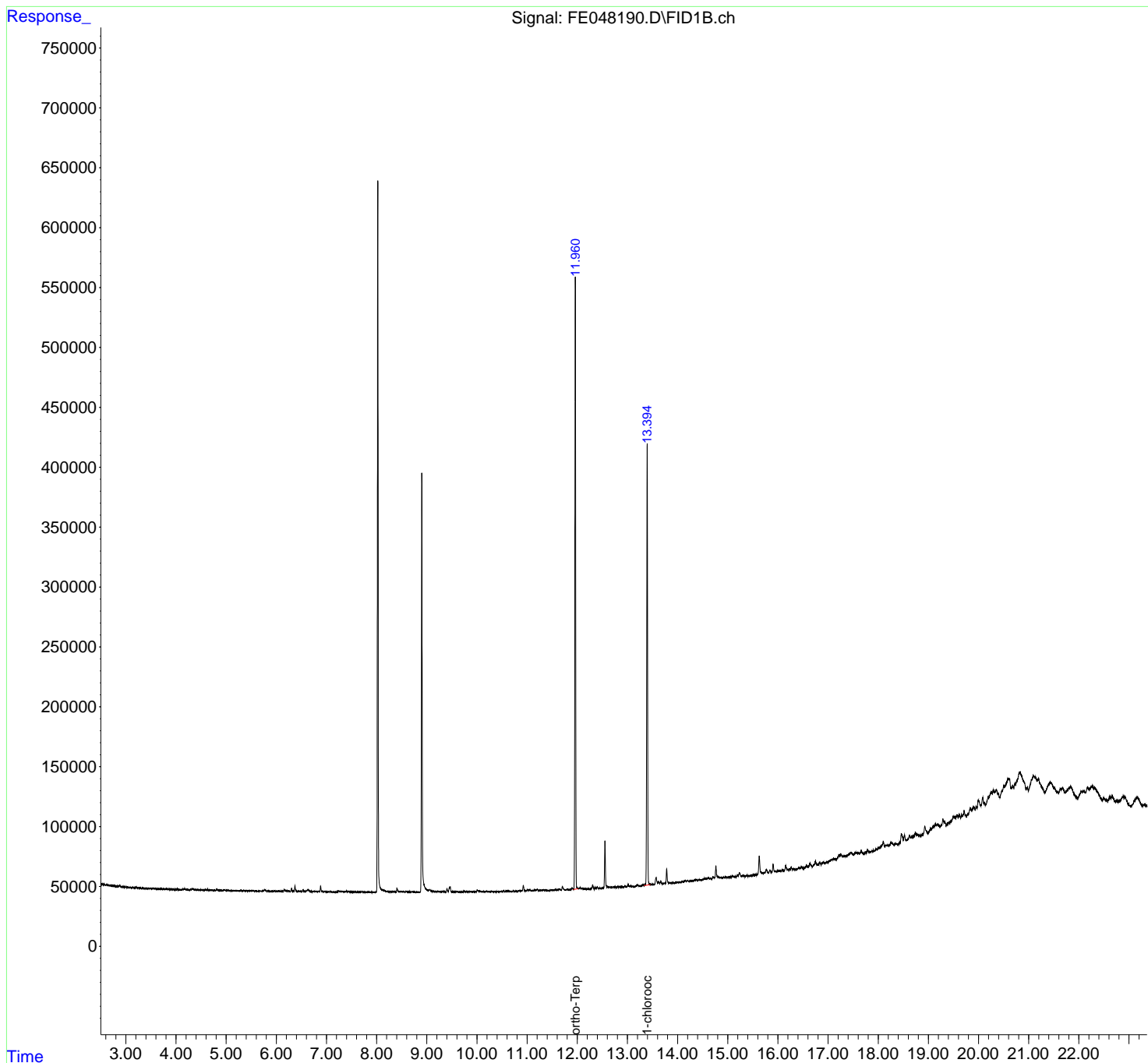
(m)=manual int.

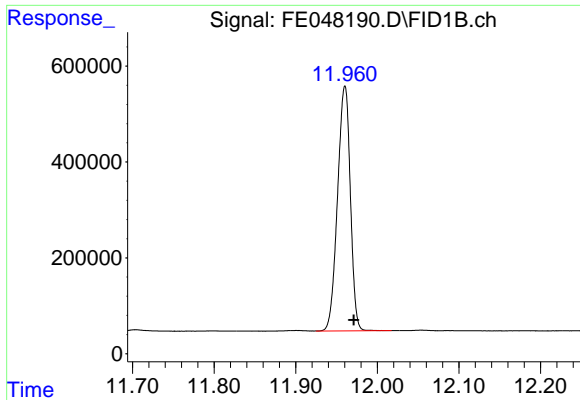
Data Path : Z:\pestpcbsrv\HPCHEM1\FID\_E\Data\FE051524AL\  
 Data File : FE048190.D  
 Signal(s) : FID1B.ch  
 Acq On : 15 May 2024 16:44  
 Operator : YP\AJ  
 Sample : P2476-01  
 Misc :  
 ALS Vial : 11 Sample Multiplier: 1

Instrument :  
 FID\_E  
 ClientSampleId :  
 WC-1-COMP

Integration File: autoint1.e  
 Quant Time: May 16 03:14:56 2024  
 Quant Method : Z:\pestpcbsrv\HPCHEM1\FID\_E\methods\Aliphatic EPH 042724.M  
 Quant Title : GC Extractables  
 QLast Update : Mon Apr 29 03:29:12 2024  
 Response via : Initial Calibration  
 Integrator: ChemStation

Volume Inj. : 1 ul  
 Signal Phase : Rxi-1ms  
 Signal Info : 20M x 0.18mm x 0.18um

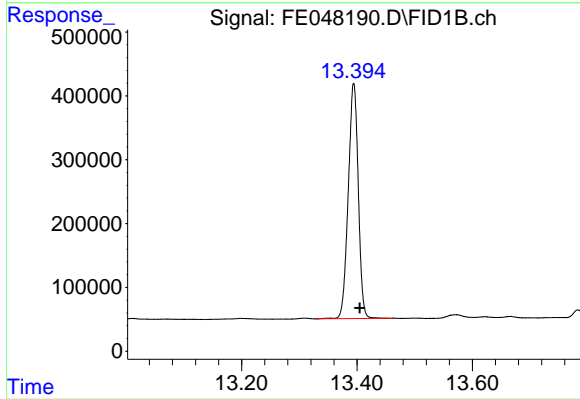




#9 ortho-Terphenyl (SURR)

R.T.: 11.960 min  
Delta R.T.: -0.011 min  
Response: 5575289  
Conc: 38.65 ug/ml

Instrument :  
FID\_E  
ClientSampleId :  
WC-1-COMP



#12 1-chlorooctadecane (SURR)

R.T.: 13.394 min  
Delta R.T.: -0.011 min  
Response: 4446305  
Conc: 39.79 ug/ml