

Data Path : Z:\pestpcbsrv\HPCHEM1\FID_E\Data\FE051625AL\
Data File : FE053888.D
Signal(s) : FID1B.ch
Acq On : 16 May 2025 22:11
Operator : YP\AJ
Sample : I.BLK
Misc :
ALS Vial : 1 Sample Multiplier: 1

Instrument :
FID_E
ClientSampleId :
I.BLK

Integration File: autoint1.e
Quant Time: May 17 05:12:45 2025
Quant Method : Z:\pestpcbsrv\HPCHEM1\FID_E\methods\Aliphatic EPH 051425.M
Quant Title : GC Extractables
QLast Update : Wed May 14 12:15:41 2025
Response via : Initial Calibration
Integrator: ChemStation

Volume Inj. : 1 ul
Signal Phase : Rxi-1ms
Signal Info : 20M x 0.18mm x 0.18um

Compound	R.T.	Response	Conc Units
----------	------	----------	------------

System Monitoring Compounds

Target Compounds

(f)=RT Delta > 1/2 Window

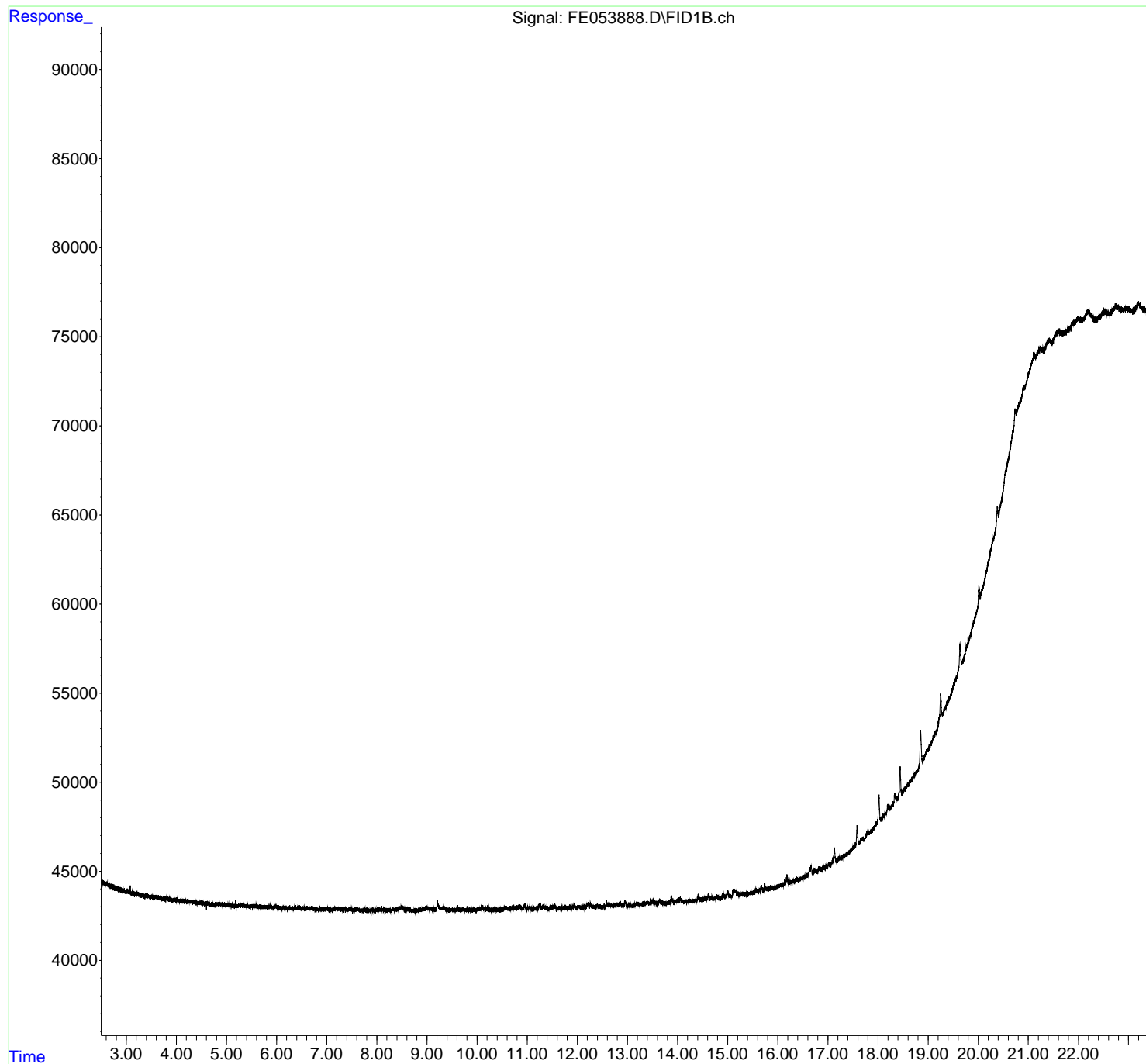
(m)=manual int.

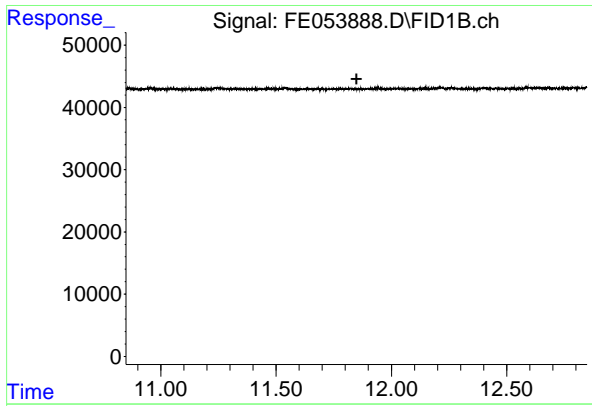
Data Path : Z:\pestpcbsrv\HPCHEM1\FID_E\Data\FE051625AL\
Data File : FE053888.D
Signal(s) : FID1B.ch
Acq On : 16 May 2025 22:11
Operator : YP\AJ
Sample : I.BLK
Misc :
ALS Vial : 1 Sample Multiplier: 1

Instrument :
FID_E
ClientSampleId :
I.BLK

Integration File: autoint1.e
Quant Time: May 17 05:12:45 2025
Quant Method : Z:\pestpcbsrv\HPCHEM1\FID_E\methods\Aliphatic EPH 051425.M
Quant Title : GC Extractables
QLast Update : Wed May 14 12:15:41 2025
Response via : Initial Calibration
Integrator: ChemStation

Volume Inj. : 1 ul
Signal Phase : Rxi-1ms
Signal Info : 20M x 0.18mm x 0.18um

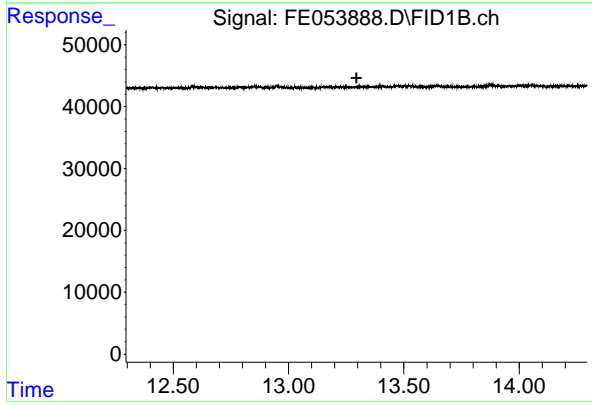




#9 ortho-Terphenyl (SURR)

R.T.: 0.000 min
Exp R.T. : 11.849 min
Response: 0
Conc: N.D.

Instrument :
FID_E
ClientSampleId :
I.BLK



#12 1-chlorooctadecane (SURR)

R.T.: 0.000 min
Exp R.T. : 13.295 min
Response: 0
Conc: N.D.