

Data Path : Z:\pestpcbsrv\HPCHEM1\FID_E\Data\FE051723AL\
 Data File : FE041961.D
 Signal(s) : FID1B.ch
 Acq On : 17 May 2023 19:15
 Operator : YP\AJ
 Sample : 02811-01
 Misc :
 ALS Vial : 18 Sample Multiplier: 1

Instrument :
 FID_E
ClientSampleId :
 72-11995

Manual Integrations
APPROVED

Reviewed By :Yogesh Patel 05/18/2023
 Supervised By :Ankita Jodhani 05/18/2023

Integration File: autoint1.e
 Quant Time: May 18 01:21:34 2023
 Quant Method : Z:\pestpcbsrv\HPCHEM1\FID_E\methods\Aliphatic EPH 042123.M
 Quant Title : GC Extractables
 QLast Update : Fri Apr 21 07:33:51 2023
 Response via : Initial Calibration
 Integrator: ChemStation

Volume Inj. : 1 ul
 Signal Phase : Rxi-1ms
 Signal Info : 20M x 0.18mm x 0.18um

Compound	R.T.	Response	Conc Units

System Monitoring Compounds			
9) S ortho-Terphenyl (SURR)	11.992	7341561	39.132 ug/mlm
Spiked Amount	50.000	Recovery =	78.26%
12) S 1-chlorooctadecane (S...	13.428	5002032	35.408 ug/mlm
Spiked Amount	50.000	Recovery =	70.82%

Target Compounds

(f)=RT Delta > 1/2 Window

(m)=manual int.

Data Path : Z:\pestpcbsrv\HPCHEM1\FID_E\Data\FE051723AL\
 Data File : FE041961.D
 Signal(s) : FID1B.ch
 Acq On : 17 May 2023 19:15
 Operator : YP\AJ
 Sample : 02811-01
 Misc :
 ALS Vial : 18 Sample Multiplier: 1

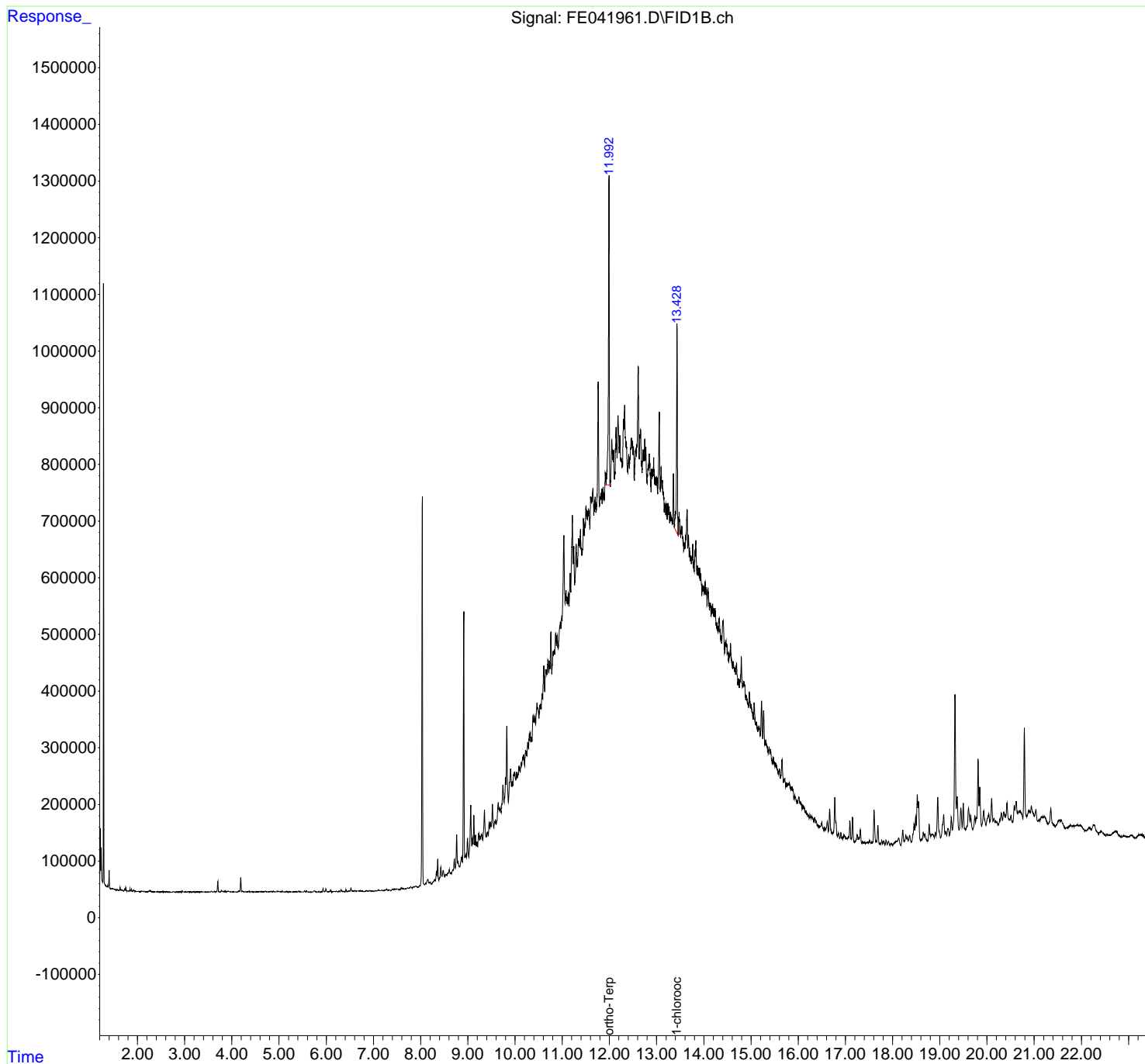
Instrument :
 FID_E
 ClientSampleId :
 72-11995

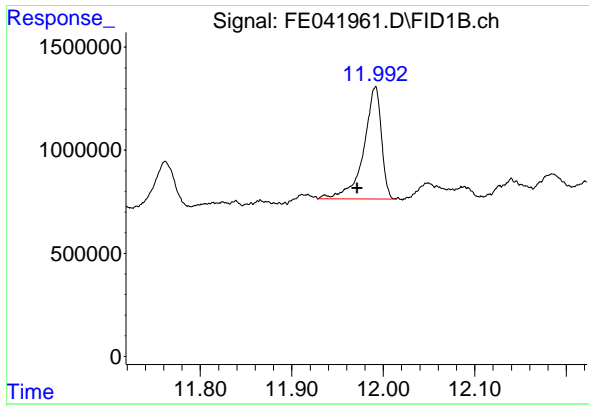
Manual Integrations
APPROVED

Reviewed By :Yogesh Patel 05/18/2023
 Supervised By :Ankita Jodhani 05/18/2023

Integration File: autoint1.e
 Quant Time: May 18 01:21:34 2023
 Quant Method : Z:\pestpcbsrv\HPCHEM1\FID_E\methods\Aliphatic EPH 042123.
 Quant Title : GC Extractables
 QLast Update : Fri Apr 21 07:33:51 2023
 Response via : Initial Calibration
 Integrator: ChemStation

Volume Inj. : 1 ul
 Signal Phase : Rxi-1ms
 Signal Info : 20M x 0.18mm x 0.18um





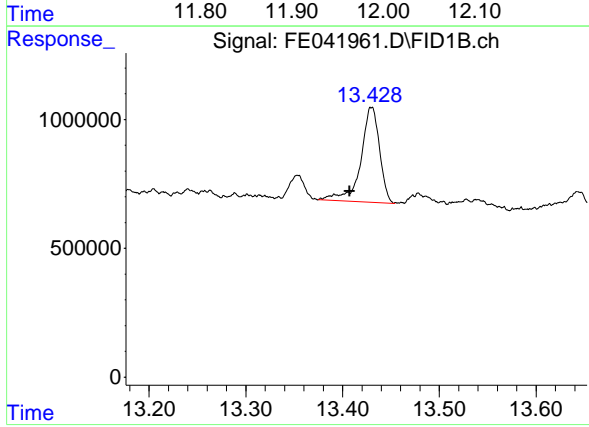
#9 ortho-Terphenyl (SURRE)

R.T.: 11.992 min
 Delta R.T.: 0.020 min
 Response: 7341561
 Conc: 39.13 ug/ml

Instrument : FID_E
 Client Sample Id : 72-11995

Manual Integrations
 APPROVED

Reviewed By :Yogesh Patel 05/18/2023
 Supervised By :Ankita Jodhani 05/18/2023



#12 1-chlorooctadecane (SURRE)

R.T.: 13.428 min
 Delta R.T.: 0.021 min
 Response: 5002032
 Conc: 35.41 ug/ml m