

Data Path : Z:\pestpcbsrv\HPCHEM1\FID\_E\Data\FE052023AL\  
 Data File : FE042055.D  
 Signal(s) : FID1B.ch  
 Acq On : 20 May 2023 11:08  
 Operator : YP\AJ  
 Sample : 20 PPM ALIPHATIC HC STD  
 Misc :  
 ALS Vial : 2 Sample Multiplier: 1

Instrument :  
 FID\_E  
 ClientSampleId :  
 20 PPM ALIPHATIC HC STD

Integration File: autoint1.e  
 Quant Time: May 20 11:42:03 2023  
 Quant Method : Z:\pestpcbsrv\HPCHEM1\FID\_E\methods\Aliphatic EPH 051823.M  
 Quant Title : GC Extractables  
 QLast Update : Thu May 18 06:27:12 2023  
 Response via : Initial Calibration  
 Integrator: ChemStation

Volume Inj. : 1 ul  
 Signal Phase : Rxi-1ms  
 Signal Info : 20M x 0.18mm x 0.18um

Compound	R.T.	Response	Conc Units
-----			
System Monitoring Compounds			
9) S ortho-Terphenyl (SURR)	11.965	3929442	22.253 ug/ml
Spiked Amount	50.000	Recovery	= 44.51%
12) S 1-chlorooctadecane (S...	13.400	2938696	22.116 ug/ml
Spiked Amount	50.000	Recovery	= 44.23%
Target Compounds			
1) T n-Nonane (C9)	3.345	3077613	21.343 ug/ml
2) T n-Decane (C10)	4.597	3138599	21.202 ug/ml
3) T A~Naphthalene (C11.7)	6.304	3485296	21.361 ug/ml
4) T n-Dodecane (C12)	6.765	3189499	21.270 ug/ml
5) T A~2-methylnaphthalene...	7.401	3384472	21.326 ug/ml
6) T n-Tetradecane (C14)	8.594	3197111	21.342 ug/ml
7) T n-Hexadecane (C16)	10.203	3356034	21.545 ug/ml
8) T n-Octadecane (C18)	11.646	3436096	21.729 ug/ml
10) T n-Eicosane (C20)	12.955	3341545	22.044 ug/ml
11) T n-Heneicosane (C21)	13.568	3304660	22.306 ug/ml
13) T n-Docosane (C22)	14.154	3289708	22.440 ug/ml
14) T n-Tetracosane (C24)	15.258	3265786	22.623 ug/ml
15) T n-Hexacosane (C26)	16.279	3179606	22.958 ug/ml
16) T n-Octacosane (C28)	17.229	3060452	22.859 ug/ml
17) T n-Tricontane (C30)	18.115	3060112	22.669 ug/ml
18) T n-Dotriacontane (C32)	18.948	2945517	22.049 ug/ml
19) T n-Tetratriacontane (C34)	19.731	2777302	21.118 ug/ml
20) T n-Hexatriacontane (C36)	20.471	2640444	20.315 ug/ml
21) T n-Octatriacontane (C38)	21.220	2564558	18.903 ug/ml
22) T n-Tetracontane (C40)	22.155	2566639	18.449 ug/ml

(f)=RT Delta > 1/2 Window

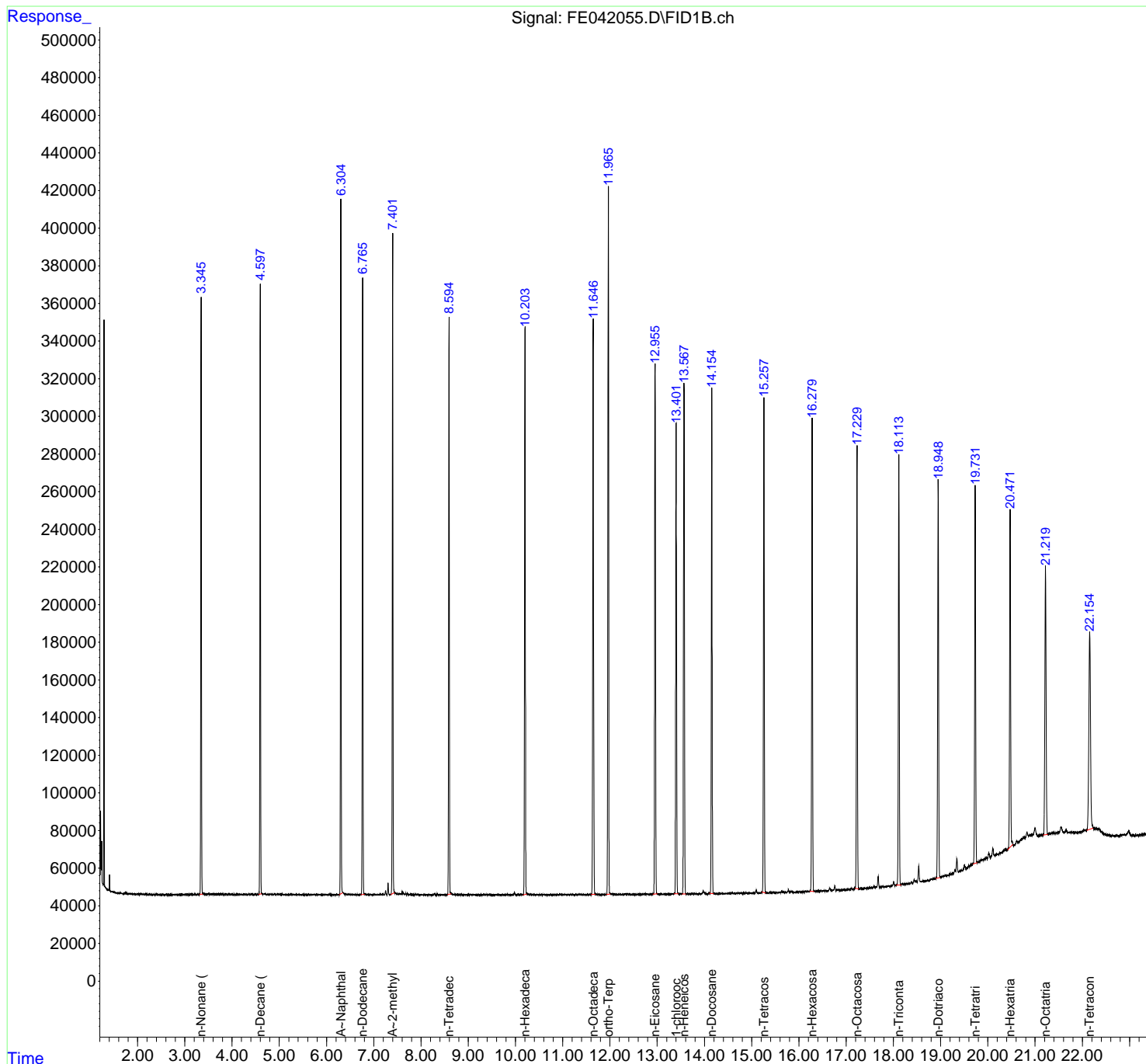
(m)=manual int.

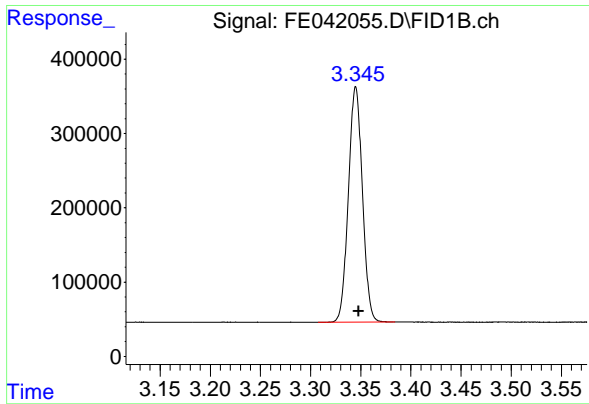
Data Path : Z:\pestpcbsrv\HPCHEM1\FID\_E\Data\FE052023AL\  
Data File : FE042055.D  
Signal(s) : FID1B.ch  
Acq On : 20 May 2023 11:08  
Operator : YP\AJ  
Sample : 20 PPM ALIPHATIC HC STD  
Misc :  
ALS Vial : 2 Sample Multiplier: 1

Instrument :  
FID\_E  
ClientSampleId :  
20 PPM ALIPHATIC HC STD

Integration File: autoint1.e  
Quant Time: May 20 11:42:03 2023  
Quant Method : Z:\pestpcbsrv\HPCHEM1\FID\_E\methods\Aliphatic EPH 051823.M  
Quant Title : GC Extractables  
QLast Update : Thu May 18 06:27:12 2023  
Response via : Initial Calibration  
Integrator: ChemStation

Volume Inj. : 1 ul  
Signal Phase : Rxi-1ms  
Signal Info : 20M x 0.18mm x 0.18um

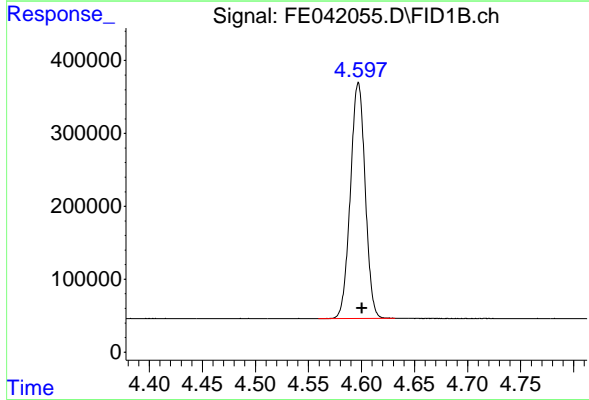




#1 n-Nonane (C9)

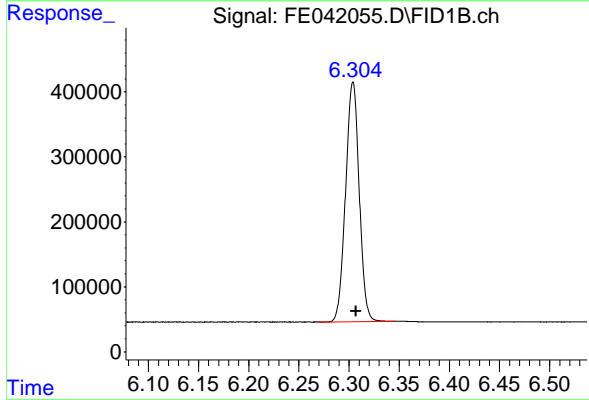
R.T.: 3.345 min  
Delta R.T.: -0.003 min  
Response: 3077613  
Conc: 21.34 ug/ml

Instrument :  
FID\_E  
ClientSampleId :  
20 PPM ALIPHATIC HC STD



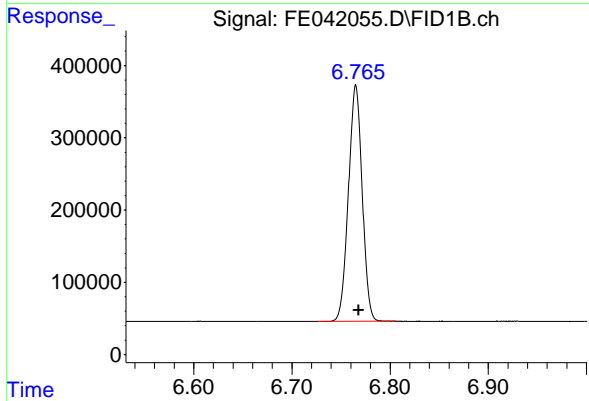
#2 n-Decane (C10)

R.T.: 4.597 min  
Delta R.T.: -0.003 min  
Response: 3138599  
Conc: 21.20 ug/ml



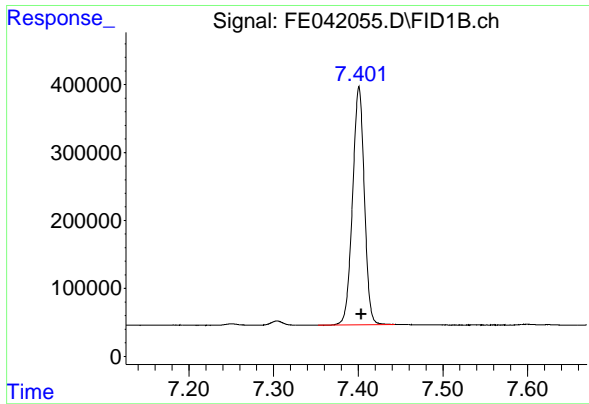
#3 A~Naphthalene (C11.7)

R.T.: 6.304 min  
Delta R.T.: -0.003 min  
Response: 3485296  
Conc: 21.36 ug/ml



#4 n-Dodecane (C12)

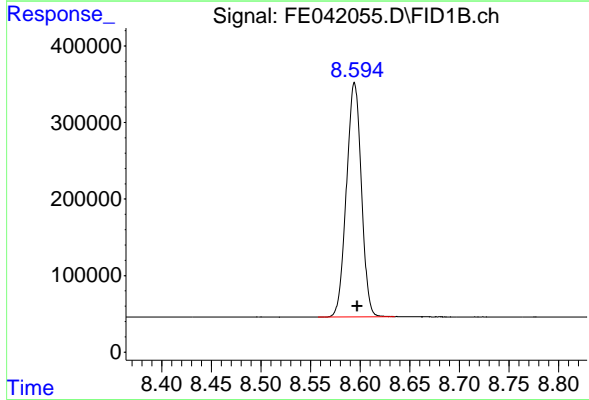
R.T.: 6.765 min  
Delta R.T.: -0.003 min  
Response: 3189499  
Conc: 21.27 ug/ml



#5 A~2-methylnaphthalene (C12.89)

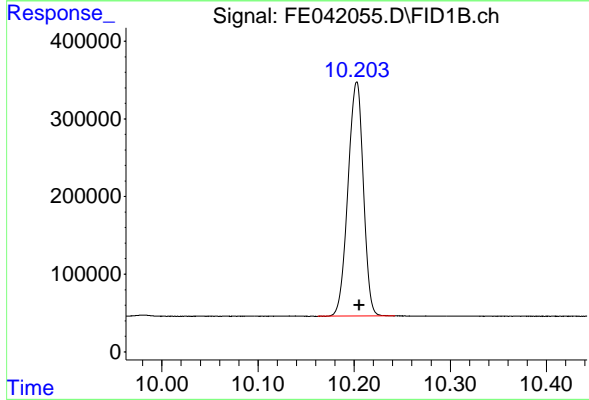
R.T.: 7.401 min  
 Delta R.T.: -0.003 min  
 Response: 3384472  
 Conc: 21.33 ug/ml

Instrument : FID\_E  
 ClientSampleId : 20 PPM ALIPHATIC HC STD



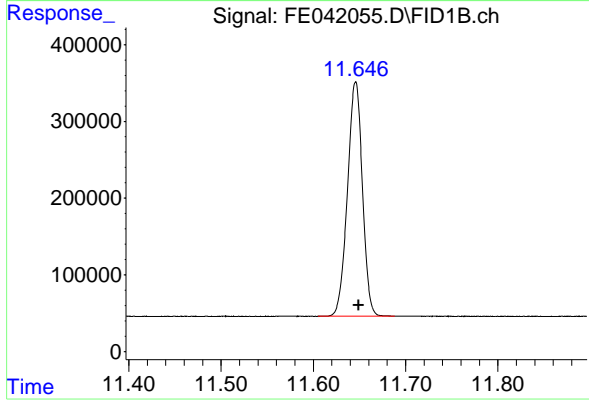
#6 n-Tetradecane (C14)

R.T.: 8.594 min  
 Delta R.T.: -0.003 min  
 Response: 3197111  
 Conc: 21.34 ug/ml



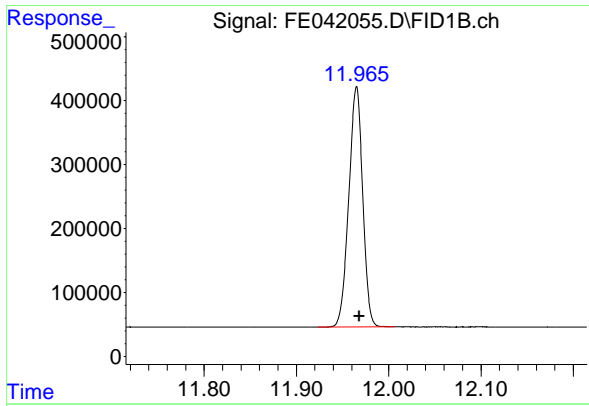
#7 n-Hexadecane (C16)

R.T.: 10.203 min  
 Delta R.T.: -0.003 min  
 Response: 3356034  
 Conc: 21.54 ug/ml



#8 n-Octadecane (C18)

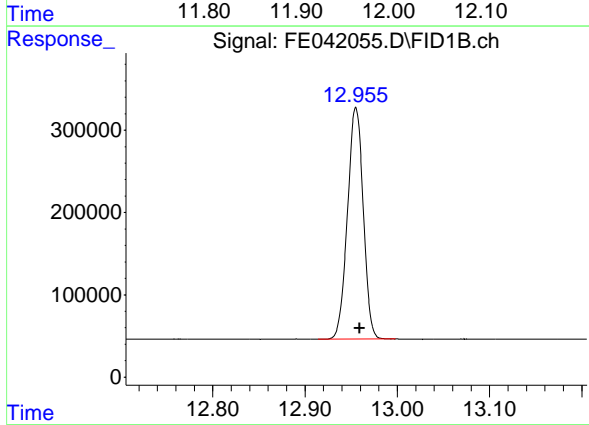
R.T.: 11.646 min  
 Delta R.T.: -0.003 min  
 Response: 3436096  
 Conc: 21.73 ug/ml



#9 ortho-Terphenyl (SURR)

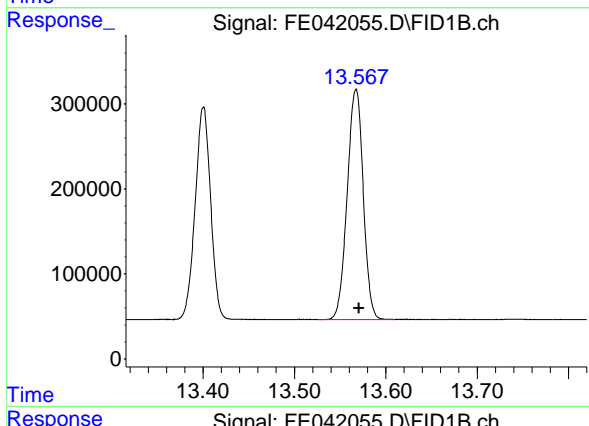
R.T.: 11.965 min  
 Delta R.T.: -0.003 min  
 Response: 3929442  
 Conc: 22.25 ug/ml

Instrument : FID\_E  
 ClientSampleId : 20 PPM ALIPHATIC HC STD



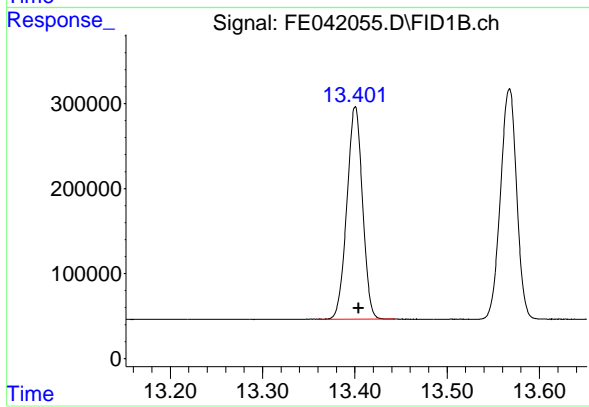
#10 n-Eicosane (C20)

R.T.: 12.955 min  
 Delta R.T.: -0.004 min  
 Response: 3341545  
 Conc: 22.04 ug/ml



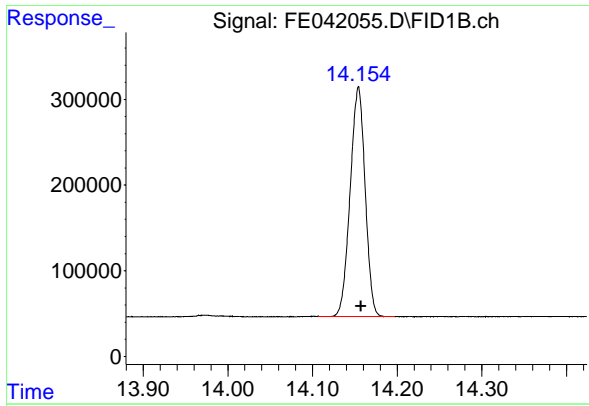
#11 n-Heneicosane (C21)

R.T.: 13.568 min  
 Delta R.T.: -0.003 min  
 Response: 3304660  
 Conc: 22.31 ug/ml



#12 1-chlorooctadecane (SURR)

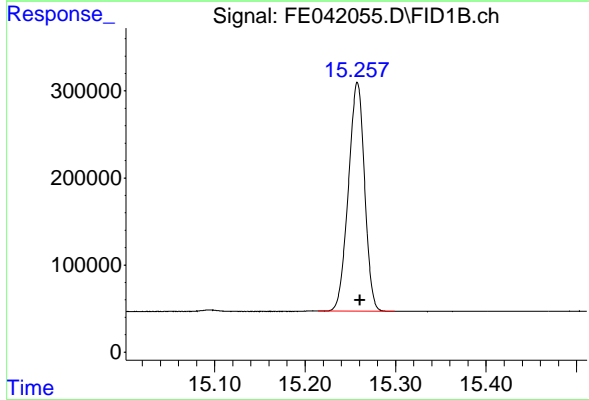
R.T.: 13.400 min  
 Delta R.T.: -0.004 min  
 Response: 2938696  
 Conc: 22.12 ug/ml



#13 n-Docosane (C22)

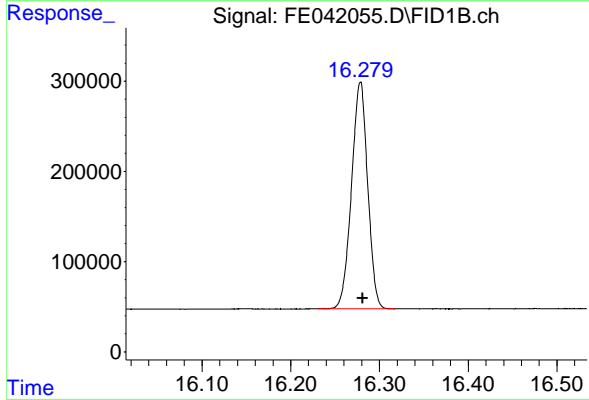
R.T.: 14.154 min  
 Delta R.T.: -0.003 min  
 Response: 3289708  
 Conc: 22.44 ug/ml

Instrument : FID\_E  
 ClientSampleId : 20 PPM ALIPHATIC HC STD



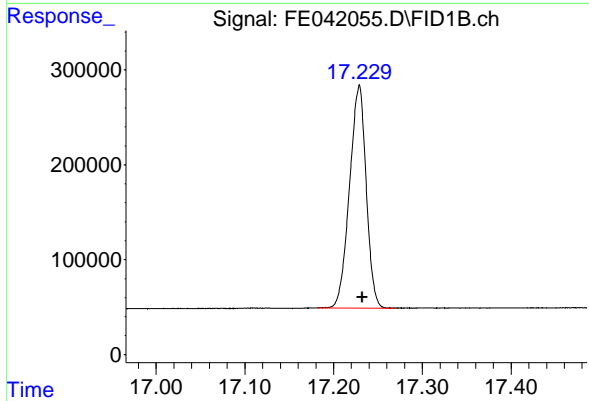
#14 n-Tetracosane (C24)

R.T.: 15.258 min  
 Delta R.T.: -0.003 min  
 Response: 3265786  
 Conc: 22.62 ug/ml



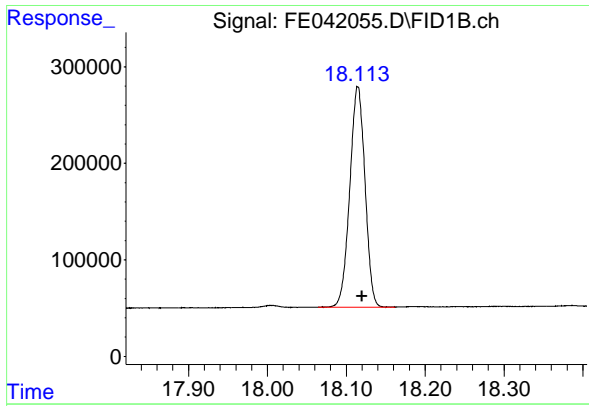
#15 n-Hexacosane (C26)

R.T.: 16.279 min  
 Delta R.T.: -0.002 min  
 Response: 3179606  
 Conc: 22.96 ug/ml



#16 n-Octacosane (C28)

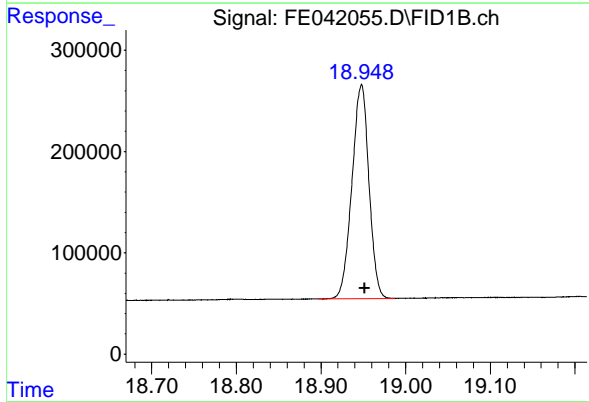
R.T.: 17.229 min  
 Delta R.T.: -0.003 min  
 Response: 3060452  
 Conc: 22.86 ug/ml



#17 n-Tricontane (C30)

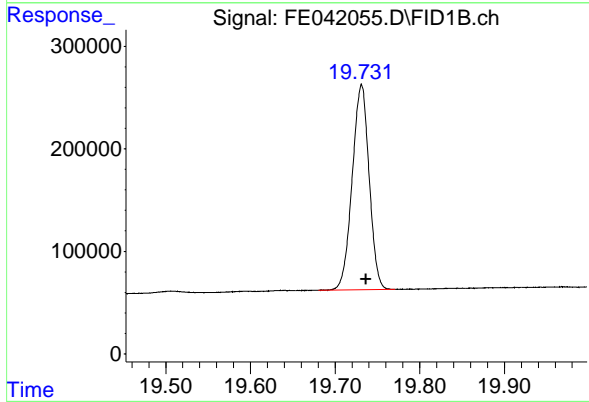
R.T.: 18.115 min  
Delta R.T.: -0.005 min  
Response: 3060112  
Conc: 22.67 ug/ml

Instrument : FID\_E  
ClientSampleId : 20 PPM ALIPHATIC HC STD



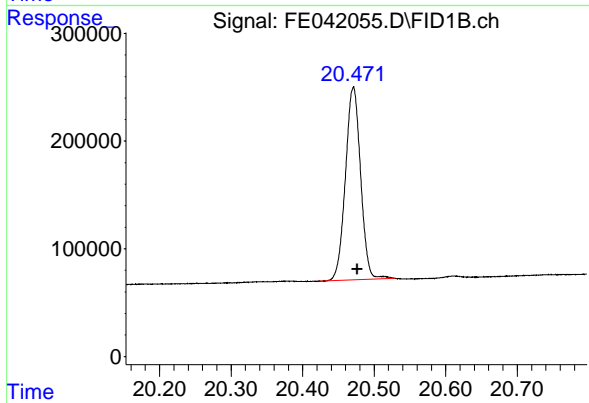
#18 n-Dotriacontane (C32)

R.T.: 18.948 min  
Delta R.T.: -0.004 min  
Response: 2945517  
Conc: 22.05 ug/ml



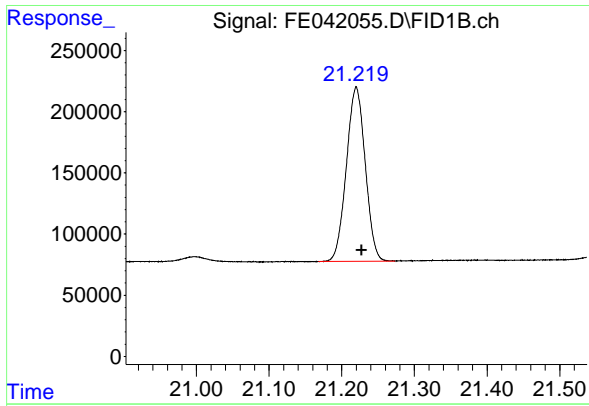
#19 n-Tetraatriacontane (C34)

R.T.: 19.731 min  
Delta R.T.: -0.005 min  
Response: 2777302  
Conc: 21.12 ug/ml



#20 n-Hexatriacontane (C36)

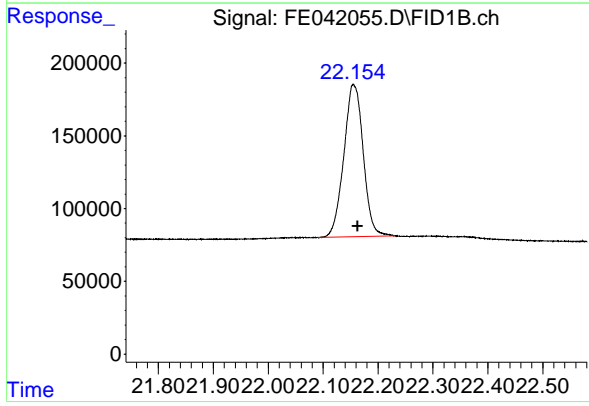
R.T.: 20.471 min  
Delta R.T.: -0.006 min  
Response: 2640444  
Conc: 20.32 ug/ml



#21 n-Octatriacontane (C38)

R.T.: 21.220 min  
Delta R.T.: -0.007 min  
Response: 2564558  
Conc: 18.90 ug/ml

Instrument :  
FID\_E  
ClientSampleId :  
20 PPM ALIPHATIC HC STD



#22 n-Tetracontane (C40)

R.T.: 22.155 min  
Delta R.T.: -0.008 min  
Response: 2566639  
Conc: 18.45 ug/ml