

Data Path : Z:\pestpcbsrv\HPCHEM1\FID_E\Data\FE052123AL\
 Data File : FE042075.D
 Signal(s) : FID1B.ch
 Acq On : 20 May 2023 22:51
 Operator : YP\AJ
 Sample : 02849-30
 Misc :
 ALS Vial : 25 Sample Multiplier: 1

Instrument :
 FID_E
 ClientSampleId :

Integration File: autoint1.e
 Quant Time: May 21 04:23:41 2023
 Quant Method : Z:\pestpcbsrv\HPCHEM1\FID_E\methods\Aliphatic EPH 051823.M
 Quant Title : GC Extractables
 QLast Update : Thu May 18 06:27:12 2023
 Response via : Initial Calibration
 Integrator: ChemStation

Volume Inj. : 1 ul
 Signal Phase : Rxi-1ms
 Signal Info : 20M x 0.18mm x 0.18um

Compound	R.T.	Response	Conc Units

System Monitoring Compounds			
9) S ortho-Terphenyl (SURR)	11.965	7146545	40.472 ug/ml
Spiked Amount	50.000	Recovery	= 80.94%
12) S 1-chlorooctadecane (S...	13.400	5598319	42.131 ug/ml
Spiked Amount	50.000	Recovery	= 84.26%
Target Compounds			
2) T n-Decane (C10)	4.612	181287	1.225 ug/ml
5) T A~2-methylnaphthalene...	7.335f	304998	1.922 ug/ml
18) T n-Dotriacontane (C32)	18.930	446113	3.339 ug/ml
19) T n-Tetratriacontane (C34)	19.792f	460283	3.500 ug/ml

(f)=RT Delta > 1/2 Window

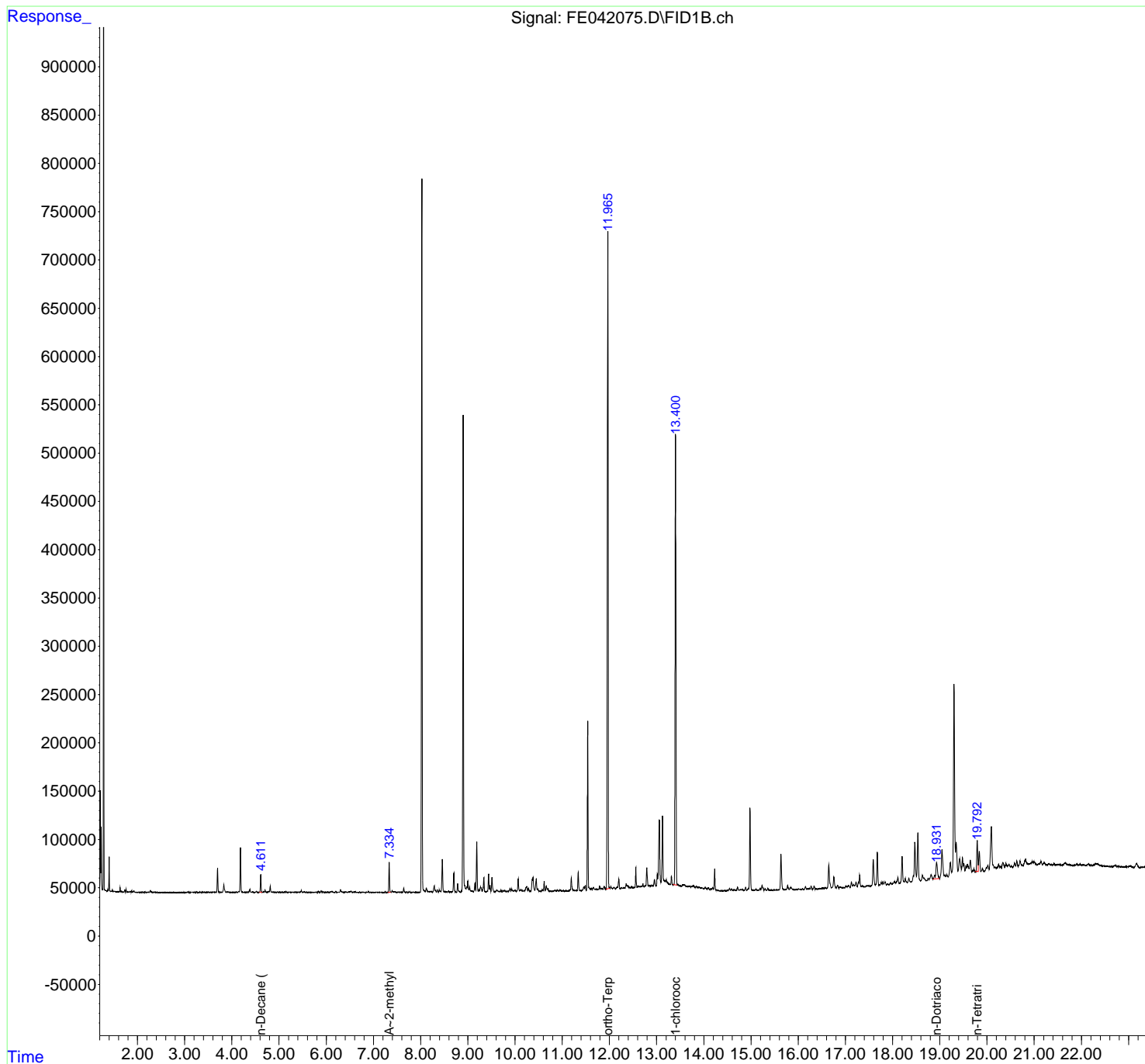
(m)=manual int.

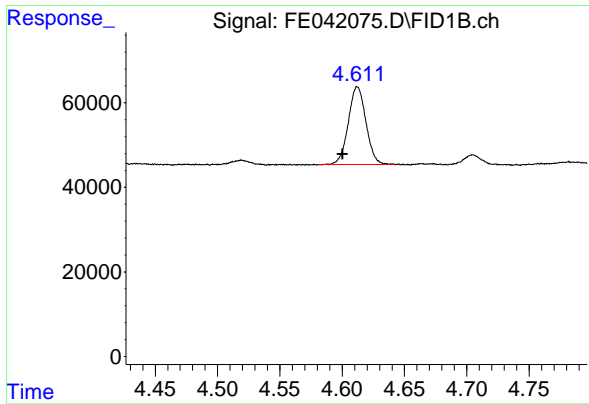
Data Path : Z:\pestpcbsrv\HPCHEM1\FID_E\Data\FE052123AL\
 Data File : FE042075.D
 Signal(s) : FID1B.ch
 Acq On : 20 May 2023 22:51
 Operator : YP\AJ
 Sample : 02849-30
 Misc :
 ALS Vial : 25 Sample Multiplier: 1

Instrument :
 FID_E
 ClientSampleId :

Integration File: autoint1.e
 Quant Time: May 21 04:23:41 2023
 Quant Method : Z:\pestpcbsrv\HPCHEM1\FID_E\methods\Aliphatic EPH 051823.M
 Quant Title : GC Extractables
 QLast Update : Thu May 18 06:27:12 2023
 Response via : Initial Calibration
 Integrator: ChemStation

Volume Inj. : 1 ul
 Signal Phase : Rxi-1ms
 Signal Info : 20M x 0.18mm x 0.18um

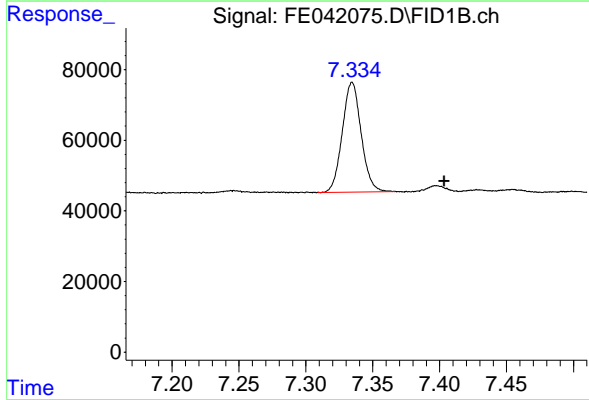




#2 n-Decane (C10)

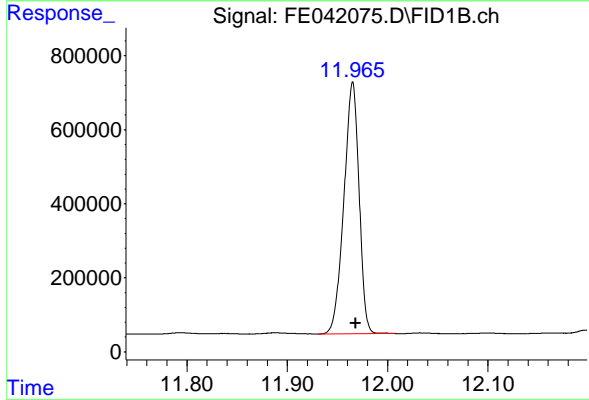
R.T.: 4.612 min
 Delta R.T.: 0.012 min
 Response: 181287
 Conc: 1.22 ug/ml

Instrument :
 FID_E
 ClientSampleId :



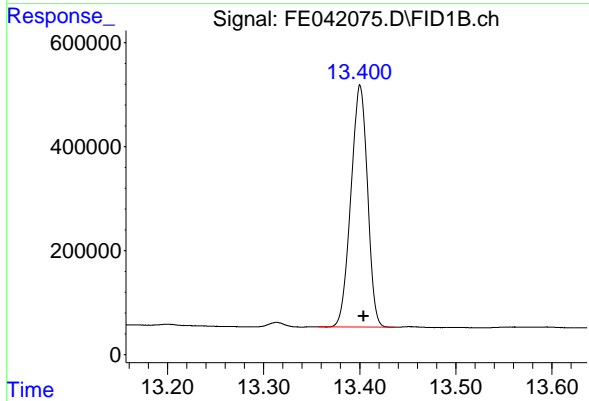
#5 A~2-methylnaphthalene (C12.89)

R.T.: 7.335 min
 Delta R.T.: -0.069 min
 Response: 304998
 Conc: 1.92 ug/ml



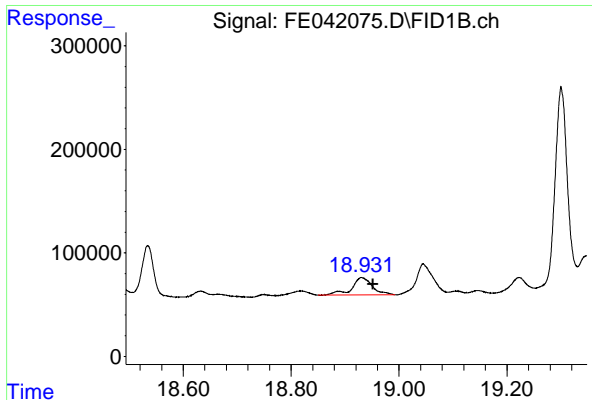
#9 ortho-Terphenyl (SURR)

R.T.: 11.965 min
 Delta R.T.: -0.003 min
 Response: 7146545
 Conc: 40.47 ug/ml



#12 1-chlorooctadecane (SURR)

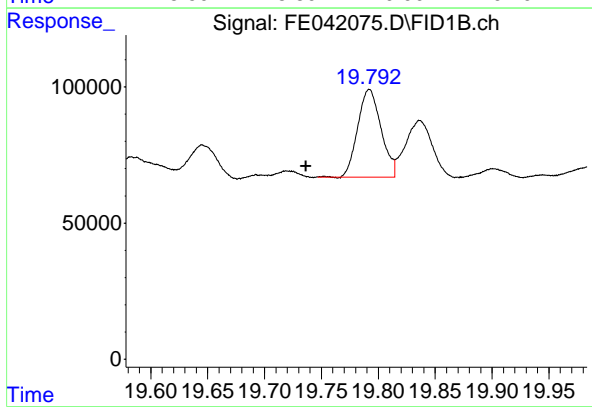
R.T.: 13.400 min
 Delta R.T.: -0.004 min
 Response: 5598319
 Conc: 42.13 ug/ml



#18 n-Dotriacontane (C32)

R.T.: 18.930 min
Delta R.T.: -0.021 min
Response: 446113
Conc: 3.34 ug/ml

Instrument :
FID_E
ClientSampleId :



#19 n-Tetratriacontane (C34)

R.T.: 19.792 min
Delta R.T.: 0.056 min
Response: 460283
Conc: 3.50 ug/ml