

Data Path : Z:\pestpcbsrv\HPCHEM1\FID_E\Data\FE052223AL\
 Data File : FE042120.D
 Signal(s) : FID1B.ch
 Acq On : 22 May 2023 23:56
 Operator : YP\AJ
 Sample : 20 PPM ALIPHATIC HC STD
 Misc :
 ALS Vial : 2 Sample Multiplier: 1

Instrument :
 FID_E
 ClientSampleId :

Integration File: autoint1.e
 Quant Time: May 23 01:11:57 2023
 Quant Method : Z:\pestpcbsrv\HPCHEM1\FID_E\methods\Aliphatic EPH 051823.M
 Quant Title : GC Extractables
 QLast Update : Thu May 18 06:27:12 2023
 Response via : Initial Calibration
 Integrator: ChemStation

Volume Inj. : 1 ul
 Signal Phase : Rxi-1ms
 Signal Info : 20M x 0.18mm x 0.18um

| Compound | R.T. | Response | Conc Units |
|--------------------------------|--------|------------|--------------|
| ----- | | | |
| System Monitoring Compounds | | | |
| 9) S ortho-Terphenyl (SURR) | 11.959 | 3714470 | 21.036 ug/ml |
| Spiked Amount | 50.000 | Recovery = | 42.07% |
| 12) S 1-chlorooctadecane (S... | 13.394 | 2773375 | 20.871 ug/ml |
| Spiked Amount | 50.000 | Recovery = | 41.74% |
| Target Compounds | | | |
| 1) T n-Nonane (C9) | 3.342 | 2931023 | 20.326 ug/ml |
| 2) T n-Decane (C10) | 4.593 | 2993838 | 20.224 ug/ml |
| 3) T A~Naphthalene (C11.7) | 6.298 | 3314064 | 20.312 ug/ml |
| 4) T n-Dodecane (C12) | 6.760 | 3046806 | 20.318 ug/ml |
| 5) T A~2-methylnaphthalene... | 7.395 | 3216082 | 20.265 ug/ml |
| 6) T n-Tetradecane (C14) | 8.589 | 3052074 | 20.373 ug/ml |
| 7) T n-Hexadecane (C16) | 10.196 | 3209910 | 20.607 ug/ml |
| 8) T n-Octadecane (C18) | 11.639 | 3285412 | 20.776 ug/ml |
| 10) T n-Eicosane (C20) | 12.948 | 3176939 | 20.958 ug/ml |
| 11) T n-Heneicosane (C21) | 13.560 | 3122936 | 21.079 ug/ml |
| 13) T n-Docosane (C22) | 14.146 | 3093200 | 21.100 ug/ml |
| 14) T n-Tetracosane (C24) | 15.249 | 3043492 | 21.083 ug/ml |
| 15) T n-Hexacosane (C26) | 16.269 | 2936124 | 21.200 ug/ml |
| 16) T n-Octacosane (C28) | 17.219 | 2821341 | 21.073 ug/ml |
| 17) T n-Tricontane (C30) | 18.106 | 2842738 | 21.059 ug/ml |
| 18) T n-Dotriacontane (C32) | 18.938 | 2754715 | 20.621 ug/ml |
| 19) T n-Tetratriacontane (C34) | 19.722 | 2593298 | 19.719 ug/ml |
| 20) T n-Hexatriacontane (C36) | 20.463 | 2422447 | 18.638 ug/ml |
| 21) T n-Octatriacontane (C38) | 21.208 | 2404220 | 17.721 ug/ml |
| 22) T n-Tetracontane (C40) | 22.141 | 2388466 | 17.169 ug/ml |

(f)=RT Delta > 1/2 Window

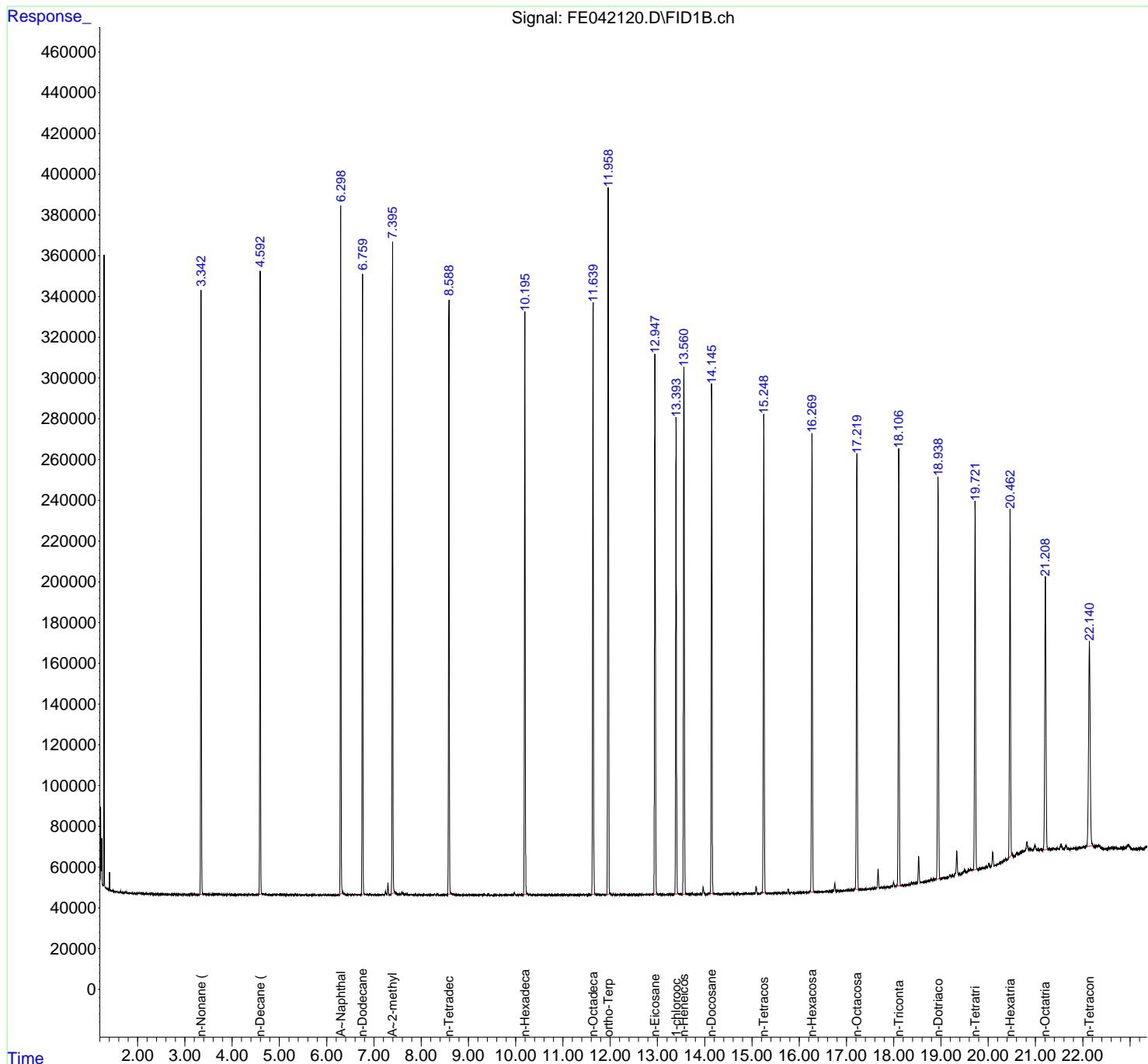
(m)=manual int.

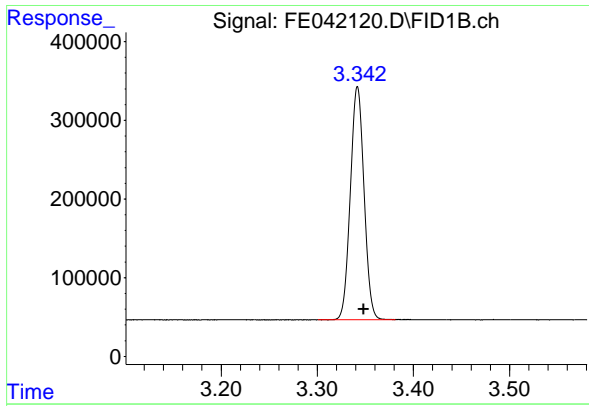
Data Path : Z:\pestpcbsrv\HPCHEM1\FID_E\Data\FE052223AL\
 Data File : FE042120.D
 Signal(s) : FID1B.ch
 Acq On : 22 May 2023 23:56
 Operator : YP\AJ
 Sample : 20 PPM ALIPHATIC HC STD
 Misc :
 ALS Vial : 2 Sample Multiplier: 1

Instrument :
 FID_E
 ClientSampleId :

Integration File: autoint1.e
 Quant Time: May 23 01:11:57 2023
 Quant Method : Z:\pestpcbsrv\HPCHEM1\FID_E\methods\Aliphatic EPH 051823.M
 Quant Title : GC Extractables
 QLast Update : Thu May 18 06:27:12 2023
 Response via : Initial Calibration
 Integrator: ChemStation

Volume Inj. : 1 ul
 Signal Phase : Rxi-1ms
 Signal Info : 20M x 0.18mm x 0.18um

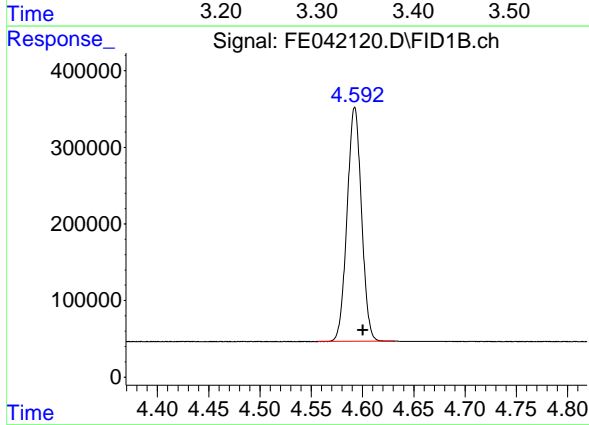




#1 n-Nonane (C9)

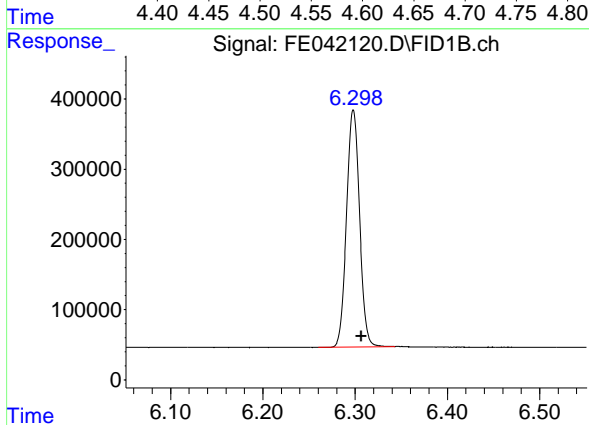
R.T.: 3.342 min
Delta R.T.: -0.006 min
Response: 2931023
Conc: 20.33 ug/ml

Instrument : FID_E
ClientSampleId :



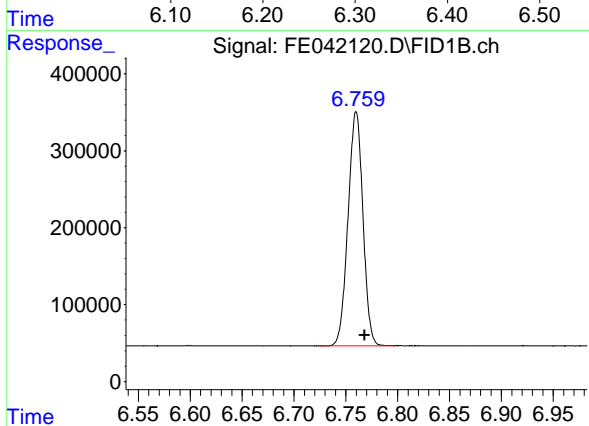
#2 n-Decane (C10)

R.T.: 4.593 min
Delta R.T.: -0.008 min
Response: 2993838
Conc: 20.22 ug/ml



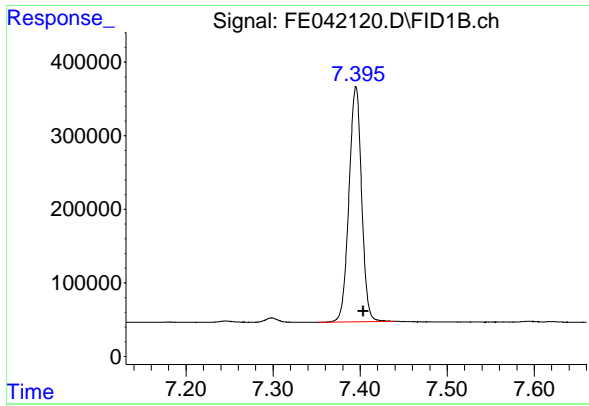
#3 A~Naphthalene (C11.7)

R.T.: 6.298 min
Delta R.T.: -0.009 min
Response: 3314064
Conc: 20.31 ug/ml



#4 n-Dodecane (C12)

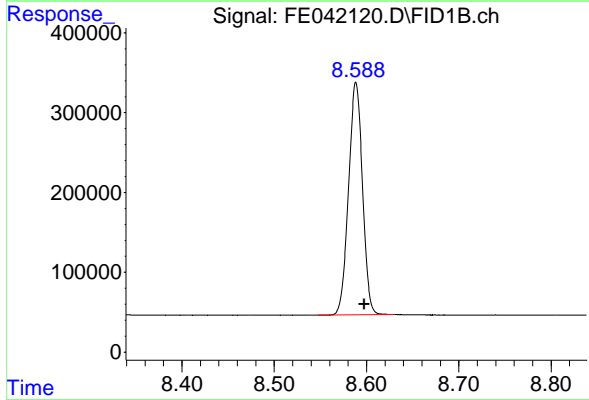
R.T.: 6.760 min
Delta R.T.: -0.008 min
Response: 3046806
Conc: 20.32 ug/ml



#5 A~2-methylnaphthalene (C12.89)

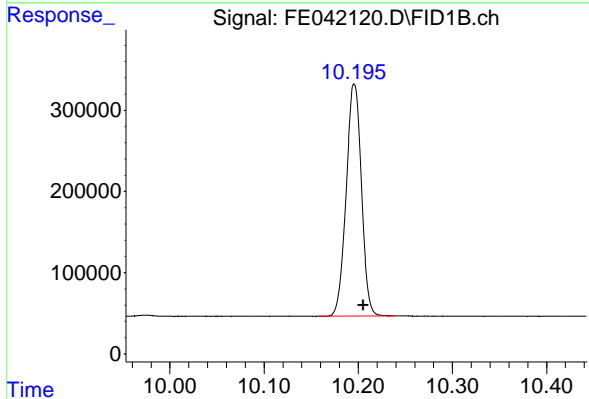
R.T.: 7.395 min
Delta R.T.: -0.008 min
Response: 3216082
Conc: 20.26 ug/ml

Instrument :
FID_E
ClientSampleId :



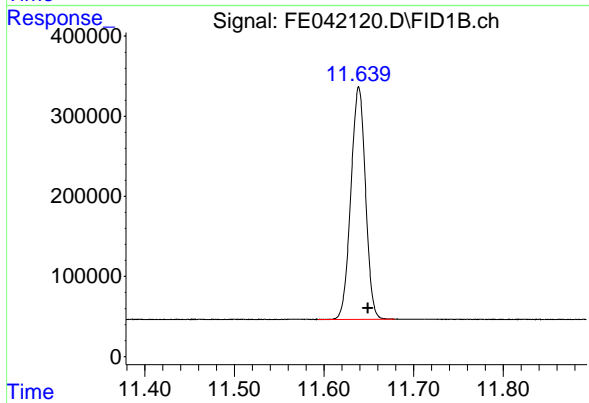
#6 n-Tetradecane (C14)

R.T.: 8.589 min
Delta R.T.: -0.009 min
Response: 3052074
Conc: 20.37 ug/ml



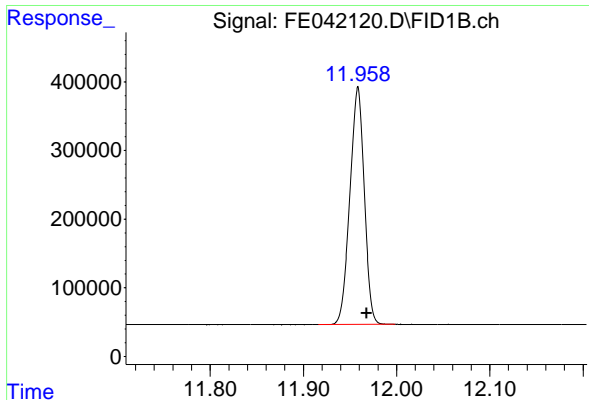
#7 n-Hexadecane (C16)

R.T.: 10.196 min
Delta R.T.: -0.009 min
Response: 3209910
Conc: 20.61 ug/ml



#8 n-Octadecane (C18)

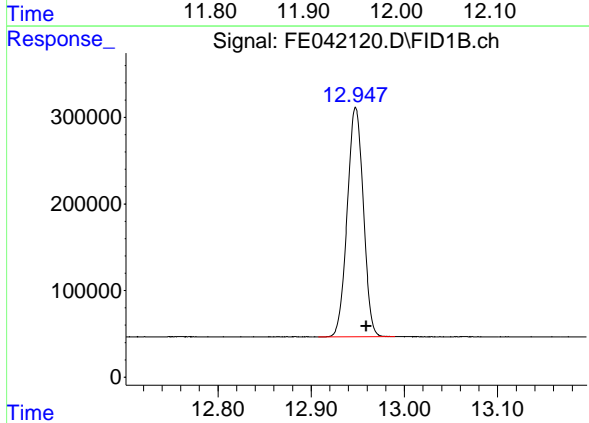
R.T.: 11.639 min
Delta R.T.: -0.010 min
Response: 3285412
Conc: 20.78 ug/ml



#9 ortho-Terphenyl (SURR)

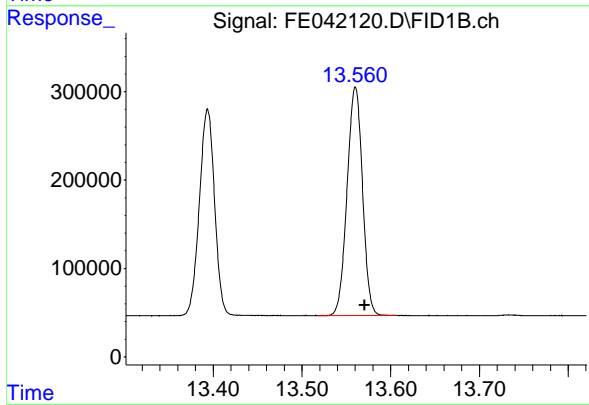
R.T.: 11.959 min
Delta R.T.: -0.010 min
Response: 3714470
Conc: 21.04 ug/ml

Instrument :
FID_E
ClientSampleId :



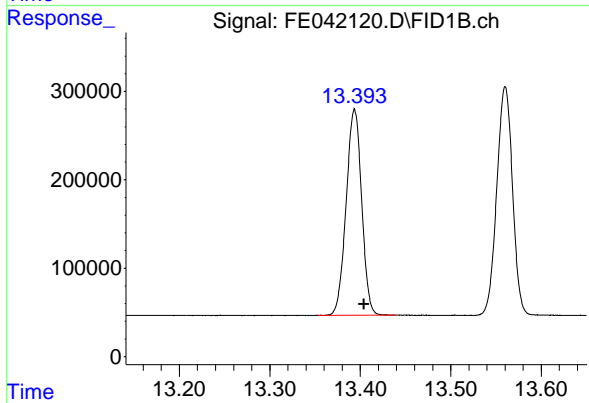
#10 n-Eicosane (C20)

R.T.: 12.948 min
Delta R.T.: -0.011 min
Response: 3176939
Conc: 20.96 ug/ml



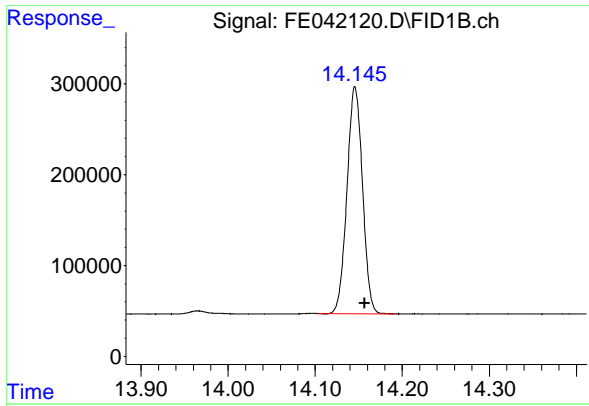
#11 n-Heneicosane (C21)

R.T.: 13.560 min
Delta R.T.: -0.011 min
Response: 3122936
Conc: 21.08 ug/ml



#12 1-chlorooctadecane (SURR)

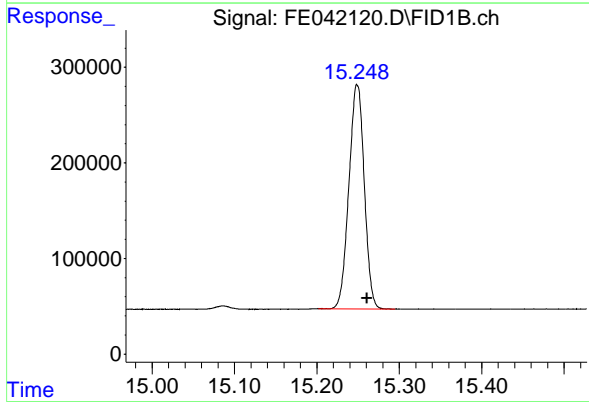
R.T.: 13.394 min
Delta R.T.: -0.010 min
Response: 2773375
Conc: 20.87 ug/ml



#13 n-Docosane (C22)

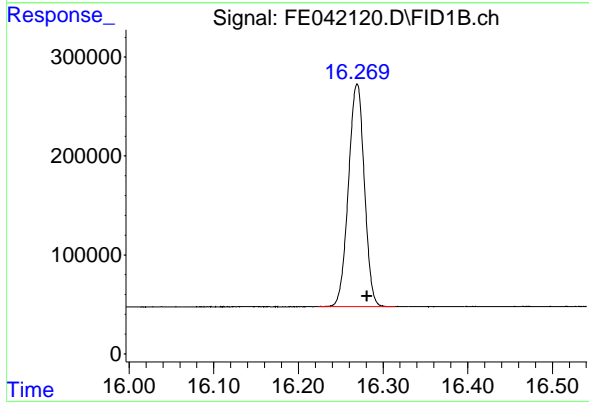
R.T.: 14.146 min
Delta R.T.: -0.011 min
Response: 3093200
Conc: 21.10 ug/ml

Instrument :
FID_E
ClientSampleId :



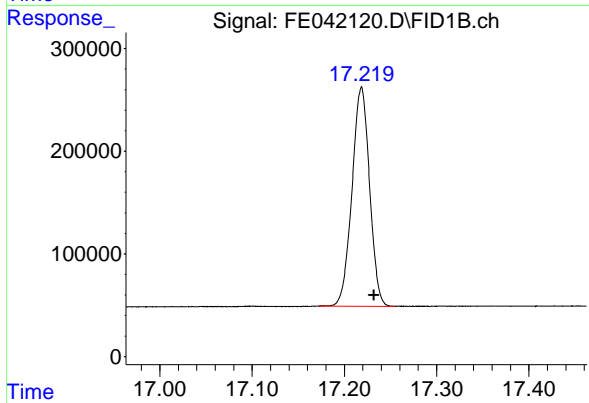
#14 n-Tetracosane (C24)

R.T.: 15.249 min
Delta R.T.: -0.012 min
Response: 3043492
Conc: 21.08 ug/ml



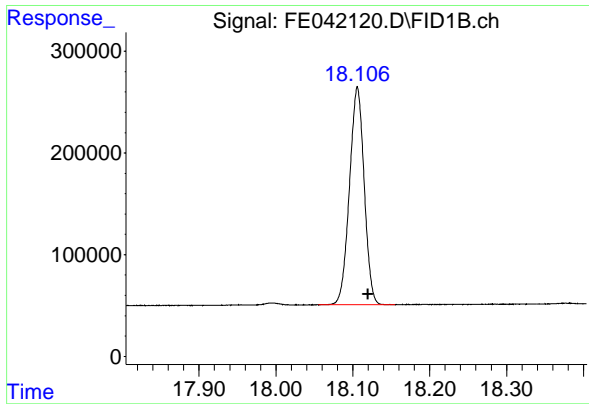
#15 n-Hexacosane (C26)

R.T.: 16.269 min
Delta R.T.: -0.012 min
Response: 2936124
Conc: 21.20 ug/ml



#16 n-Octacosane (C28)

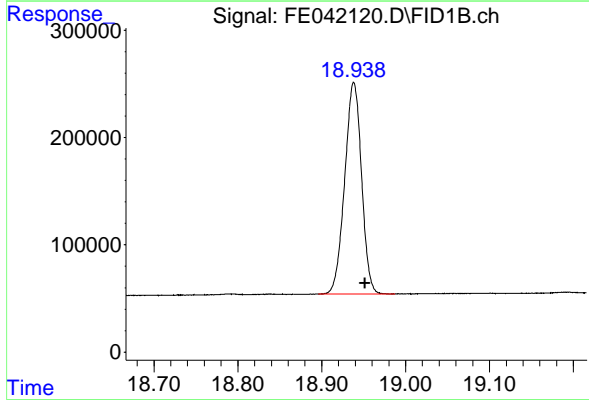
R.T.: 17.219 min
Delta R.T.: -0.014 min
Response: 2821341
Conc: 21.07 ug/ml



#17 n-Tricontane (C30)

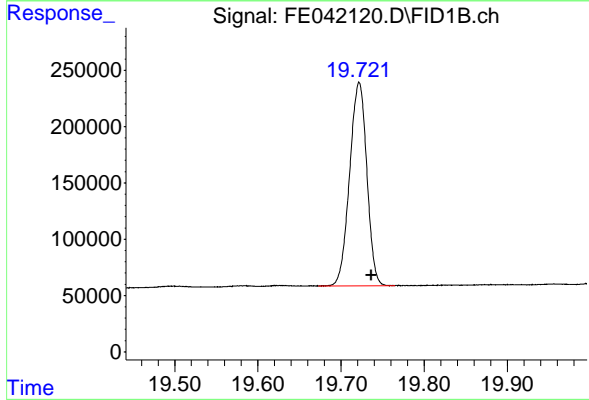
R.T.: 18.106 min
 Delta R.T.: -0.014 min
 Response: 2842738
 Conc: 21.06 ug/ml

Instrument :
 FID_E
 ClientSampleId :



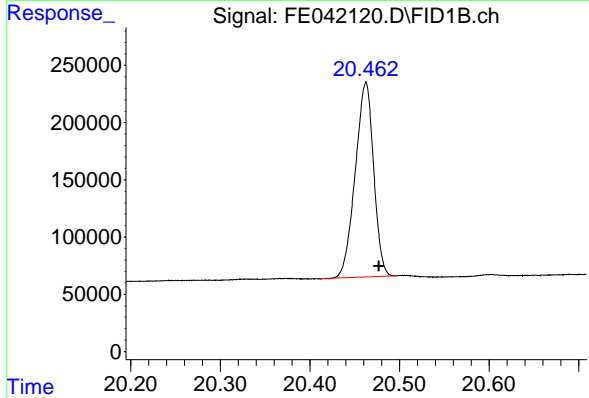
#18 n-Dotriacontane (C32)

R.T.: 18.938 min
 Delta R.T.: -0.014 min
 Response: 2754715
 Conc: 20.62 ug/ml



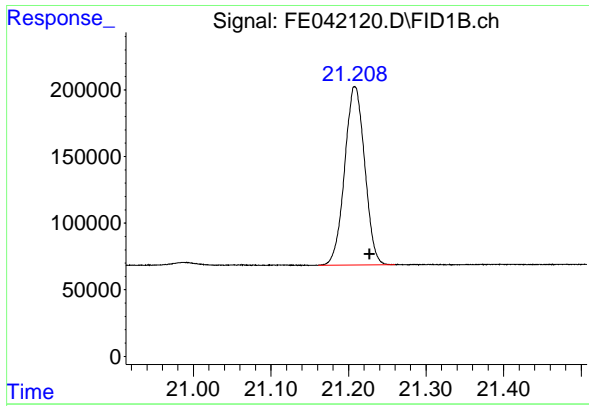
#19 n-Tetracontane (C34)

R.T.: 19.722 min
 Delta R.T.: -0.015 min
 Response: 2593298
 Conc: 19.72 ug/ml



#20 n-Hexatriacontane (C36)

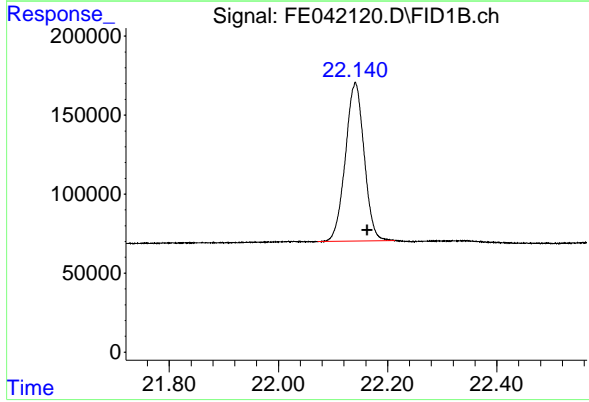
R.T.: 20.463 min
 Delta R.T.: -0.014 min
 Response: 2422447
 Conc: 18.64 ug/ml



#21 n-Octatriacontane (C38)

R.T.: 21.208 min
Delta R.T.: -0.019 min
Response: 2404220
Conc: 17.72 ug/ml

Instrument :
FID_E
ClientSampleId :



#22 n-Tetracontane (C40)

R.T.: 22.141 min
Delta R.T.: -0.022 min
Response: 2388466
Conc: 17.17 ug/ml