

Data Path : Z:\pestpcbsrv\HPCHEM1\FID_E\Data\FE052223AL\
 Data File : FE042130.D
 Signal(s) : FID1B.ch
 Acq On : 23 May 2023 05:58
 Operator : YP\AJ
 Sample : 02870-19
 Misc :
 ALS Vial : 38 Sample Multiplier: 1

Instrument :
 FID_E
ClientSampleId :
 TP20-G

Integration File: autoint1.e
 Quant Time: May 23 08:03:28 2023
 Quant Method : Z:\pestpcbsrv\HPCHEM1\FID_E\methods\Aliphatic EPH 051823.M
 Quant Title : GC Extractables
 QLast Update : Thu May 18 06:27:12 2023
 Response via : Initial Calibration
 Integrator: ChemStation

Volume Inj. : 1 ul
 Signal Phase : Rxi-1ms
 Signal Info : 20M x 0.18mm x 0.18um

Compound	R.T.	Response	Conc Units

System Monitoring Compounds			
9) S ortho-Terphenyl (SURR)	11.957	4042228	22.892 ug/ml
Spiked Amount	50.000	Recovery	= 45.78%
12) S 1-chlorooctadecane (S...	13.393	3125012	23.518 ug/ml
Spiked Amount	50.000	Recovery	= 47.04%

Target Compounds

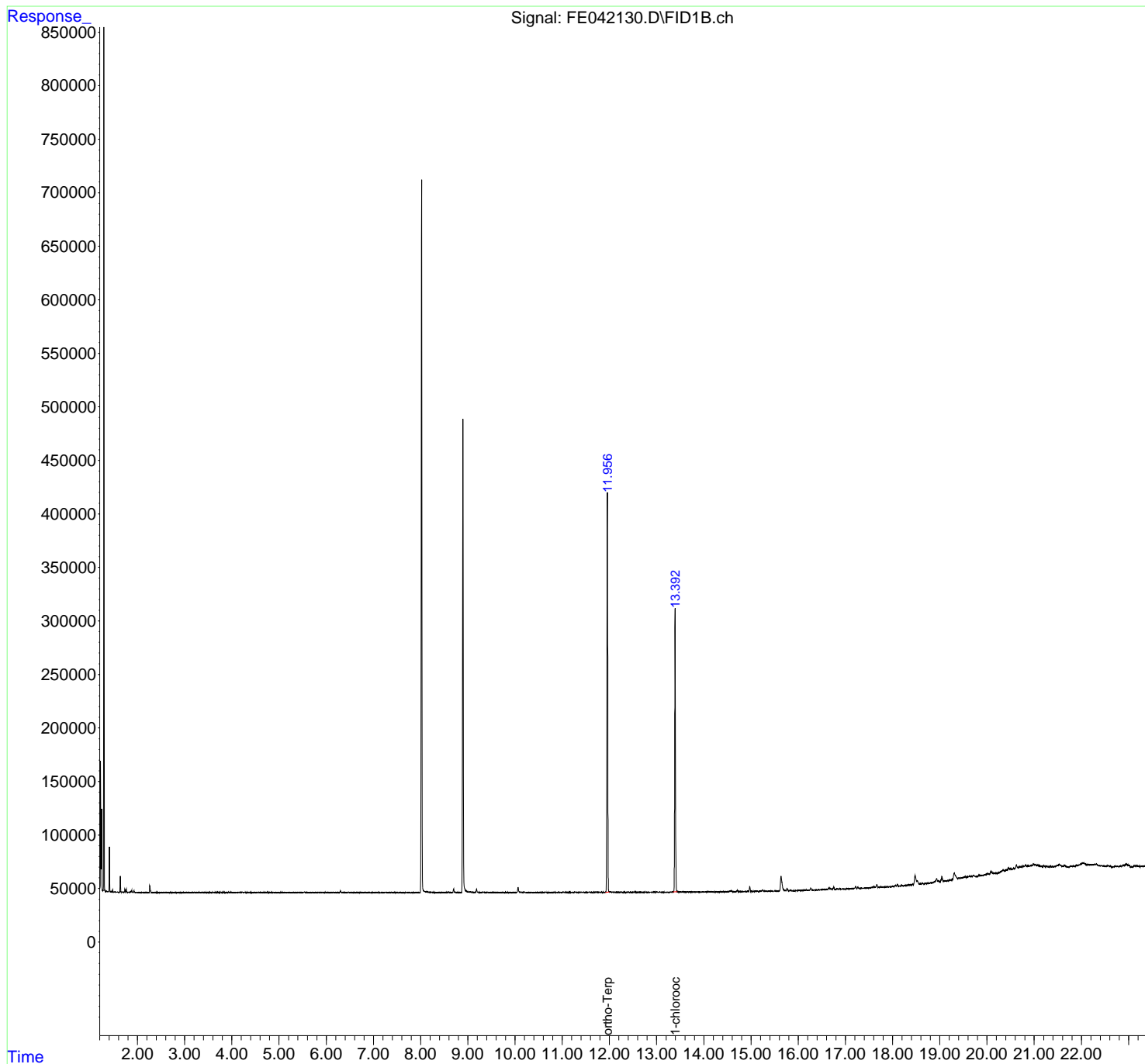
(f)=RT Delta > 1/2 Window (m)=manual int.

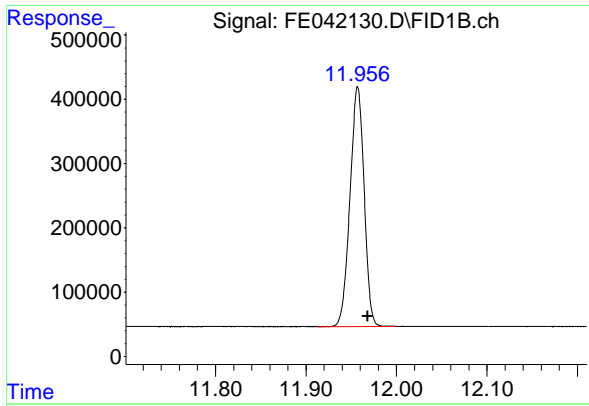
Data Path : Z:\pestpcbsrv\HPCHEM1\FID_E\Data\FE052223AL\
 Data File : FE042130.D
 Signal(s) : FID1B.ch
 Acq On : 23 May 2023 05:58
 Operator : YP\AJ
 Sample : 02870-19
 Misc :
 ALS Vial : 38 Sample Multiplier: 1

Instrument :
 FID_E
 ClientSampleId :
 TP20-G

Integration File: autoint1.e
 Quant Time: May 23 08:03:28 2023
 Quant Method : Z:\pestpcbsrv\HPCHEM1\FID_E\methods\Aliphatic EPH 051823.M
 Quant Title : GC Extractables
 QLast Update : Thu May 18 06:27:12 2023
 Response via : Initial Calibration
 Integrator: ChemStation

Volume Inj. : 1 ul
 Signal Phase : Rxi-1ms
 Signal Info : 20M x 0.18mm x 0.18um

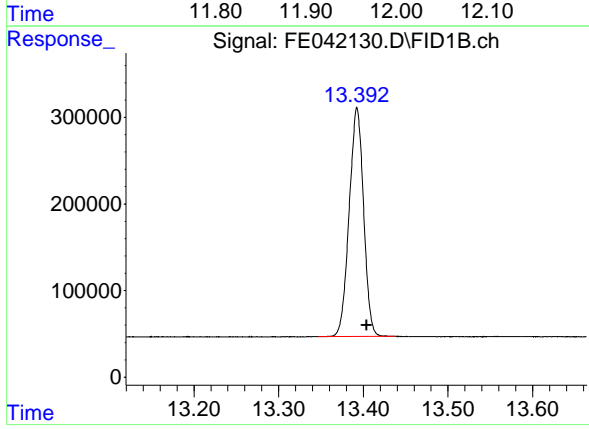




#9 ortho-Terphenyl (SURR)

R.T.: 11.957 min
 Delta R.T.: -0.011 min
 Response: 4042228
 Conc: 22.89 ug/ml

Instrument :
 FID_E
 ClientSampleId :
 TP20-G



#12 1-chlorooctadecane (SURR)

R.T.: 13.393 min
 Delta R.T.: -0.011 min
 Response: 3125012
 Conc: 23.52 ug/ml