

Data Path : Z:\pestpcbsrv\HPCHEM1\FID_E\Data\FE052324AL\
 Data File : FE048368.D
 Signal(s) : FID1B.ch
 Acq On : 24 May 2024 00:32
 Operator : YP\AJ
 Sample : P2578-01
 Misc :
 ALS Vial : 14 Sample Multiplier: 1

Instrument :
 FID_E
 ClientSampleId :
 OR-02-052224

Integration File: autoint1.e
 Quant Time: May 24 01:36:37 2024
 Quant Method : Z:\pestpcbsrv\HPCHEM1\FID_E\methods\Aliphatic EPH 042724.M
 Quant Title : GC Extractables
 QLast Update : Mon Apr 29 03:29:12 2024
 Response via : Initial Calibration
 Integrator: ChemStation

Volume Inj. : 1 ul
 Signal Phase : Rxi-1ms
 Signal Info : 20M x 0.18mm x 0.18um

Compound	R.T.	Response	Conc Units

System Monitoring Compounds			
9) S ortho-Terphenyl (SURR)	11.953	2903987	20.130 ug/ml
Spiked Amount	50.000	Recovery	= 40.26%
12) S 1-chlorooctadecane (S...	13.388	2362824	21.146 ug/ml
Spiked Amount	50.000	Recovery	= 42.29%

Target Compounds

(f)=RT Delta > 1/2 Window

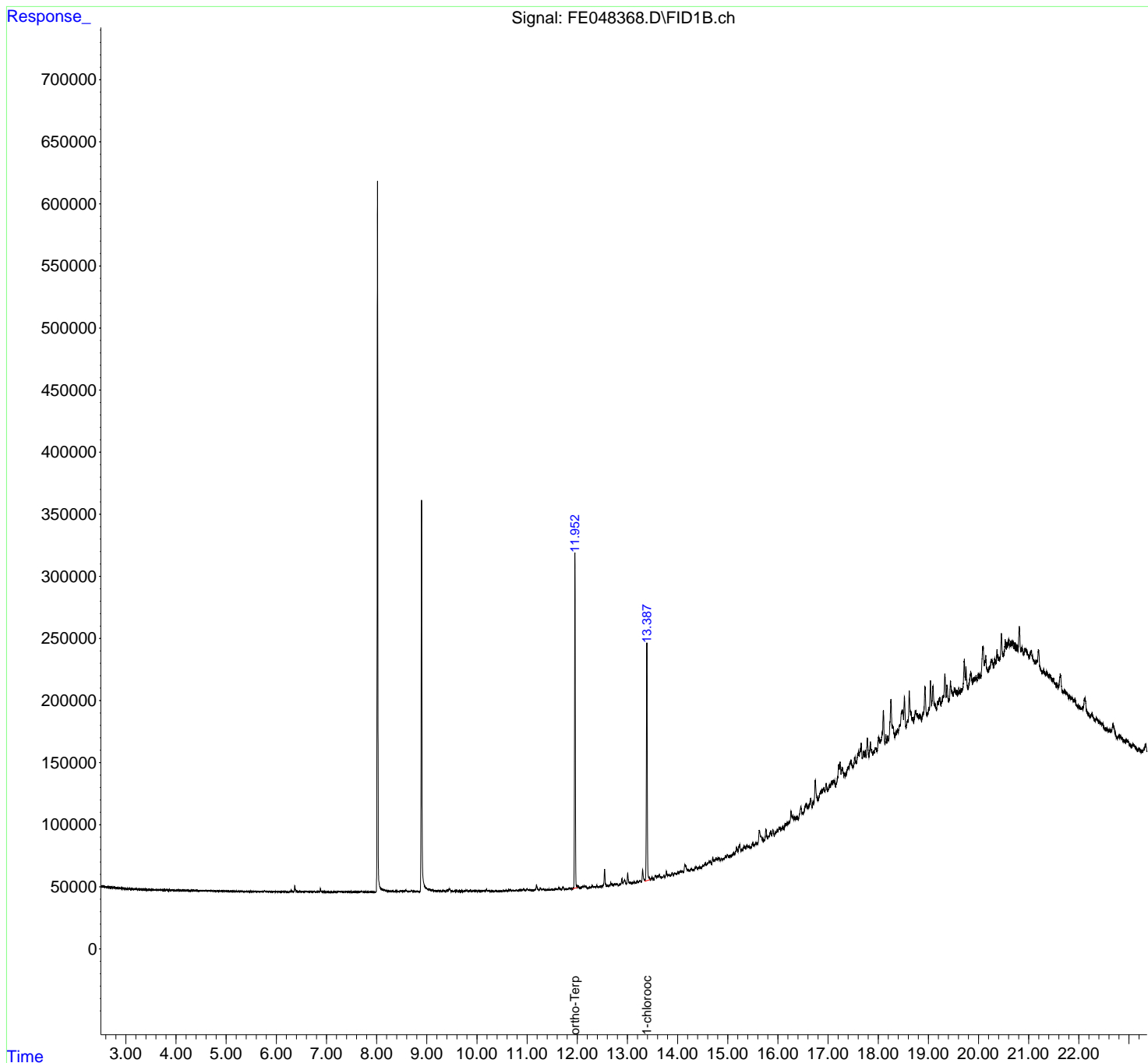
(m)=manual int.

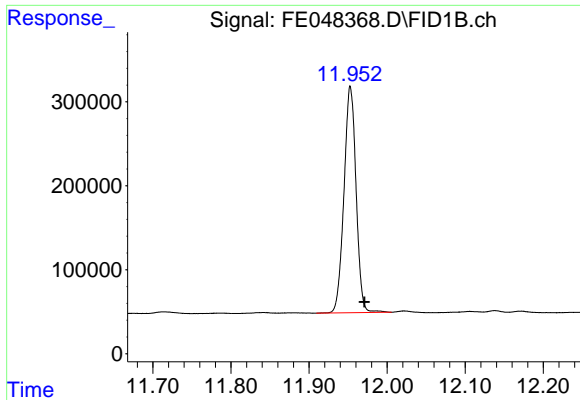
Data Path : Z:\pestpcbsrv\HPCHEM1\FID_E\Data\FE052324AL\
Data File : FE048368.D
Signal(s) : FID1B.ch
Acq On : 24 May 2024 00:32
Operator : YP\AJ
Sample : P2578-01
Misc :
ALS Vial : 14 Sample Multiplier: 1

Instrument :
FID_E
ClientSampleId :
OR-02-052224

Integration File: autoint1.e
Quant Time: May 24 01:36:37 2024
Quant Method : Z:\pestpcbsrv\HPCHEM1\FID_E\methods\Aliphatic EPH 042724.M
Quant Title : GC Extractables
QLast Update : Mon Apr 29 03:29:12 2024
Response via : Initial Calibration
Integrator: ChemStation

Volume Inj. : 1 ul
Signal Phase : Rxi-1ms
Signal Info : 20M x 0.18mm x 0.18um

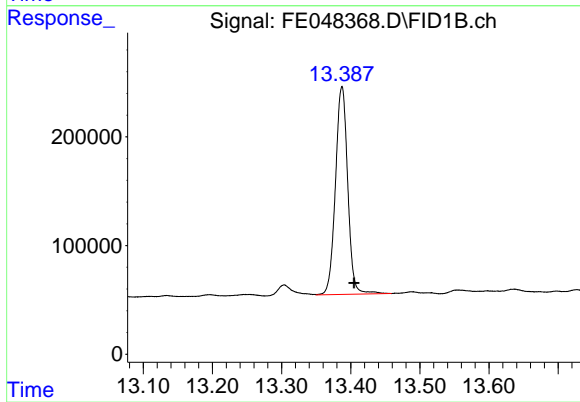




#9 ortho-Terphenyl (SURR)

R.T.: 11.953 min
Delta R.T.: -0.018 min
Response: 2903987
Conc: 20.13 ug/ml

Instrument :
FID_E
ClientSampleId :
OR-02-052224



#12 1-chlorooctadecane (SURR)

R.T.: 13.388 min
Delta R.T.: -0.017 min
Response: 2362824
Conc: 21.15 ug/ml