

Data Path : Z:\pestpcbsrv\HPCHEM1\FID\_E\Data\FE052324AL\  
 Data File : FE048371.D  
 Signal(s) : FID1B.ch  
 Acq On : 24 May 2024 02:03  
 Operator : YP\AJ  
 Sample : P2580-01D  
 Misc :  
 ALS Vial : 17 Sample Multiplier: 1

Instrument :  
 FID\_E  
 ClientSampleId :  
 TR-05-052224

Integration File: autoint1.e  
 Quant Time: May 24 07:32:05 2024  
 Quant Method : Z:\pestpcbsrv\HPCHEM1\FID\_E\methods\Aliphatic EPH 042724.M  
 Quant Title : GC Extractables  
 QLast Update : Mon Apr 29 03:29:12 2024  
 Response via : Initial Calibration  
 Integrator: ChemStation

Volume Inj. : 1 ul  
 Signal Phase : Rxi-1ms  
 Signal Info : 20M x 0.18mm x 0.18um

Compound	R.T.	Response	Conc Units
-----			
System Monitoring Compounds			
9) S ortho-Terphenyl (SURR)	11.957	4578690	31.738 ug/ml
Spiked Amount	50.000	Recovery	= 63.48%
12) S 1-chlorooctadecane (S...	13.392	29594225	264.846 ug/ml
Spiked Amount	50.000	Recovery	= 529.69%

Target Compounds

-----

(f)=RT Delta > 1/2 Window

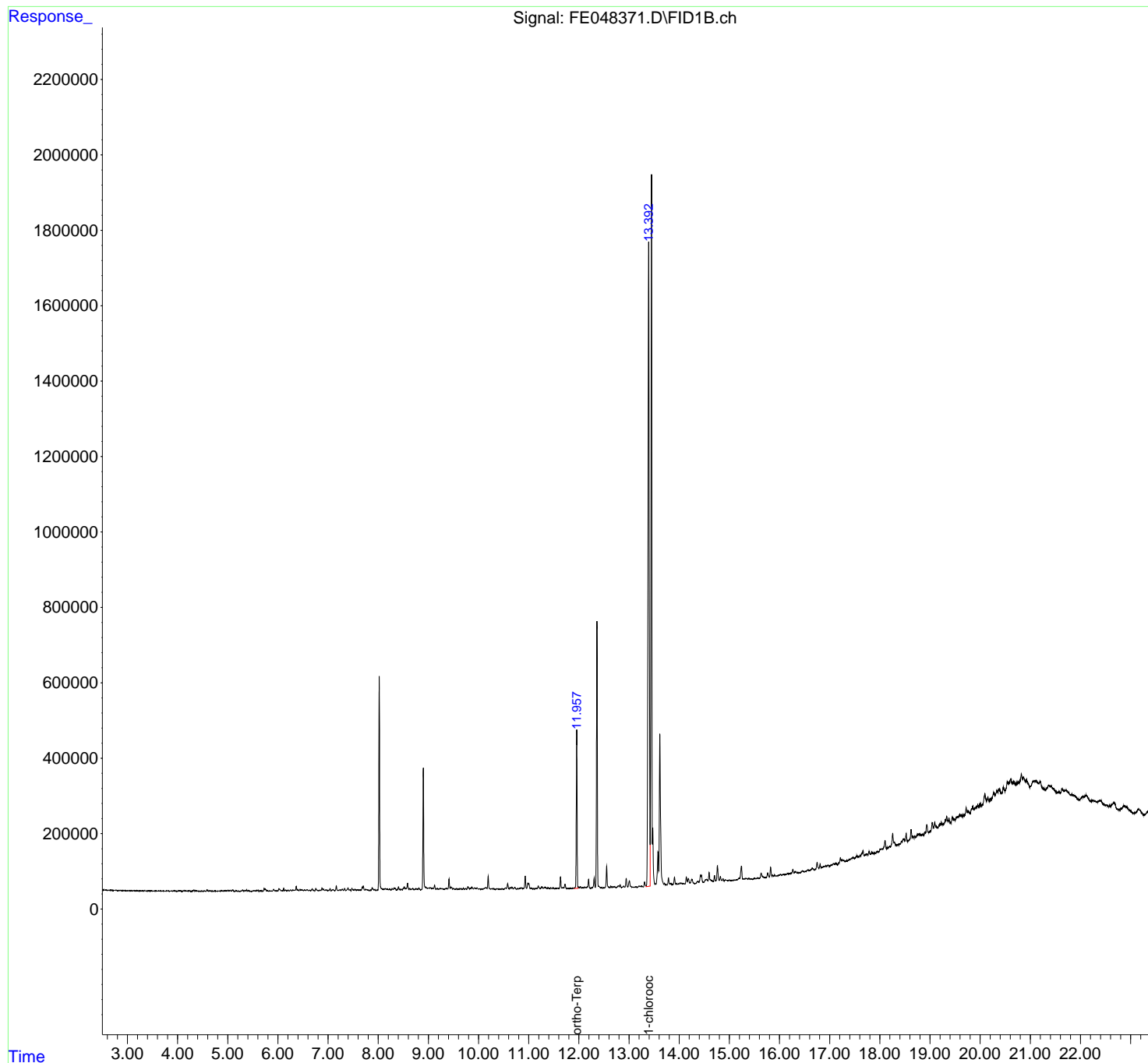
(m)=manual int.

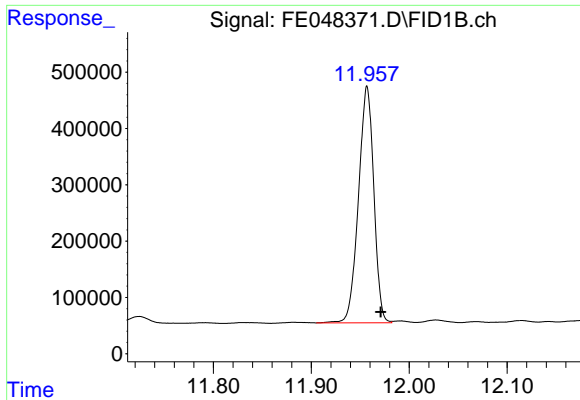
Data Path : Z:\pestpcbsrv\HPCHEM1\FID\_E\Data\FE052324AL\  
Data File : FE048371.D  
Signal(s) : FID1B.ch  
Acq On : 24 May 2024 02:03  
Operator : YP\AJ  
Sample : P2580-01D  
Misc :  
ALS Vial : 17 Sample Multiplier: 1

Instrument :  
FID\_E  
ClientSampleId :  
TR-05-052224

Integration File: autoint1.e  
Quant Time: May 24 07:32:05 2024  
Quant Method : Z:\pestpcbsrv\HPCHEM1\FID\_E\methods\Aliphatic EPH 042724.M  
Quant Title : GC Extractables  
QLast Update : Mon Apr 29 03:29:12 2024  
Response via : Initial Calibration  
Integrator: ChemStation

Volume Inj. : 1 ul  
Signal Phase : Rxi-1ms  
Signal Info : 20M x 0.18mm x 0.18um

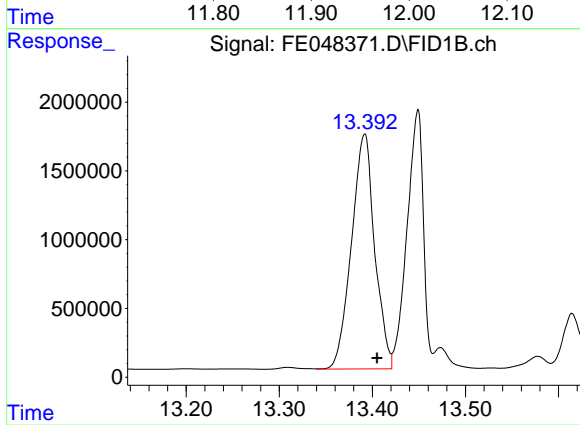




#9 ortho-Terphenyl (SURR)

R.T.: 11.957 min  
Delta R.T.: -0.014 min  
Response: 4578690  
Conc: 31.74 ug/ml

Instrument :  
FID\_E  
ClientSampleId :  
TR-05-052224



#12 1-chlorooctadecane (SURR)

R.T.: 13.392 min  
Delta R.T.: -0.013 min  
Response: 29594225  
Conc: 264.85 ug/ml