

Data Path : Z:\pestpcbsrv\HPCHEM1\FID_E\Data\FE052423AL\
 Data File : FE042193.D
 Signal(s) : FID1B.ch
 Acq On : 24 May 2023 19:37
 Operator : YP\AJ
 Sample : 02869-29
 Misc :
 ALS Vial : 19 Sample Multiplier: 1

Instrument :
 FID_E
 ClientSampleId :

Integration File: autoint1.e
 Quant Time: May 25 06:33:17 2023
 Quant Method : Z:\pestpcbsrv\HPCHEM1\FID_E\methods\Aliphatic EPH 051823.M
 Quant Title : GC Extractables
 QLast Update : Thu May 18 06:27:12 2023
 Response via : Initial Calibration
 Integrator: ChemStation

Volume Inj. : 1 ul
 Signal Phase : Rxi-1ms
 Signal Info : 20M x 0.18mm x 0.18um

Compound	R.T.	Response	Conc Units

System Monitoring Compounds			
9) S ortho-Terphenyl (SURR)	11.966	11864160	67.189 ug/ml
Spiked Amount	50.000	Recovery	= 134.38%
12) S 1-chlorooctadecane (S...	13.400	9379301	70.585 ug/ml
Spiked Amount	50.000	Recovery	= 141.17%

Target Compounds

(f)=RT Delta > 1/2 Window

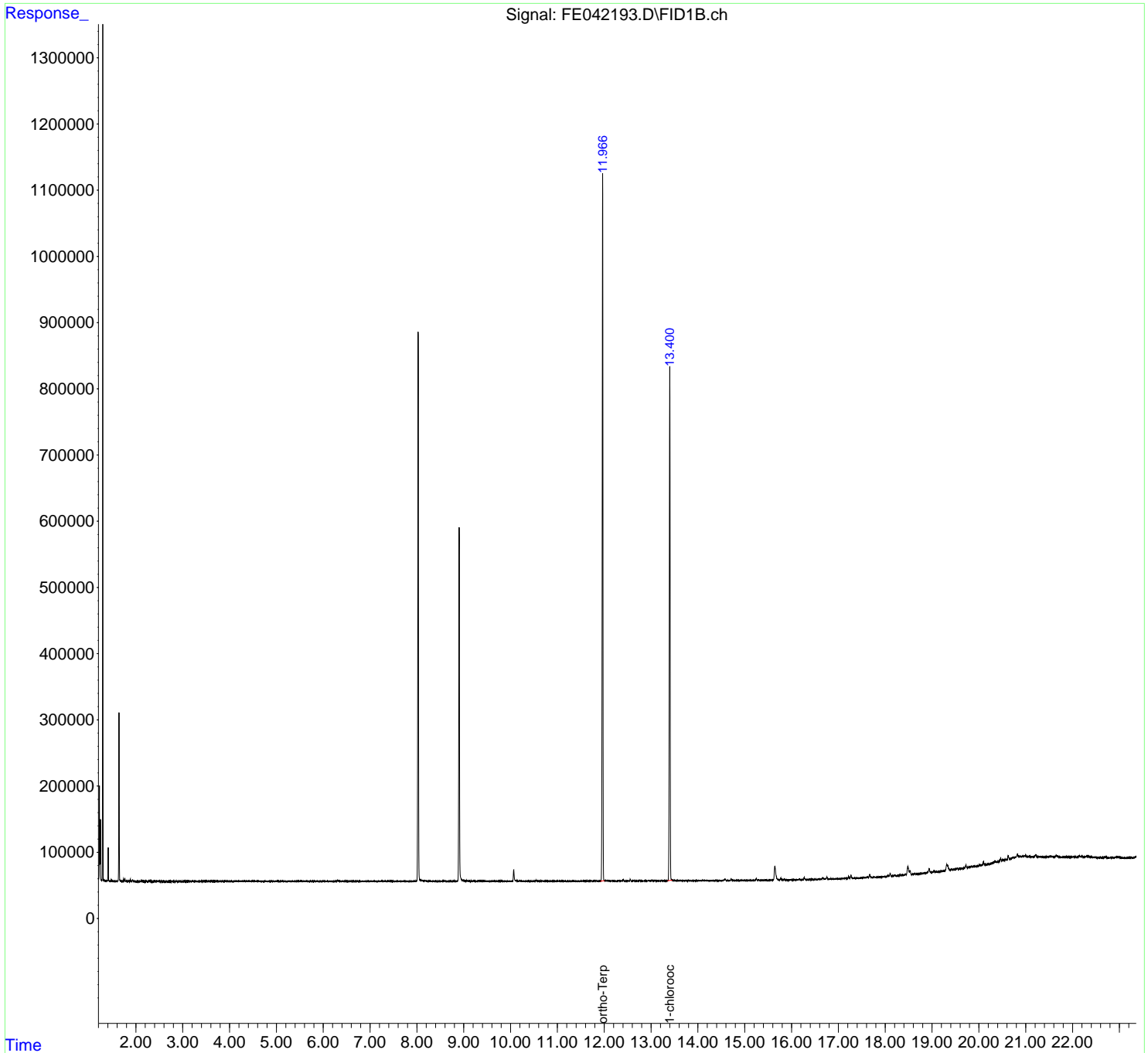
(m)=manual int.

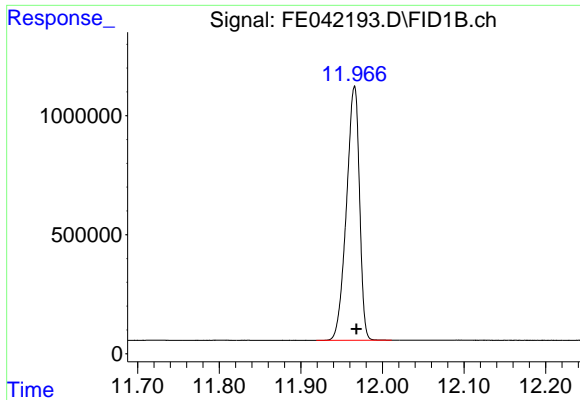
Data Path : Z:\pestpcbsrv\HPCHEM1\FID_E\Data\FE052423AL\
 Data File : FE042193.D
 Signal(s) : FID1B.ch
 Acq On : 24 May 2023 19:37
 Operator : YP\AJ
 Sample : 02869-29
 Misc :
 ALS Vial : 19 Sample Multiplier: 1

Instrument :
 FID_E
 ClientSampleId :

Integration File: autoint1.e
 Quant Time: May 25 06:33:17 2023
 Quant Method : Z:\pestpcbsrv\HPCHEM1\FID_E\methods\Aliphatic EPH 051823.M
 Quant Title : GC Extractables
 QLast Update : Thu May 18 06:27:12 2023
 Response via : Initial Calibration
 Integrator: ChemStation

Volume Inj. : 1 ul
 Signal Phase : Rxi-1ms
 Signal Info : 20M x 0.18mm x 0.18um

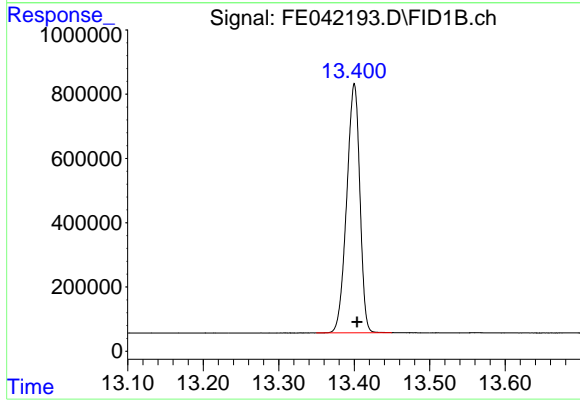




#9 ortho-Terphenyl (SURR)

R.T.: 11.966 min
 Delta R.T.: -0.002 min
 Response: 11864160
 Conc: 67.19 ug/ml

Instrument :
 FID_E
 ClientSampleId :



#12 1-chlorooctadecane (SURR)

R.T.: 13.400 min
 Delta R.T.: -0.004 min
 Response: 9379301
 Conc: 70.59 ug/ml