

Data Path : Z:\pestpcbsrv\HPCHEM1\FID_E\Data\FE053023AL\
 Data File : FE042268.D
 Signal(s) : FID1B.ch
 Acq On : 30 May 2023 08:26
 Operator : YP\AJ
 Sample : I.BLK
 Misc :
 ALS Vial : 1 Sample Multiplier: 1

Instrument :
 FID_E
 ClientSampleId :

Integration File: autoint1.e
 Quant Time: May 30 12:21:47 2023
 Quant Method : Z:\pestpcbsrv\HPCHEM1\FID_E\methods\Aliphatic EPH 051823.M
 Quant Title : GC Extractables
 QLast Update : Thu May 18 06:27:12 2023
 Response via : Initial Calibration
 Integrator: ChemStation

Volume Inj. : 1 ul
 Signal Phase : Rxi-1ms
 Signal Info : 20M x 0.18mm x 0.18um

Compound	R.T.	Response	Conc Units

System Monitoring Compounds			
Target Compounds			
20) T n-Hexatriacontane (C36)	20.499	498580	3.836 ug/ml

(f)=RT Delta > 1/2 Window

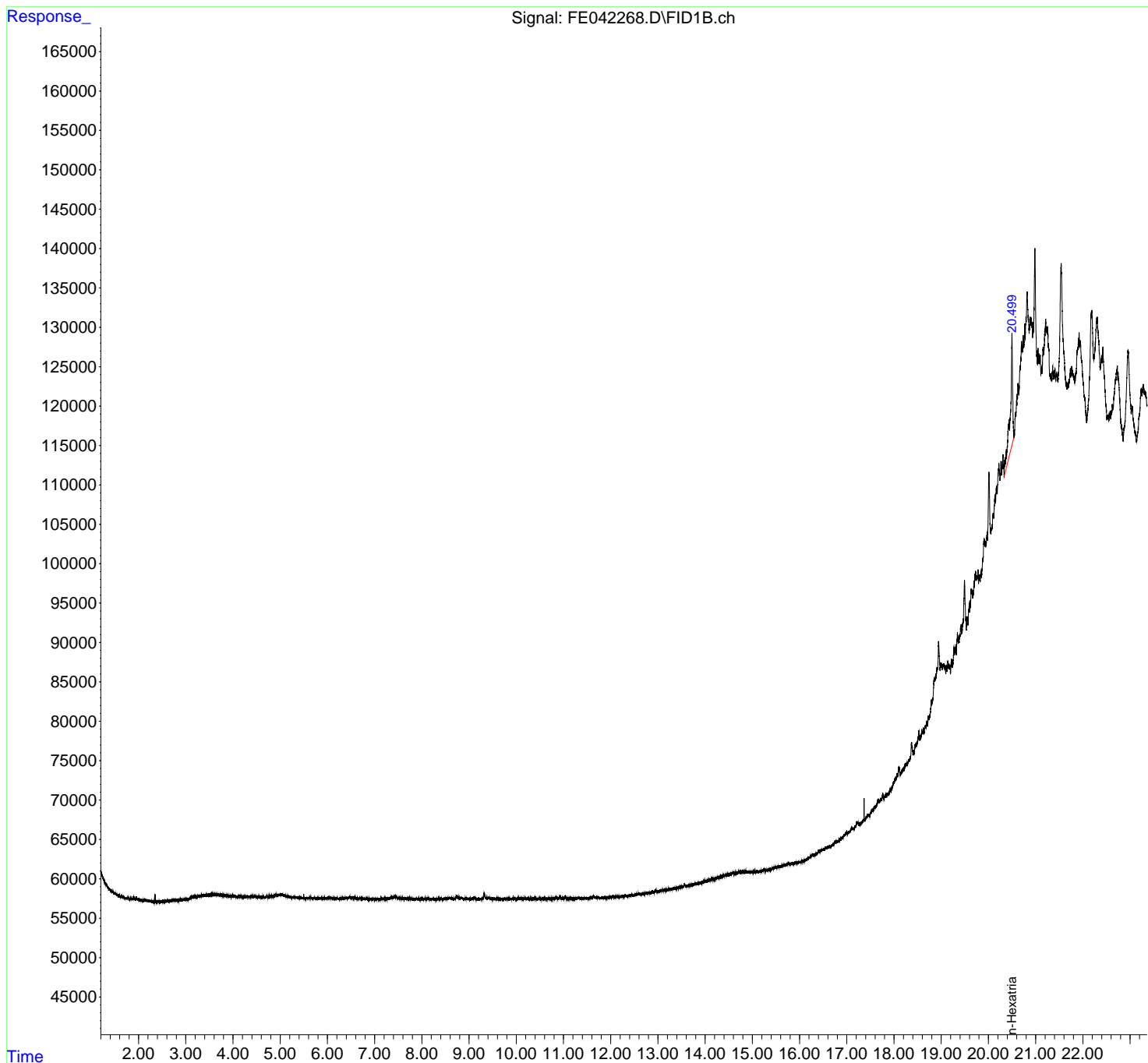
(m)=manual int.

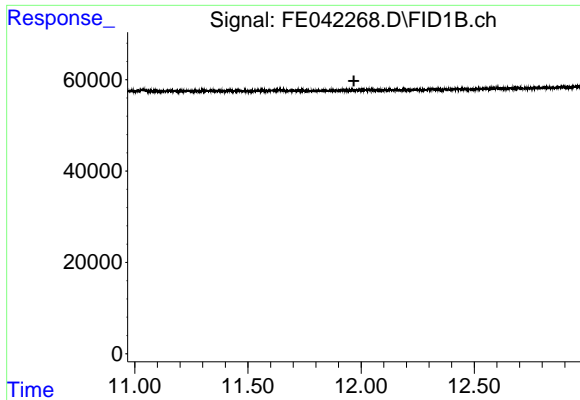
Data Path : Z:\pestpcbsrv\HPCHEM1\FID_E\Data\FE053023AL\
 Data File : FE042268.D
 Signal(s) : FID1B.ch
 Acq On : 30 May 2023 08:26
 Operator : YP\AJ
 Sample : I.BLK
 Misc :
 ALS Vial : 1 Sample Multiplier: 1

Instrument :
 FID_E
 ClientSampleId :

Integration File: autoint1.e
 Quant Time: May 30 12:21:47 2023
 Quant Method : Z:\pestpcbsrv\HPCHEM1\FID_E\methods\Aliphatic EPH 051823.M
 Quant Title : GC Extractables
 QLast Update : Thu May 18 06:27:12 2023
 Response via : Initial Calibration
 Integrator: ChemStation

Volume Inj. : 1 ul
 Signal Phase : Rxi-1ms
 Signal Info : 20M x 0.18mm x 0.18um

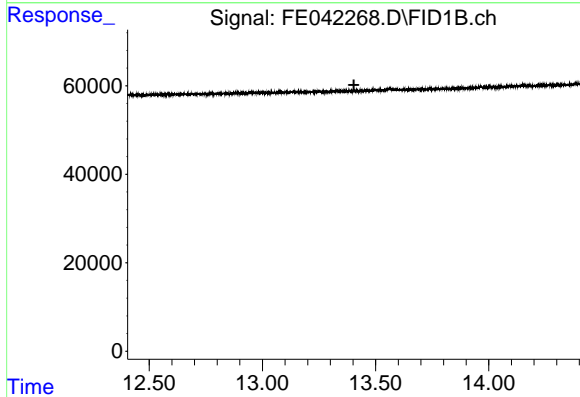




#9 ortho-Terphenyl (SURR)

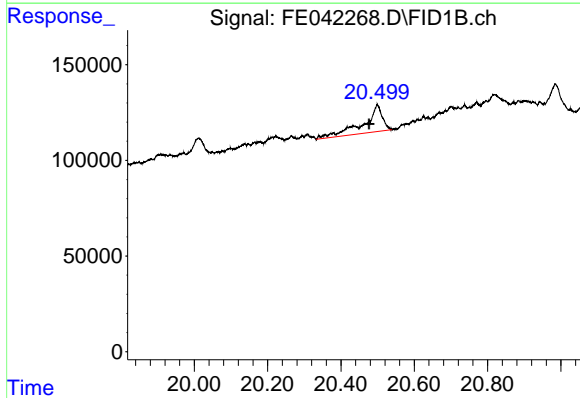
R.T.: 0.000 min
 Exp R.T.: 11.968 min
 Response: 0
 Conc: N.D.

Instrument : FID_E
 ClientSampleId :



#12 1-chlorooctadecane (SURR)

R.T.: 0.000 min
 Exp R.T.: 13.404 min
 Response: 0
 Conc: N.D.



#20 n-Hexatriacontane (C36)

R.T.: 20.499 min
 Delta R.T.: 0.022 min
 Response: 498580
 Conc: 3.84 ug/ml