

Data Path : Z:\pestpcbsrv\HPCHEM1\FID_E\Data\FE053025AL\
 Data File : FE054104.D
 Signal(s) : FID1B.ch
 Acq On : 30 May 2025 18:03
 Operator : YP\AJ
 Sample : Q2151-02
 Misc :
 ALS Vial : 18 Sample Multiplier: 1

Instrument :
 FID_E
ClientSampleId :
 WC-1-EPH

Integration File: autoint1.e
 Quant Time: May 30 22:57:29 2025
 Quant Method : Z:\pestpcbsrv\HPCHEM1\FID_E\methods\Aliphatic EPH 051425.M
 Quant Title : GC Extractables
 QLast Update : Wed May 14 12:15:41 2025
 Response via : Initial Calibration
 Integrator: ChemStation

Volume Inj. : 1 ul
 Signal Phase : Rxi-1ms
 Signal Info : 20M x 0.18mm x 0.18um

Compound	R.T.	Response	Conc Units

System Monitoring Compounds			
9) S ortho-Terphenyl (SURR)	11.841	8826487	54.313 ug/ml
Spiked Amount	50.000	Recovery	= 108.63%
12) S 1-chlorooctadecane (S...	13.286	7062665	59.576 ug/ml
Spiked Amount	50.000	Recovery	= 119.15%

Target Compounds

(f)=RT Delta > 1/2 Window

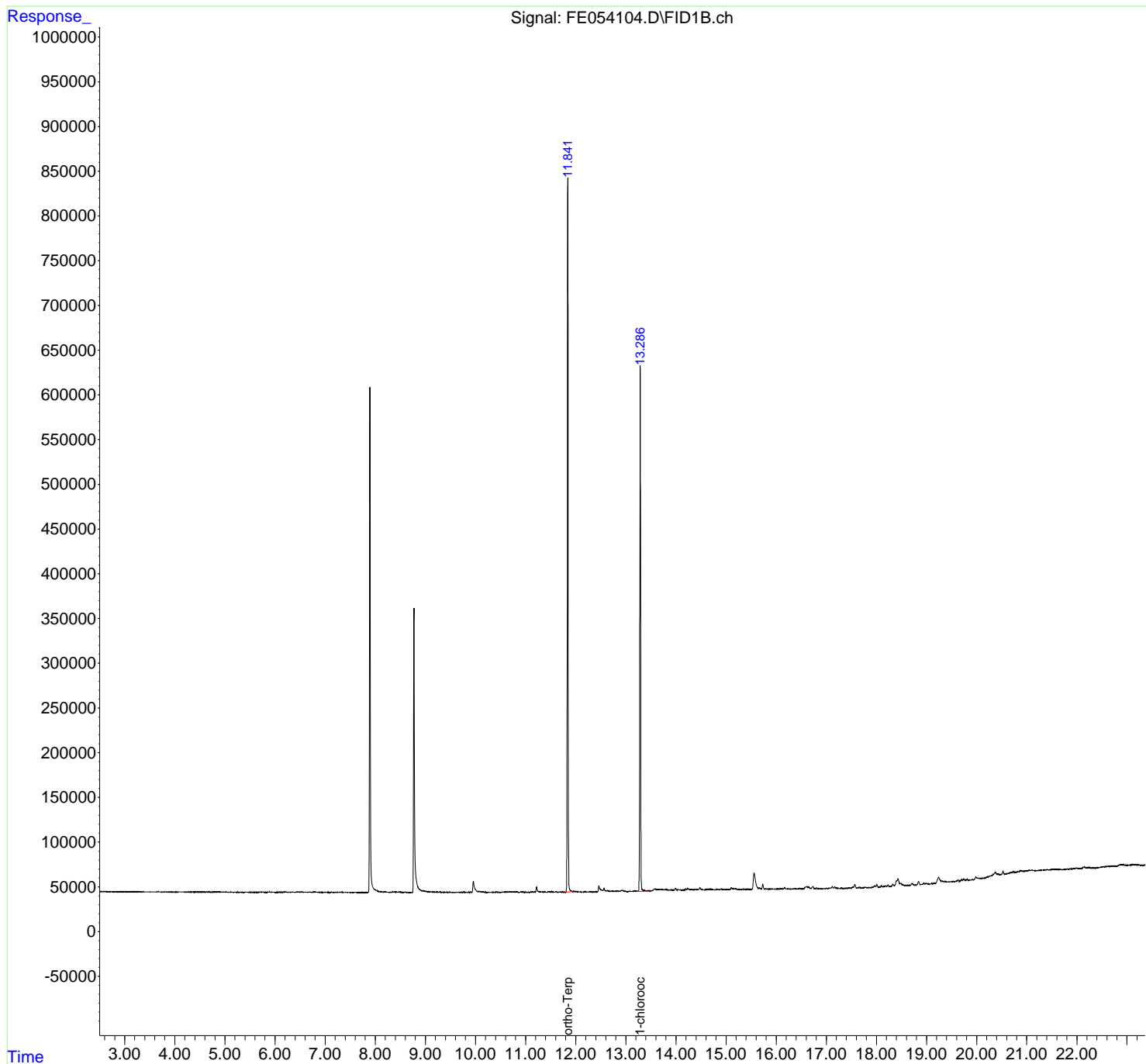
(m)=manual int.

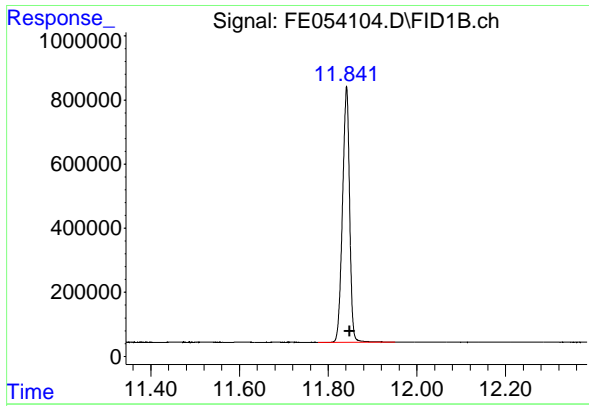
Data Path : Z:\pestpcbsrv\HPCHEM1\FID_E\Data\FE053025AL\
 Data File : FE054104.D
 Signal(s) : FID1B.ch
 Acq On : 30 May 2025 18:03
 Operator : YP\AJ
 Sample : Q2151-02
 Misc :
 ALS Vial : 18 Sample Multiplier: 1

Instrument :
 FID_E
 ClientSampleId :
 WC-1-EPH

Integration File: autoint1.e
 Quant Time: May 30 22:57:29 2025
 Quant Method : Z:\pestpcbsrv\HPCHEM1\FID_E\methods\Aliphatic EPH 051425.M
 Quant Title : GC Extractables
 QLast Update : Wed May 14 12:15:41 2025
 Response via : Initial Calibration
 Integrator: ChemStation

Volume Inj. : 1 ul
 Signal Phase : Rxi-1ms
 Signal Info : 20M x 0.18mm x 0.18um

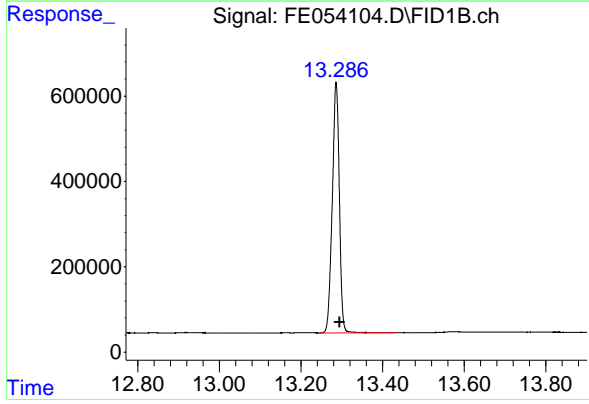




#9 ortho-Terphenyl (SURR)

R.T.: 11.841 min
Delta R.T.: -0.007 min
Response: 8826487
Conc: 54.31 ug/ml

Instrument :
FID_E
ClientSampleId :
WC-1-EPH



#12 1-chlorooctadecane (SURR)

R.T.: 13.286 min
Delta R.T.: -0.008 min
Response: 7062665
Conc: 59.58 ug/ml